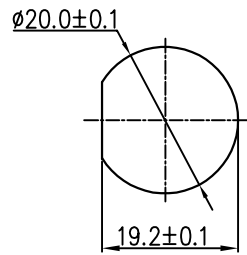
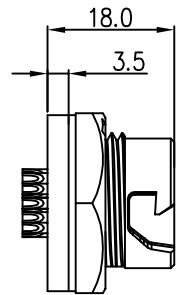


THIS INFORMATION IS CONFIDENTIAL AND IS DISCLOSED TO YOU ON CONDITION THAT NO FURTHER DISCLOSURE IS MADE BY YOU TO OTHER THAN CHOGORI PERSONNEL WITHOUT AUTHORIZATION FROM CHOGORI CORP.

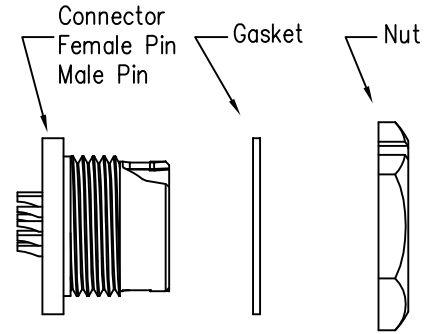
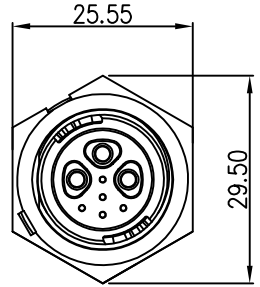
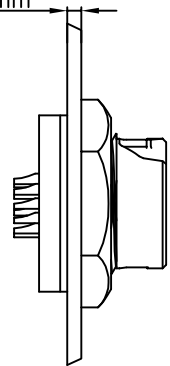
REV.	ECN NO.	DESCRIPTION	SIGN	DATE
C1	N/A	INITIAL DRAWING	Liu	2020/05/17



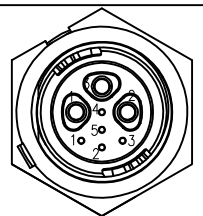
Recommended Panel Cut-Out



Panel T: Max 2.5mm



23XXX635-01  
Pin Number



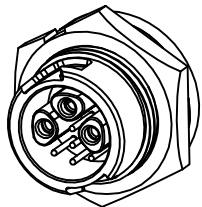
3F+5M

P/N: 23305635-01

Pin Assignments  
Front View

**Specification:**

1. Operation Temperature:  $-45^{\circ}\text{C} \sim 105^{\circ}\text{C}$ .
2. Insulation Resistance:  $100\text{M}\Omega$  at DC500V.
3. Contact Resistance:  $<10\text{m}\Omega$ .
4. Withstand Voltage: 1000V AC
5. Operating Current: 15A+2A
6. Operating Voltage: DC 125V+30V
7. Waterproof Rate: IP67 (Mated)
8. Housing: Nylon, Black
9. Female Pin: Copper Alloy, Gold Plated
10. Male Pin: Copper Alloy, Gold Plated
11. Gasket: Silicon Gray
12. Panel Nut: Nylon, Blue
13. Torque Rate:  $0.8 \sim 1.0\text{N} \cdot \text{m}$
14. RoHS Compliant.
15. Mating Cap P/N: 806-00047-00



**CHOGORI**

UNIT:mm		DESCRIPTION	Middle Series 3F+5M Push Lock Front Mount	PART NO	23305635-01	DRAWN BY	Liu	DATE	2020/05/17
TOLERANCE		SCALE	1:1	SHEET	1 OF 1	CHECKED BY	Mo	DATE	2020/05/17
.X	$\pm 0.25$	REV.	C1	SIZE	A4	APPROVED BY	Adley	DATE	2020/05/17
.XX	$\pm 0.15$								
.XXX	$\pm 0.05$								
ANGLES	$\pm 1^{\circ}$								