

ITEM	PART#	DESCRIPTION	QTY	UOM
A	701070004	SL WtW Conn SR WO/MtgE Opt A 5Ckt	1	PC
B	16020107	SL Male Crp Term 22-24awg Tin Reel	5	PC
C	--	PAPER PRINTED PAPER WHITE	1	PC

FROM	TO	DESCRIPTION	COLOR
A1	--	1X22AWG DISC MPPE BK UL11028	BLACK
A2	--	1X22AWG DISC MPPE BK UL11028	BLACK
A3	--	1X22AWG DISC MPPE BK UL11028	BLACK
A4	--	1X22AWG DISC MPPE BK UL11028	BLACK
A5	--	1X22AWG DISC MPPE BK UL11028	BLACK

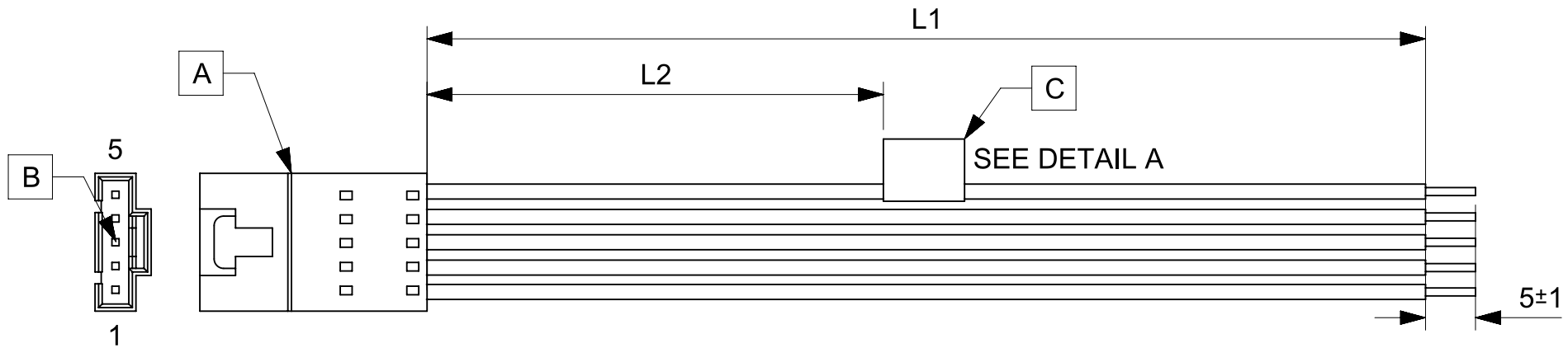


TABLE			
PART NUMBER	L1	L2	TITLE
2162731050	50±3	13 REF	SL POSITIVE LOCK P-S 5CKT 50MM Sn
2162731051	100±5	38 REF	SL POSITIVE LOCK P-S 5CKT 100MM Sn
2162731052	150±8	63 REF	SL POSITIVE LOCK P-S 5CKT 150MM Sn
2162731053	300±10	138 REF	SL POSITIVE LOCK P-S 5CKT 300MM Sn
2162731054	600±10	288 REF	SL POSITIVE LOCK P-S 5CKT 600MM Sn

- NOTES**
1. Connector view shown is from mating side.
  2. Free ends must be stripped, twisted & tinned. The length of tinning is 5±1mm. Tinning dia must be 0.9mm Max.
  3. Label text must be 2mm max. in height with Arial font.
  4. Label must be wrapped in Flag type on a single cable.

MOLEX P/N  
MOLEX  
BATCH WK/YR  
DETAIL A

REVISION			
DATE	REV	DESCRIPTION	CHANGER
2020/05/05	A	INITIAL RELEASE	ARAJU

FUNCTIONAL SYMBOLS FA = 0 FE = 0 FP = 0	THIS DRAWING CONTAINS INFORMATION THAT IS PROPRIETARY TO MOLEX ELECTRONIC TECHNOLOGIES, LLC AND SHOULD NOT BE USED WITHOUT WRITTEN PERMISSION		
	DIMENSION UNITS	SCALE	CURRENT REV DESC:
	mm	NTS	EC NO: 642836
	GENERAL TOLERANCES (UNLESS SPECIFIED)		DRWN: ARAJU 2020/05/05
DIVISIONAL SYMBOLS	ANGULAR TOL	± °	CHK'D: RDESAI01 2020/08/05
	4 PLACES	±	APPR: RDESAI01 2020/08/05
	3 PLACES	±	INITIAL REVISION:
	2 PLACES	±	DRWN: ARAJU 2020/05/05
	1 PLACE	±	APPR: RDESAI01 2020/08/05
0 PLACES	±		
DRAFT WHERE APPLICABLE MUST REMAIN WITHIN DIMENSIONS		THIRD ANGLE PROJECTION	DRAWING
			SERIES
			MATERIAL NUMBER
			CUSTOMER
			SHEET NUMBER

**molex**

SEE TABLE

PRODUCT CUSTOMER DRAWING

DOCUMENT NUMBER	DOC TYPE	DOC PART	REVISION
2162731050	PSD	000	A