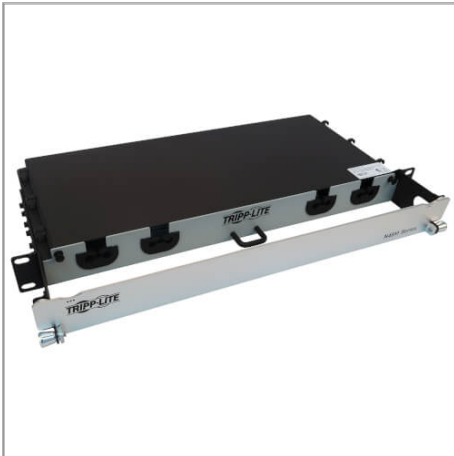


Preloaded Fiber Panel, 1U - 2x (24F MTP/MPO-PC to 12x LC Duplex F/M) 24F Trunk Cables, OM4 Multimode, 10 m (32.8 ft.)

MODEL NUMBER: N48M-2M24L12-10



1U panel comes preloaded with spools of multimode fiber cable that allow you to extend the exact length required and store the excess out of sight.

Description

Preloaded Fiber Panel, 1U - 2x (24F MTP/MPO-PC to 12x LC Duplex F/M) 24F Trunk Cables, OM4 Multimode, 10 m (32.8 ft.)

Features

1U Panel Solution Comes with Cabling Preloaded to Cut Costs and Save Time

All necessary cabling is included with this preloaded fiber panel, coiled inside and ready for immediate use. The aluminum 1U chassis features two 24-fiber MTP/MPO-PC to LC Duplex multimode trunk cables, both 10 meters (32.8 feet) in length to make management easy. The panel opens to provide easy access to stored cables. Use only as much cabling as you need. The remainder stores inside the chassis to eliminate cable clutter, allow better airflow through the rack and make equipment maintenance and replacement easier. The cables and panels have labels to help with organization. You also avoid the expense and effort of custom cabling. The flexibility in cable length lets you reuse the cables if equipment is moved. The N48M-2M24L12-10 mounts in just 1U of space in an EIA-standard 19-inch rack.

Specifications

OVERVIEW	
UPC Code	037332262202
Product Type	Preloaded
Technology	Multimode
Optical Mode	OM4
Panel Dimensions	17.32" X 1.73" X 10.20"
Panel Cable Number	2

Highlights

- Dual MTP/MPO-to-LC 24-fiber OM4 multimode cables come coiled inside for instant use
- Use only as much cable as you need; store the remainder inside to avoid clutter
- Flexible cable length allows reuse of cables if equipment is moved
- Aluminum chassis mounts into 1U of space in EIA-standard 19 in. racks

Applications

- Save the expense and effort of buying custom cables or repurchasing cables after moving rack equipment
- Eliminate cable clutter by using only as much as you need and storing excess cable inside the panel

Package Includes

- N48M-2M24L12-10 Preloaded Fiber Panel
- (2) MTP/MPO-PC to LC Duplex trunk cables, 10 m (32.8 ft.)
- Installation guide

Panel Cable Length (m)	10
Mode Type	Multimode
Firmware / Software Docs	
Offset Ports	No
PHYSICAL	
Primary Form Factor	Rackmount
Rack Height	1U
Cable Jacket Color	Aqua
Connector Color	Aqua; Black; White
Cable Jacket Rating	OFNP
Cable Outer Diameter (OD)	2.9 mm
Clad Diameter (microns)	125
Core Diameter (microns)	50
Primary Coating Diameter (microns)	245
Number of Fibers	24
Cable Length (ft.)	32.8
Cable Length (m)	10.00
Cable Length (in.)	393.7
Minimum Bend Radius	20 mm (Dynamic); 10 mm (Static)
Shipping Dimensions (hwd / in.)	4.30 x 22.80 x 18.90
Shipping Weight (lbs.)	7.28
Shipping Weight (kg)	3.30
Fiber Cable Length	10M (32.8 ft)
ENVIRONMENTAL	
Operating Temperature Range	-4° to 140°F (-20° to 60°C)
Storage Temperature Range	-4° to 140°F (-20° to 60°C)
Operating Humidity Range	5% to 85% RH, Non-Condensing
Storage Humidity Range	5% to 85% RH, Non-Condensing
COMMUNICATIONS	
Network Compatibility	100 Gbps; 400 Gbps
Wavelength	1300nm; 850nm
Attenuation @ 850NM	3.0 dB / km
Attenuation @ 1300NM	1.0 dB / km

Insertion Loss	MTP/MPO: 0.35 dB; LC: 0.20 dB
CONNECTIONS	
Side A - Connector 1	MTP/MPO (FEMALE)
Side B - Connector 1	(12) LC DUPLEX (MALE)
Endface Polish	PC
FEATURES & SPECIFICATIONS	
All-in-One Kit	Yes
Push/Pull Tabs	Yes
Built-in Cables	Yes
Optical Port	LC; MPO/MTP
STANDARDS & COMPLIANCE	
Product Compliance	RoHS; REACH
WARRANTY & SUPPORT	
Product Warranty Period (Worldwide)	Lifetime limited warranty