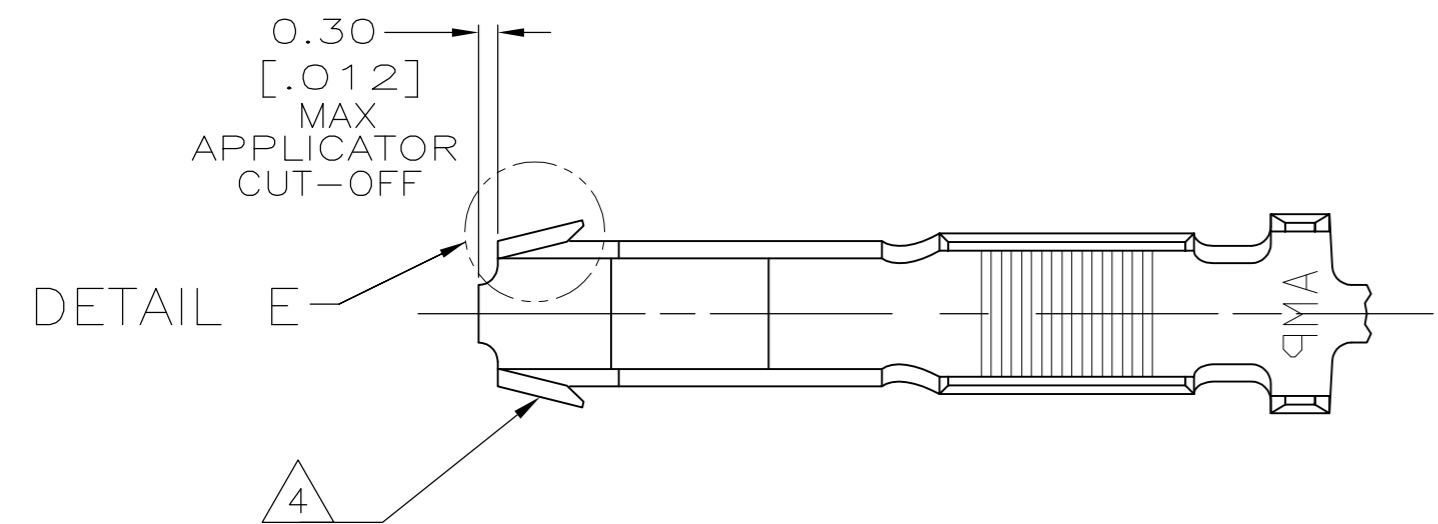


THIS DRAWING IS UNPUBLISHED. RELEASED FOR PUBLICATION  
 © COPYRIGHT - By - ALL RIGHTS RESERVED.

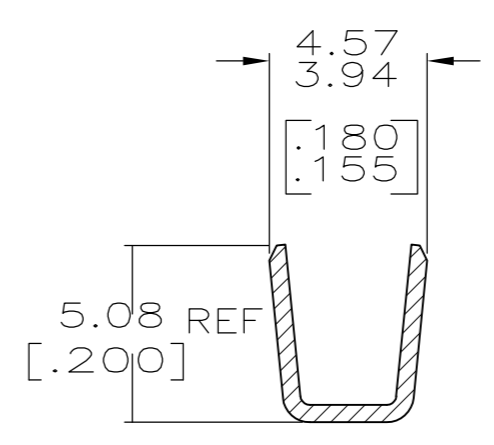
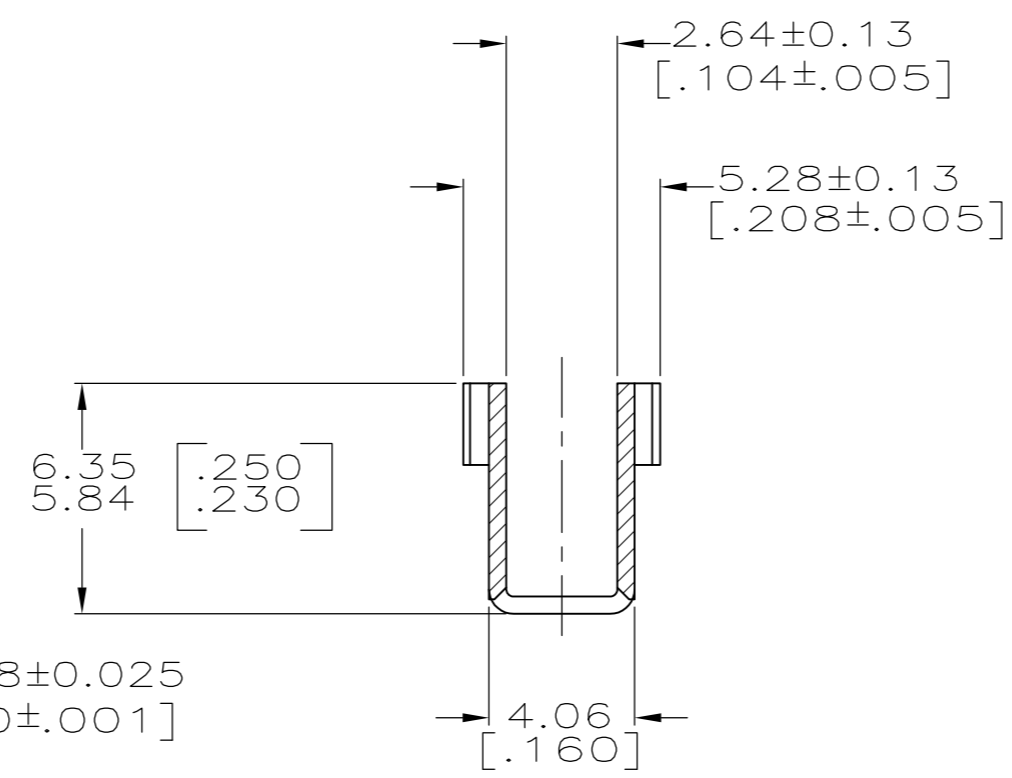
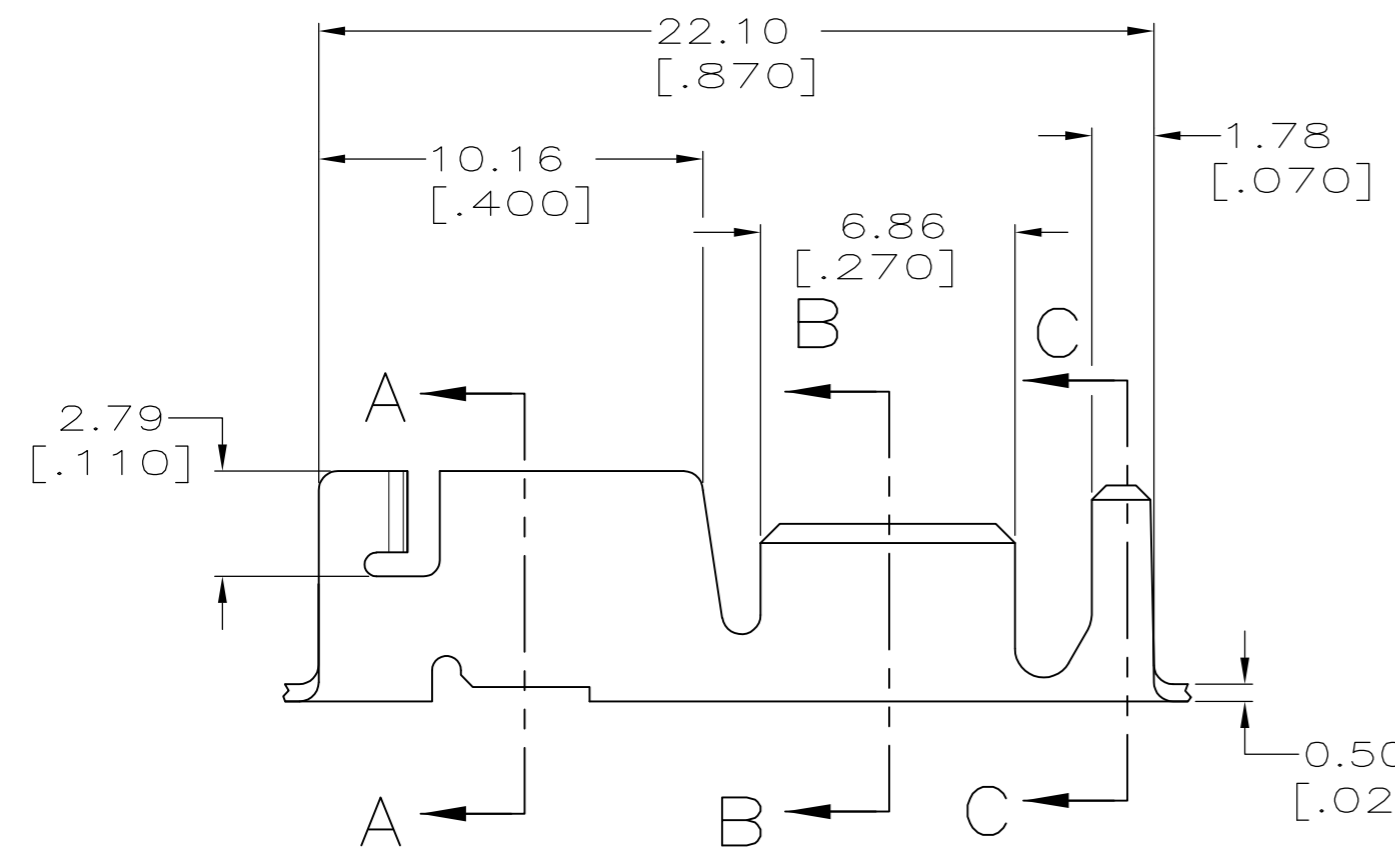
LOC	DIST	REVISIONS					
AF	50	P	LTR	DESCRIPTION	DATE	DWN	APVD
		D		REVISED PER ECR-14-006300	28AUG2014	MKD	RRP



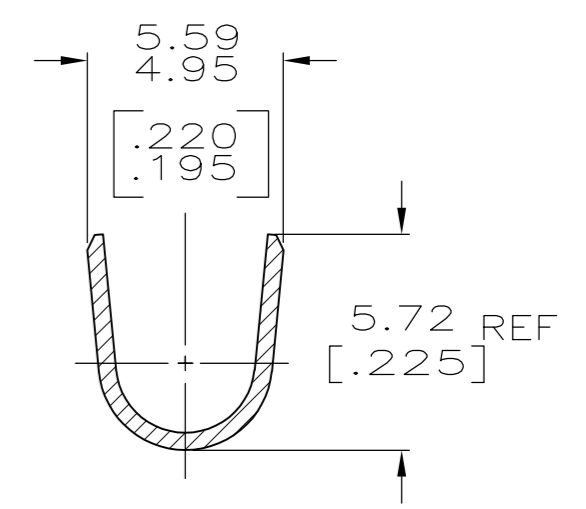
- CONTINUOUS STRIP ON REELS WITH TERMINALS LOCATED ON 23.75±0.08 [.935±.003] CENTERS.
- MEASURE CRIMP HEIGHT IN THIS AREA.
- FORMULA TO CALCULATE CRIMP HEIGHT:  

$$X = \frac{Y + 15200}{238100} \quad Y = \text{CMA}$$

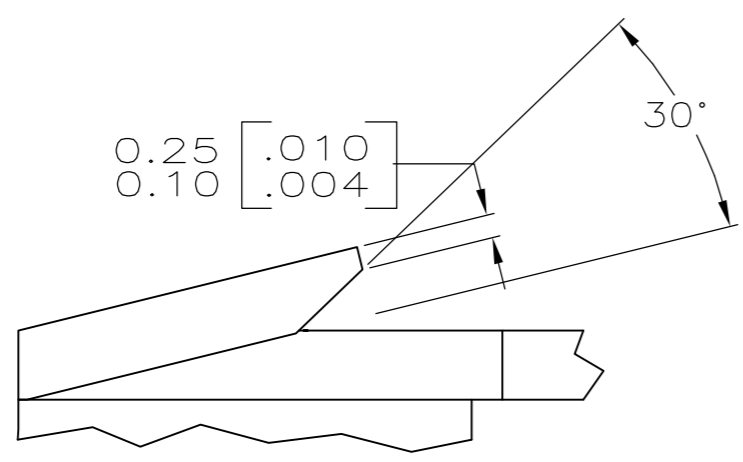
$$X = \text{CRIMP HEIGHT}$$
- HIGH RETENTION FEATURE.



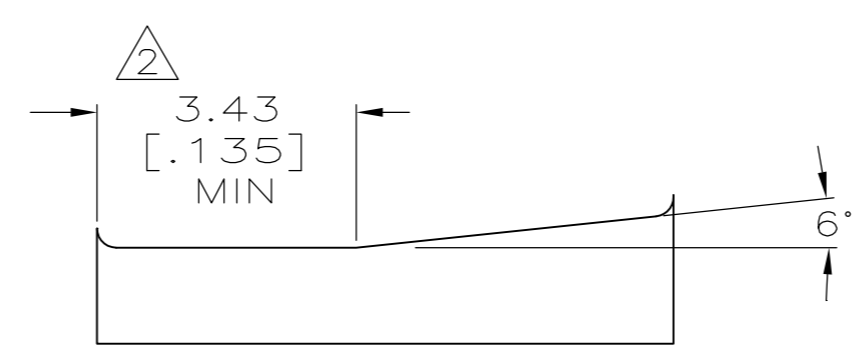
SECTION B-B



SECTION C-C



DETAIL E  
SCALE 20:1



CRIMP CONFIGURATION

2.29-4.32 DIA [.090-.170]	4000-8500 CMA	1217672-1
INSULATION RANGE	WIRE RANGE	PART NUMBER

THIS DRAWING IS A CONTROLLED DOCUMENT.		DWN JR RUTH 29JUN01				
DIMENSIONS: mm [INCHES]		CHK G PORTA 29JUN01				
TOLERANCES UNLESS OTHERWISE SPECIFIED:		APVD G PORTA 29JUN01	NAME RECEPTACLE, CLUSTER PIN, AMPLIVAR, 3.18[.125] DIA			
0 PLC ± -		PRODUCT SPEC 108-2008	SIZE A2	CAGE CODE 00779	DRAWING NO C=1217672	RESTRICTED TO -
1 PLC ± -		APPLICATION SPEC 114-2019	SCALE 5:1	SHEET 1 of 1	REV D	
2 PLC ± 0.25 [.010]		MATERIAL H03 TIN-BRASS	CUSTOMER DRAWING			
3 PLC ± -		FINISH POST TIN				
4 PLC ± -						
ANGLES ± -						