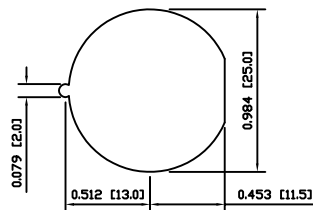
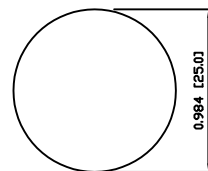


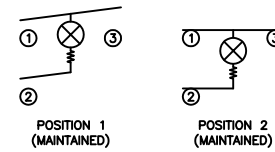
SUGGESTED PANEL CUTOUT



ALTERNATE PANEL CUTOUT



SCHEMATIC



SPECIFICATIONS

FUNCTION:
 1P1T OFF-ON

RATINGS:
 ANSI/UL 1054 and CAN/CSA C22.2 No.55 (E194579):
 16A 125VAC [UR, cUR]
 1/2HP 125VAC [UR, cUR]
 3/4HP 250VAC [UR, cUR]

EN 61058-1:2002:
 16(6)A 250V~ 1E4 T125/55 [ENEC14]
 10(4)A 250V~ 5E4 T125/55 [ENEC14]

ILLUMINATION VOLTAGE:
 125V

CONTACT RESISTANCE:
 Initial: 35mΩ Max. at 50VAC

INSULATION RESISTANCE:
 100MΩ Min. at 500VDC

DIELECTRIC STRENGTH:
 1,500VAC For 1 Minute

ELECTRICAL LIFE:
 6,000 Cycles [UR, cUR]
 10,000 Cycles [ENEC14]
 50,000 Cycles [ENEC14]

TEMPERATURE:
 Operating: -20°C to 105°C [UR, cUR]
 Operating: -20°C to 125°C [ENEC14]

APPROVALS:



COLORS AND MARKINGS

BODY:
 Black

ACTUATOR:
 Transparent Red
 Glossy Finish

MARKINGS:
 None

MARKING COLOR:
 None

MATERIALS

BODY:
 Polyamide 6/6 (PA66), UL94 V-2

ACTUATOR:
 Polycarbonate (PC), UL94 V-2

CONTACT CARRIER:
 Polyamide 6/6 (PA66), UL94 V-2

LAMP:
 Incandescent Bulb

RESISTOR:
 Carbon Film Resistor

SPRINGS:
 Steel

MOBILE CONTACT:
 Silver Plated Copper

CONTACTS:
 Silver Plated Copper

TERMINALS:
 Silver Plated Copper
 Brass

BODY	A	09/08/07	CAB
COLORS	A	09/08/07	CAB
MATERIALS	A	09/08/07	CAB
SPECIFICATIONS	B	10/05/25	CAB
REFERENCE	REV.	DATE	BY

THE INFORMATION CONTAINED IN THIS DOCUMENT IS PROPRIETARY TO E-SWITCH AND IS NOT TO BE COPIED OR TRANSFERRED

B	REMOVED SEMKO RATING	23310	04/16/18	MJR
A	INITIAL RELEASE	18848	11/04/15	CAB
REV.	DESCRIPTION	PCR	DATE	DRAWN BY

DIMENSIONS	
INCHES [MILLIMETERS]	
GENERAL TOLERANCES	
±0.008 [±0.2] / ±1'	
SCALE	PROJECTION
DRAWING NOT TO SCALE	1:1

PR141C1000-114			
ITEM NUMBER	DATE	REVISION	
38-PR141C1000114	AUGUST 15, 2011	B	