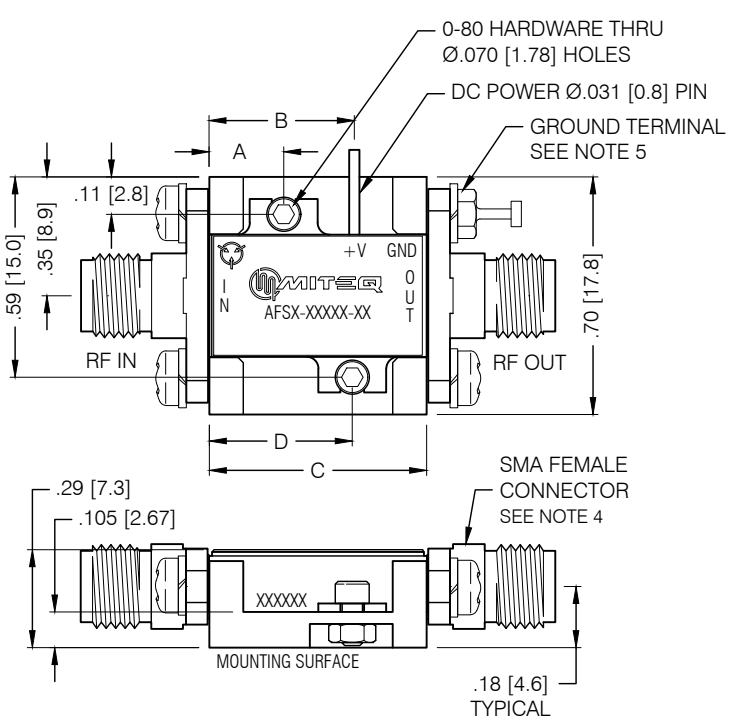


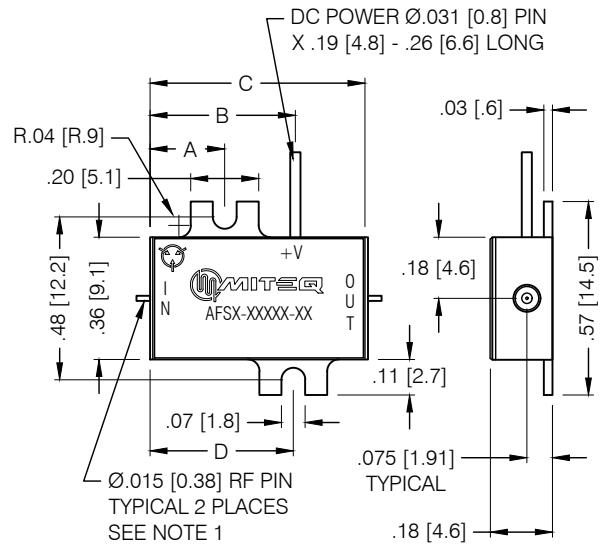
DASH NO.	APPLICATION		REVISIONS			
	NEXT ASSY	USED ON	LTR	DESCRIPTION	DATE	APPROVED
			P	Incorporated ECN 51206	08/27/20	L. KaMmer

PRINT NOT ON AUTOMATIC DISTRIBUTION VERIFY REVISION PRIOR TO USE



OPTION 1

AMPLIFIER MAY BE READILY USED AS IS, BY REMOVING EXISTING 0-80 HARDWARE AND SUBSTITUTING WITH LONGER 0-80 SCREWS FOR CUSTOMER MOUNTING



OPTION 2

"DROP-IN" AMPLIFIER BY REMOVING "SMA" CONNECTORS AND MOUNTING HARDWARE AS SHOWN

DASH	DIM A	DIM B	DIM C	DIM D
2	.16 [4.1]	.28 [7.1]	.43 [10.9]	.27 [6.9]
3	.16 [4.1]	.32 [8.1]	.53 [13.5]	.38 [9.7]
4	.22 [5.6]	.43 [10.9]	.64 [16.3]	.42 [10.7]
5	.22 [5.6]	.53 [13.5]	.75 [19.1]	.53 [13.5]
6	.22 [5.6]	.64 [16.3]	.86 [21.8]	.64 [16.3]
7	.22 [5.6]	.75 [19.1]	.97 [24.6]	.75 [19.1]
8	.22 [5.6]	.86 [21.8]	1.07 [27.2]	.86 [21.8]

NOTES

- RF PIN LENGTH FROM BODY TO BE 0.080 [2.03] NOMINAL, 0.050 [1.27] MIN, 0.100 [2.54] MAX
- DIMENSIONS SHOWN IN BRACKETS ARE IN MILLIMETERS
- MARKING MAY VARY
- STANDARD CONNECTOR CONFIGURATION SHOWN, FOR ALTERNATE GENDER OPTION ADD SUFFIX FM, MF, OR MM AT THE END OF DASH NUMBER
EXAMPLE: 113384-4MF (AFS DASH 4 WITH MALE INPUT AND FEMALE OUTPUT)
- ON BTO OPTION UNITS, GROUND TERMINAL IS NOT INSTALLED. REPLACED WITH SCREW AND LOCK WASHER. RF OUTPUT PORT WILL BE LABELED AS "RF OUT AND DC IN".

THESE ITEM(S)/TECHNOLOGY CONTAIN INFORMATION SUBJECT TO U.S. GOVERNMENT EXPORT CONTROL IN ACCORDANCE WITH THE EXPORT ADMINISTRATION REGULATIONS (EAR), 15 CFR PARTS 730-744. EXPORT OF THIS DATA TO ANY FOREIGN COUNTRY OR DISCLOSURE OF THIS DATA TO ANY NON-US PERSON MAY BE A VIOLATION OF FEDERAL LAW.

Narda-MITEQ PROPRIETARY

THIS DOCUMENT CONTAINS INFORMATION WHICH IS PROPRIETARY TO Narda-MITEQ. THE CONTENTS SHALL NOT BE DISCLOSED, COPIED, DISTRIBUTED, OR USED UNLESS AUTHORIZED BY AN OFFICER OF Narda-MITEQ.

UNLESS OTHERWISE SPECIFIED DIMENSIONS ARE IN INCHES TOLERANCES ON	NAME	DATE
	DWN <i>D Schmitz</i>	07/19/88
DECIMAL .X ±0.1 [2.5] DECIMAL .XX ±0.01 [0.25] DECIMAL .XXX ±0.005 [0.13] ANGLES X° ±30'	DFT DES	08/27/20
	PROJ ENGR <i>Joseph Buonaiuto</i>	08/27/20
PROJECTION	MFG ENGR	
	Q.C.	08/27/20
	CUST	



435 MORELAND RD HAUPPAUGE, NY 11788

**OUTLINE DRAWING
AFS SERIES AMPLIFIER**

SIZE	CODE IDENT. NO.		REV
A	99899	113384	P
SCALE	PROJECT	61/62	SHEET 1 OF 1