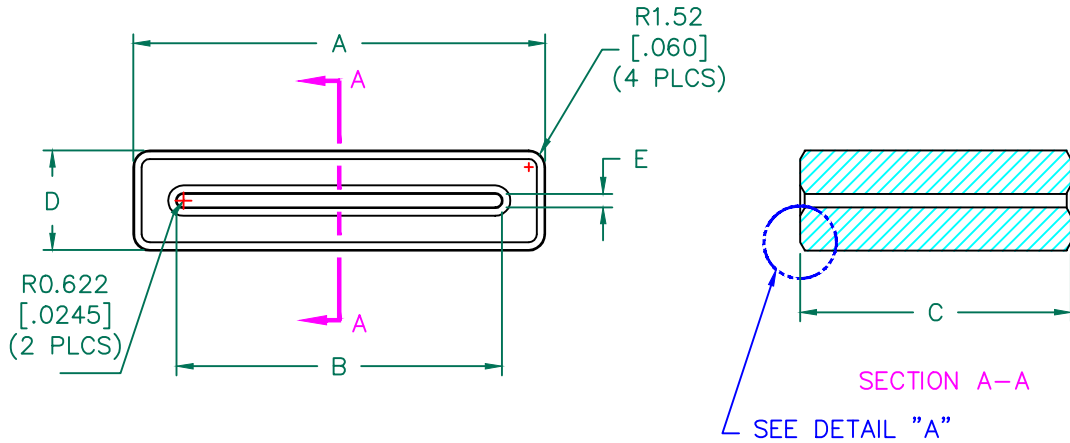
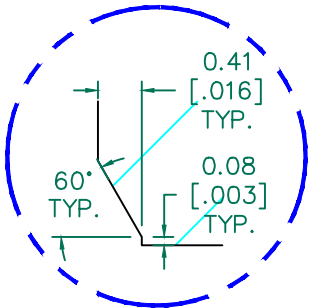
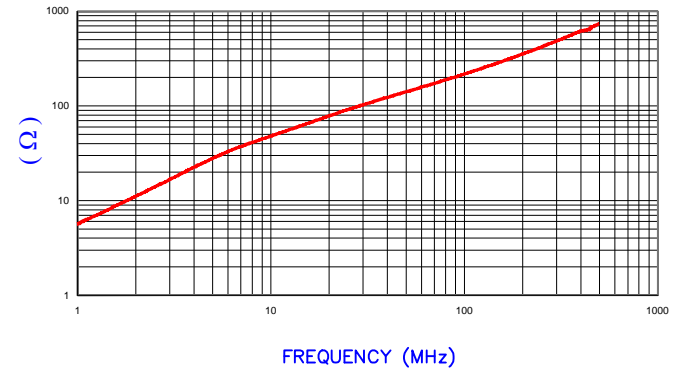


IMPEDANCE (Z)			
Frequency	25 MHz	100 MHz	300 MHz
Nominal (REF)	91 Ω	239 Ω	479 Ω
Minimum	- Ω	191 Ω	- Ω



Z vs. FREQUENCY
(REF. ONLY)



DETAIL "A"
CHAMFER
SCALE=15:1

**UNCONTROLLED
DOCUMENT**



AGILENT E4991A Impedance/Material Analyzer
HP 16092A-Test Fixture. TEST REF.5126

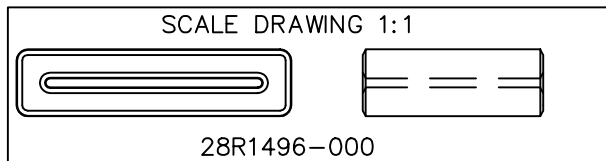
FERRITE CORE DIMENSIONS (SPEC): mm [in]

A	38.00 [1.496]	± 0.70 [.028]
B	30.00 [1.181]	± 0.50 [.020]
C	25.00 [.984]	± 0.50 [.020]
D	9.25 [.364]	± 0.55 [.022]
E	1.25 [.049]	+ 0.40 [.016] - 0.20 [.008]

WEIGHT/1000 38.38 kgs [84.60 Lbs]

NOTES: UNLESS OTHERWISE SPECIFIED

1. COSMETIC SPECIFICATION REFER TO WI-QA-038.



DIMENSIONS ARE IN mm[INCHES].				This print is the property of Laird Tech. and is loaned in confidence subject to return upon request and with the understanding that no copies shall be made without the written consent of Laird Tech. All rights to design or invention are reserved.		Laird	
E	UPDATE COMPANY LOGO	06/19/15	QIU	PROJECT/PART NUMBER:	REV	DRAWN BY:	
D	UPDATE 100 MHZ Z SPEC MIN VALUE	07/27/07	TMB	28R1496-000	E	JRK	
C	COR. Z SPEC @100 MHZ UPDATE LOGO	04/26/07	JRK				
B	ADD CURVE AND Z SPECS	09/14/05	JRK	DATE: 09/30/04	SCALE: 1.5 : 1	MATERIAL:	
A	ORIGINAL DRAFT	09/30/04	JRK	CAD #	TOOL # R1496	FERRITE	
REV	DESCRIPTION	DATE	INT	28R1496-000-E			