

4

3

2

1


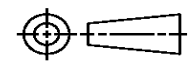
THIS DRAWING IS UNPUBLISHED. RELEASED FOR PUBLICATION
 © COPYRIGHT ALL RIGHTS RESERVED.

LOC	DIST	REVISIONS			
P	LTR	DESCRIPTION	DATE	DWN	APVD
	C1	ECR-16-009824	27JUL2016	GK	SD

REPLACED BY OCEAN STYLE APPLICATOR PART NUMBER 2150656-1

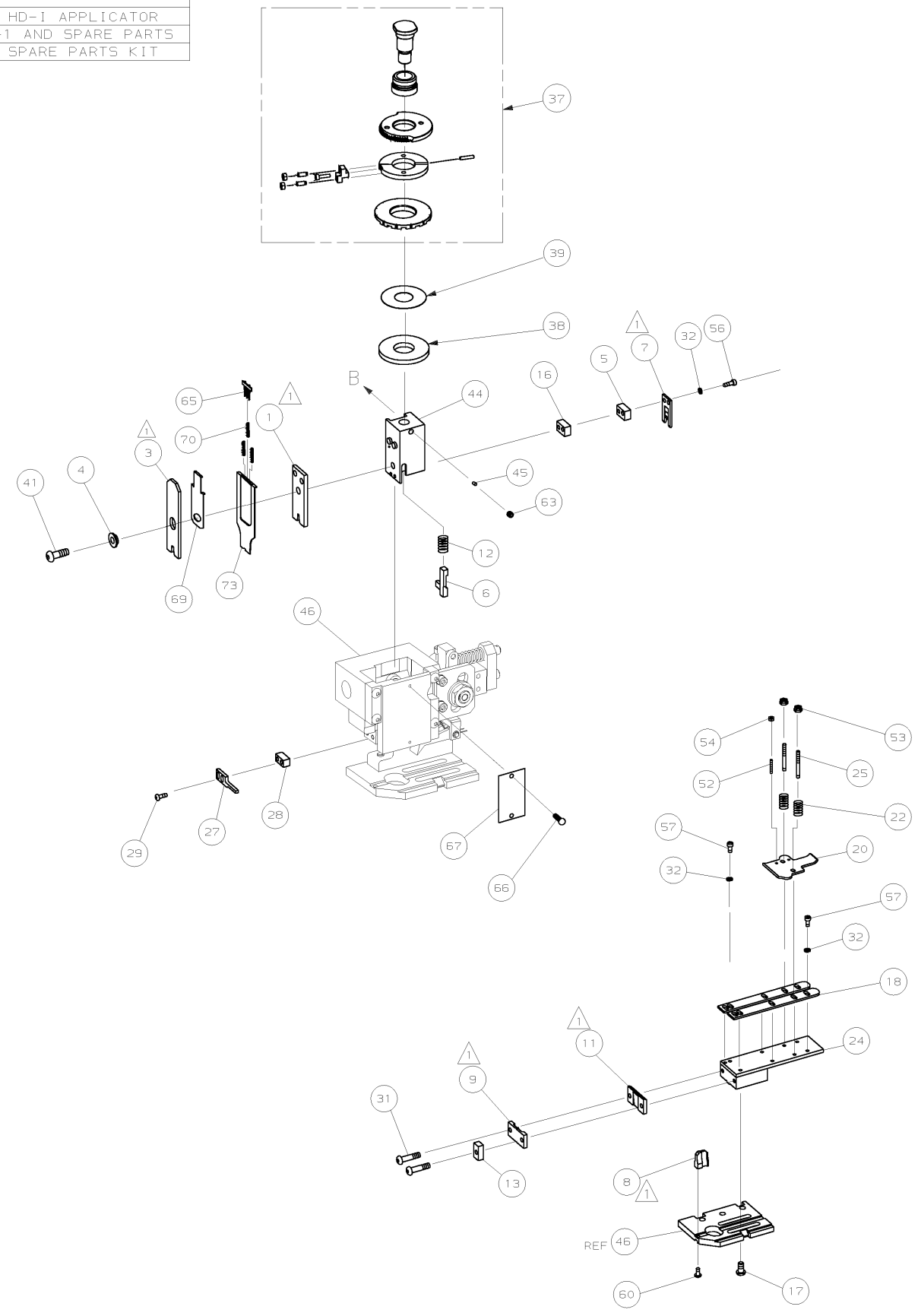
FOR REPLACEMENT PARTS FOR APPLICATOR 1529023
 REFER TO ADDITIONAL PAGE(S). SPARE PARTS KIT (IF LISTED)
 WILL REMAIN AVAILABLE.

THE REPLACEMENT OCEAN STYLE APPLICATOR HAS THE
 SAME TERMINATOR/PRESS INTERFACE AS APPLICATOR
 1529023

THIS DRAWING IS A CONTROLLED DOCUMENT.		DWN	GOPALAKRISHNA HV		 TE Connectivity
DIMENSIONS:		CHK	GOPALAKRISHNA HV		
		TOLERANCES UNLESS OTHERWISE SPECIFIED:		NAME	
0 PLC ± 1 PLC ± 2 PLC ± 3 PLC ± 4 PLC ± ANGLES ±		APVD		FINE ADJ END FD HD-I APPL	
MATERIAL		FINISH		PRODUCT SPEC	
				APPLICATION SPEC	
				SIZE	RESTRICTED TO
				A3	
				CAGE CODE	DRAWING NO
					©- 1529023
				WEIGHT	
				CUSTOMER DRAWING	SCALE
					SHEET 1 OF 2
					REV C1

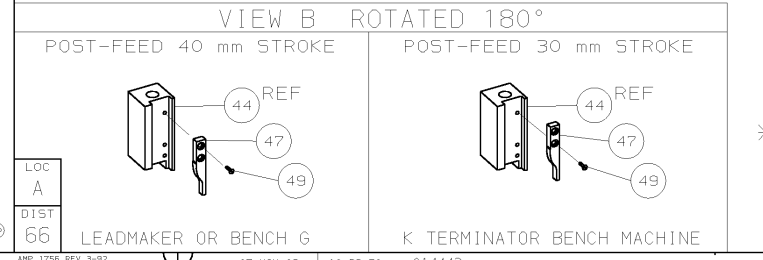
PART NUMBER	REV	FIRST USED	TERMINATOR	FEED TYPE	DESCRIPTION
1529023-1	C		- BENCH & LEADMAKER	MECH POST FEED	HD-I APPLICATOR
7-1529023-1	C		- BENCH & LEADMAKER	MECH POST FEED	-1 AND SPARE PARTS
7-1529023-7	C		-	-	SPARE PARTS KIT

CRIMP DATA AMP TERMINAL AMP CRIMP SPECS			
TERMINAL NAME: 6.35MM EASY MATE CONTACT RECEPTACLE			
CRIMP	SIZE	TYPE	RANGE
WIRE	2.29 [.090 IN]	F	0.32 - 0.75mm ²
INSUL	3.30 [.130 IN]	F	2.00-3.00 [.079-.118 IN]
WIRE STRIP LENGTH		APPL INSTRUCTION	
4.50-5.00 [.177-.197 IN]		408-8323 & 408-8490	
TERMINAL APPL SPEC		FEED	
114-22017		18.40 [.724 IN]	
TERMINALS APPLIED			
336074	-	-	-
-	-	-	-
-	-	-	-
-	-	-	-
-	-	-	-
-	-	-	-
-	-	-	-
-	-	-	-
-	-	-	-
WIRE SIZE	CRIMP HEIGHT	REF SETTING	
mm ² AWG	*	*	
0.75mm ²	1.40 ±0.05 [.055 ±.002 IN]	C4	
0.50mm ²	1.32 ±0.05 [.052 ±.002 IN]	C9	
0.32mm ² or 0.35mm ²	1.20 ±0.05 [.047 ±.002 IN]	D9	



QTY	REV	PART NO	DESCRIPTION	ITEM NO	
-	1	1	1490525-3	DEPRESSOR, WIRE	73
-	1	1	1529023	PRINT, APPLICATOR LOG SHEET	72
-	1	1	1338705-4	DOCUMENTATION PACKAGE	71
-	3	3	2-23147-2	SPRING, DEPRESSOR	70
-	1	1	1490524-1	SPACER, DEPRESSOR	69
-	-	-	-	-	68
-	1	1	461264-5	PLATE, IDENTIFICATION	67
-	2	2	21017-2	SCR,DRIVE (#2X.19) ID PLATE	66
-	1	1	1424350-1	HOLDER, PIN, WIRED	65
-	-	-	-	-	64
-	1	1	3-18031-0	SCR,SKT SET (M6X6) RAM	63
-	-	-	-	-	62
-	-	-	-	-	61
-	1	1	18024-7	SCR,BHC (M4X10) ANVIL	60
-	-	-	-	-	59
-	-	-	-	-	58
-	6	6	18023-9	SCR,SHC (M4X6) STRIP GUIDE	57
-	2	2	1-18023-2	SCR,SHC (M4X12) SLUG BLADE	56
-	-	-	-	-	55
-	2	2	18029-1	NUT, HEX (M3) DRAG	54
-	2	2	986965-1	NUT, HEX SL (M4) DRAG STUD	53
-	2	2	2-18032-2	SCR,SKT SET (M3X10) DRAG	52
-	-	-	-	-	51
-	-	-	-	-	50
-	1	1	18024-3	SCR,BHC (M3X10) CAM	49
-	-	-	-	-	48
-	1	1	1338676-1	CAM, POST-FEED 30 & 40 mm ST	47
-	1	1	1338662-1	APPLICATOR, BASIC (SUBASSY)	46
-	1	1	690191-1	PLUG, NYLON	45
-	1	1	1320998-1	RAM	44
-	-	-	-	-	43
-	-	-	-	-	42
-	1	1	2-18024-6	SCREW,BHC (M8X25) CRIMPER	41
-	-	-	-	-	40
-	1	1	690125-1	SHIM SUBASSY	39
-	1	1	469367-8	SPACER, FINE ADJUST	38
-	1	1	879103-2	FINE ADJUST HEAD SUBASSY	37
-	-	-	-	-	36
-	-	-	-	-	35
-	-	-	-	-	34
-	-	-	-	-	33
-	8	8	18025-2	WASHER, LOCK (M4) SHEAR BL	32
-	2	2	1-18024-0	SCR,BHC (M4X20) SHEAR PL	31
-	-	-	-	-	30
-	2	2	18024-8	SCR,BHC (M4X12) STRIPPER	29
-	1	1	3-690451-2	SPACER, STRIPPER	28
-	1	1	240639-1	STRIPPER	27
-	-	-	-	-	26
-	2	2	1320906-1	DRAG, STUD	25
-	1	1	1320995-1	STRIP GUIDE	24
-	-	-	-	-	23
-	2	2	4-22281-1	SPRING, DRAG	22
-	-	-	-	-	21
-	1	1	1338665-1	DRAG, STOCK	20
-	-	-	-	-	19
-	2	2	1338663-7	GUIDE, LOWER STRIP	18
-	4	4	1-18024-8	SCR,BHC (M6X12) STRIP GD PL	17
-	1	1	1338708-1	SPACER, SLUG BLADE	16
-	-	-	-	-	15
-	-	-	-	-	14
-	1	1	690481-2	SPACER, HOLD DOWN	13
-	1	1	23846-1	SPRING, HOLD DOWN	12
-	1	1	240644-1	PLATE, REAR SHEAR	11
-	-	-	-	-	10
-	1	1	690482-6	PLATE, FRONT SHEAR	9
-	1	2	1333217-2	ANVIL	8
-	1	1	690474-6	BLADE, SLUG	7
-	1	1	2-455892-9	HOLD DOWN, TERMINAL	6
-	1	1	1-240641-6	SPACER, SLUG BLADE	5
-	1	1	238009-1	SPACER, BLOCK CRIMPER	4
-	1	2	1424909-2	CRIMPER, INSULATION	3
-	-	-	-	-	2
-	1	2	1-456420-2	CRIMPER, WIRE	1

- 1. RECOMMENDED SPARE PARTS.
- 2. GREASE RAM, CAM, CAM FOLLOWER AND FEED ROD LIGHTLY.
- 3. LUBRICATE DAILY PER THE APPLICATOR INSTRUCTION SHEET SUPPLIED WITH THE APPLICATOR.



*** WARNING:**
ON INSTALLATION, SET WIRE DISC TO LARGEST WIRE SIZE SETTING. USE OF SETTINGS BELOW MIN REQ'D CRIMP HEIGHT SETTING WILL CAUSE DAMAGE TO CRIMP TOOLING.

LOC A
DST 66
LEADMAKER OR BENCH G
K. TERMINATOR BENCH MACHINE

QTY REQD PER ASSY	REVISION OF EACH ASSY NO (WHEN BLANK, USE DWG REVISION)	PARTS LIST	MATL	HT TR	FIN
-	-	-	-	-	-
DIMENSIONS: mm (INCHES)					
DO NOT SCALE PRINT.					
TOLERANCES UNLESS OTHERWISE SPECIFIED:					
1 PLC DEC ±					
2 PLC DEC ±					
3 PLC DEC ±					
ANGLES ±					
SURF TEXTURE:					
REMOVE BURRS, BREAK SHARP EDGES RO.3B MAX					
C	0150-1440-02	CE	NOV02		
B	ECN 0150-0833-02	DS	16-02		
A1	SEE ECN 015A-0365-02	MC	MAY02		
A	SEE ECN 015A-0183-02	MC	MAR02		
P	F LTR	REVISION RECORD	APP	DATE	
DR M. CLIFFORD 19MAR02 APP F. BACKHURST 19MAR02					
CHK - REL 19-03-02 M. CLIFFORD					
NAME FINE ADJ END FD HD-I APPL MACHINE REF HD-I APPL					
SCALE - D DWG NO 1529023 SHEET 1 of 1 REV C					
CASE CODE 00779 CUSTOMER AND ASSEMBLY DRAWING RESTRICTED TO					

THIS DRAWING IS A CONTROLLED DOCUMENT

LAYOUT L1339522 SET UP GAGE 458638-3

2000

RELEASED FOR PUBLICATION BY AMP INCORPORATED. ALL RIGHTS RESERVED.

THIS DRAWING IS UNPUBLISHED. COPYRIGHT 2000