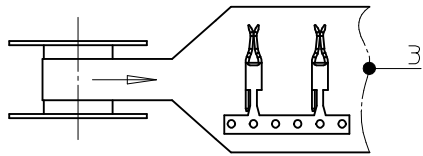
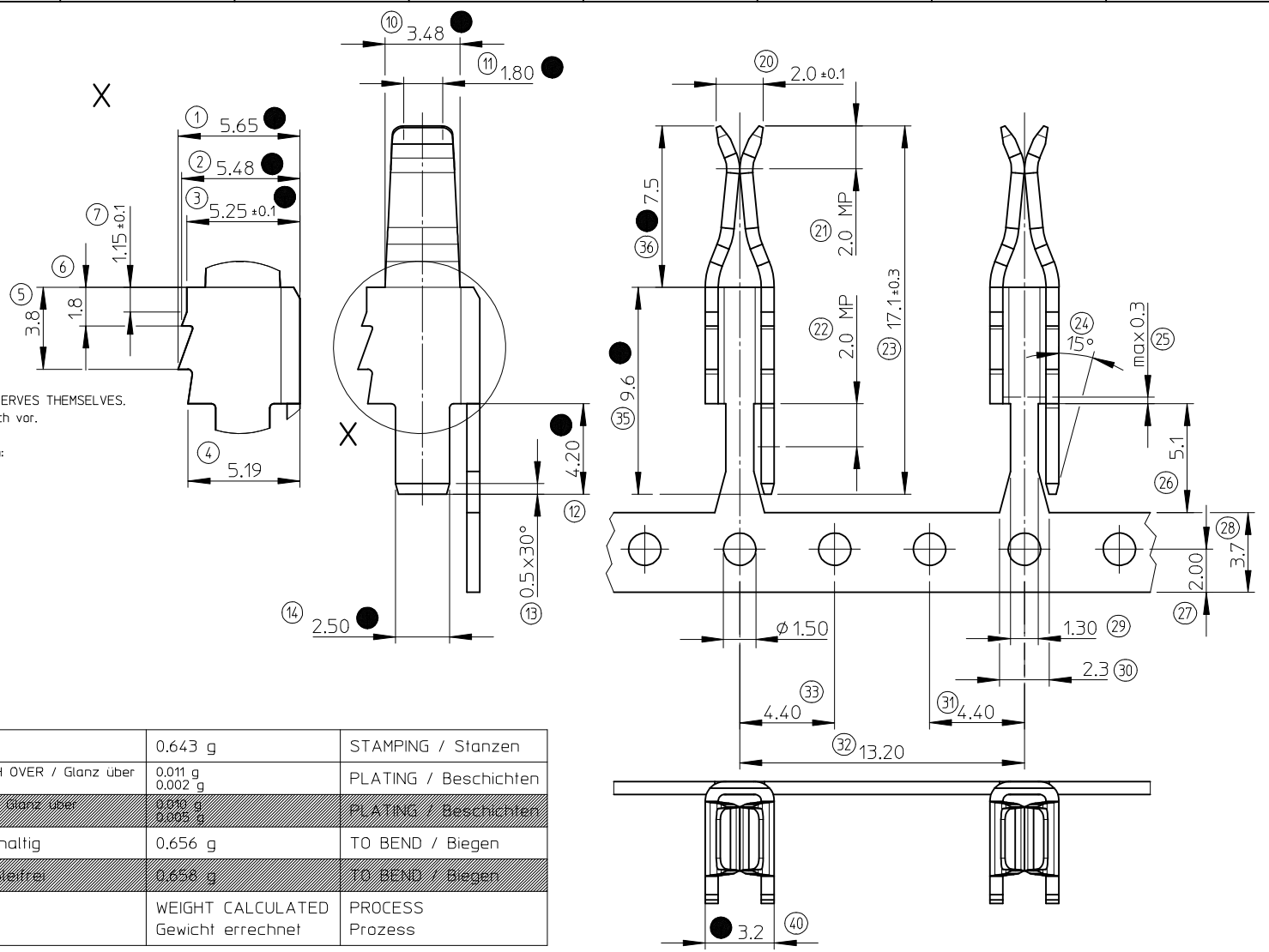


NOTES
Bemerkungen

- 3- UNREEL DIRECTION AFTER PLATING
Abwickelrichtung nach dem Beschichten
- 4- FUNCTIONAL DIMENSION
Funktionsmaß
- 5- CRITICAL PROPERTIES
Kritische Eigenschaften
- 6- MP = MEASUREMENT POINT
MP = Messpunkt
- 7- NON DIMENSIONED RADII
Nicht bemessene Radien
- 8- NON DIMENSIONED EDGES ARE NOT SCALED.
Nicht vermaßte Kanten sind nicht Maßstäblich.
- 9- MODIFICATION TO BE SERVE THE TECHNICAL PROGRESS, MOLEX RESERVES THEMSELVES.
Änderungen die dem technischen Fortschritt dienen, behält Molex sich vor.
- 10- USED DIMENSION POSITION NUMBERS / Benutzte Maßpositionsnummern:
1-7, 10-14, 20-36, 40
- 5- NO BURR ON CONTACT AREA RELATED TO THR FUSE ALLOWED
Kein Grat an der Kontaktfläche zur Sicherung erlaubt



0985020001	0980600063	BLANK /Blank	0.643 g	STAMPING / Stanzen
0985021301	0985020001	3-5µm SnPb 90/10 POLISH OVER / Glanz über 0.5-1.0µm Ni	0.011 g 0.002 g	PLATING / Beschichten
0985021401	0985020001	3-5µm Sn POLISH OVER / Glanz über 1.5-2.5µm Ni	0.010 g 0.005 g	PLATING / Beschichten
0985021001	0985021301	FINISH LEADED /Bleihaltig	0.656 g	TO BEND / Biegen
0985021002	0985021401	FINISH UNLEADED/ Bleifrei	0.658 g	TO BEND / Biegen
MATERIAL NO. Material Nr.	MADE OF Gefertigt aus	SURFACE ACC. TO Oberfläche nach	WEIGHT CALCULATED Gewicht errechnet	PROCESS Prozess



REVISED	DESCRIPTION
EC NO: G2010-0040	
DRWN:MLUTZ 2009/09/15	
CHKD:JGTUR/ATO 2009/09/15	
APPR:HD/LETZ 2009/09/16	

QUALITY SYMBOLS	GENERAL TOLERANCES (UNLESS SPECIFIED)
▽=0	mm INCH
◇=0	4 PLACES ± --- ± ---
	3 PLACES ± --- ± ---
	2 PLACES ± 0.05 ± ---
	1 PLACE ± 0.1 ± ---
	ANGULAR ± 1/2°
	DRAFT WHERE APPLICABLE MUST REMAIN WITHIN DIMENSIONS

DIMENSION STYLE MM ONLY	SCALE 5:1	DESIGN UNITS METRIC	FIRST ANGLE PROJECTION
DRAWN BY OGA	DATE 2006/11/14	TITLE FUSE CLIP	
CHECKED BY SFA	DATE 2006/11/14	MOLEX INCORPORATED	
APPROVED BY MC1	DATE 2006/11/14	DOCUMENT NO. SD-98502-001	SHEET NO. 1 OF 1
MATERIAL NO. See Table	THIS DRAWING CONTAINS INFORMATION THAT IS PROPRIETARY TO MOLEX INCORPORATED AND SHOULD NOT BE USED WITHOUT WRITTEN PERMISSION		