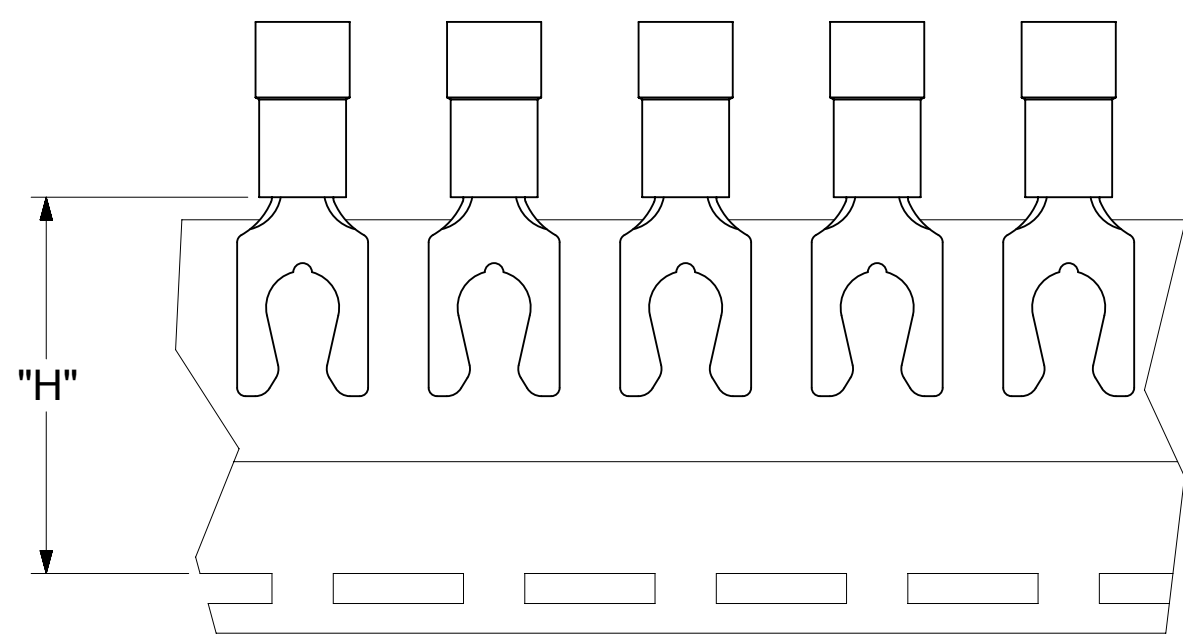
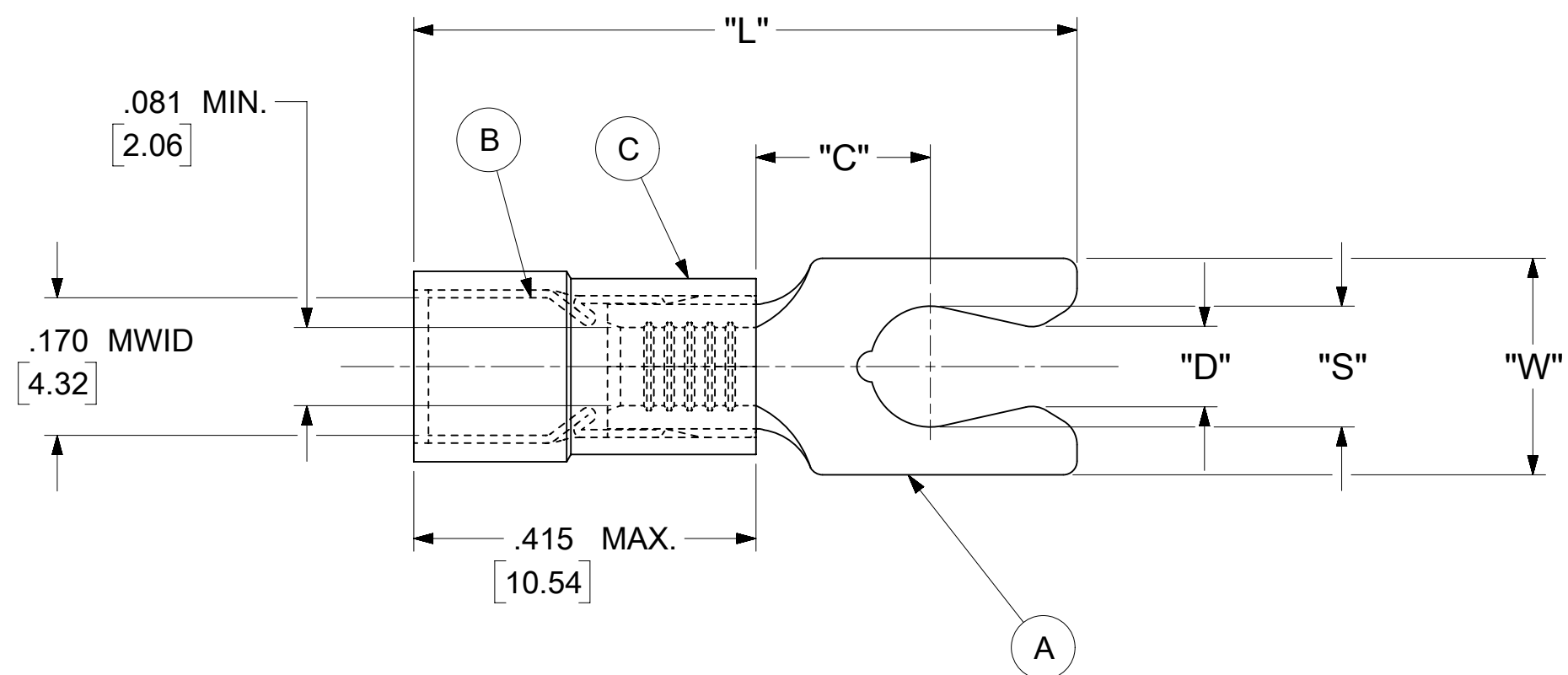


LOOSE PIECE		TAPE MOUNTED		SPECIFICATIONS						
MATERIAL NUMBER	ENGINEERING NUMBER	MATERIAL NUMBER	ENGINEERING NUMBER	STUD SIZE	"S" ±.005 [0.13]	"W" ±.010 [0.25]	"C" MIN.	"L" MAX.	"D" ±.005 [0.13]	"H"
191150022	BB-8707-05	---	---	5	.127 [3.23]	.250 [6.35]	.230 [5.84]	.825 [20.96]	1.05 [2.67]	---
191150024	BB-8707-06	191150025	BB-8707-06T	6	.146 [3.71]	.250 [6.35]	.230 [5.84]	.825 [20.96]	.114 [2.90]	.980 [24.89]



- NOTES:
- MATERIAL:
    - (A). TERMINAL: COPPER (STOCK THICKNESS .031±.001 [0.79] )
    - PLATING: ELECTRO-TIN (.0003 MIN.)
    - (B). TIN-PLATED BRASS FUNNEL FERRULE
    - (C). INSULATION: NYLON (COLOR CODED BLUE)
  - MWID: MAXIMUM WIRE INSULATION DIAMETER
  - WIRE SIZE: 16 -14 AWG  
1.0 -2.5 MM<sup>2</sup>
  - "UL" LISTING #E32244  
"CSA" LISTING #18689
  - ALL DIMENSIONS IN INCHES/[MM].
  - PARTS ARE ROHS COMPLIANT.
  - DIMS. SHOWN ARE FOR REFERENCE ONLY.

SYMBOLS	THIS DRAWING CONTAINS INFORMATION THAT IS PROPRIETARY TO MOLEX ELECTRONIC TECHNOLOGIES, LLC AND SHOULD NOT BE USED WITHOUT WRITTEN PERMISSION									
	DIMENSION UNITS		SCALE		CURRENT REV DESC: MIGRATION TO ECTR/NX					
	INCH/MM		NTS		EC NO: 621540 DRWN: ABENJAMINLW 2019/07/24 CHK'D: GROJAS01 2019/07/29 APPR: JMACNEIL 2019/08/05 INITIAL REVISION: DRWN: JJ 1984/11/09 APPR: JMACNEIL 2019/08/05					
	GENERAL TOLERANCES (UNLESS SPECIFIED)									
▽ = 0	4 PLACES	±	---	±	---	PRODUCT CUSTOMER DRAWING DOCUMENT NUMBER: 191150022 DOC TYPE: PSD DOC PART: 000 REVISION: A MATERIAL NUMBER: SEE TABLE CUSTOMER: GENERAL MARKET SHEET NUMBER: 1 OF 1				
▽ = 0	3 PLACES	±	---	±	.005					
▽ = 0	2 PLACES	±	0.13	±	.01					
▽ = 0	1 PLACE	±	0.25	±	---					
☒ = 0	0 PLACES	±	---	±	---					
■ = 0	ANGULAR TOL ± 0.5 °									
▽ = 0	DRAFT WHERE APPLICABLE MUST REMAIN WITHIN DIMENSIONS		THIRD ANGLE PROJECTION		DRAWING		SERIES			
			C-SIZE		19115					

**NOTES:**

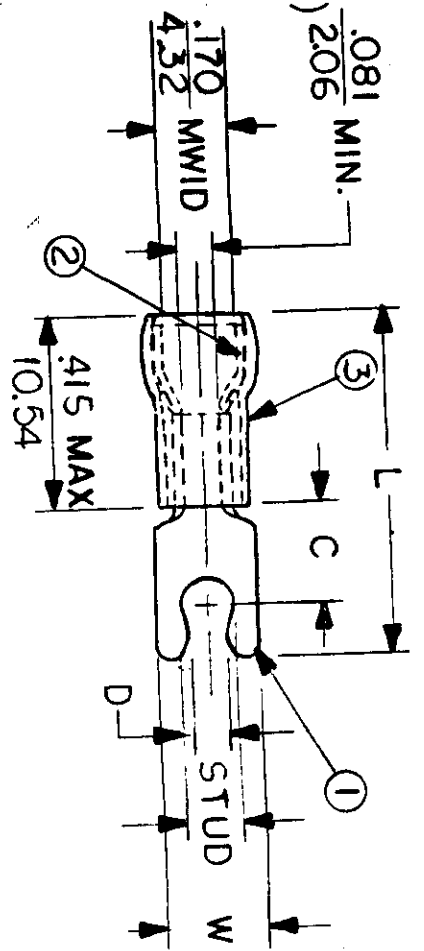
- ① MAT'L: COPPER (STOCK TKN.  $\frac{.031}{.79}$ )
- ② PLATING: ELECTRO TIN (.0003 MIN)
- ③ TIN-PLATED BRASS FUNNEL FERRULE
- ④ NYLON INSULATION (COLOR CODED BLUE)  $\frac{.081}{206}$  MIN.

STUD SIZES: ( $\pm .005$ )

- 02 = .094
- 04 = .119
- 06 = .146
- 08 = .173
- 10 = .198
- 14 = .265
- 56 = .328
- 38 = .390

"UL" LISTING # E32244  
 "CSA" LISTING # 18689

WIRE SIZE: 16 - 14 AWG  
 10 - 25 MM<sup>2</sup>



ALL DIMENSIONS =  $\frac{\text{INCHES}}{\text{MM}}$  (MWID) = DENOTES MAXIMUM WIRE INSULATION DIAMETER

PART NUMBER	"W" $\pm .010$	"C" MIN.	"L" MAX.	"D" $\pm .005$	AVAILABLE STUD SIZES	DIMENSIONAL TOLERANCES UNLESS OTHERWISE SPECIFIED		REFERENCE	SCALE: NTS	DATE	TITLE:	DWG. NO.	CUSTOMER DWG
						DEC. $\pm$	ANG. $\pm$						
BB-8707	$\frac{.250}{6.35}$	$\frac{.230}{5.84}$	$\frac{.825}{20.96}$	$\frac{1.05}{2.67}$	05 ( $\frac{.127 \pm .005}{3.23}$ )					11-9-84	SNAP SPADE SHORT TONGUE TERMINAL AVIKRIMP 800-SERIES	A	
BB-8707-	$\frac{.250}{6.35}$	$\frac{.230}{5.84}$	$\frac{.825}{20.96}$	$\frac{1.14}{2.90}$	06					11-29-84			



CUSTOMER DWG