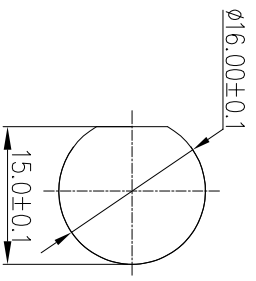
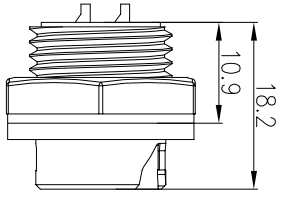


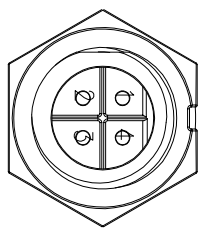
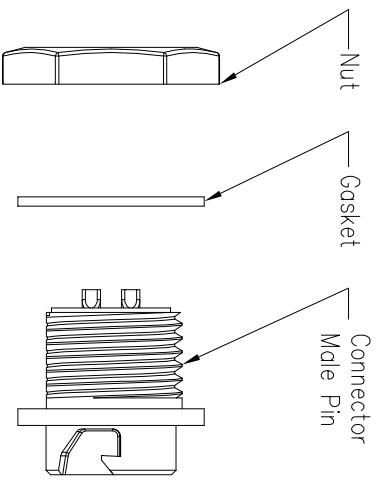
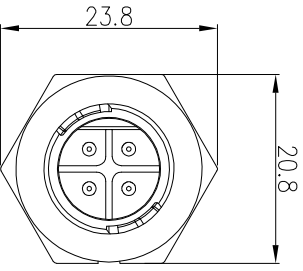
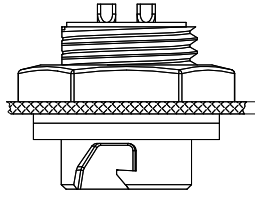
REV.	EN. NO.	DESCRIPTION	SIGN	DATE
C1	N/A	INITIAL DRAWING	Liu	2019/08/13



Recommended Panel Cut-Out

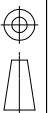


Panel T: Max 3.0



P/N: 22004535-03

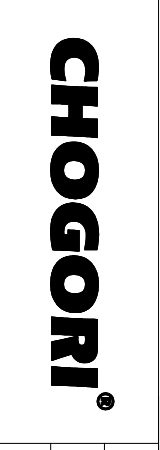
Pin Assignments  
Front View



UNIT: mm

TOLERANCE	±0.25
X	±0.15
.XX	±0.05
.XXX	±0.05
ANGLES	±1°

DESCRIPTION	SCALE	SIZE	SHEET	OF
Standard Series Push Lock Rear Mount With Male Pin	1:1	A4	1	1



PART NO	DRAWN BY	DATE
22XXXX535-03	Liu	2019/08/13
DWG NO	CHECKED BY	DATE
CUSTOMER	Mo	2019/08/13
APPROVED BY	DATE	
Ponson	2019/08/13	

- Specification:
1. Operation Temperature: -45°C~105°C.
  2. Insulation Resistance: 100MΩ at DC500V.
  3. Contact Resistance: <10mΩ.
  4. Withstand Voltage: 1500V AC, 1min
  5. Operating Current: 10A
  6. Operating Voltage: AC 125V
  7. Waterproof Rate: IP67 (Mated)
  8. Housing: Nylon, Black
  9. Male Pin: Copper Alloy, Gold Plated
  10. Gasket: Silicon Gray
  11. Panel Nut: Nylon, Orange
  12. Torque Rate: 0.8~1.0N•m
  13. RoHS Compliant.
  14. UL Compliant.
  15. Mating Cap P/N: 806-00053-01