

**SAW Filter 1090.0MHz**

**Model: TA0691A**

**Part No: MA09528**

**Rev No: 2**

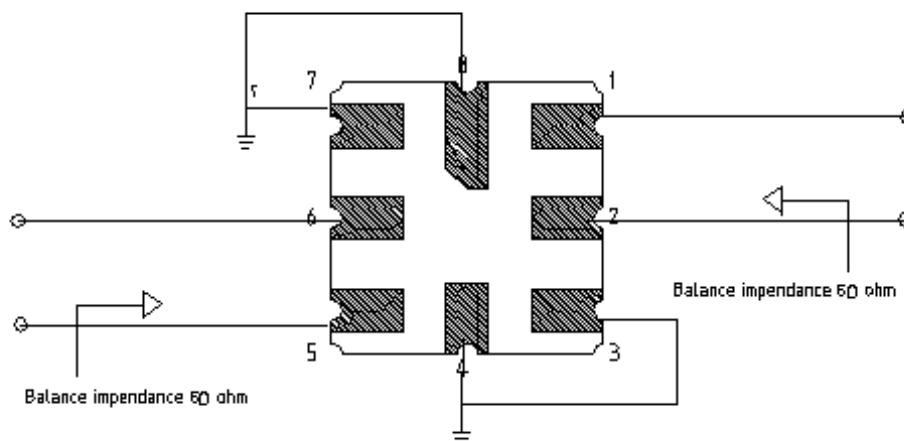
**A. MAXIMUM RATING:**

1. Input Power Level: 20dBm
2. DC voltage: 0 V
3. Operating Temperature: -40°C to +85°C
4. Storage Temperature: -40°C to +85°C

**B. CHARACTERISTICS:**

Item	Min.	Typ.	Max.
Center frequency Fc MHz	-	1090	-
Insertion loss 1084 ~ 1096MHz IL (dB)	-	4.33	5.3
Amplitude ripple 1084 ~ 1096MHz (dB)	-	0.37	1.5
Attenuation (Reference level from 0dB)			
500 ~ 924MHz (dB)	45	52	-
924 ~ 944MHz (dB)	45	58	-
944 ~ 1051MHz (dB)	40	45	-
1051 ~ 1061MHz (dB)	30	39	-
1170 ~ 2000MHz (dB)	40	41.5	-
Balanced to balanced operation			
Source impedance Z <sub>S</sub> (Ω)	-	50	-
Load impedance Z <sub>L</sub> (Ω)	-	50	-

**C. MEASUREMENT CIRCUIT:**



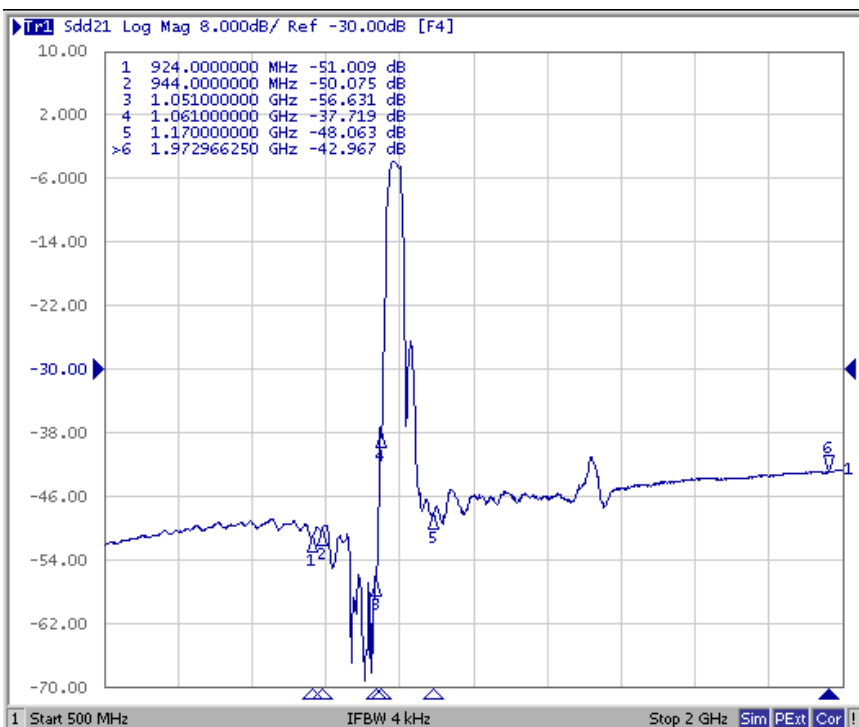
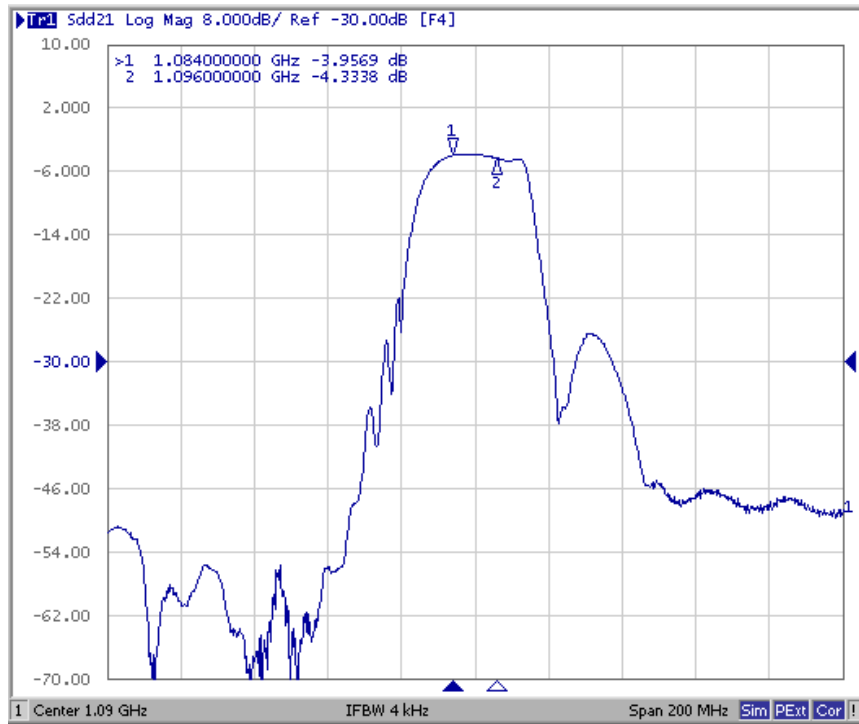
**SAW Filter 1090.0MHz**  
**Part No: MA09528**

**Model: TA0691A**  
**Rev No: 2**

**D. FREQUENCY CHARACTERISTICS:**

Transfer Function

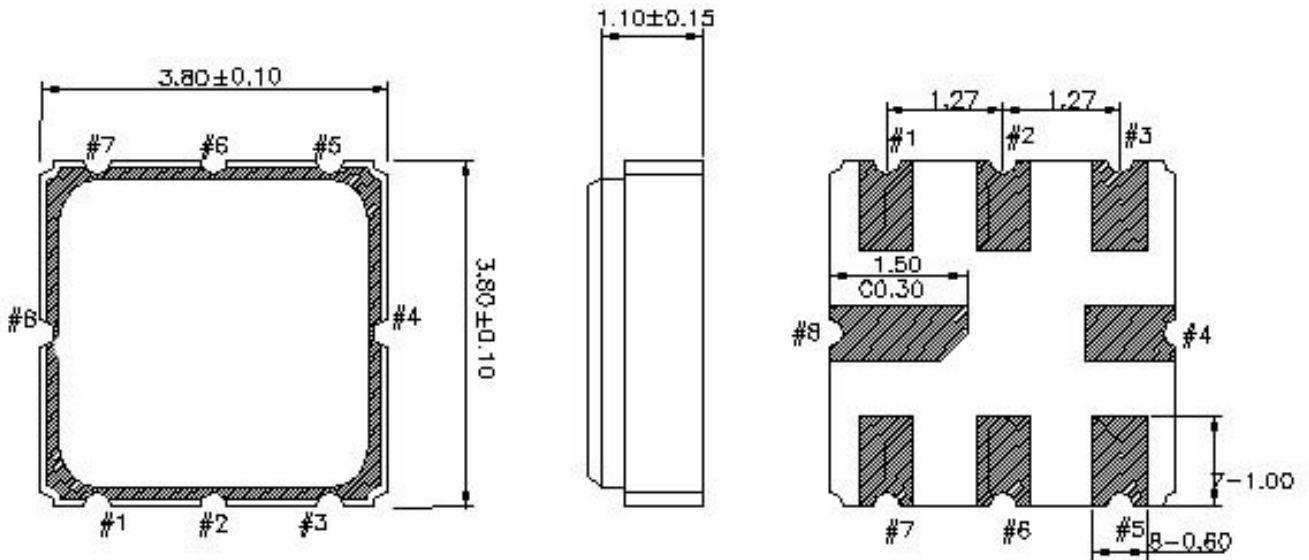
Narrowband



**SAW Filter 1090.0MHz**  
**Part No: MA09528**

**Model: TA0691A**  
**Rev No: 2**

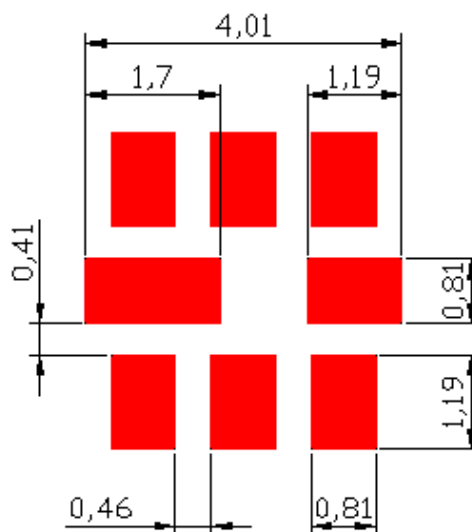
**E. OUTLINE DRAWING:**



**#1,2 : Balance Input**  
**#5,6 : Balance Output**  
**#3,4,7,8: Ground**

**Unit : mm**

**F. PCB FOOTPRINT:**



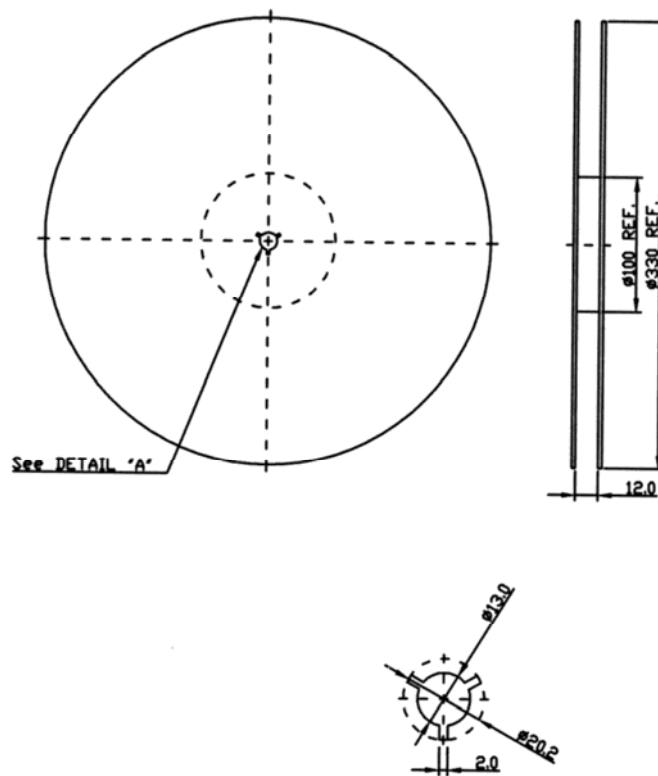
**SAW Filter 1090.0MHz**  
**Part No: MA09528**

**Model: TA0691A**  
**Rev No: 2**

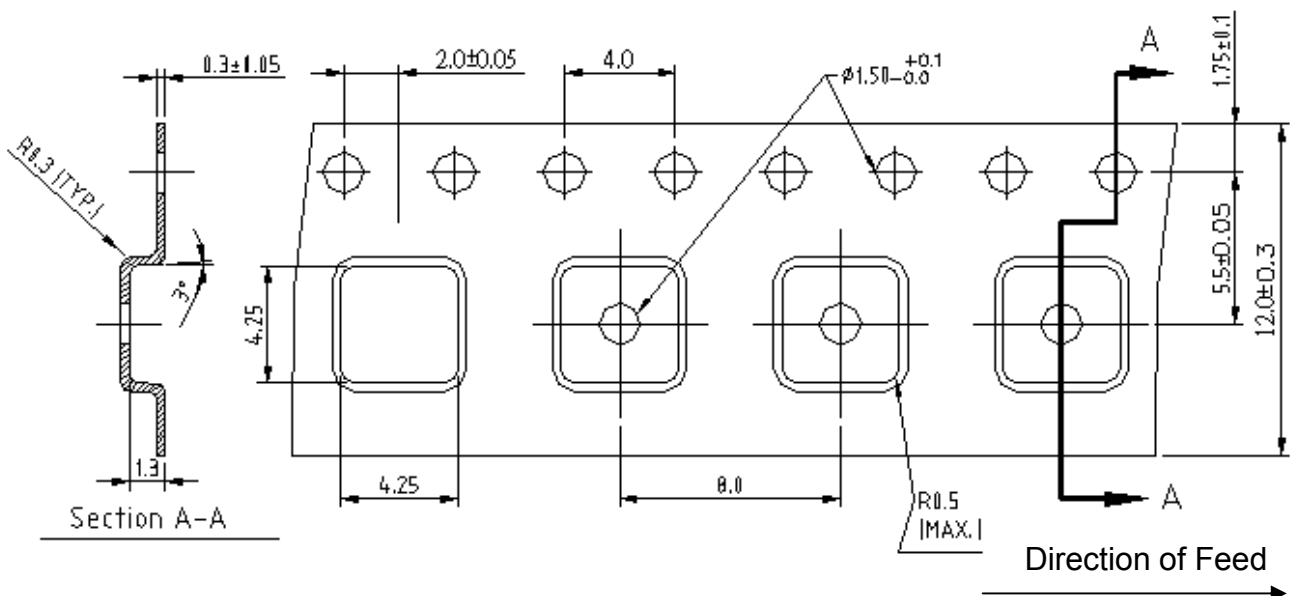
**G. PACKING:**

1. Reel Dimension

(Reel Count: 7" = 1000; 13" = 3000)



2. Tape Dimension



**SAW Filter 1090.0MHz**  
**Part No: MA09528**

**Model: TA0691A**  
**Rev No: 2**

**H. RECOMMENDED REFLOW PROFILE:**

