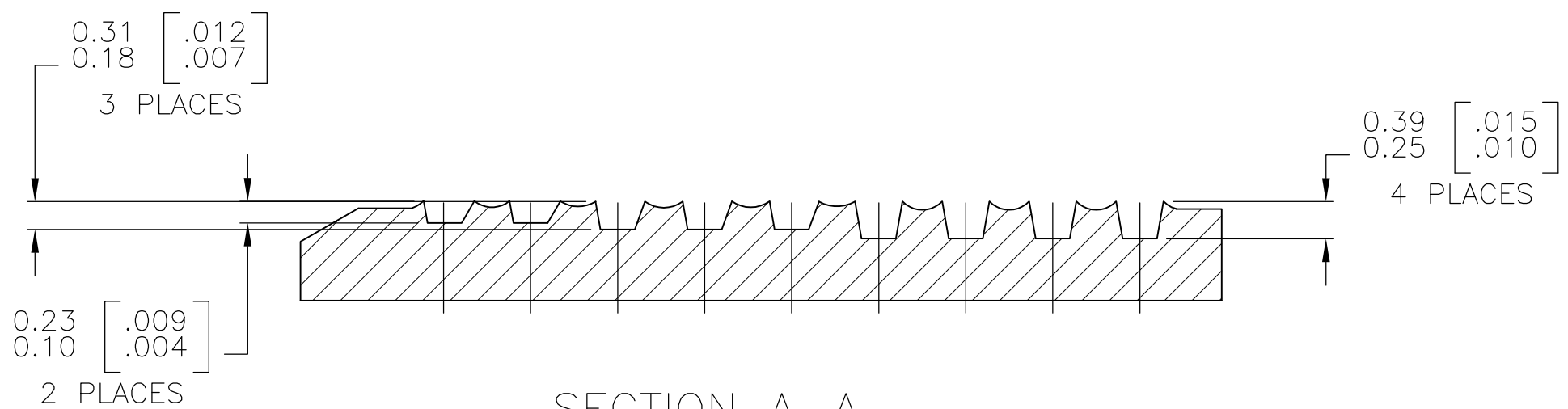
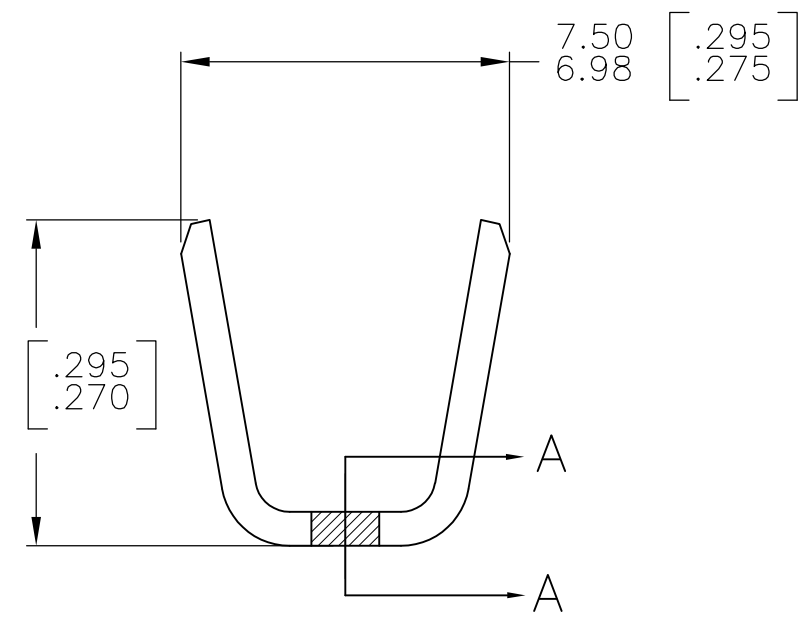
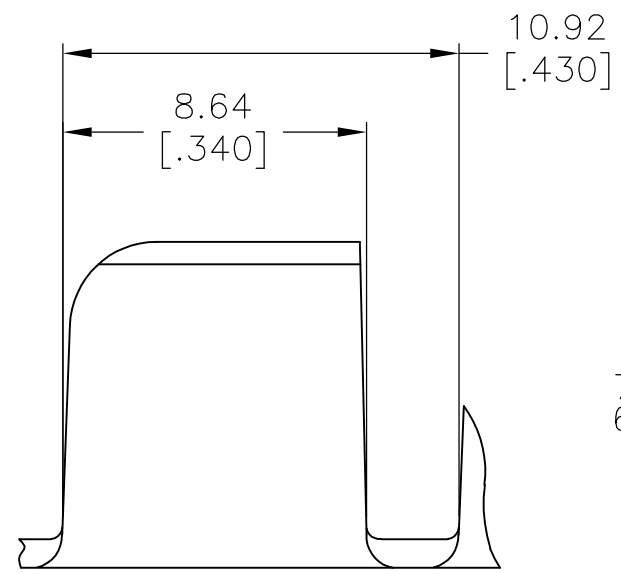
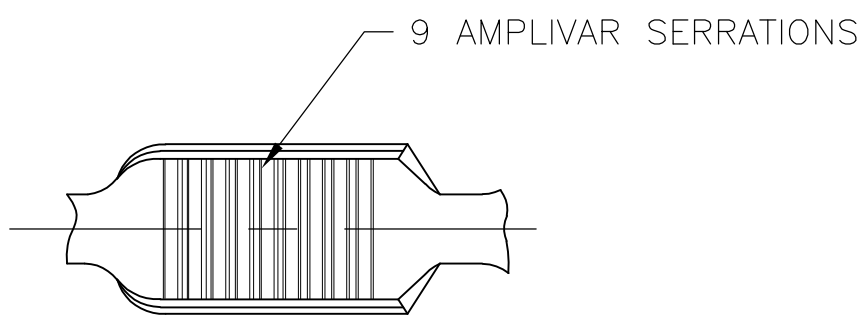


THIS DRAWING IS UNPUBLISHED. RELEASED FOR PUBLICATION
 © COPYRIGHT - By - ALL RIGHTS RESERVED.

LOC	DIST	REVISIONS			
P	LTR	DESCRIPTION	DATE	DWN	APVD
AF	50	E3	REVISED PER ECR-15-007136	15MAY2015	GRZ JL



SECTION A-A
SCALE 20:1

- CONTINUOUS STRIP ON REELS.
 - DIMENSIONS IN BRACKETS ARE IN INCHES.
 - WIRE RANGE: 10000-17000 CMA.
 - CRIMP WIDTH: .250 F TYPE WITH CURVED ANVIL
 CRIMP HEIGHT (±.003) = (TOTAL CMA + 34,100) / 428,500
 CRIMP WIDTH: .250 F TYPE WITH FLAT ANVIL
 CRIMP HEIGHT (±.003) = (TOTAL CMA + 30,575) / 431,650
 CRIMP WIDTH: .270 F TYPE WITH CURVED OR FLAT ANVIL
 CRIMP HEIGHT (±.003) = (TOTAL CMA + 35,000) / 480,000
- GENERAL APPLICATION GUIDELINES MUST BE FOLLOWED AS SPECIFIED IN CATALOG #82221
 FOR APPLICATOR INFORMATION CALL: 1-800-722-1111
 FOR PRODUCT INFORMATION CALL: 1-800-522-6752

62311-2
PART NO

THIS DRAWING IS A CONTROLLED DOCUMENT.		DWN RAGHAVENDRA 13NOV06	STE TE Connectivity	
DIMENSIONS: mm [INCHES]		CHK G.D.PORTA		
TOLERANCES UNLESS OTHERWISE SPECIFIED:		APVD G.D.PORTA	NAME	
0 PLC ± -		PRODUCT SPEC	SPLICE, AMPLIVAR	
1 PLC ± -		APPLICATION SPEC	RESTRICTED TO	
2 PLC ± -		WEIGHT -	SIZE A3	CAGE CODE 00779
3 PLC ± 0.38 [.015]		FINISH TIN PLATE	DRAWING NO C-62311	SCALE 6:1
4 PLC ± -			CUSTOMER DRAWING	SHEET 1 OF 1
MATERIAL REF 0.76±0.05 [.030±.002] BRASS				