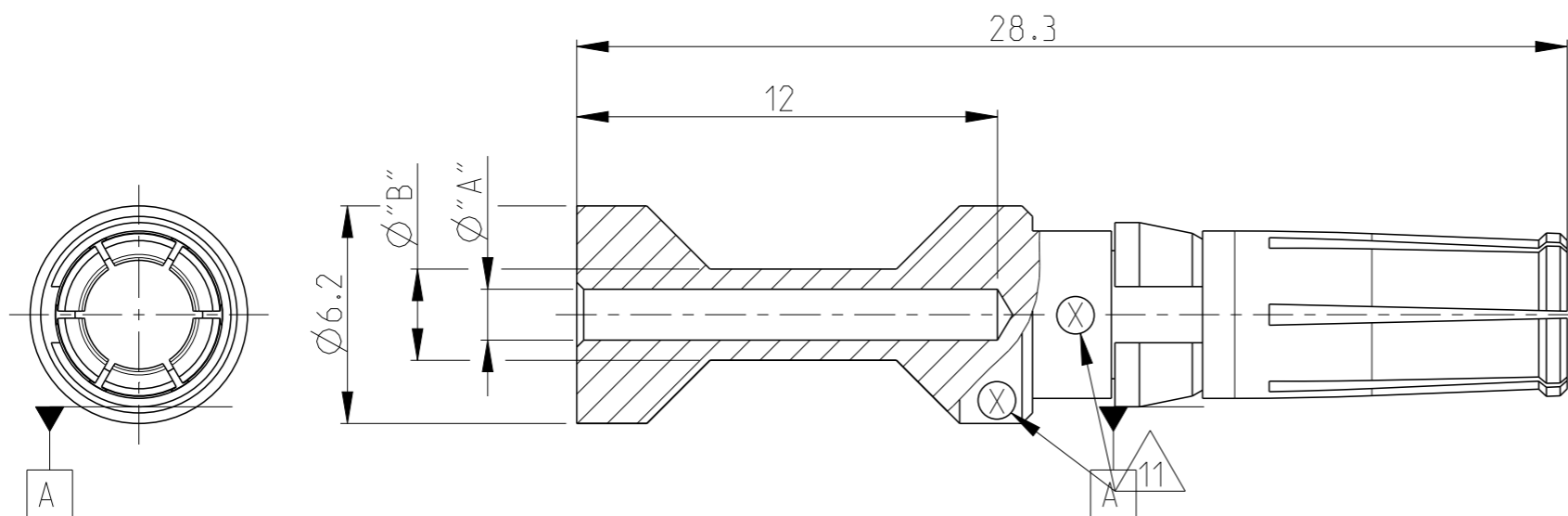


P	LTR	DESCRIPTION	DATE	DWN	APVD
A2		PN3-2; 5-2; 6-2 OBSOLETE	Eg00-1426-03	15.05.03	SR SM
A3		ECR-09-005436		11MAR2010	VG MH
A4		ECR-16-016696		18AUG2017	GCM MKO
A5		REVISED PER ECR-17-014011		18JAN2018	SRG MKO



Notes

- 1 MATERIAL: BRASS
- 2 FINISH SILVER PLATING: 2 μm Ag MIN. OVER Cu
- 3 FINISH GOLD PLATING: 0.75 μm Au MIN. OVER Ni
- 4 NO VENTILATION HOLE REQUIRED AT CROSS-SECTION >4.0 MM<sup>2</sup>
- 5 WEIGHT: 2.8 g, VOLUME: 324mm<sup>3</sup> (APPROX.)
- 6 SUITABLE PIN CONTACT: CUSTOMER DRAWING 1105251
- 7 SUITABLE INSERTS: SERIES HSM, CUSTOMER DRAWING
- 8 SUITABLE CRIMP TOOL: PN 1-1105850-8
- 9 SUITABLE INSERTION TOOL: PN 0-1102855-6
- 10 SUITABLE EXTRACTION TOOL: PN 0-1102855-4
- 11 CROSS-SECTION MARKING
- 12 STANDARDS: DIN EN 61984, DIN EN 60664-1

ORDERING TEXT	PLATING	CROSS SECTION	DIMENSIONS	CROSS-SECTION MARKINGS	STRIPPING-LENGTH		
OBSOLETE	GOLD 3	HSM.Bu.C.Au 10.0mm <sup>2</sup>	10	4.35	5.9	8	12
OBSOLETE		HSM.Bu.C.Au 6.0mm <sup>2</sup>	6.0	3.5	4.9	7	12
OBSOLETE		HSM.Bu.C.Au 4.0mm <sup>2</sup>	4.0	2.85	3.9	6	12
OBSOLETE		HSM.Bu.C.Au 2.5mm <sup>2</sup>	2.5	2.2	3.2	5	12
OBSOLETE		HSM.Bu.C.Au 1.5mm <sup>2</sup>	1.5	1.8	3.0	4	12
OBSOLETE		HSM.Bu.C.Au 0.75mm <sup>2</sup>	0.75-1.0	1.45	2.6	3	12
		SILBER 2	HSM.Bu.C.Ag 10.0mm <sup>2</sup>	10	4.35	5.9	8
	HSM.Bu.C.Ag 6.0mm <sup>2</sup>		6.0	3.5	4.9	7	12
	HSM.Bu.C.Ag 4.0mm <sup>2</sup>		4.0	2.85	3.9	6	12
	HSM.Bu.C.Ag 2.5mm <sup>2</sup>		2.5	2.2	3.2	5	12
OBSOLETE		HSM.Bu.C.Ag 1.5mm <sup>2</sup>	1.5	1.8	3.0	4	12
		HSM.Bu.C.Ag 0.75mm <sup>2</sup>	0.75-1.0	1.45	2.6	3	12
		[MM <sup>2</sup> ]	"A"	"B"	CROSS-SECTION MARKINGS	[mm]	

PARTS LIST

THIS DRAWING IS A CONTROLLED DOCUMENT.

DWN: K.SCHROEDER 03APR2008  
 CHK: H.BRAUN 03APR2008  
 APVD: T.SCHNURPFIL 03APR2008

TE Connectivity

NAME: SOCKET CONTACT SERIES HSM

PRODUCT SPEC

APPLICATION SPEC

WEIGHT

CUSTOMER DRAWING

SCALE: 5:1

SHEET 1 OF 1

REV: A5

SIZE: A3

CAGE CODE: 00779

DRAWING NO: 1105251

RESTRICTED TO:

