

**Würth Electronics Midcom Inc.**  
 121 Airport Drive · P.O. Box 1330 · Watertown SD  
 57201-6330, USA  
 T: +1 (605) 886 4385 · Toll Free: +1 (800) 643 2661  
 www.we-online.com



## PRODUCT NOTIFICATION

<b>Date:</b>	6/2/15		
<b>Customer Part Number:</b>	732-1648-ND	<b>Würth Electronics Midcom Part Number:</b>	<b>MIC24121-5308W-LF3/ 7498011122</b>
<b>Customer Name:</b>		<b>Würth Electronics Midcom Engineer:</b>	SL Chen
<b>Customer Contact:</b>		<input type="checkbox"/> Contract Manufacturer	

- Product / Process Change       Product Termination (no response required)  
 Internal Update

<b>Description and Purpose of Change(s):</b>	<input type="checkbox"/> Major	<input checked="" type="checkbox"/> Minor
1) In order to increase the production capability Würth Electronics Midcom will implement a transfer of production. 2) To improve the processability, the marking will be changed from ink marking to LASER marking. Therefore the WE logo will be changed to letters WE. 3) For internal standardization, Würth Electronics Midcom will mark the part with the global part number (749xxx) instead of the old Midcom part number (MICxxx). 4) In order to enhance the product reliability, Würth Electronics Midcom will change the LEDs used on the parts.		

<b>Impact on Form, Fit, Function, Quality or Reliability:</b>
There will be no impact on Quality or Reliability. There is a minor change to the LEDs as shown below. We use the same control plan and manufacturing techniques for this product at both manufacturing facilities

Select one action below and return completed/signed form within 90 days. Failure to do so authorizes Würth Electronics Midcom to proceed immediately with the change.

- Proposed changes accepted, proceed immediately.  
 Samples required. You have 90 days from receipt of this form to evaluate samples and accept/reject changes. If no response received within 90 days, changes will be implemented automatically.  
 Proposed changes accepted, new product can be shipped 90 days after origination date of this form.  
 Proposed changes rejected.

Signature: \_\_\_\_\_ Date: \_\_\_\_\_

The following order(s) are on hold and will not proceed until your approval is received.

Part Number	Sales Order #	Purchase Order #	Quantity	Ship Date

**Würth Electronics Midcom Inc.**  
 121 Airport Drive · P.O. Box 1330 · Watertown SD  
 57201-6330, USA  
 T: +1 (605) 886 4385 · Toll Free: +1 (800) 643 2661  
 www.we-online.com



## PRODUCT NOTIFICATION

<b>Date:</b>	6/2/15		
<b>Customer Part Number:</b>	732-1860-ND	<b>Würth Electronics Midcom Part Number:</b>	74990111215
<b>Customer Name:</b>		<b>Würth Electronics Midcom Engineer:</b>	SL Chen
<b>Customer Contact:</b>		<input type="checkbox"/> Contract Manufacturer	

- Product / Process Change     
  Product Termination (no response required)  
 Internal Update

<b>Description and Purpose of Change(s):</b>	<input type="checkbox"/> Major	<input checked="" type="checkbox"/> Minor
1) In order to increase the production capability Würth Electronics Midcom will implement a transfer of production. 2) To improve the processability, the marking will be changed from ink marking to LASER marking. Therefore the WE logo will be changed to letters WE. 3) For internal standardization, Würth Electronics Midcom will mark the part with the global part number (749xxx) instead of the old Midcom part number (MICxxx). 4) In order to enhance the product reliability, Würth Electronics Midcom will change the LEDs used on the parts.		

<b>Impact on Form, Fit, Function, Quality or Reliability:</b>
There will be no impact on Quality or Reliability. There is a minor change to the LEDs as shown below. We use the same control plan and manufacturing techniques for this product at both manufacturing facilities

Select one action below and return completed/signed form within 90 days. Failure to do so authorizes Würth Electronics Midcom to proceed immediately with the change.

- Proposed changes accepted, proceed immediately.  
 Samples required. You have 90 days from receipt of this form to evaluate samples and accept/reject changes. If no response received within 90 days, changes will be implemented automatically.  
 Proposed changes accepted, new product can be shipped 90 days after origination date of this form.  
 Proposed changes rejected.

Signature: \_\_\_\_\_ Date: \_\_\_\_\_

The following order(s) are on hold and will not proceed until your approval is received.

Part Number	Sales Order #	Purchase Order #	Quantity	Ship Date

1) Production site is marked in the Lotnumber which will change from 223 xx  
xxx xxxx xxx to 260 xx xxx xxxx xxx.

2) Old marking:

New marking:



The new LEDs will have a round form at the LED head, while the head of the old LEDs is flattened. Optical differences for switched on LEDs are small (see wavelengths at pictures below) and have no impact on the general function of the RJ45 connector.

**OLD:**



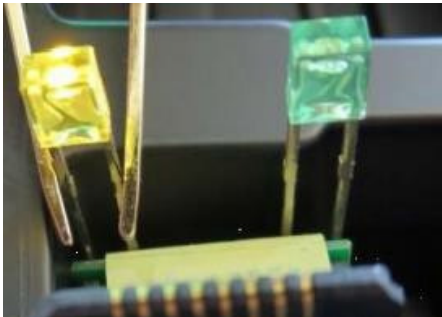
Wavelength typ. 568 nm

**NEW:**



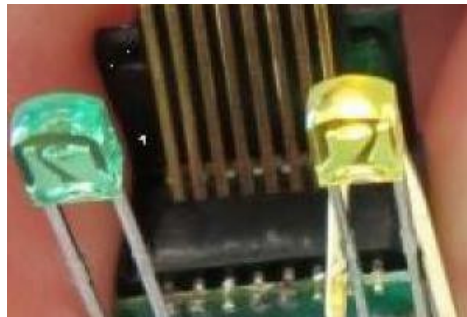
Wavelength typ. 570 nm

**OLD:**



Wavelength typ. 588 nm

**NEW:**



Wavelength typ. 589 nm

**RELIABILITY / QUALIFICATION SUMMARY:**

Product approval is according to reliability requirements and is internally released by Quality and Product Management Departments.

**DATA SHEET CHANGE:**

Yes

No

**Würth Electronics Midcom Inc.**  
 121 Airport Drive · P.O. Box 1330 · Watertown SD  
 57201-6330, USA  
 T: +1 (605) 886 4385 · Toll Free: +1 (800) 643 2661  
 www.we-online.com



## PRODUCT NOTIFICATION

<b>Date:</b>	6/2/15		
<b>Customer Part Number:</b>	1297-1066-ND	<b>Würth Electronics Midcom Part Number:</b>	7499511610
<b>Customer Name:</b>		<b>Würth Electronics Midcom Engineer:</b>	SL Chen
<b>Customer Contact:</b>		<input type="checkbox"/> Contract Manufacturer	

- Product / Process Change     
  Product Termination (no response required)  
 Internal Update

<b>Description and Purpose of Change(s):</b>	<input type="checkbox"/> Major	<input checked="" type="checkbox"/> Minor
1) In order to increase the production capability Würth Electronics Midcom will implement a transfer of production. 2) To improve the processability, the marking will be changed from ink marking to LASER marking. Therefore the WE logo will be changed to letters WE. 3) For internal standardization, Würth Electronics Midcom will mark the part with the global part number (749xxx) instead of the old Midcom part number (MICxxx). 4) In order to enhance the product reliability, Würth Electronics Midcom will change the LEDs used on the parts.		

<b>Impact on Form, Fit, Function, Quality or Reliability:</b>
There will be no impact on Quality or Reliability. There is a minor change to the LEDs as shown below. We use the same control plan and manufacturing techniques for this product at both manufacturing facilities

Select one action below and return completed/signed form within 90 days. Failure to do so authorizes Würth Electronics Midcom to proceed immediately with the change.

- Proposed changes accepted, proceed immediately.  
 Samples required. You have 90 days from receipt of this form to evaluate samples and accept/reject changes. If no response received within 90 days, changes will be implemented automatically.  
 Proposed changes accepted, new product can be shipped 90 days after origination date of this form.  
 Proposed changes rejected.

Signature: \_\_\_\_\_ Date: \_\_\_\_\_

The following order(s) are on hold and will not proceed until your approval is received.

Part Number	Sales Order #	Purchase Order #	Quantity	Ship Date

1) Production site is marked in the Lotnumber which will change from 223 xx  
xxx xxxx xxx to 260 xx xxx xxxx xxx.

2) Old marking:

New marking:



The new LEDs will have a round form at the LED head, while the head of the old LEDs is flattened. Optical differences for switched on LEDs are small (see wavelengths at pictures below) and have no impact on the general function of the RJ45 connector.

**OLD:**



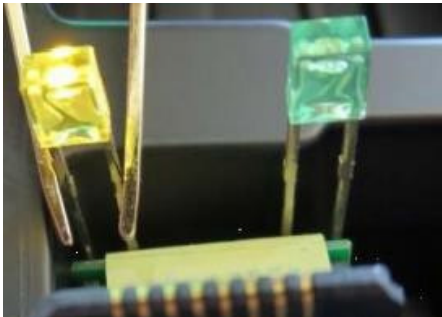
Wavelength typ. 568 nm

**NEW:**



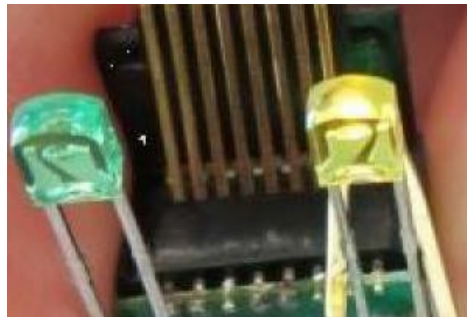
Wavelength typ. 570 nm

**OLD:**



Wavelength typ. 588 nm

**NEW:**



Wavelength typ. 589 nm

**RELIABILITY / QUALIFICATION SUMMARY:**

Product approval is according to reliability requirements and is internally released by Quality and Product Management Departments.

**DATA SHEET CHANGE:**

Yes

No



**Würth Electronics Midcom Inc.**  
 121 Airport Drive · P.O. Box 1330 · Watertown SD  
 57201-6330, USA  
 T: +1 (605) 886 4385 · Toll Free: +1 (800) 643 2661  
 www.we-online.com



## PRODUCT NOTIFICATION

<b>Date:</b>	6/2/15		
<b>Customer Part Number:</b>	732-1864-ND	<b>Würth Electronics Midcom Part Number:</b>	7499411122
<b>Customer Name:</b>		<b>Würth Electronics Midcom Engineer:</b>	SL Chen
<b>Customer Contact:</b>		<input type="checkbox"/> Contract Manufacturer	

- Product / Process Change     
  Product Termination (no response required)  
 Internal Update

<b>Description and Purpose of Change(s):</b>	<input type="checkbox"/> Major	<input checked="" type="checkbox"/> Minor
1) In order to increase the production capability Würth Electronics Midcom will implement a transfer of production. 2) To improve the processability, the marking will be changed from ink marking to LASER marking. Therefore the WE logo will be changed to letters WE. 3) For internal standardization, Würth Electronics Midcom will mark the part with the global part number (749xxx) instead of the old Midcom part number (MICxxx). 4) In order to enhance the product reliability, Würth Electronics Midcom will change the LEDs used on the parts.		

<b>Impact on Form, Fit, Function, Quality or Reliability:</b>
There will be no impact on Quality or Reliability. There is a minor change to the LEDs as shown below. We use the same control plan and manufacturing techniques for this product at both manufacturing facilities

Select one action below and return completed/signed form within 90 days. Failure to do so authorizes Würth Electronics Midcom to proceed immediately with the change.

- Proposed changes accepted, proceed immediately.  
 Samples required. You have 90 days from receipt of this form to evaluate samples and accept/reject changes. If no response received within 90 days, changes will be implemented automatically.  
 Proposed changes accepted, new product can be shipped 90 days after origination date of this form.  
 Proposed changes rejected.

Signature: \_\_\_\_\_ Date: \_\_\_\_\_

The following order(s) are on hold and will not proceed until your approval is received.

Part Number	Sales Order #	Purchase Order #	Quantity	Ship Date



1) Production site is marked in the Lotnumber which will change from 223 xx  
xxx xxxx xxx to 260 xx xxx xxxx xxx.

2) Old marking:

New marking:



The new LEDs will have a round form at the LED head, while the head of the old LEDs is flattened. Optical differences for switched on LEDs are small (see wavelengths at pictures below) and have no impact on the general function of the RJ45 connector.

**OLD:**



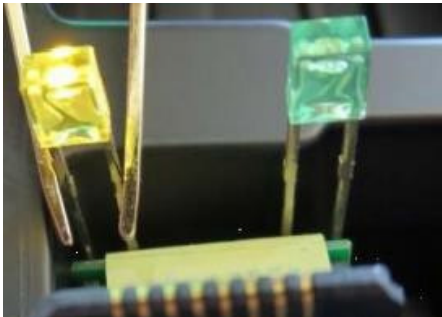
Wavelength typ. 568 nm

**NEW:**



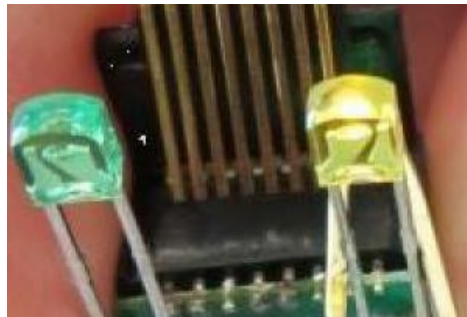
Wavelength typ. 570 nm

**OLD:**



Wavelength typ. 588 nm

**NEW:**



Wavelength typ. 589 nm

**RELIABILITY / QUALIFICATION SUMMARY:**

Product approval is according to reliability requirements and is internally released by Quality and Product Management Departments.

**DATA SHEET CHANGE:**

Yes

No

**Würth Electronics Midcom Inc.**  
 121 Airport Drive · P.O. Box 1330 · Watertown SD  
 57201-6330, USA  
 T: +1 (605) 886 4385 · Toll Free: +1 (800) 643 2661  
 www.we-online.com



## PRODUCT NOTIFICATION

<b>Date:</b>	6/2/15		
<b>Customer Part Number:</b>	732-1868-ND	<b>Würth Electronics Midcom Part Number:</b>	7499311611
<b>Customer Name:</b>		<b>Würth Electronics Midcom Engineer:</b>	SL Chen
<b>Customer Contact:</b>		<input type="checkbox"/> Contract Manufacturer	

- Product / Process Change     
  Product Termination (no response required)  
 Internal Update

<b>Description and Purpose of Change(s):</b>	<input type="checkbox"/> Major	<input checked="" type="checkbox"/> Minor
1) In order to increase the production capability Würth Electronics Midcom will implement a transfer of production. 2) To improve the processability, the marking will be changed from ink marking to LASER marking. Therefore the WE logo will be changed to letters WE. 3) For internal standardization, Würth Electronics Midcom will mark the part with the global part number (749xxx) instead of the old Midcom part number (MICxxx). 4) In order to enhance the product reliability, Würth Electronics Midcom will change the LEDs used on the parts.		

<b>Impact on Form, Fit, Function, Quality or Reliability:</b>
There will be no impact on Quality or Reliability. There is a minor change to the LEDs as shown below. We use the same control plan and manufacturing techniques for this product at both manufacturing facilities

Select one action below and return completed/signed form within 90 days. Failure to do so authorizes Würth Electronics Midcom to proceed immediately with the change.

- Proposed changes accepted, proceed immediately.  
 Samples required. You have 90 days from receipt of this form to evaluate samples and accept/reject changes. If no response received within 90 days, changes will be implemented automatically.  
 Proposed changes accepted, new product can be shipped 90 days after origination date of this form.  
 Proposed changes rejected.

Signature: \_\_\_\_\_ Date: \_\_\_\_\_

The following order(s) are on hold and will not proceed until your approval is received.

Part Number	Sales Order #	Purchase Order #	Quantity	Ship Date

1) Production site is marked in the Lotnumber which will change from 223 xx  
xxx xxxx xxx to 260 xx xxx xxxx xxx.

2) Old marking:

New marking:



The new LEDs will have a round form at the LED head, while the head of the old LEDs is flattened. Optical differences for switched on LEDs are small (see wavelengths at pictures below) and have no impact on the general function of the RJ45 connector.

**OLD:**



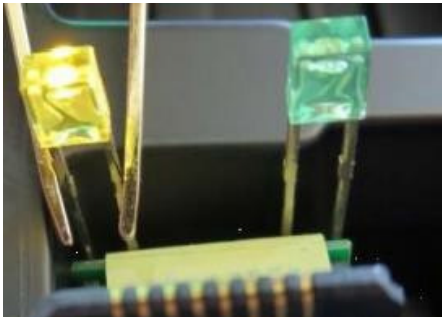
Wavelength typ. 568 nm

**NEW:**



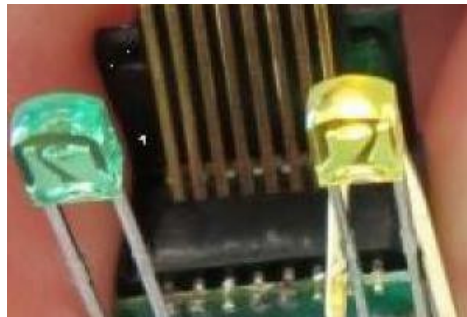
Wavelength typ. 570 nm

**OLD:**



Wavelength typ. 588 nm

**NEW:**



Wavelength typ. 589 nm

**RELIABILITY / QUALIFICATION SUMMARY:**

Product approval is according to reliability requirements and is internally released by Quality and Product Management Departments.

**DATA SHEET CHANGE:**

Yes

No

**Würth Electronics Midcom Inc.**  
 121 Airport Drive · P.O. Box 1330 · Watertown SD  
 57201-6330, USA  
 T: +1 (605) 886 4385 · Toll Free: +1 (800) 643 2661  
 www.we-online.com



## PRODUCT NOTIFICATION

<b>Date:</b>	6/2/15		
<b>Customer Part Number:</b>	732-1862-ND	<b>Würth Electronics Midcom Part Number:</b>	7499211123
<b>Customer Name:</b>		<b>Würth Electronics Midcom Engineer:</b>	SL Chen
<b>Customer Contact:</b>		<input type="checkbox"/> Contract Manufacturer	

- Product / Process Change     
  Product Termination (no response required)  
 Internal Update

<b>Description and Purpose of Change(s):</b>	<input type="checkbox"/> Major	<input checked="" type="checkbox"/> Minor
1) In order to increase the production capability Würth Electronics Midcom will implement a transfer of production. 2) To improve the processability, the marking will be changed from ink marking to LASER marking. Therefore the WE logo will be changed to letters WE. 3) For internal standardization, Würth Electronics Midcom will mark the part with the global part number (749xxx) instead of the old Midcom part number (MICxxx). 4) In order to enhance the product reliability, Würth Electronics Midcom will change the LEDs used on the parts.		

<b>Impact on Form, Fit, Function, Quality or Reliability:</b>
There will be no impact on Quality or Reliability. There is a minor change to the LEDs as shown below. We use the same control plan and manufacturing techniques for this product at both manufacturing facilities

Select one action below and return completed/signed form within 90 days. Failure to do so authorizes Würth Electronics Midcom to proceed immediately with the change.

- Proposed changes accepted, proceed immediately.  
 Samples required. You have 90 days from receipt of this form to evaluate samples and accept/reject changes. If no response received within 90 days, changes will be implemented automatically.  
 Proposed changes accepted, new product can be shipped 90 days after origination date of this form.  
 Proposed changes rejected.

Signature: \_\_\_\_\_ Date: \_\_\_\_\_

The following order(s) are on hold and will not proceed until your approval is received.

Part Number	Sales Order #	Purchase Order #	Quantity	Ship Date



1) Production site is marked in the Lotnumber which will change from 223 xx  
xxx xxxx xxx to 260 xx xxx xxxx xxx.

2) Old marking:

New marking:





The new LEDs will have a round form at the LED head, while the head of the old LEDs is flattened. Optical differences for switched on LEDs are small (see wavelengths at pictures below) and have no impact on the general function of the RJ45 connector.

**OLD:**



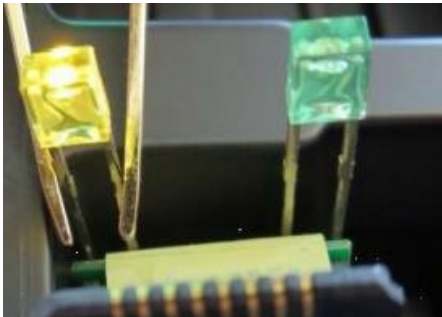
Wavelength typ. 568 nm

**NEW:**



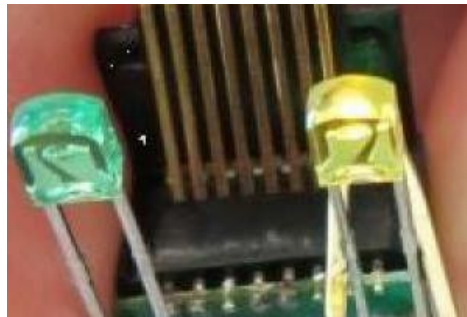
Wavelength typ. 570 nm

**OLD:**



Wavelength typ. 588 nm

**NEW:**



Wavelength typ. 589 nm

**RELIABILITY / QUALIFICATION SUMMARY:**

Product approval is according to reliability requirements and is internally released by Quality and Product Management Departments.

**DATA SHEET CHANGE:**

Yes

No

**Würth Electronics Midcom Inc.**  
 121 Airport Drive · P.O. Box 1330 · Watertown SD  
 57201-6330, USA  
 T: +1 (605) 886 4385 · Toll Free: +1 (800) 643 2661  
 www.we-online.com



## PRODUCT NOTIFICATION

<b>Date:</b>	6/2/15		
<b>Customer Part Number:</b>	7499210124-NDL	<b>Würth Electronics Midcom Part Number:</b>	MIC66311-0171T-LF3/ 7499210124
<b>Customer Name:</b>		<b>Würth Electronics Midcom Engineer:</b>	SL Chen
<b>Customer Contact:</b>		<input type="checkbox"/> Contract Manufacturer	

- Product / Process Change       Product Termination (no response required)  
 Internal Update

<b>Description and Purpose of Change(s):</b>	<input type="checkbox"/> Major	<input checked="" type="checkbox"/> Minor
1) In order to increase the production capability Würth Electronics Midcom will implement a transfer of production. 2) To improve the processability, the marking will be changed from ink marking to LASER marking. Therefore the WE logo will be changed to letters WE. 3) For internal standardization, Würth Electronics Midcom will mark the part with the global part number (749xxx) instead of the old Midcom part number (MICxxx). 4) In order to enhance the product reliability, Würth Electronics Midcom will change the LEDs used on the parts.		

**Impact on Form, Fit, Function, Quality or Reliability:**

There will be no impact on Quality or Reliability. There is a minor change to the LEDs as shown below. We use the same control plan and manufacturing techniques for this product at both manufacturing facilities

Select one action below and return completed/signed form within 90 days. Failure to do so authorizes Würth Electronics Midcom to proceed immediately with the change.

- Proposed changes accepted, proceed immediately.  
 Samples required. You have 90 days from receipt of this form to evaluate samples and accept/reject changes. If no response received within 90 days, changes will be implemented automatically.  
 Proposed changes accepted, new product can be shipped 90 days after origination date of this form.  
 Proposed changes rejected.

Signature: \_\_\_\_\_ Date: \_\_\_\_\_

The following order(s) are on hold and will not proceed until your approval is received.

Part Number	Sales Order #	Purchase Order #	Quantity	Ship Date

1) Production site is marked in the Lotnumber which will change from 223 xx  
xxx xxxx xxx to 260 xx xxx xxxx xxx.

2) Old marking:

New marking:



The new LEDs will have a round form at the LED head, while the head of the old LEDs is flattened. Optical differences for switched on LEDs are small (see wavelengths at pictures below) and have no impact on the general function of the RJ45 connector.

**OLD:**



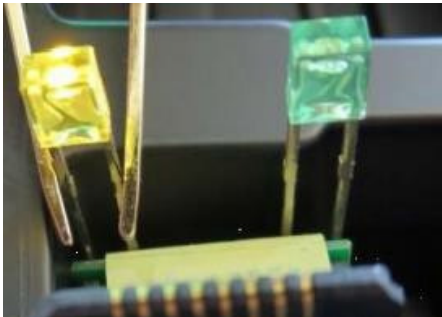
Wavelength typ. 568 nm

**NEW:**



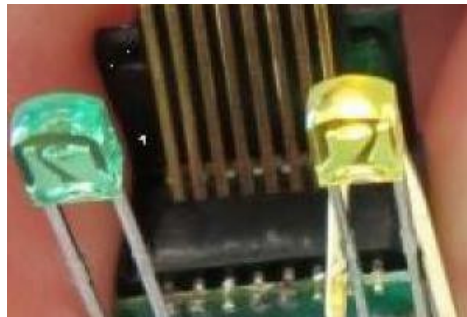
Wavelength typ. 570 nm

**OLD:**



Wavelength typ. 588 nm

**NEW:**



Wavelength typ. 589 nm

**RELIABILITY / QUALIFICATION SUMMARY:**

Product approval is according to reliability requirements and is internally released by Quality and Product Management Departments.

**DATA SHEET CHANGE:**

Yes

No

**Würth Electronics Midcom Inc.**  
 121 Airport Drive · P.O. Box 1330 · Watertown SD  
 57201-6330, USA  
 T: +1 (605) 886 4385 · Toll Free: +1 (800) 643 2661  
 www.we-online.com



## PRODUCT NOTIFICATION

<b>Date:</b>	6/2/15		
<b>Customer Part Number:</b>	732-4962-ND	<b>Würth Electronics Midcom Part Number:</b>	<b>MIC66611-5171T-LF3/ 7499210123</b>
<b>Customer Name:</b>		<b>Würth Electronics Midcom Engineer:</b>	SL Chen
<b>Customer Contact:</b>		<input type="checkbox"/> Contract Manufacturer	

- Product / Process Change       Product Termination (no response required)  
 Internal Update

<b>Description and Purpose of Change(s):</b>	<input type="checkbox"/> Major	<input checked="" type="checkbox"/> Minor
1) In order to increase the production capability Würth Electronics Midcom will implement a transfer of production. 2) To improve the processability, the marking will be changed from ink marking to LASER marking. Therefore the WE logo will be changed to letters WE. 3) For internal standardization, Würth Electronics Midcom will mark the part with the global part number (749xxx) instead of the old Midcom part number (MICxxx). 4) In order to enhance the product reliability, Würth Electronics Midcom will change the LEDs used on the parts.		

<b>Impact on Form, Fit, Function, Quality or Reliability:</b>
There will be no impact on Quality or Reliability. There is a minor change to the LEDs as shown below. We use the same control plan and manufacturing techniques for this product at both manufacturing facilities

Select one action below and return completed/signed form within 90 days. Failure to do so authorizes Würth Electronics Midcom to proceed immediately with the change.

- Proposed changes accepted, proceed immediately.  
 Samples required. You have 90 days from receipt of this form to evaluate samples and accept/reject changes. If no response received within 90 days, changes will be implemented automatically.  
 Proposed changes accepted, new product can be shipped 90 days after origination date of this form.  
 Proposed changes rejected.

Signature: \_\_\_\_\_ Date: \_\_\_\_\_

The following order(s) are on hold and will not proceed until your approval is received.

Part Number	Sales Order #	Purchase Order #	Quantity	Ship Date

1) Production site is marked in the Lotnumber which will change from 223 xx  
xxx xxxx xxx to 260 xx xxx xxxx xxx.

2) Old marking:

New marking:





The new LEDs will have a round form at the LED head, while the head of the old LEDs is flattened. Optical differences for switched on LEDs are small (see wavelengths at pictures below) and have no impact on the general function of the RJ45 connector.

**OLD:**



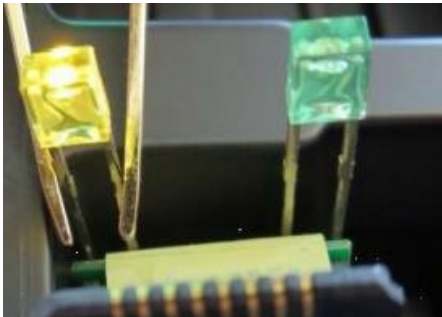
Wavelength typ. 568 nm

**NEW:**



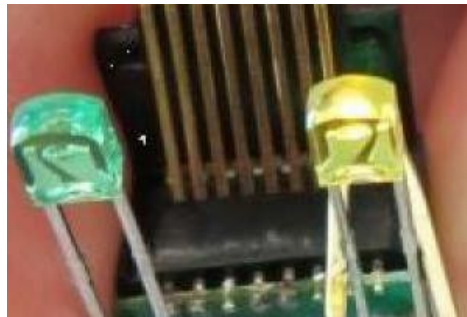
Wavelength typ. 570 nm

**OLD:**



Wavelength typ. 588 nm

**NEW:**



Wavelength typ. 589 nm

**RELIABILITY / QUALIFICATION SUMMARY:**

Product approval is according to reliability requirements and is internally released by Quality and Product Management Departments.

**DATA SHEET CHANGE:**

Yes

No



**Würth Electronics Midcom Inc.**  
 121 Airport Drive · P.O. Box 1330 · Watertown SD  
 57201-6330, USA  
 T: +1 (605) 886 4385 · Toll Free: +1 (800) 643 2661  
 www.we-online.com



## PRODUCT NOTIFICATION

<b>Date:</b>	6/2/15		
<b>Customer Part Number:</b>	7499210121-NDL	<b>Würth Electronics Midcom Part Number:</b>	<b>MIC66211-5171T-LF3/ 7499210121</b>
<b>Customer Name:</b>		<b>Würth Electronics Midcom Engineer:</b>	SL Chen
<b>Customer Contact:</b>		<input type="checkbox"/> Contract Manufacturer	

- Product / Process Change       Product Termination (no response required)  
 Internal Update

<b>Description and Purpose of Change(s):</b>	<input type="checkbox"/> Major	<input checked="" type="checkbox"/> Minor
1) In order to increase the production capability Würth Electronics Midcom will implement a transfer of production. 2) To improve the processability, the marking will be changed from ink marking to LASER marking. Therefore the WE logo will be changed to letters WE. 3) For internal standardization, Würth Electronics Midcom will mark the part with the global part number (749xxx) instead of the old Midcom part number (MICxxx). 4) In order to enhance the product reliability, Würth Electronics Midcom will change the LEDs used on the parts.		

<b>Impact on Form, Fit, Function, Quality or Reliability:</b>
There will be no impact on Quality or Reliability. There is a minor change to the LEDs as shown below. We use the same control plan and manufacturing techniques for this product at both manufacturing facilities

Select one action below and return completed/signed form within 90 days. Failure to do so authorizes Würth Electronics Midcom to proceed immediately with the change.

- Proposed changes accepted, proceed immediately.  
 Samples required. You have 90 days from receipt of this form to evaluate samples and accept/reject changes. If no response received within 90 days, changes will be implemented automatically.  
 Proposed changes accepted, new product can be shipped 90 days after origination date of this form.  
 Proposed changes rejected.

Signature: \_\_\_\_\_ Date: \_\_\_\_\_

The following order(s) are on hold and will not proceed until your approval is received.

Part Number	Sales Order #	Purchase Order #	Quantity	Ship Date

1) Production site is marked in the Lotnumber which will change from 223 xx  
xxx xxxx xxx to 260 xx xxx xxxx xxx.

2) Old marking:

New marking:



The new LEDs will have a round form at the LED head, while the head of the old LEDs is flattened. Optical differences for switched on LEDs are small (see wavelengths at pictures below) and have no impact on the general function of the RJ45 connector.

**OLD:**



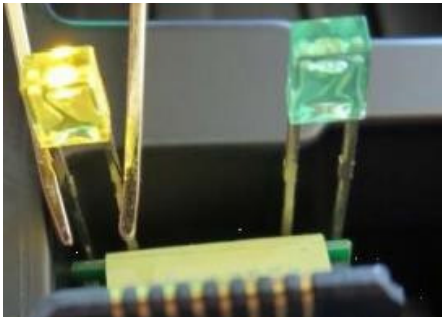
Wavelength typ. 568 nm

**NEW:**



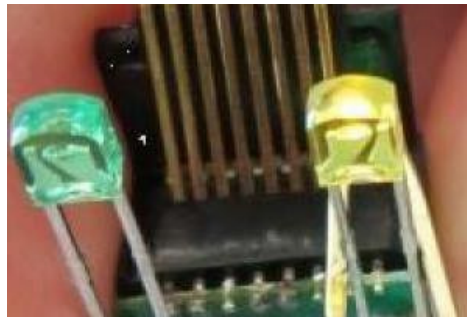
Wavelength typ. 570 nm

**OLD:**



Wavelength typ. 588 nm

**NEW:**



Wavelength typ. 589 nm

**RELIABILITY / QUALIFICATION SUMMARY:**

Product approval is according to reliability requirements and is internally released by Quality and Product Management Departments.

**DATA SHEET CHANGE:**

Yes

No

**Würth Electronics Midcom Inc.**  
 121 Airport Drive · P.O. Box 1330 · Watertown SD  
 57201-6330, USA  
 T: +1 (605) 886 4385 · Toll Free: +1 (800) 643 2661  
 www.we-online.com



## PRODUCT NOTIFICATION

<b>Date:</b>	6/2/15		
<b>Customer Part Number:</b>	732-1651-ND	<b>Würth Electronics Midcom Part Number:</b>	<b>MIC24611-5104T-LF3/ 7499010122</b>
<b>Customer Name:</b>		<b>Würth Electronics Midcom Engineer:</b>	SL Chen
<b>Customer Contact:</b>		<input type="checkbox"/> Contract Manufacturer	

- Product / Process Change       Product Termination (no response required)  
 Internal Update

<b>Description and Purpose of Change(s):</b>	<input type="checkbox"/> Major	<input checked="" type="checkbox"/> Minor
1) In order to increase the production capability Würth Electronics Midcom will implement a transfer of production. 2) To improve the processability, the marking will be changed from ink marking to LASER marking. Therefore the WE logo will be changed to letters WE. 3) For internal standardization, Würth Electronics Midcom will mark the part with the global part number (749xxx) instead of the old Midcom part number (MICxxx). 4) In order to enhance the product reliability, Würth Electronics Midcom will change the LEDs used on the parts.		

<b>Impact on Form, Fit, Function, Quality or Reliability:</b>
There will be no impact on Quality or Reliability. There is a minor change to the LEDs as shown below. We use the same control plan and manufacturing techniques for this product at both manufacturing facilities

Select one action below and return completed/signed form within 90 days. Failure to do so authorizes Würth Electronics Midcom to proceed immediately with the change.

- Proposed changes accepted, proceed immediately.  
 Samples required. You have 90 days from receipt of this form to evaluate samples and accept/reject changes. If no response received within 90 days, changes will be implemented automatically.  
 Proposed changes accepted, new product can be shipped 90 days after origination date of this form.  
 Proposed changes rejected.

Signature: \_\_\_\_\_ Date: \_\_\_\_\_

The following order(s) are on hold and will not proceed until your approval is received.

Part Number	Sales Order #	Purchase Order #	Quantity	Ship Date

1) Production site is marked in the Lotnumber which will change from 223 xx  
xxx xxxx xxx to 260 xx xxx xxxx xxx.

2) Old marking:

New marking:



The new LEDs will have a round form at the LED head, while the head of the old LEDs is flattened. Optical differences for switched on LEDs are small (see wavelengths at pictures below) and have no impact on the general function of the RJ45 connector.

**OLD:**



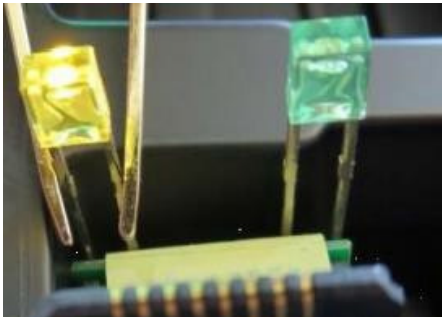
Wavelength typ. 568 nm

**NEW:**



Wavelength typ. 570 nm

**OLD:**



Wavelength typ. 588 nm

**NEW:**



Wavelength typ. 589 nm

**RELIABILITY / QUALIFICATION SUMMARY:**

Product approval is according to reliability requirements and is internally released by Quality and Product Management Departments.

**DATA SHEET CHANGE:**

Yes

No

**Würth Electronics Midcom Inc.**  
 121 Airport Drive · P.O. Box 1330 · Watertown SD  
 57201-6330, USA  
 T: +1 (605) 886 4385 · Toll Free: +1 (800) 643 2661  
 www.we-online.com



## PRODUCT NOTIFICATION

<b>Date:</b>	6/2/15		
<b>Customer Part Number:</b>	732-4502-2-ND	<b>Würth Electronics Midcom Part Number:</b>	<b>MIC38121-5356R-LF3/ 7498111120R</b>
<b>Customer Name:</b>		<b>Würth Electronics Midcom Engineer:</b>	SL Chen
<b>Customer Contact:</b>		<input type="checkbox"/> Contract Manufacturer	

- Product / Process Change     
  Product Termination (no response required)  
 Internal Update

<b>Description and Purpose of Change(s):</b>	<input type="checkbox"/> Major	<input checked="" type="checkbox"/> Minor
1) In order to increase the production capability Würth Electronics Midcom will implement a transfer of production. 2) To improve the processability, the marking will be changed from ink marking to LASER marking. Therefore the WE logo will be changed to letters WE. 3) For internal standardization, Würth Electronics Midcom will mark the part with the global part number (749xxx) instead of the old Midcom part number (MICxxx). 4) In order to enhance the product reliability, Würth Electronics Midcom will change the LEDs used on the parts.		

<b>Impact on Form, Fit, Function, Quality or Reliability:</b>
There will be no impact on Quality or Reliability. There is a minor change to the LEDs as shown below. We use the same control plan and manufacturing techniques for this product at both manufacturing facilities

Select one action below and return completed/signed form within 90 days. Failure to do so authorizes Würth Electronics Midcom to proceed immediately with the change.

- Proposed changes accepted, proceed immediately.  
 Samples required. You have 90 days from receipt of this form to evaluate samples and accept/reject changes. If no response received within 90 days, changes will be implemented automatically.  
 Proposed changes accepted, new product can be shipped 90 days after origination date of this form.  
 Proposed changes rejected.

Signature: \_\_\_\_\_ Date: \_\_\_\_\_

The following order(s) are on hold and will not proceed until your approval is received.

Part Number	Sales Order #	Purchase Order #	Quantity	Ship Date



1) Production site is marked in the Lotnumber which will change from 223 xx  
xxx xxxx xxx to 260 xx xxx xxxx xxx.

2) Old marking:

New marking:



The new LEDs will have a round form at the LED head, while the head of the old LEDs is flattened. Optical differences for switched on LEDs are small (see wavelengths at pictures below) and have no impact on the general function of the RJ45 connector.

**OLD:**



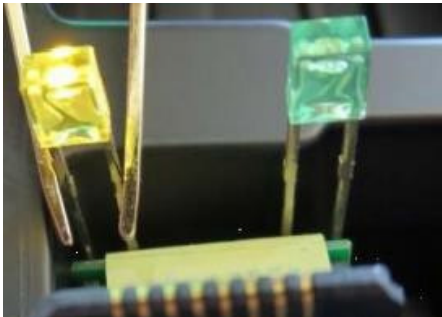
Wavelength typ. 568 nm

**NEW:**



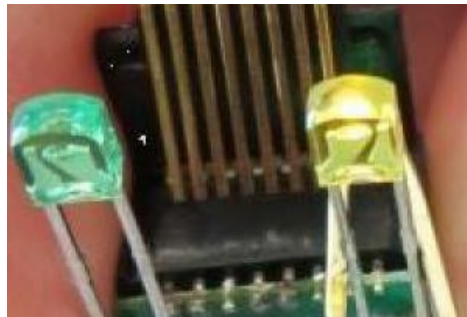
Wavelength typ. 570 nm

**OLD:**



Wavelength typ. 588 nm

**NEW:**



Wavelength typ. 589 nm

**RELIABILITY / QUALIFICATION SUMMARY:**

Product approval is according to reliability requirements and is internally released by Quality and Product Management Departments.

**DATA SHEET CHANGE:**

Yes

No

**Würth Electronics Midcom Inc.**  
 121 Airport Drive · P.O. Box 1330 · Watertown SD  
 57201-6330, USA  
 T: +1 (605) 886 4385 · Toll Free: +1 (800) 643 2661  
 www.we-online.com



## PRODUCT NOTIFICATION

<b>Date:</b>	6/2/15		
<b>Customer Part Number:</b>	732-4495-5-ND	<b>Würth Electronics Midcom Part Number:</b>	<b>MIC26023-5134W-LF3 7498011211</b>
<b>Customer Name:</b>		<b>Würth Electronics Midcom Engineer:</b>	SL Chen
<b>Customer Contact:</b>		<input type="checkbox"/> Contract Manufacturer	

- Product / Process Change       Product Termination (no response required)  
 Internal Update

<b>Description and Purpose of Change(s):</b>	<input type="checkbox"/> Major	<input checked="" type="checkbox"/> Minor
1) In order to increase the production capability Würth Electronics Midcom will implement a transfer of production. 2) To improve the processability, the marking will be changed from ink marking to LASER marking. Therefore the WE logo will be changed to letters WE. 3) For internal standardization, Würth Electronics Midcom will mark the part with the global part number (749xxx) instead of the old Midcom part number (MICxxx). 4) In order to enhance the product reliability, Würth Electronics Midcom will change the LEDs used on the parts.		

<b>Impact on Form, Fit, Function, Quality or Reliability:</b>
There will be no impact on Quality or Reliability. There is a minor change to the LEDs as shown below. We use the same control plan and manufacturing techniques for this product at both manufacturing facilities

Select one action below and return completed/signed form within 90 days. Failure to do so authorizes Würth Electronics Midcom to proceed immediately with the change.

- Proposed changes accepted, proceed immediately.  
 Samples required. You have 90 days from receipt of this form to evaluate samples and accept/reject changes. If no response received within 90 days, changes will be implemented automatically.  
 Proposed changes accepted, new product can be shipped 90 days after origination date of this form.  
 Proposed changes rejected.

Signature: \_\_\_\_\_ Date: \_\_\_\_\_

The following order(s) are on hold and will not proceed until your approval is received.

Part Number	Sales Order #	Purchase Order #	Quantity	Ship Date

1) Production site is marked in the Lotnumber which will change from 223 xx  
xxx xxxx xxx to 260 xx xxx xxxx xxx.

2) Old marking:

New marking:



The new LEDs will have a round form at the LED head, while the head of the old LEDs is flattened. Optical differences for switched on LEDs are small (see wavelengths at pictures below) and have no impact on the general function of the RJ45 connector.

**OLD:**



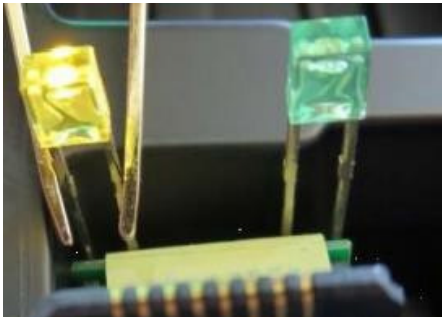
Wavelength typ. 568 nm

**NEW:**



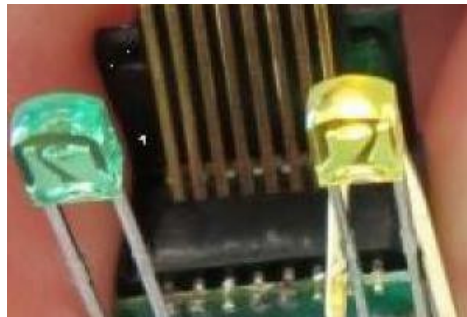
Wavelength typ. 570 nm

**OLD:**



Wavelength typ. 588 nm

**NEW:**



Wavelength typ. 589 nm

**RELIABILITY / QUALIFICATION SUMMARY:**

Product approval is according to reliability requirements and is internally released by Quality and Product Management Departments.

**DATA SHEET CHANGE:**

Yes

No

**Würth Electronics Midcom Inc.**  
 121 Airport Drive · P.O. Box 1330 · Watertown SD  
 57201-6330, USA  
 T: +1 (605) 886 4385 · Toll Free: +1 (800) 643 2661  
 www.we-online.com



## PRODUCT NOTIFICATION

<b>Date:</b>	6/2/15		
<b>Customer Part Number:</b>	732-4501-2-ND	<b>Würth Electronics Midcom Part Number:</b>	7498011122R
<b>Customer Name:</b>		<b>Würth Electronics Midcom Engineer:</b>	SL Chen
<b>Customer Contact:</b>		<input type="checkbox"/> Contract Manufacturer	

- Product / Process Change     
  Product Termination (no response required)  
 Internal Update

<b>Description and Purpose of Change(s):</b>	<input type="checkbox"/> Major	<input checked="" type="checkbox"/> Minor
1) In order to increase the production capability Würth Electronics Midcom will implement a transfer of production. 2) To improve the processability, the marking will be changed from ink marking to LASER marking. Therefore the WE logo will be changed to letters WE. 3) For internal standardization, Würth Electronics Midcom will mark the part with the global part number (749xxx) instead of the old Midcom part number (MICxxx). 4) In order to enhance the product reliability, Würth Electronics Midcom will change the LEDs used on the parts.		

<b>Impact on Form, Fit, Function, Quality or Reliability:</b>
There will be no impact on Quality or Reliability. There is a minor change to the LEDs as shown below. We use the same control plan and manufacturing techniques for this product at both manufacturing facilities

Select one action below and return completed/signed form within 90 days. Failure to do so authorizes Würth Electronics Midcom to proceed immediately with the change.

- Proposed changes accepted, proceed immediately.  
 Samples required. You have 90 days from receipt of this form to evaluate samples and accept/reject changes. If no response received within 90 days, changes will be implemented automatically.  
 Proposed changes accepted, new product can be shipped 90 days after origination date of this form.  
 Proposed changes rejected.

Signature: \_\_\_\_\_ Date: \_\_\_\_\_

The following order(s) are on hold and will not proceed until your approval is received.

Part Number	Sales Order #	Purchase Order #	Quantity	Ship Date



1) Production site is marked in the Lotnumber which will change from 223 xx  
xxx xxxx xxx to 260 xx xxx xxxx xxx.

2) Old marking:

New marking:





The new LEDs will have a round form at the LED head, while the head of the old LEDs is flattened. Optical differences for switched on LEDs are small (see wavelengths at pictures below) and have no impact on the general function of the RJ45 connector.

**OLD:**



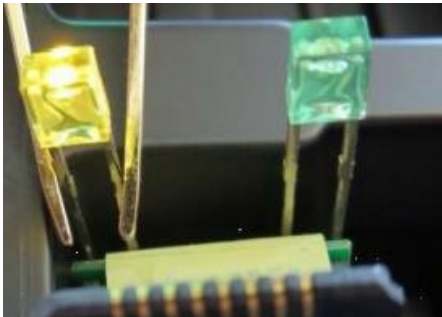
Wavelength typ. 568 nm

**NEW:**



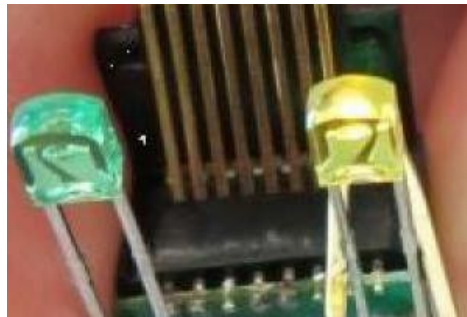
Wavelength typ. 570 nm

**OLD:**



Wavelength typ. 588 nm

**NEW:**



Wavelength typ. 589 nm

**RELIABILITY / QUALIFICATION SUMMARY:**

Product approval is according to reliability requirements and is internally released by Quality and Product Management Departments.

**DATA SHEET CHANGE:**

Yes

No

1) Production site is marked in the Lotnumber which will change from 223 xx  
xxx xxxx xxx to 260 xx xxx xxxx xxx.

2) Old marking:

New marking:



The new LEDs will have a round form at the LED head, while the head of the old LEDs is flattened. Optical differences for switched on LEDs are small (see wavelengths at pictures below) and have no impact on the general function of the RJ45 connector.

**OLD:**



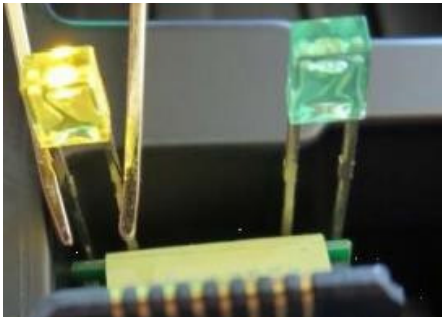
Wavelength typ. 568 nm

**NEW:**



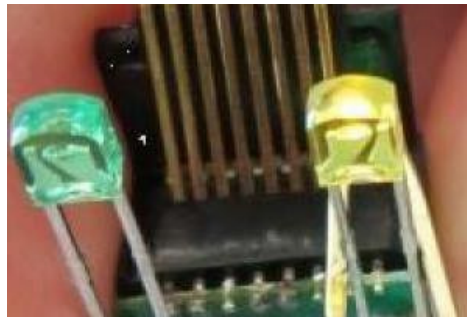
Wavelength typ. 570 nm

**OLD:**



Wavelength typ. 588 nm

**NEW:**



Wavelength typ. 589 nm

**RELIABILITY / QUALIFICATION SUMMARY:**

Product approval is according to reliability requirements and is internally released by Quality and Product Management Departments.

**DATA SHEET CHANGE:**

Yes

No