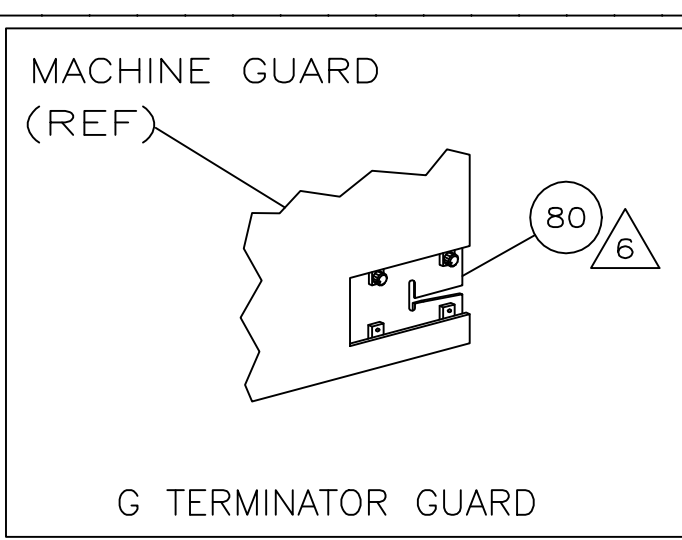
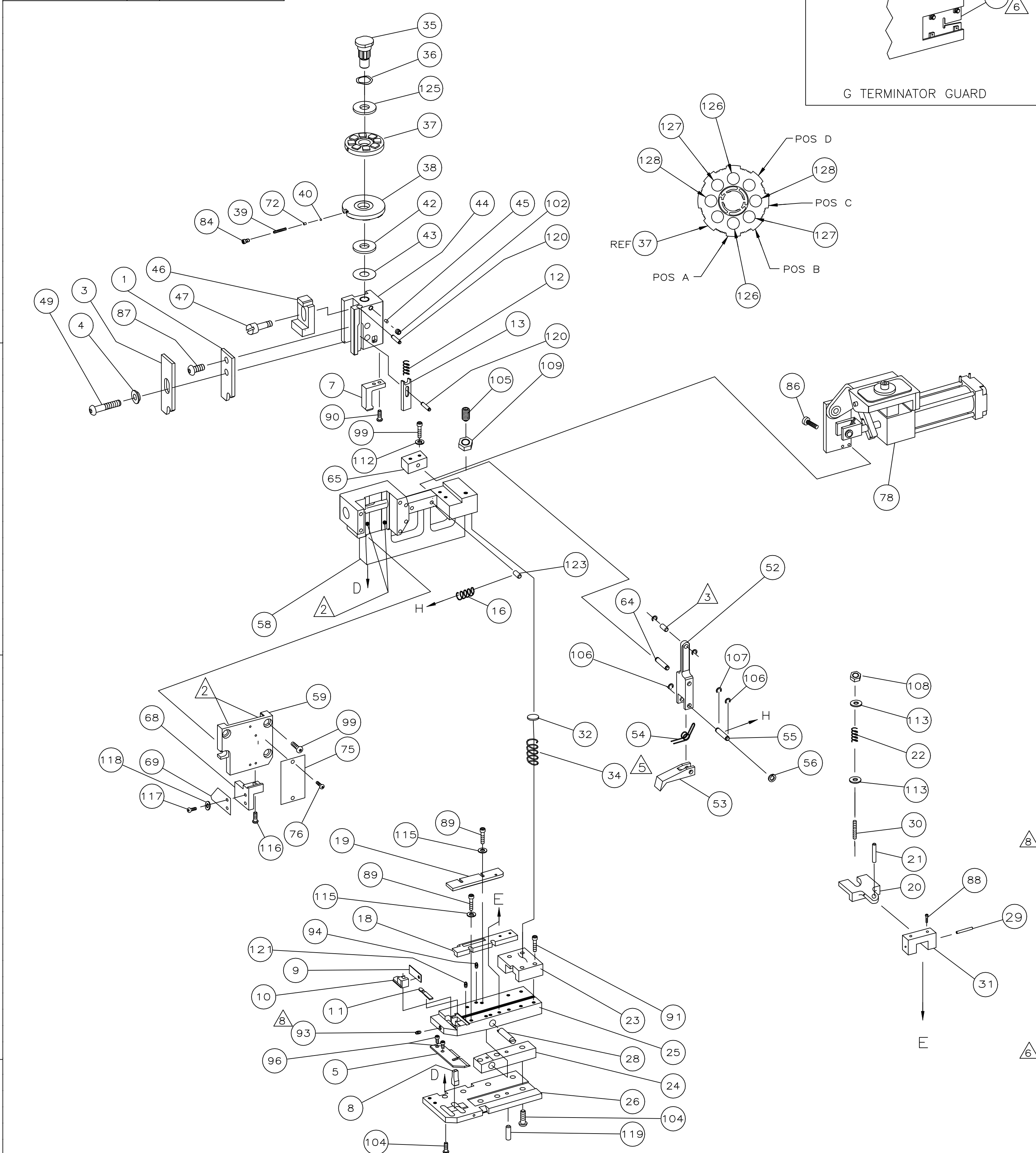


THIS DRAWING IS UNPUBLISHED.			RELEASED FOR PUBLICATION		
COPYRIGHT - By - ALL RIGHTS RESERVED.					
PART NUMBER	REV	FIRST USED			
687392-9	M	354500-1			



687392-9.B.SH1 .187 & .205 FLAG FASTON™ TERMINAL						
CRIMPING DATA						
WIRE SIZE	CRIMP	SIZE	TYPE	RANGE		
.187	A	.040±.002 [1.01±0.05mm]	TAB LOCK	20-16		
.187	B	.037±.002 [0.94±0.05mm]				
.205	C	.035±.002 [0.89±0.05mm]				
	D	NOT	USED			
WIRE STRIP LENGTH TERM APPL SPEC FEED APPL INSTRUCTION SET UP GAGE LAYOUT						
114-02078	.650	408-8037	-	-	-	-

REV	DATE	BY	CHK	APPD
M1	17JAN2019	GK	GB	



QTY	REV	DESCRIPTION	ITEM NO
1	-	5-354779-2 PIN, WIRE DISC (.3250)C	128
2	-	4-354779-8 PIN, WIRE DISC (.3230)B	127
2	-	4-354779-4 PIN, WIRE DISC (.3210)A	126
1	-	986950-1 WASHER, FLAT PRECISION	125
1	-	3-22183-9 PIN, GROOVED(.187 X 1.25)	123
2	-	3-21028-2 PIN, SLOTTED SPRING (Ø094X.25)	121
2	-	4-21028-9 PIN, SLOTTED SPRING (Ø125X.38)	120
1	-	21029-5 PIN, SLOTTED SPRING (Ø188X.75)	119
2	-	21024-3 WASHER, LOCK (#6)	118
2	-	1-21000-8 SCREW,SHC(6-32X.25)STOP	117
1	-	2-22603-0 SCREW,SHC(8-32X.38)MTG	116
4	-	21024-4 WASHER, LOCK (#8)	115
2	-	21055-6 WASHER, FLAT (#8)	114
2	-	21899-2 WASHER,FLAT (#10)	113
2	-	21024-5 WASHER, LOCK (#10)	112
1	-	1-22202-7 NUT, HEX (5/16-24)	109
1	-	21022-3 NUT,HEX(LOCKING) (10-32)	108
1	-	1-21986-2 RING,RET "E" Ø5/16	107
2	-	21045-3 RING,RET "C" Ø5/16	106
1	-	8-21007-5 SCREW,SKT SET(5/16-24X.75)	105
7	-	2-22733-8 SCREW, BHC (1/4-20X.63)	104
1	-	21009-2 SCREW,SKT SET(1/4-20X.25)	103
1	-	3-21000-9 SCREW, SHC (10-32X1.00)	100
6	-	3-21000-8 SCREW, SHC (10-32X.88)	99
1	-	3-21000-6 SCREW, SHC (10-32X.62)	98
2	-	7-21000-6 SCREW, SHC (10-32X.38)	96
1	-	4-21006-5 SCREW, SKT SET (8-32X.62)	94
1	-	21061-9 SCREW, SKT SET (8-32X.25)	93
4	-	2-21000-9 SCREW, SHC (8-32X.75)	91
2	-	1-23030-1 SCREW, SHC (NYLOK)(8-32X.62)	90
4	-	2-22603-3 SCREW, SHC (8-32X.62)	89
2	-	2-21000-8 SCREW, SHC (8-32X.62)	88
1	-	2-21002-1 SCREW, SBHC (8-32X.38)	87
2	-	21001-3 SCREW,SHC (1/4-20X.62)	86
1	-	23030-1 SCREW, SHC(NYLOK)(6-32X.25)	84
REF	-	A 679532-1 INSERT, GUARD	80
1	-	D 462622-2 AIR FEED ASSEMBLY	78
2	-	A 21017-2 SCR,DRIVE(#2X.19)ID	76
1	-	B 461264-1 PLATE, IDENTIFICATION	75
1	-	A 690603-1 SPRING, ASSIST	72

REV	DATE	BY	CHK	APPD
M1	17JAN2019	GK	GB	

-9	BENCH MODEL G	AIR FEED
----	---------------	----------

QTY	REV	DESCRIPTION	ITEM NO
1	-	318530-2 STOP, WIRE	69
1	-	318529-1 BLOCK, HOUSING	68
1	-	456987-1 BLOCK, PIVOT	65
1	-	457058-1 PIN, PIVOT	64
1	-	318528-1 CAP, RAM	59
1	-	457079-1 HOUSING	58
1	-	25745-1 RING, SPLIT	56
1	-	240624-1 PIN, FEED FINGER	55
1	-	691499-1 SPRING, FEED FINGER	54
1	-	454568-2 FINGER, FEED	53
1	-	457057-1 ARM, PIVOT	52
1	-	3-21002-5 BOLT, CRIMPER	49
1	-	22353-8 SCREW, SHOULDER	47
1	-	690578-1 BLOCK, INSULATION ADJUST	46
1	-	690191-1 PLUG, NYLON	45
1	-	454574-1 RAM	44
1	-	690125-1 WASHER, LAMINATED	43
1	-	1-690124-1 WASHER, RAM	42
1	-	23241-6 BALL, STEEL	40
1	-	690170-1 SPRING, COMPRESSION	39
1	-	690142-1 DISC, INSULATION	38
1	-	354777-1 WIRE DISC, PLASTIC	37
1	-	22480-5 WASHER, SPRING	36
1	-	690212-1 POST, RAM	35
1	-	3-23846-5 SPRING, HINGE BAR	34
1	-	690573-1 SPACER, SPRING	32
1	-	454569-1 DRAG MOUNT	31
1	-	1-22354-8 STUD, DRAG	30
1	-	21030-2 PIN, DRAG MOUNT	29
1	-	1633530-1 PIN, HINGE	28
1	-	684905-1 PLATE, BASE	26
1	-	454579-2 HINGE BAR	25
1	-	690571-1 BLOCK, STABILIZER	24
1	-	690585-1 BLOCK, PRESSURE	23
1	-	22282-5 SPRING, DRAG	22
1	-	21030-6 LEVER, DRAG	21
1	-	454570-1 DRAG, STOCK	20
1	-	454573-1 GUIDE, STRIP (REAR)	19
1	-	318739-8 GUIDE, STRIP (FRONT)	18
1	-	2-22287-6 SPRING, FEED RETURN	16
1	-	692134-7 POSITIONER, TERMINAL	13
1	-	5-22280-5 SPRING, TERM. POSITIONER	12
1	-	454712-4 PLATE, REAR SHEAR	11
1	-	C 454578-1 ANVIL INSERT	10
1	-	B 690569-2 PLATE, FRONT SHEAR	9
1	-	D 690718-1 ANVIL	8
1	-	B 454575-3 BLADE, SLUG	7
1	-	B 684906-1 PLATE, ANVIL RETAINING	5
1	-	B 690574-1 SPACER, TUBULAR INSUL CRIMPER	4
1	-	C 690715-1 CRIMPER, INSULATION	3
1	-	C 690716-3 CRIMPER, WIRE	1

- 1 RECOMMENDED SPARE PARTS.
- 2 GREASE LIGHTLY.
- 3 LUBRICATE DAILY USING NO. 20 MACHINE OIL.
- 4 CHANGE TERMINAL POSITIONER AS REQUIRED TO KEEP TERMINAL ON CENTER OF ANVIL.FASTEN EXTRA TERMINAL POSITIONER TO APPLICATOR.
- 5 AFTER ASSEMBLY OF APPLICATOR, PROPER SPRING PRESSURE (ITEM 34) CAN BE OBTAINED BY TIGHTENING SET SCREW (ITEM 105) UNTIL CONTACT IS MADE WITH SPACER (ITEM 32) THEN TIGHTEN AN ADDITIONAL 5 1/2 - 6 REVOLUTIONS.

- 6 GUARD MUST BE IN PLACE WHEN OPERATING APPLICATOR IN A BENCH MACHINE
- 7 WIRE STRIP LENGTH .205 SERIES .205-.235 .187 SERIES .173-.203
- 8 APPLY SEALANT 1-23419-5 AT ASSEMBLY.

QTY REQD PER ASSY	REV	DESCRIPTION	ITEM NO
1	-	687392-9 END FEED HINGE BAR APPLICATOR	1

THIS DRAWING IS A CONTROLLED DOCUMENT.

DIMENSIONS: INCHES	TOLERANCES UNLESS OTHERWISE SPECIFIED:	DWG NO: 00779	REV: M1
0 PLC ± .001	1 PLC ± .002	SCALE: NTS	
2 PLC ± .003	3 PLC ± .004	SHEET 1 OF 1	
4 PLC ± .005	ANGLES ± .005	REV M1	

TE Connectivity  
END FEED HINGE BAR APPLICATOR  
CUSTOMER DRAWING