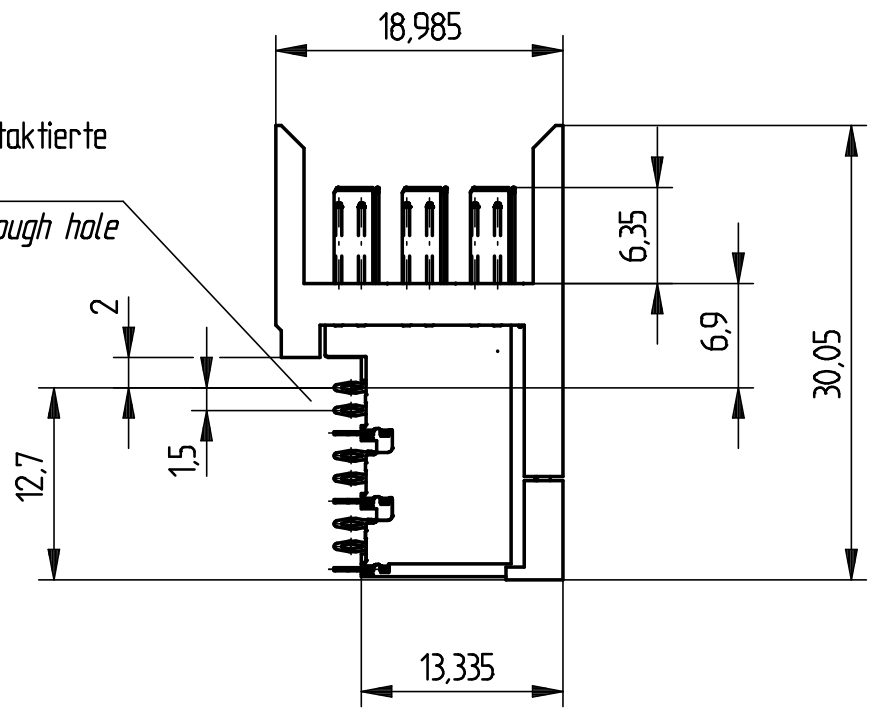
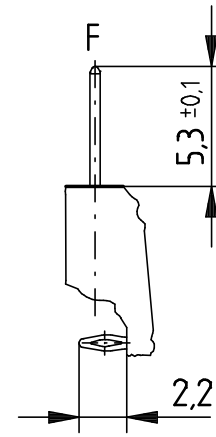
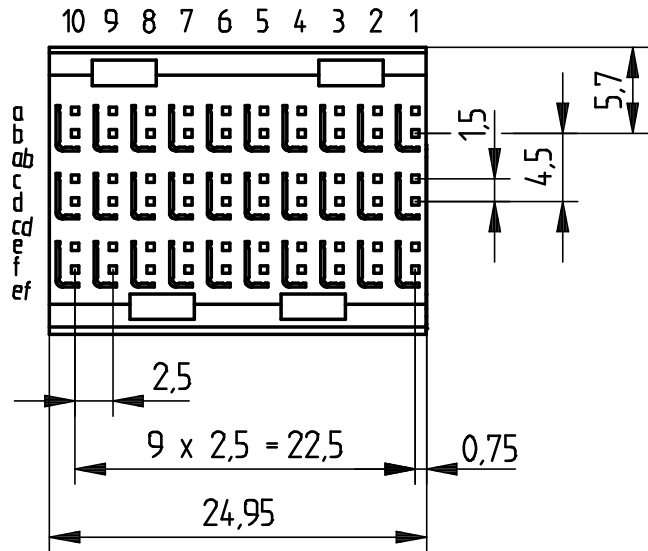


EN-Zone für durchkontaktierte Löcher  $\Phi 0.6 \pm 0.05$   
 compliant zone for through hole  $\Phi 0.6 \pm 0.05$

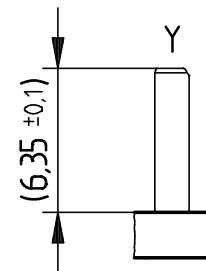
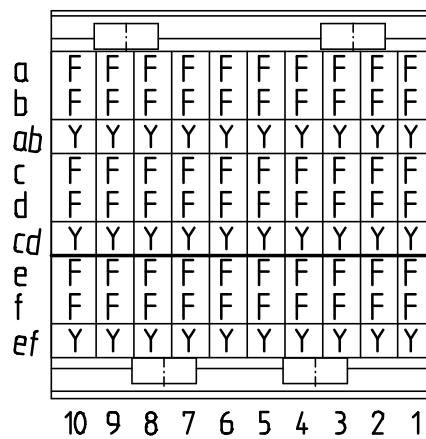


Kontaktversion, Messerkontakt  
 Contact Option, Male Contact

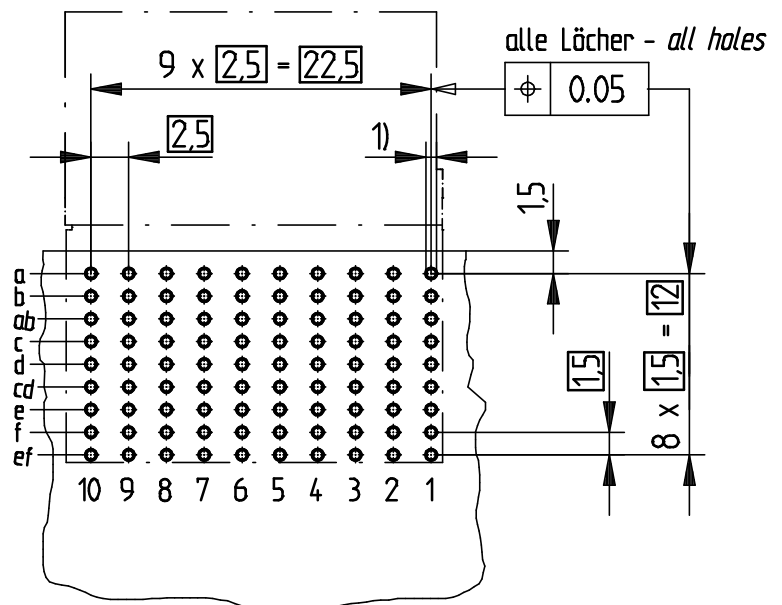


Kontaktversion, Schirmmesser  
 Contact Option, Shielding Contact

Bestückungsplan - contact layout



Lochbild für Leiterplatte Board hole pattern  
 (Bestückungsseite) (Component mounting side)



1)  $\Phi 0.6 \pm 0.05$  Durchmesser des metallisierten Loches  
 $\Phi 0.6 \pm 0.05$  Diameter of finished plated-through hole

$\Phi 0.7 \pm 0.02$  Bohrungsdurchmesser des Loches  
 $\Phi 0.7 \pm 0.02$  Diameter of drilled hole

Schichtaufbau im metallisierten Loch  
 siehe Zeichnung 114406

Metal plating of plated-through hole  
 see drawing 114406

|   |  |                |   |     |
|---|--|----------------|---|-----|
| Information: F + Y<br>siehe Bestückungsplan /<br>see contact layout<br>Anforderungsstufe 2 / class 2  | Tolerances   |                | Scale   | 2:1 |
|   | All Dimensions in mm   |                |   |     |
| All rights reserved.<br>Only for information.<br>To insure that this is the latest<br>version of this drawing, please<br>contact one of the ERNI companies<br>before using. | Subject to modification without<br>prior notice.<br>Drawing will not be updated. |                | Designation<br>ERmetZD Messerleiste abg. 3-10<br>ERmetZD Male Con. angle 3-10 |     |
|   |  | www.ERNI.com   | 204781  |     |
| b   | 30.01.2012   |                |   |     |
| Index   | Date   | H:00058318.SZA | ERMZD   |     |