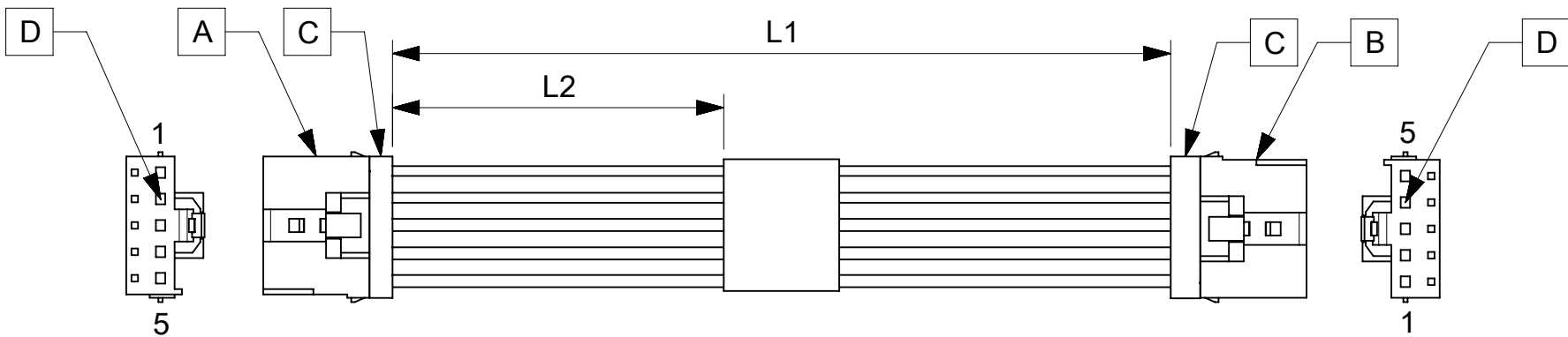


ITEM	MOLEX P/N	DESCRIPTION	QTY	UOM
A,B	2074580005	L1NK 396 Receptacle Housing -1X5	2	PC
C	2074590005	L1NK 396 TPA -1X5	2	PC
D	455703002	KKGen2 156 Tin/nickel Crimp 18-20 FORMED	10	PC
E	-	LABEL	1	PC

FROM	TO	CABLE DESCRIPTION	COLOR
A1	B5	18AWG PVC BK UL1015 HOOKUP WIRE	BLACK
A2	B4		
A3	B3		
A4	B2		
A5	B1		



PART NUMBER	L1	L2	TITLE
369210500	75±5	25REF	Link396 5 Circuit 75MM
369210502	150±10	63REF	Link396 5 Circuit 150MM
369210503	300±15	138REF	Link396 5 Circuit 300MM
369210510	1000±20	488REF	Link396 5 Circuit 1000MM

DATE	REV	DESCRIPTION	REVISED BY
2019.03.27	A	INITIAL RELEASE	SSHIVASHANKA

- NOTES**
- Cable assembly must pass 100% continuity and polarity test.
 - Label text must be 2mm max. In height with Arial font.
 - Connector view shown is from mating side.

P/N:36921XXXX — MOLEX PN
 MOLEX
 BATCH WK/YR

THIS DRAWING CONTAINS INFORMATION THAT IS PROPRIETARY TO MOLEX ELECTRONIC TECHNOLOGIES, LLC AND SHOULD NOT BE USED WITHOUT WRITTEN PERMISSION DIMENSION UNITS: mm SCALE: NTS CURRENT REV DESC:			
GENERAL TOLERANCES (UNLESS SPECIFIED) ANGULAR TOL ± °			
4 PLACES ± 3 PLACES ± 2 PLACES ± 1 PLACE ± 0 PLACES ±		INITIAL REVISION: DRWN: SSHIVASHANKA 2019/03/27 APPR: MNARAYAN01 2019/05/08	
DRAFT WHERE APPLICABLE MUST REMAIN WITHIN DIMENSIONS		PRODUCT CUSTOMER DRAWING DOCUMENT NUMBER: 369210500 DOC TYPE: PSD DOC PART: 000 REVISION: A	
DRAFT WHERE APPLICABLE MUST REMAIN WITHIN DIMENSIONS		MATERIAL NUMBER: SEE TABLE CUSTOMER: GENERAL MARKET SHEET NUMBER: 1 OF 1	