

4

3

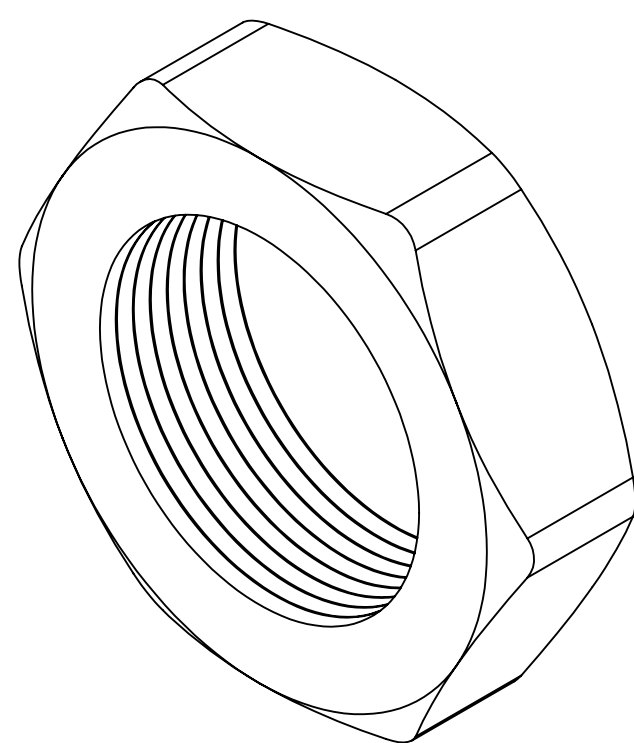
2

1

PART NUMBERS		THREAD TYPE AND SIZE For thread specs see page 29	DIMENSIONS INCHES (MM)	
Black	Gray		G Thickness	H Wrenching Flats
NM-12-BK NP-07-BK	NM-12-GY NP-07-GY	M12 X1.5 PG 7 / 1/4" NPT	.20 (5) .20 (5)	.67 (17) .75 (19)
NP-09-BK NN-09-BK	NP-09-GY --	PG 9 3/8" NPT	.24 (6) .27 (7)	.91 (23) .94 (24)
NM-16-BK NP-11-BK	NM-16-GY NP-11-GY	M16 x 1.5 PG 11	.20 (5) .20 (5)	.87 (22) .94 (24)
NM-20-BK NP-13-BK	NM-20-GY NP-13-GY	M20 x 1.5 PG 13.5	.24 (6) .24 (6)	1.06 (27) 1.06 (27)
NN-13-BK NP-16-BK	NN-13-GY NP-16-GY	1/2" NPT PG 16	.24 (6) .24 (6)	1.06 (27) 1.18 (30)
NM-25-BK	NM-25-GY	M25 x 1.5	.28 (7)	1.42 (36)

PART NUMBERS		THREAD TYPE AND SIZE For thread specs see page 29	DIMENSIONS INCHES (MM)	
Black	Gray		G Thickness	H Wrenching Flats
NP-21-BK NN-21-BK	NP-21-GY	PG 21 3/4" NPT	.27 (7) .27 (7)	1.41 (36) 1.26 (32)
NM-32-BK NP-29-BK	NM-32-GY NP-29-GY	M32 x 1.5 PG 29	.28 (7) .27 (7)	1.61 (41) 1.81 (46)
NN-29-BK NM-40-BK	NM-40-GY	1" NPT M40 x 1.5	.27 (7) .28 (7)	1.57 (40) 1.97 (50)
NP-36-BK NM-50-BK	NP-36-GY NM-50-GY	PG 36 M50 x 1.5	.31 (8) .31 (8)	2.36 (60) 2.36 (60)
NP-42-BK NP-48-BK	NP-42-GY NP-48-GY	PG 42 PG48	.31 (8) .31 (8)	2.56 (65) 2.76 (70)
NM-63-BK	NM-63-GY	M63 x 1.5	.31 (8)	2.95 (75)

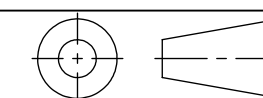
See pages 4-11 for the Nylon Product Line. To specify fittings with Locking Nut in one part number add "-N" to the connector number. **Example:** CD13NA-BK-N (product will still be invoiced separately).



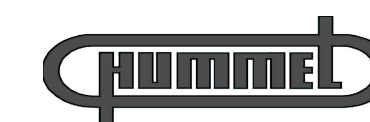
NOTES:

- 1) GENERAL DIMENSIONS DRAWINGS.
- 2) DIMENSIONS [] ARE IN INCHES.
- 3) DIMENSIONS NOTED ARE FOR REFERENCE ONLY.

Third angle projection



7374 S. EAGLE STREET
CENTENNIAL, CO 80112-4221 USA
TEL: +1-303-699-1135
TOLL FREE: +1-800-456-9012
E MAIL: info@sealconusa.com,
WEBSITE: www.sealconusa.com



4

3

2