



P/N 1109681-XXX Mirror Image Collet Socket

FEATURES

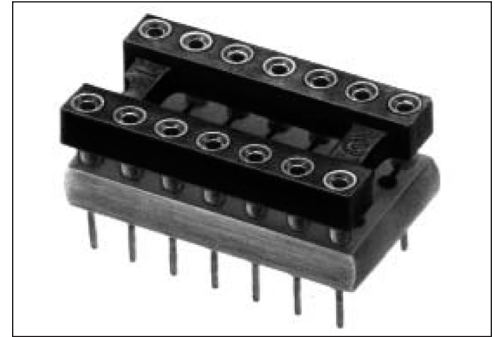
- A cost-effective solution for design problems, this socket reroutes connections from a row of female contacts on top, to the opposite row of male pins on bottom.
- IC can be replaced at the opposite side of a PCB.

GENERAL SPECIFICATIONS

- FEMALE SOCKET MATERIAL: black UL 94V-0 glass-filled 4/6 Nylon 170°C continuous use temp.
- PCB: FR-4, 0.062 [1.56] or 0.094 [2.39] thick
- MALE PIN: Brass 360 1/2-hard per UNS C36000, ASTM B16/B16M
- MALE PIN PLATING: 200μ [5.08μ] Sn/Pb 93/7 per ASTM B579-73 over 100μ [2.54μ] Ni per SAE-AMS-QQ-N-290
- FEMALE PIN BODY: Brass 360 1/2-hard per UNS C36000, ASTM B16/B16M
- FEMALE PIN BODY PLATING: 10μ [0.254μ] Au per MIL-G-45204 over 100μ [2.54μ] Ni per SAEAMS-QQ-N-290
- 4-FINGER COLLET CONTACT: BeCu per UNS C17200, ASTM B194-08
- CONTACT PLATING: 10μ [0.254μ] Au per MIL-G-45204 over 50μ [1.27μ] Ni per SAE-AMS-QQ-N-290
- CONTACT CURRENT RATING: 3 amps
- OPERATING TEMPERATURE: 221°F [105°C]
- INSERTION FORCE: 180g/pin
- WITHDRAWAL FORCE: 90g/pin
- NORMAL FORCE: 140g/pin; based on a 0.018 [0.46] dia. test lead
- SOCKET ACCEPTS: leads 0.015-0.025 [0.38-0.64] in dia., 0.100-0.125 [2.54-3.18] long

MOUNTING CONSIDERATIONS

- SUGGESTED PCB HOLE SIZE: 0.028 ±0.003 [0.71 ±0.08] dia.



CUSTOMIZATION: In addition to the standard products shown on this page, Aries specializes in custom design and production. Special materials, platings, sizes, and configurations can be furnished, depending on the quantity. **NOTE:** Aries reserves the right to change product general specifications without notice.

ORDERING INFORMATION

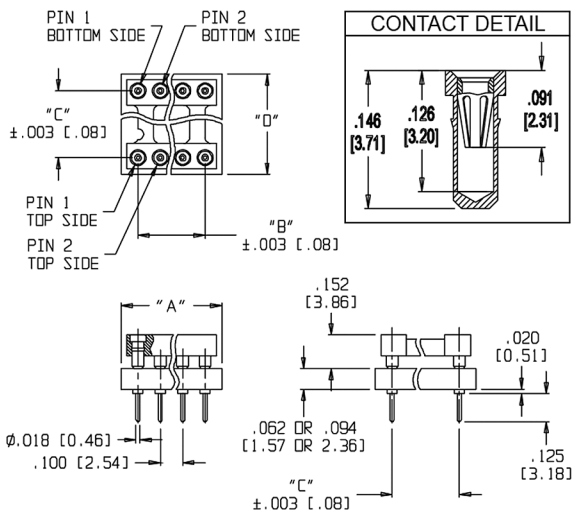
Consult Factory – Aries will assign a special P/N

ALL DIMENSIONS: INCHES [MILLIMETERS]

ALL TOLERANCES: ±0.005 [0.13] UNLESS OTHERWISE SPECIFIED

ORDER REQUIREMENT: 100-PIECE MINIMUM

CONSULT FACTORY FOR OTHER SIZES AND CONFIGURATIONS



| Wire List Example – 8 Pins | |
|----------------------------|-------------|
| Top Side | Bottom Side |
| 1 | 8 |
| 2 | 7 |
| 3 | 6 |
| 4 | 5 |
| 5 | 4 |
| 6 | 3 |
| 7 | 2 |
| 8 | 1 |

| Centers "C" | Dim. "D" | Available Sizes |
|---------------|---------------|---------------------------|
| 0.300 [7.62] | 0.450 [11.43] | 8, 14, 16, 18, 20, 24, 28 |
| 0.400 [10.16] | 0.550 [13.97] | 20, 22, 24 |
| 0.600 [15.24] | 0.750 [19.05] | 24, 28, 32, 40, 48 |



Bristol, PA 19007-6810 USA
 TEL (215) 781-9956 • FAX (215) 781-9845
 WWW.ARIESELEC.COM • INFO@ARIESELEC.COM