

MATERIALS AND FINISHES:

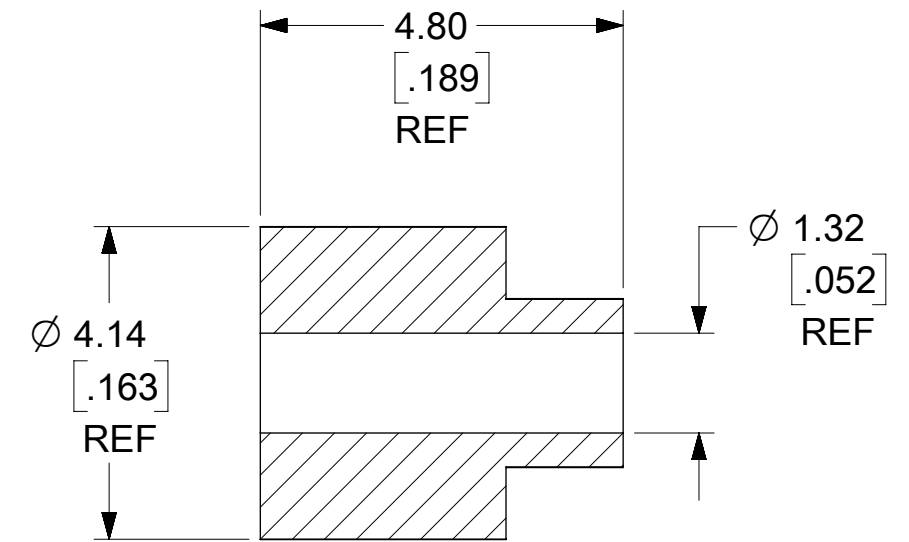
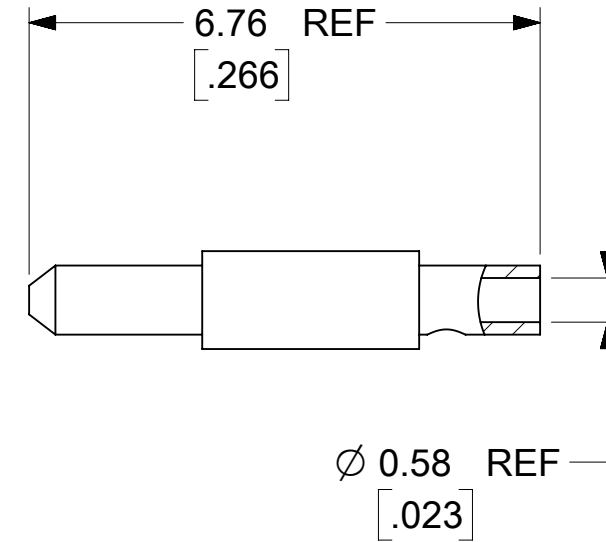
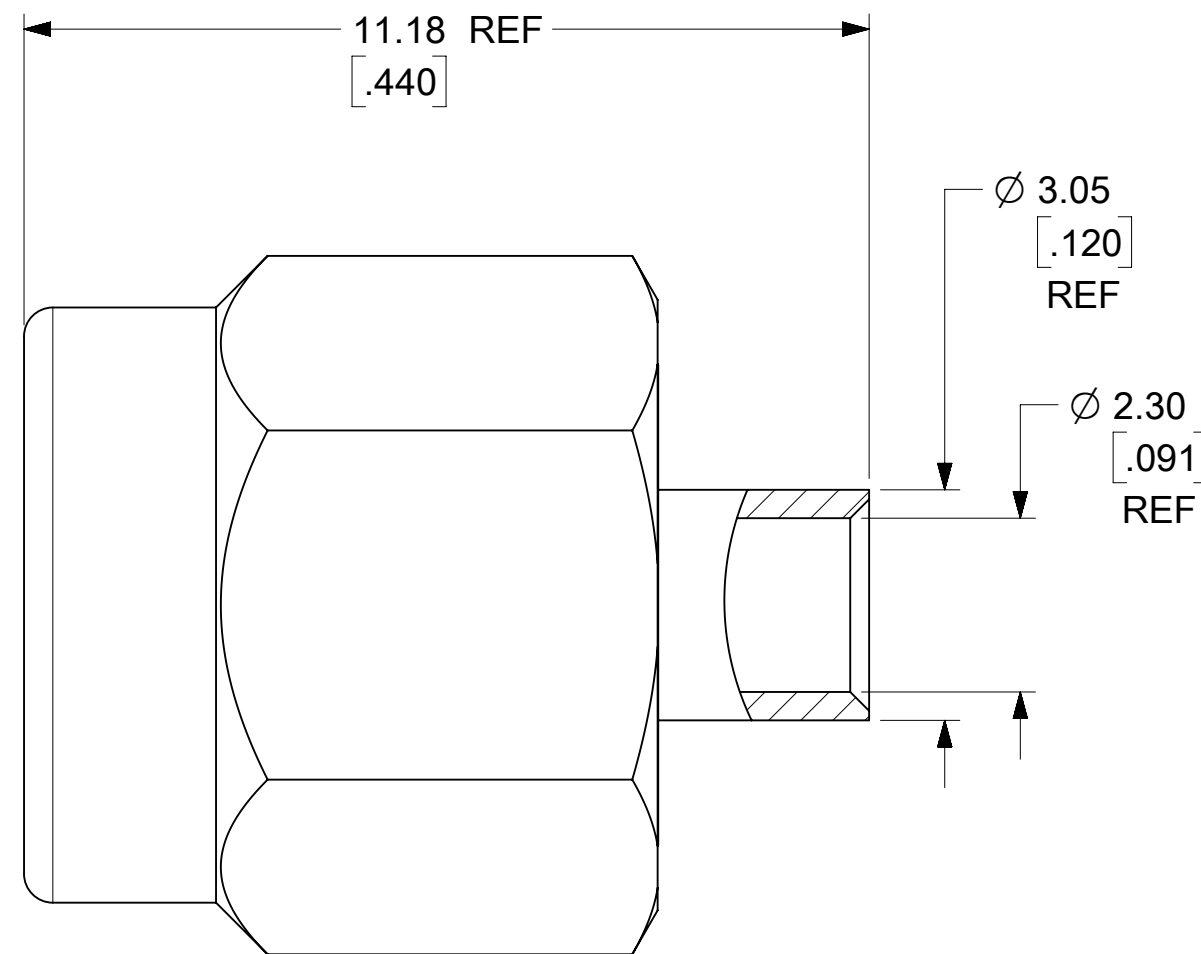
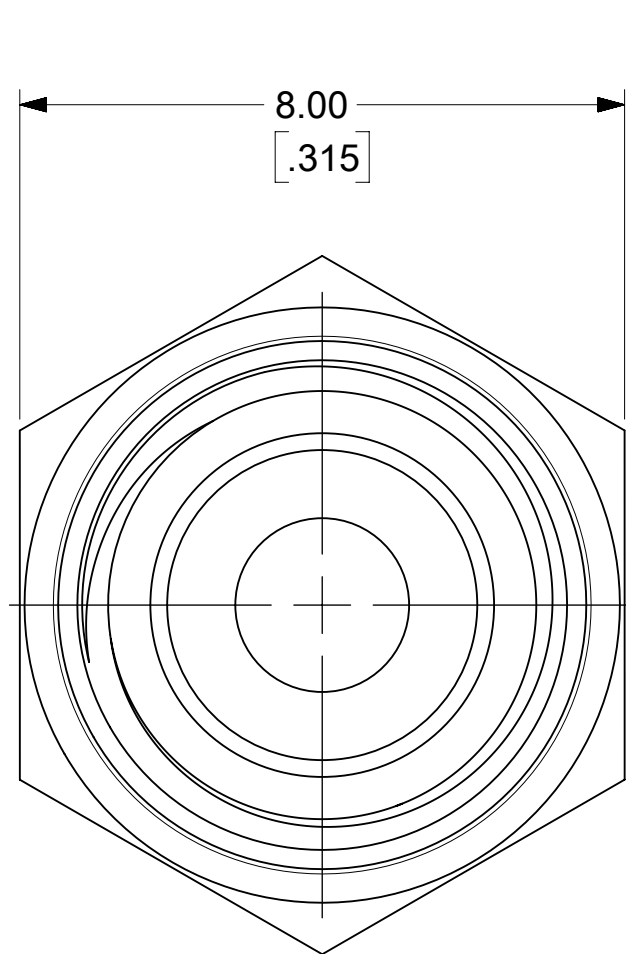
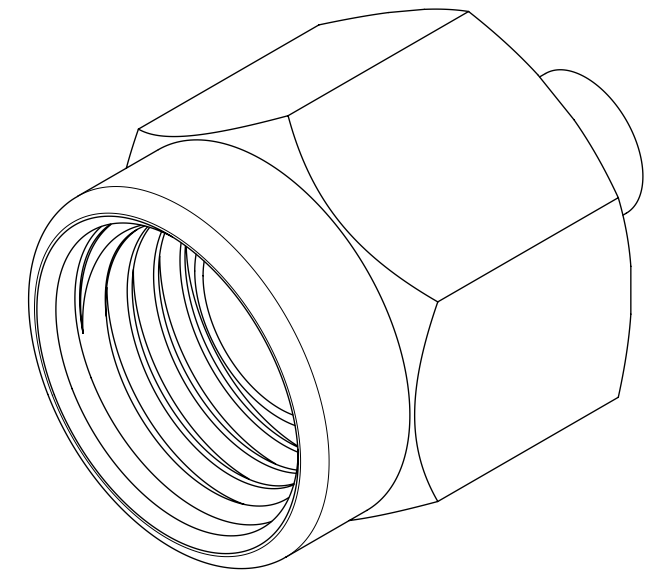
BODY: BRASS
 FINISH: GOLD (10 μ-in MIN) OVER
 NICKEL (100 μ-in MIN)

COUPLING NUT: BRASS
 FINISH: SEE TABLE

CENTER CONTACT: BRASS
 FINISH: GOLD (10 μ-in MIN) OVER
 NICKEL (100 μ-in MIN)

INSULATOR: PTFE

GASKET: SILICONE RUBBER



73251-3042	BULK [NICKEL (70 μ-in MIN) OVER COPPER (30 μ-in MIN)]
73251-3041	ONE ITEM 73251-3040 PER BAG WITH LABEL
73251-3040	BULK [GOLD (1μ-in MIN) OVER NICKEL (50 μ-in MIN)]
PART NO.	PACKAGING (COUPLING NUT PLATING)

AS-89675-500	CABLE ASSEMBLY INSTRUCTIONS
PS-89675-346	ELEC/MECH PERFORMANCE
MIL-STD-348B, FIG 310-1	INTERFACE
SPECIFICATION	DESCRIPTION

SYMBOLS	THIS DRAWING CONTAINS INFORMATION THAT IS PROPRIETARY TO MOLEX ELECTRONIC TECHNOLOGIES, LLC AND SHOULD NOT BE USED WITHOUT WRITTEN PERMISSION		CURRENT REV DESC:		molex
	DIMENSION UNITS	SCALE			
∇ = 0	MM/IN	NTS	EC NO: 626068 DRWN: SSSHAH 2019/10/14 CHK'D: LMEIER 2020/01/10 APPR: AROBERTSON 2020/01/10		SMA PLUG, STRAIGHT CABLE SR.086, 50 OHMS EWR-13393, SMA-PC
∇ = 0	GENERAL TOLERANCES (UNLESS SPECIFIED)				
∇ = 0			INITIAL REVISION: DRWN: AROBERTSON 2007/05/11 APPR: JWIENER 2007/05/11		PRODUCT CUSTOMER DRAWING
S = 0	4 PLACES ±	±			
∇ = 0	3 PLACES ±	±	ANGULAR TOL ± 1.0 °		DOCUMENT NUMBER SD-73251-304
∇ = 0	2 PLACES ±	±			
∇ = 0	1 PLACE ±	±	THIRD ANGLE PROJECTION		DOC TYPE PSD
∇ = 0	0 PLACES ±	±			
∇ = 0	DRAFT WHERE APPLICABLE MUST REMAIN WITHIN DIMENSIONS		DRAWING		DOC PART 001
∇ = 0			SERIES		REVISION B
			C-SIZE		MATERIAL NUMBER SEE TABLE
			73251		CUSTOMER
					SHEET NUMBER 1 OF 1

DOCUMENT STATUS	P1	RELEASE DATE	2020/01/10	14:34:32
-----------------	----	--------------	------------	----------