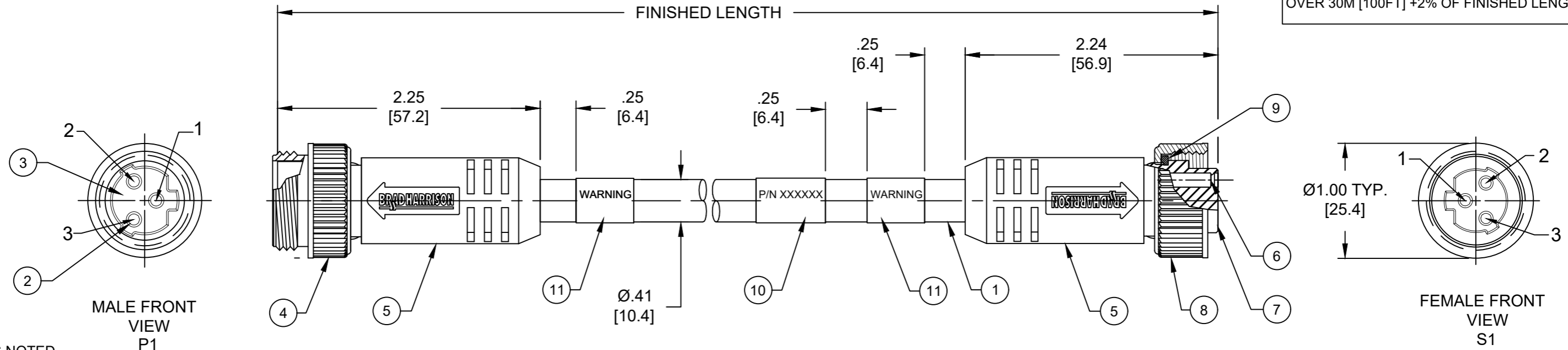


PART NO	ENGINEERING NO.	FINISHED LENGTH
1300102117	113130K13M005	0.5M [1FT 7 IN]
1300102099	113130K13M300	30M [98FT 5 IN]
1300102225	113130K13M750	75M [246FT 1 IN]

CABLE LENGTH TOLERANCES	
<.3M [1FT]:	+19mm-0 [+0.75in-0]
.3 - .9M [1 - 3FT]:	+44.5mm-0 [+1.75in-0]
.9 - 1.8M [3 - 6FT]:	+55.6mm-0 [+2.19in-0]
1.8 - 3.7M [6 - 12FT]:	+88.9mm-0 [+3.50in-0]
3.7 - 7.3M [12 - 24FT]:	+165.1mm-0 [+6.50in-0]
7.3-14.6M [24 - 48FT]:	+317.5mm-0 [+12.50in-0]
14.6 - 30.5M [48-100FT]:	+622.3mm-0 [+24.50in-0]
OVER 30M [100FT]:	+2% OF FINISHED LENGTH

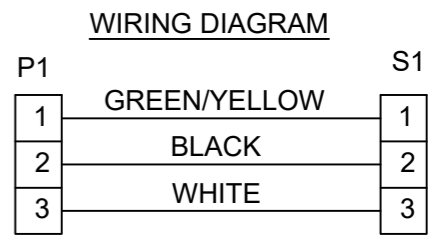


- NOTES:
- MATERIAL: AS NOTED
 - FINISH: AS NOTED
 - ELECTRICAL:
VOLTAGE: 500V PER IEC60664
600V PER UL2237
CURRENT: 13A
 - TEMP RATING: -20°TO +90°C
 - PROTECTION: IP67 (WHEN MATED)
 - COUPLING THREAD: 7/8-16UN
 - UL LISTED FILE: E258922
 - ALL DIMENSIONS ARE FOR REFERENCE UNLESS TOLERANCED OR NOTED OTHERWISE

PART NO. LEGEND

113130K13M010

FINISHED LENGTH
M005 = 0.5 METER
M010 = 1 METER
M100 = 10 METER



ITEM	DESCRIPTION	MATERIAL	FINISH
11	WARNING LABEL	VINYL	BLACK/ORANGE
10	WRAP LABEL	VINYL	BLACK/YELLOW
9	FRICTION RING	NYLON	WHITE
8	FEMALE COUPLING NUT	ZINC DIE-CAST	BLACK E-COAT
7	3P FEMALE INSERT	TPE	BLACK
6	CONTACT SOCKET	COPPER ALLOY	GOLD PLATED
5	OVER MOLD	TPE	BLACK
4	MALE COUPLING NUT	ZINC DIE-CAST	BLACK E-COAT
3	3P MALE INSERT	TPE	BLACK
2	CONTACT PIN	COPPER ALLOY	GOLD PLATED
1	CABLE 16/3 (HI FLEX)	TPE JACKET	YELLOW

CABLE FLEX CHARACTERISTICS:

TORSIONAL FLEX TEST	20 MILLION CYCLES PER MIL-C-13777G
BEND FLEX TEST	20 MILLION CYCLES PER MIL-C-13777G
WELD SLAG RESISTANCE	WOODHEAD STANDARD S-300

FUNCTIONAL SYMBOLS	DRAWING CONTAINS INFORMATION THAT IS PROPRIETARY TO MOLEX ELECTRONIC TECHNOLOGIES, LLC AND SHOULD NOT BE USED WITHOUT WRITTEN PERMISSION	SCALE		CURRENT REV DESC: ITEM 9 DESCRIPTION O-RING CHANGED TO FRICTION RING, UPDATE BORDER		molex		
FA=0	EC NO: 706622 DRWN: RSTONE 2022/05/11 CHK'D: ALEON01 2022/05/13 APPR: BWOODMAN 2022/05/17 INITIAL REVISION: DRWN: RSTONE 2017/02/09 APPR: BWOODMAN 2017/03/02	INCH/MM		1:1		BRAD POWER A-SIZE 3 POLE, MALE-FEMALE, STRAIGHT TRI-KEY, 16 AWG, TPE HI-FLEX PRODUCT CUSTOMER DRAWING DOCUMENT NUMBER: SD-130010-037 DOC TYPE: PSD DOC PART: 001 REVISION: D1 MATERIAL NUMBER: 130010 CUSTOMER: GENERAL MARKET SHEET NUMBER: 1 OF 1		
FC=0		GENERAL TOLERANCES (UNLESS SPECIFIED)						
FD=0		4 PLACES ±----		±----				
DIVISIONAL SYMBOLS		3 PLACES ±----		±----				
		2 PLACES ±----		±----				
		1 PLACE ±----		±----				
		0 PLACES ±----		±----				
		ANGULAR TOL ± ---- °						
	DRAFT WHERE APPLICABLE MUST REMAIN WITHIN DIMENSIONS	THIRD ANGLE PROJECTION		DRAWING		SERIES		MATERIAL NUMBER
		B-SIZE		130010		GENERAL MARKET		1 OF 1