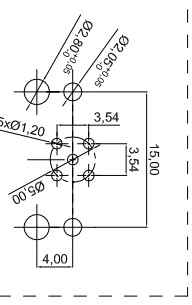
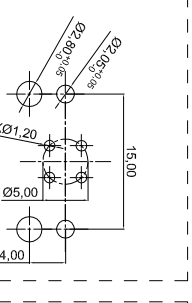
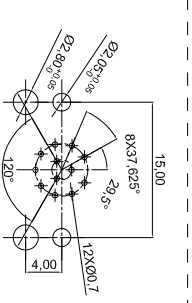
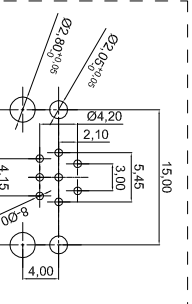
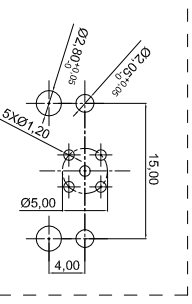
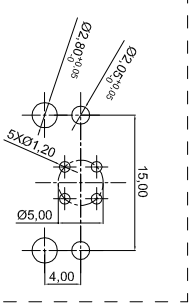


Part Number	Contacts	Rated Voltage		Rated Current
		A/C	D/C	
A-M12-04-FAMA-GTB1		250V	250V	4A
A-M12-05-FAMA-GTB1		60V	60V	4A
A-M12-08-FAMA-GTB1		30V	30V	2A
A-M12-12-FAMA-GTB1		30V	30V	1.5A
A-M12-04-FAMD-GTB1		250V	250V	4A
A-M12-05-FAMB-GTB1		60V	60V	4A

- ② Notes:
1. Waterproof connector rating is IP67/IP68
 2. Insulation Resistance: >100MΩ
 3. Contact Resistance: ≤10mΩ
 4. Mating Cycle: 100 times Min, 500 times Max.
 5. Operating temperature: -25°C ~ +85°C
 - ① 6. Unshielded

①

ITEM	SPECIFICATION	QTY	UNIT
△	BLACK EPOXY RESIN	1	g
△	NYLON BLACK SUPPORT	1	PCS
△	O-RING GREEN VITON Ø10X1.5mm	1	PCS
△	M12 FEMALE MAIN-BOBY BRASS PLATING NICKEL	1	PCS
△	M12 FEMALE NUT BRASS PLATING NICKEL L X W = 9.5 X 15mm	1	PCS
△	M12 Female Connector UL94V-0 Black PIN 1u" Gold plated	1	SET



RoHS compliant
Unit: mm

Scale	Free	Customer-No.	
TOLERANCE		ASSMANN WSW-NO.	A-M12-xx-FAMX-GTB1
.X	±0.5	Date	28.09.2018
.XX	±0.20	Name	Segal
DIM	TOL	Drawing-No.	
X.°	±2.0°	ASS 8050 CO	
X.°	±1.0°	rev03	
Angle	TOL	Replace	
		Sheet	

