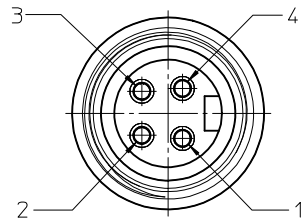
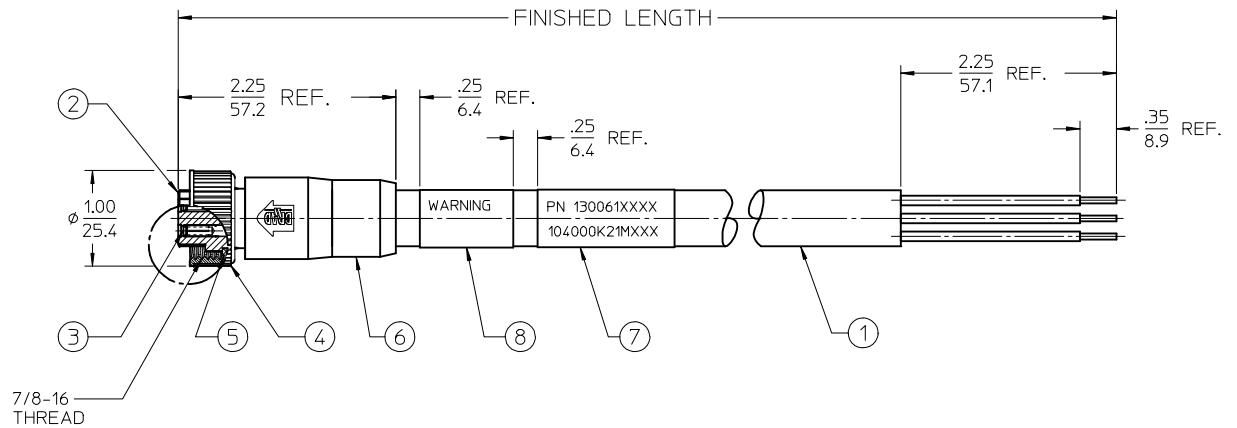


MATERIAL NO.	ENGINEERING NO.	LENGTH
1300611061 (A)	104000K21M200G	65FT 7IN (20M)
1300611059	104000K21M300G	98FT 5IN (30M)
1300611060	104000K21M350G	114FT 10IN (35M)

CABLE LENGTH TOLERANCES	
>.3M [1FT]:	+19mm-0 [+1.75in-0]
.3 - .9M [1 - 3FT]:	+44.5mm-0 [+1.75in-0]
.9 - 1.8M [3 - 6FT]:	+55.6mm-0 [+2.19in-0]
1.8 - 3.7M [6 - 12FT]:	+88.9mm-0 [+3.50in-0]
3.7 - 7.3M [12 - 24FT]:	+165.1mm-0 [+6.50in-0]
7.3-14.6M [24 - 48FT]:	+317.5mm-0 [+12.50in-0]
14.6 - 30.5M [48-100FT]:	+622.3mm-0 [+24.50in-0]
OVER 30M [100FT]	+2% OF FINISHED LENGTH



FEMALE FACE VIEW
SCALE: 2X



- NOTES:
- MATERIAL: AS NOTED
 - FINISHES: AS NOTED
 - ELECTRICAL SPECIFICATIONS
VOLTAGE RATING: 483V PER IEC60664
600V PER UL2237
CURRENT RATING: 15 AMPS
 - PROTECTION: IP67 (WHEN MATED)
 - TEMP RANGE: -20°C TO +90°C
 - DIMS SHOWN ARE FOR REFERENCE
UNLESS NOTED OTHERWISE

1	BLACK #1
2	BLACK #2
3	BLACK #3
4	GREEN/YELLOW

WIRING DIAGRAM

104000K21M200G

CABLE TYPE: 14 AWG TC ER, BLACK

BLACK

FINISHED LENGTH:
M001= .1M
M010= 1.0M
M200= 20.0M

8	WARNING LABEL	VINYL	ORANGE/BLACK
7	WRAP LABEL	VINYL	BLACK/YELLOW
6	OVERMOLD	PVC	BLACK
5	FRICTION RING	NYLON	WHITE
4	FEMALE COUPLING NUT	ZINC ALLOY	BLACK
3	SOCKET CONTACT	Cu ALLOY	GOLD PLATE
2	FEMALE INSERT	PVC	BLACK
1	CABLE, 14/4 TC-ER	TPE	BLACK
ITEM	DESCRIPTION	MATERIAL	FINISH

1300611061 WAS 1300611058 EC NO: IPG2017-0975 DRAWN BY: DRWINRSTONE 2017/04/13 CHKD BY: ZIELINSKI 2017/04/13 APPR: BWOODMAN 2017/04/17	DESCRIPTION	QUALITY SYMBOLS	GENERAL TOLERANCES (UNLESS SPECIFIED)	DIMENSION STYLE	SCALE	DESIGN UNITS	THIRD ANGLE PROJECTION																			
		$\nabla=0$ $\nabla=0$		IN/MM	1:1	INCH																				
A1	REV	DRAFT WHERE APPLICABLE MUST REMAIN WITHIN DIMENSIONS	<table border="1"> <thead> <tr> <th></th> <th>mm</th> <th>INCH</th> </tr> </thead> <tbody> <tr> <td>4 PLACES</td> <td>± ---</td> <td>± ---</td> </tr> <tr> <td>3 PLACES</td> <td>± ---</td> <td>± ---</td> </tr> <tr> <td>2 PLACES</td> <td>± ---</td> <td>± ---</td> </tr> <tr> <td>1 PLACE</td> <td>± ---</td> <td>± ---</td> </tr> <tr> <td>0 PLACE</td> <td>± ---</td> <td>± ---</td> </tr> </tbody> </table>		mm	INCH	4 PLACES	± ---	± ---	3 PLACES	± ---	± ---	2 PLACES	± ---	± ---	1 PLACE	± ---	± ---	0 PLACE	± ---	± ---	DRAWN BY: RSTONE 2017/04/07 CHECKED BY: M ZIELINSKI 2017/04/10 APPROVED BY: BWOODMAN 2017/04/11 MATERIAL NO. - DOCUMENT NO. SD-130061-041	TITLE	MINI CHANGE CABLE ASSY FEM, S/E, STD KEY, BLACK STRAIGHT INTERNAL THREAD		SHEET NO. 1 OF 1
			mm	INCH																						
4 PLACES	± ---	± ---																								
3 PLACES	± ---	± ---																								
2 PLACES	± ---	± ---																								
1 PLACE	± ---	± ---																								
0 PLACE	± ---	± ---																								
THIS DRAWING CONTAINS INFORMATION THAT IS PROPRIETARY TO MOLEX INCORPORATED AND SHOULD NOT BE USED WITHOUT WRITTEN PERMISSION																										