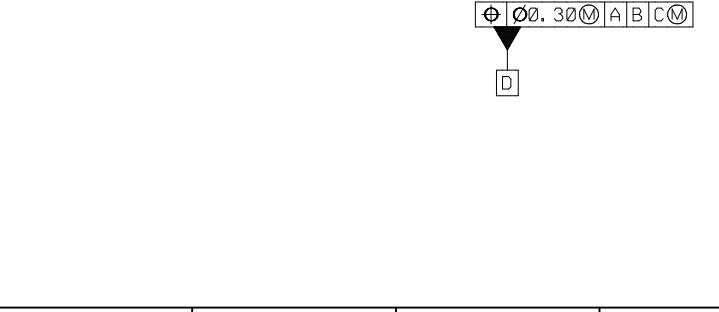
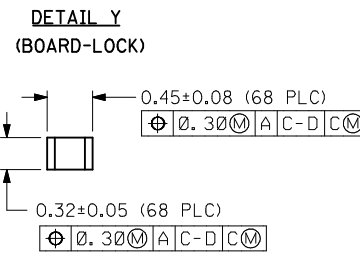
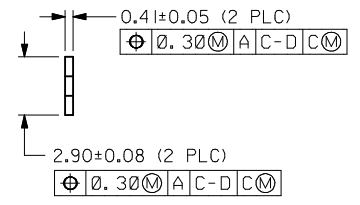
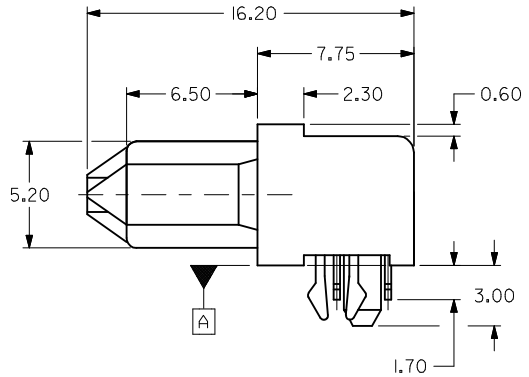
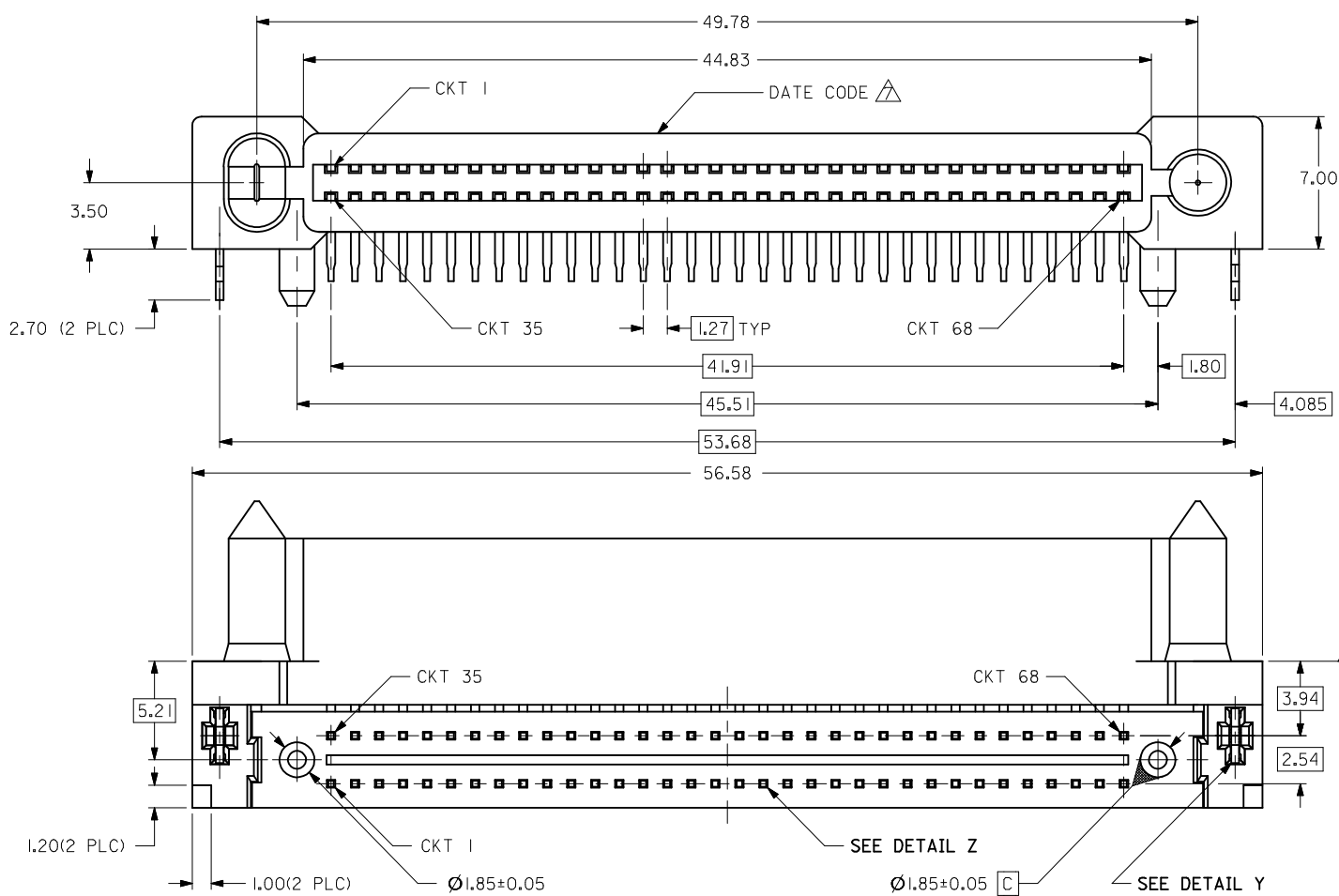
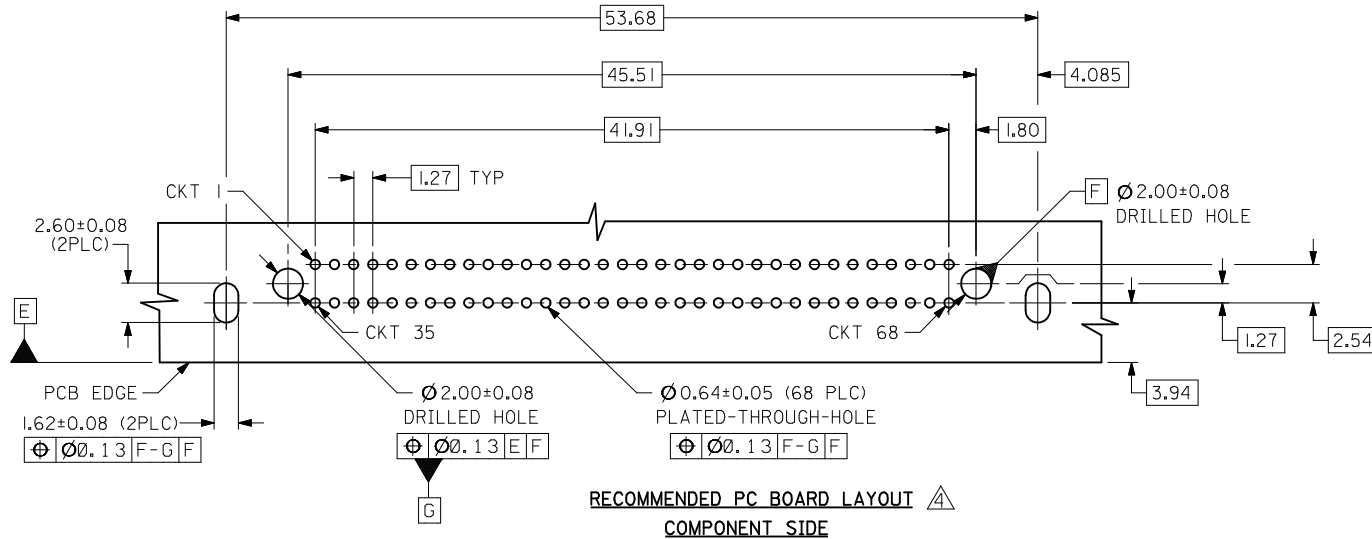


10	9	8	7	6	5	4	3	2	1
PART NO. (PACKED IN CARTON)		CKT SIZE	CONTACTS LUBRICATION						
87537-8872		68	NIL						
87537-8873 $\triangle$		68	YES						



OBS EC NO: S2006-0729 DRWING: MLONG CHKD: SHONG APPR: KCLING	REV DESCRIPTION	QUALITY SYMBOLS	GENERAL TOLERANCES (UNLESS SPECIFIED)		DIMENSION STYLE		SCALE	DESIGN UNITS	THIRD ANGLE PROJECTION		
		$\nabla=0$	mm	INCH	MM ONLY		NTS	METRIC			
		$\sphericalangle=0$	4 PLACES	± ---	± ---	DRAWN BY	DATE	TITLE			
			3 PLACES	± ---	± ---	KSEE	2002/12/12	EBBI, RECEPTACLE, CONN. 1.27MM CTR, 68 CKTS, BTB B/MATE, 3.50MM HT., R/A			
	2 PLACES	± 0.25	± ---	CHECKED BY	DATE	MOLEX INCORPORATED					
	1 PLACE	± ---	± ---	KCLING	2003/01/08	MATERIAL NO. SD-87537-022					
		ANGULAR ± 3 °		APPROVED BY	DATE	SHEET NO. 1 OF 2					
		DRAFT WHERE APPLICABLE MUST REMAIN WITHIN DIMENSIONS		SKTOH	2003/01/09	THIS DRAWING CONTAINS INFORMATION THAT IS PROPRIETARY TO MOLEX INCORPORATED AND SHOULD NOT BE USED WITHOUT WRITTEN PERMISSION					
				SIZE	A3						



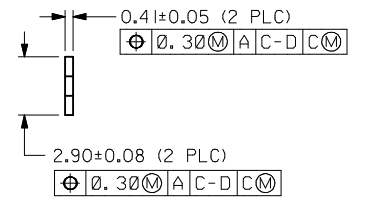
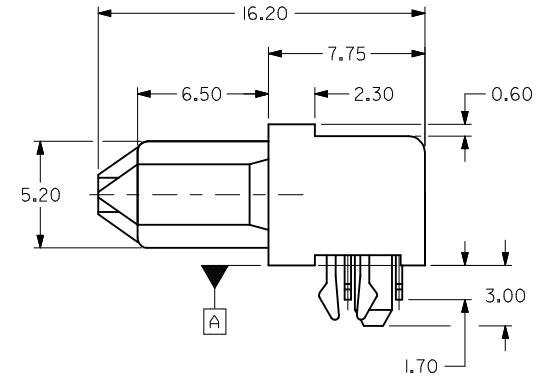
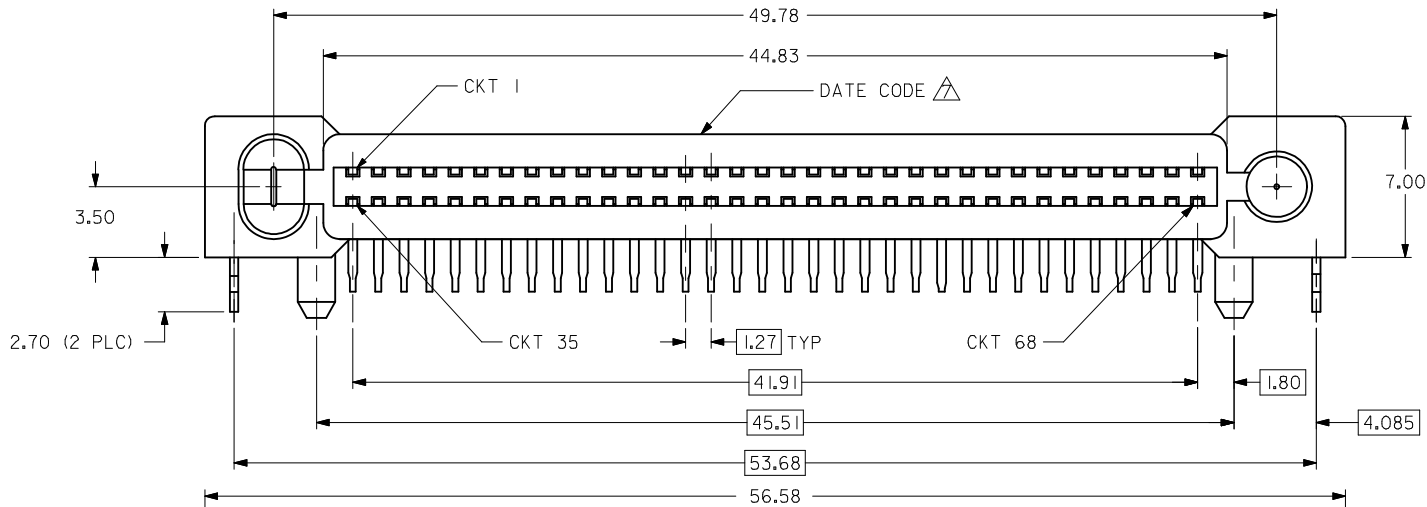
**RECOMMENDED PC BOARD LAYOUT** **COMPONENT SIDE**

**NOTES:**

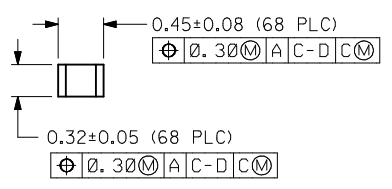
- 1 MATERIALS:  
HOUSING - HIGH TEMPERATURE THERMOPLASTIC, GLASS FILLED,  
UL94V-0, COLOR : BLACK  
TERMINAL - COPPER ALLOY
- 2 PLATING:  
0.76µM MIN. GOLD IN SELECTIVE CONTACT AREA AND  
2.54µM MIN. TIN IN SOLDER TAIL AREA, BOTH  
OVER 1.27µM MIN. NICKEL.
- 3. PRODUCT SPECIFICATION : PS-87537-0001
- RECOMMENDED P.C. BOARD THICKNESS IS 1.40+/-0.05MM.
- 5 CIRCUIT #58 TO BE RECESSED 0.50mm BEHIND  
ALL OTHER CONTACTS.
- PART IS LUBRICATED AT TERMINAL CONTACTS TO MINIMISE  
UNMATE FORCE.
- DATE CODE SHALL BE LASER PRINTED ON HOUSING SURFACE  
AS YYDDD(YY-YEAR, DDD-DAYS) AND LOCATED APPROXIMATELY  
AS SHOWN.

OBS TIN/LEAD P/N EC NO: S2006-0729 DRWN:MLONG 2006/02/27 CHKD:SHONG 2006/02/27 APPR:KCLING 2006/02/28	DESCRIPTION REV	QUALITY SYMBOLS	GENERAL TOLERANCES (UNLESS SPECIFIED)	DIMENSION STYLE	SCALE	DESIGN UNITS	THIRD ANGLE PROJECTION
		= 0 = 0	mm      INCH 4 PLACES ± --- ± --- 3 PLACES ± --- ± --- 2 PLACES ± 0.25 ± --- 1 PLACE ± --- ± --- ANGULAR ± 3 °	MM ONLY	NTS	METRIC	
				DRAWN BY: KSEE      DATE: 2002/12/12	TITLE: EBBI, RECEPTACLE, CONN. 1.27MM CTR, 68 CKTS, BTB B/MATE, 3.50MM HT., R/A		
				CHECKED BY: KCLING      DATE: 2003/01/08	APPROVED BY: SKTOH      DATE: 2003/01/09		
			DRAFT WHERE APPLICABLE MUST REMAIN WITHIN DIMENSIONS	MATERIAL NO. SEE TABLE	DOCUMENT NO. SD-87537-022	SHEET NO. 2 OF 2	
				SIZE: A3	THIS DRAWING CONTAINS INFORMATION THAT IS PROPRIETARY TO MOLEX INCORPORATED AND SHOULD NOT BE USED WITHOUT WRITTEN PERMISSION		

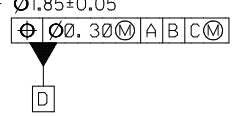
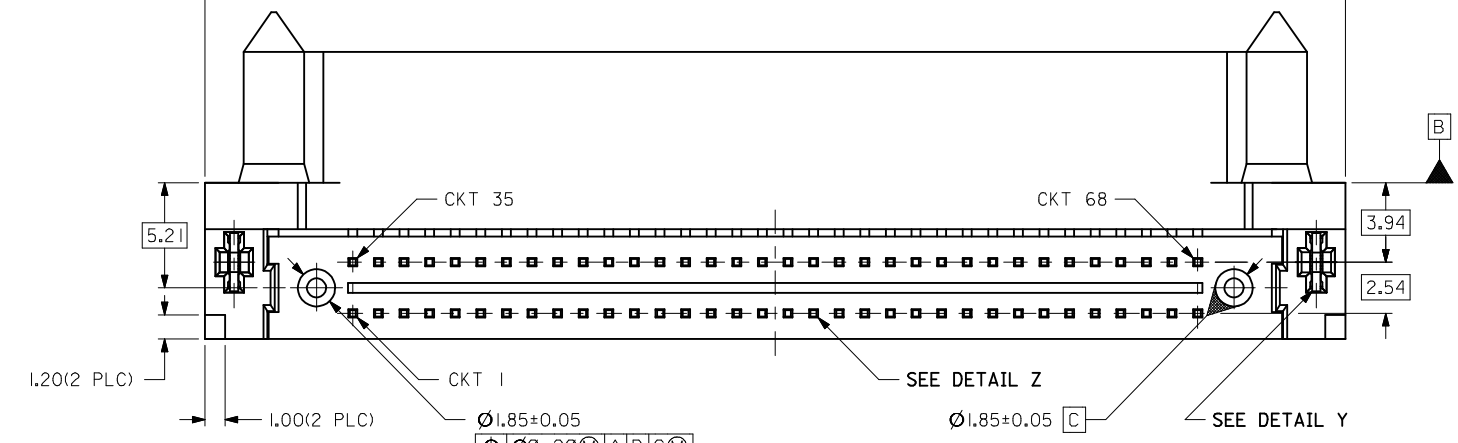
10	9	8	7	6	5	4	3	2	1
PART NO. (PACKED IN CARTON)		CKT SIZE	CONTACTS LUBRICATION						
87537-8872		68	NIL						
87537-8873 $\triangle$		68	YES						



**DETAIL Y**  
(BOARD-LOCK)



**DETAIL Z**  
(TERMINAL)



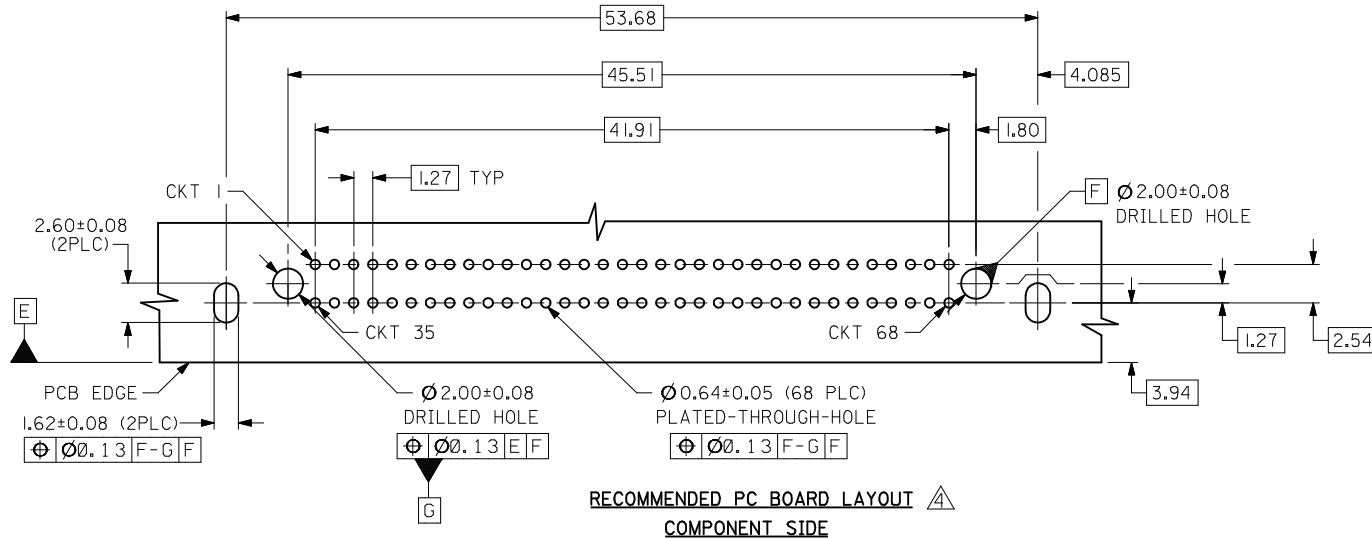
OBS EC NO: S2006-0729 DRW:MLONG CHKD:SHONG APPR:KCLING	2006/02/27	DESCRIPTION
	2006/02/27	
	2006/02/28	
	2006/02/28	

QUALITY SYMBOLS	GENERAL TOLERANCES (UNLESS SPECIFIED)
$\nabla=0$	mm
$\triangleleft=0$	INCH

4 PLACES	± ---	± ---
3 PLACES	± ---	± ---
2 PLACES	± 0.25	± ---
1 PLACE	± ---	± ---
ANGULAR ± 3 °		
DRAFT WHERE APPLICABLE MUST REMAIN WITHIN DIMENSIONS		

DIMENSION STYLE MM ONLY	
DRAWN BY KSEE	DATE 2002/12/12
CHECKED BY KCLING	DATE 2003/01/08
APPROVED BY SKTOH	DATE 2003/01/09
MATERIAL NO. SEE TABLE	
SIZE A3	THIS DRAWING CONTAINS INFORMATION THAT IS PROPRIETARY TO MOLEX INCORPORATED AND SHOULD NOT BE USED WITHOUT WRITTEN PERMISSION

SCALE NTS	DESIGN UNITS METRIC	THIRD ANGLE PROJECTION
TITLE EBBI, RECEPTACLE, CONN. 1.27MM CTR, 68 CKTS, BTB B/MATE, 3.50MM HT., R/A		
MOLEX MOLEX INCORPORATED		SHEET NO. 1 OF 2
DOCUMENT NO. SD-87537-022		



NOTES:

- 1 MATERIALS:  
HOUSING - HIGH TEMPERATURE THERMOPLASTIC, GLASS FILLED,  
UL94V-0, COLOR : BLACK  
TERMINAL - COPPER ALLOY
- 2 PLATING:  
0.76µM MIN. GOLD IN SELECTIVE CONTACT AREA AND  
2.54µM MIN. TIN IN SOLDER TAIL AREA, BOTH  
OVER 1.27µM MIN. NICKEL.
3. PRODUCT SPECIFICATION : PS-87537-0001
- △ RECOMMENDED P.C. BOARD THICKNESS IS 1.40+/-0.05MM.
- 5 CIRCUIT #58 TO BE RECESSED 0.50mm BEHIND  
ALL OTHER CONTACTS.
- △ PART IS LUBRICATED AT TERMINAL CONTACTS TO MINIMISE  
UNMATE FORCE.
- △ DATE CODE SHALL BE LASER PRINTED ON HOUSING SURFACE  
AS YYDDD(YY-YEAR, DDD-DAYS) AND LOCATED APPROXIMATELY  
AS SHOWN.

OBS TIN/LEAD P/N EC NO: S2006-0729 DRWN:MLONG 2006/02/27 CHKD:SHONG 2006/02/27 APPR:KCLING 2006/02/28	DESCRIPTION	QUALITY SYMBOLS	GENERAL TOLERANCES (UNLESS SPECIFIED)	DIMENSION STYLE	SCALE	DESIGN UNITS	THIRD ANGLE PROJECTION	
		▽=0 ∇=0	mm INCH	MM ONLY	NTS	METRIC		
			4 PLACES ± --- ± --- 3 PLACES ± --- ± --- 2 PLACES ± 0.25 ± --- 1 PLACE ± --- ± ---	DRAWN BY DATE KSEE 2002/12/12	TITLE	EBBI, RECEPTACLE, CONN. 1.27MM CTR, 68 CKTS, BTB B/MATE, 3.50MM HT., R/A		
			ANGULAR ± 3 °	CHECKED BY DATE KCLING 2003/01/08	APPROVED BY DATE SKTOH 2003/01/09			
	DRAFT WHERE APPLICABLE MUST REMAIN WITHIN DIMENSIONS	MATERIAL NO.	DOCUMENT NO.	MOLEX INCORPORATED				
	SIZE A3	SEE TABLE	SD-87537-022				SHEET NO. 2 OF 2	
		THIS DRAWING CONTAINS INFORMATION THAT IS PROPRIETARY TO MOLEX INCORPORATED AND SHOULD NOT BE USED WITHOUT WRITTEN PERMISSION						