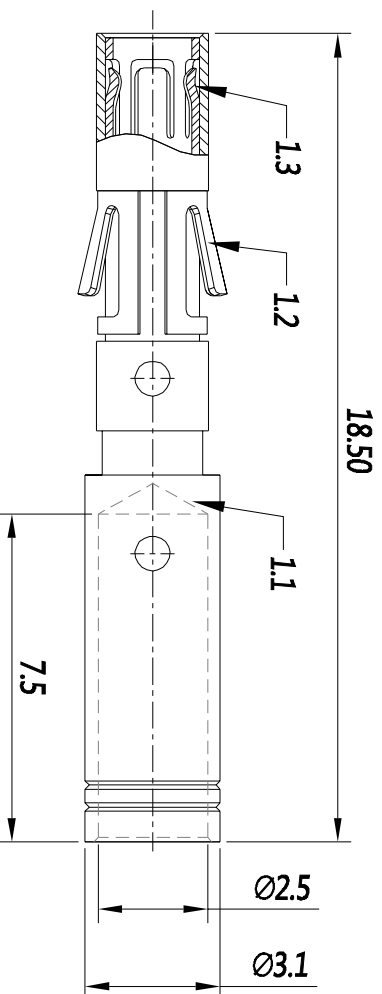


REVISIONS				
REV	ECO	DESCRIPTION	DATE	BY APPR
B1	-	RELEASED DRAWING	JULY-1-2014	BEN TOMMY



P/N	CONTACT PLATING(MATING AREA)
MS14M23T	TIN PLATING OVER NICKEL.
MS14M23S	SILVER PLATING OVER NICKEL.
MS14M23F	GOLD FLASH PLATING OVER NICKEL.
MS14M23G10	10µ" GOLD PLATING OVER NICKEL.
MS14M23G15	15µ" GOLD PLATING OVER NICKEL.
MS14M23G30	30µ" GOLD PLATING OVER NICKEL.

- NOTES : (UNLESS OTHERWISE SPECIFIED)
- MATERIAL :
 - CONTACT BODY : COPPER ALLOY.
 - POSITIONING CLIP : COPPER ALLOY.
 - CROWN CONTACTS : COPPER ALLOY.
 - SPECIFICATIONS :
 - CURRENT RATING : 13A(MAX).
 - TERMINATION TYPE : CRIMPING.
 - WIRE RANGE : 16~14AWG.
 - SUITABLE SOCKET TYPE : MP14M23XX.
 - ROHS COMPLIANT.
 - ALL DIMENSIONS ARE FOR REFERENCE USE ONLY.

QUANTITY	PART NUMBER	DESCRIPTION	ITER
MATERIALS LIST			
UNLESS OTHERWISE SPECIFIED			
1) All dimensions are in millimeters.			
2) Tolerances are as follows:			
1 Pt. DEC 2d 20			
2 Pt. DEC 2d 20			
3 Pt. DEC 2d 20			
3) Note reference =			
MATERIAL SPECIFICATIONS:		CUSTOMER:	
PROCESS SPECIFICATIONS:		HAS DRAWING BE SUPPLIED FOR SPECIFICATIONS AND PERFORMANCE DATA. THE DRAWING FOR THE PART NUMBER IS THE FINAL DESIGN. ALL DIMENSIONS OF REPRODUCTION ARE LAYERS. ALL MANUFACTURING VARIATION.	
NEXT ASST:		SCALE: NONE	

Amphenol

Sine Systems - www.amphenol-sine.com
 44724 Morley Drive
 Clinton Township, MI 48038

ECO-MATE SOCKET CONTACT
 MACHINE, 16-14AWG, SIZE 16

SIZE	TYPE	DWG NO.	REVISION
B	C-	MS14M23XX	B1
SCALE	NONE	SHEET	1 OF 1