

4

3

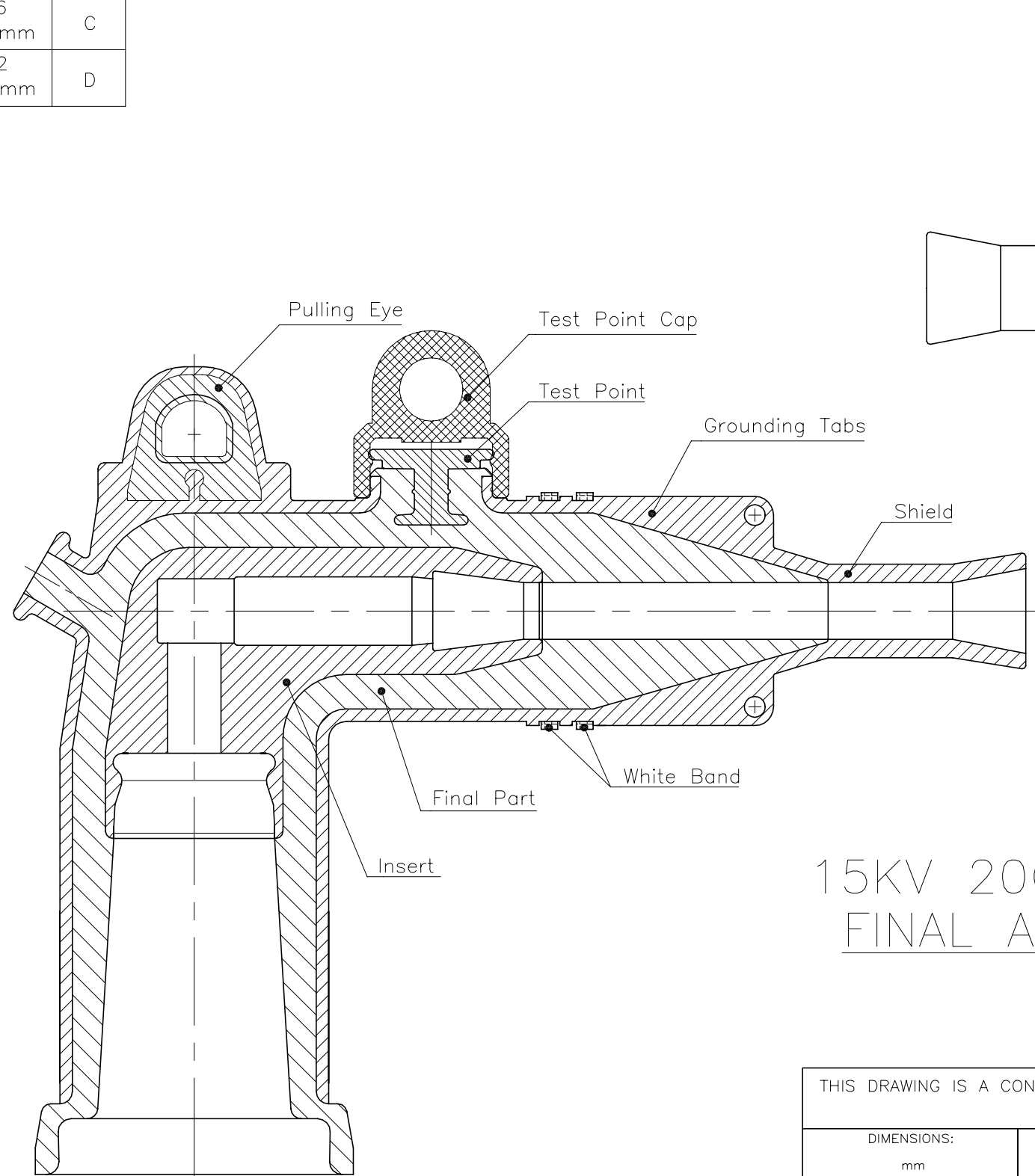
2

1

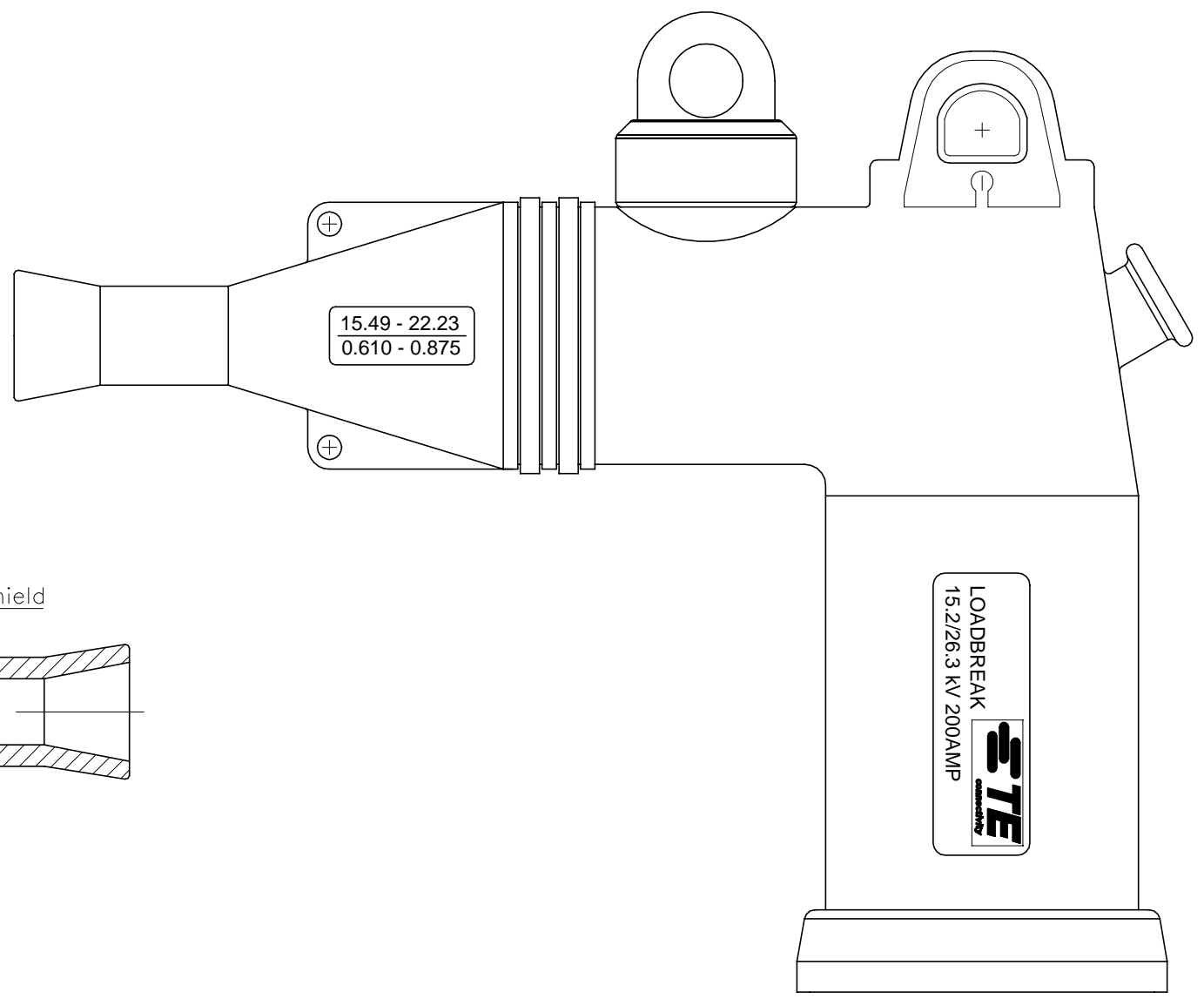
© - TE Connectivity. All Rights Reserved.


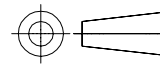
| USE RANGE | SIZE |
|-----------------------------|------|
| 0.575-0.74 [14.6-18.8]mm | A |
| 0.64-0.905 [16.2-23.0]mm | B |
| 0.83-1.06 [21.1-26.9]mm | C |
| 0.93-1.22 [23.6-31.0]mm | D |

| REVISIONS | | | | |
|-----------|-----|-------------|-----------|-------|
| P | LTR | DESCRIPTION | DATE | APVD |
| 1 | | NEW DRAWING | 12MAY2020 | KR JV |



15KV 200A ELBOW FINAL ASSEMBLY



| | | | | |
|---|--|----------------------------------|---|-----------|
| THIS DRAWING IS A CONTROLLED DOCUMENT. | | DWN 12MAY2020 RAGHAVENDRA K. |  TE Connectivity | |
| DIMENSIONS: mm | | CHK 12MAY2020 VALENCIA, JORDI | | |
|  | | APVD 12MAY2020 RIVA, CARLOS | NAME 15kV LOADBREAK ELBOW ELB-15-200 | |
| TOLERANCES UNLESS OTHERWISE SPECIFIED: | | PRODUCT SPEC | RESTRICTED TO | |
| 0 PLC ± - | | APPLICATION SPEC | SIZE | CAGE CODE |
| 1 PLC ± - | | WEIGHT | A3 | 00779 |
| 2 PLC ± - | | CUSTOMER DRAWING | DRAWING NO ELB-15-200 | |
| 3 PLC ± - | | SCALE | SHEET | |
| 4 PLC ± - | | NTS | 1 of 2 | |
| ANGLES ± - | | REV | 1 | |
| FINISH | | | | |

ELB-15-210 Load break

| REVISIONS | | | | |
|-----------|-----|-------------|------|------|
| P | LTR | DESCRIPTION | DATE | APVD |
| - | - | SEE SHEET 1 | - | - |

Ordering Formula


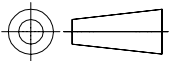
| | | | | |
|---------|---|---|---|---|
| ELB-15- | 1 | 2 | 3 | 4 |
|---------|---|---|---|---|

| | | |
|-----|------------------------------|-----------------|
| 1 | CURRENT RATING | TEST POINT CODE |
| 200 | = 200 AMP WITHOUT test point | |
| 210 | = 210 AMP WITH test point | |

| | |
|-------|----------------------|
| 4 | Jacket Sealing |
| Code | Type |
| Blank | No Jacket Seal |
| ES | Integral Jacket Seal |

| | | |
|------|----------------------------|-------------|
| 2 | Cable Insulator O.D. Range | |
| Code | Inches | mm |
| A | .575 - .740 | 14.6 - 18.8 |
| B | .640 - .905 | 16.2 - 23.0 |
| C | .830 - 1.060 | 21.1 - 26.9 |
| D | .930 - 1.220 | 23.6 - 31.0 |

| | | | |
|------|--|---------|-------|
| 3 | Compression Lugs Conductor Size (Aluminum or Copper) | | |
| Code | Str/ Comp | Compact | Solid |
| 3 | 3 | 2 | 2 |
| 2 | 2 | 1 | 1 |
| 1 | 1 | 1/0 | 1/0 |
| 10 | 1/0 | 2/0 | 2/0 |
| 20 | 2/0 | 3/0 | 3/0 |
| 30 | 3/0 | 4/0 | 4/0 |
| 40 | 4/0 | 250 | 250 |

| | | | | |
|---|--|--|---|---------------|
| THIS DRAWING IS A CONTROLLED DOCUMENT. | | DWN 12MAY2020 RAGHAVENDRA K. |  TE Connectivity | |
| | | CHK 12MAY2020 VALENCIA, JORDI | | |
| | | APVD 12MAY2020 RIVA, CARLOS | NAME 15kV LOADBREAK ELBOW ELB-15-200 | |
| DIMENSIONS: mm | | TOLERANCES UNLESS OTHERWISE SPECIFIED: | | RESTRICTED TO |
|  | | 0 PLC ± - | | SIZE |
| | | 1 PLC ± - | | CAGE CODE |
| | | 2 PLC ± - | | DRAWING NO |
| | | 3 PLC ± - | | A3 00779 |
| | | 4 PLC ± - | | ELB-15-200 |
| | | ANGLES ± - | | SCALE |
| MATERIAL | | FINISH | | NTS |
| | | | | SHEET |
| | | | | 2 of 2 |
| | | | | REV |
| | | | | 1 |
| CUSTOMER DRAWING | | | | |