

# DT04-12PA-P026 ✓ ACTIVE

DEUTSCH | DEUTSCH DT

TE Internal #: DT04-12PA-P026

Housing for Male Terminals, Bus Bar-to-Wire, 12 Position, .359 in [9.12 mm] Centerline, Sealable, Gray, Wire & Cable / Bus Bar, DEUTSCH DT

[View on TE.com >](#)



Connectors > Automotive Connectors > Automotive Housings > DEUTSCH DT Receptacle Connectors



Connector & Housing Type: **Housing for Male Terminals**

Mating Pin Diameter: **1.59 mm [ .063 in ]**

Connector System: **Bus Bar-to-Wire**

Number of Positions: **12**

Centerline (Pitch): **9.12 mm [ .359 in ]**

[All DEUTSCH DT Receptacle Connectors \(241\)](#)

## Features

### Product Type Features

|                                   |                            |
|-----------------------------------|----------------------------|
| Connector Shape                   | Rectangular                |
| Connector & Housing Type          | Housing for Male Terminals |
| Connector System                  | Bus Bar-to-Wire            |
| Sealable                          | Yes                        |
| Hybrid Connector                  | No                         |
| Primary Locking Feature           | Integrated in Housing      |
| Connector & Contact Terminates To | Bus Bar, Wire & Cable      |

### Configuration Features

|                        |                  |
|------------------------|------------------|
| Blank Cavity Position  | 0                |
| Connector Modification | (2) 6 Pin Busses |
| Number of Positions    | 12               |
| Number of Rows         | 2                |

### Electrical Characteristics

|                              |                  |
|------------------------------|------------------|
| Operating Voltage            | 250 VAC          |
| Nominal Voltage Architecture | 12 V, 24 V, 48 V |

### Body Features

|                  |      |
|------------------|------|
| Cable Exit Angle | 180° |
|------------------|------|



|                       |      |
|-----------------------|------|
| Primary Product Color | Gray |
|-----------------------|------|

|                         |   |
|-------------------------|---|
| Connector & Keying Code | A |
|-------------------------|---|

### Contact Features

|              |     |
|--------------|-----|
| Contact Type | Pin |
|--------------|-----|

|                     |                  |
|---------------------|------------------|
| Mating Pin Diameter | 1.59 mm[.063 in] |
|---------------------|------------------|

|                              |      |
|------------------------------|------|
| Contact Current Rating (Max) | 13 A |
|------------------------------|------|

### Mechanical Attachment

|                             |     |
|-----------------------------|-----|
| Terminal Position Assurance | Yes |
|-----------------------------|-----|

|               |                  |
|---------------|------------------|
| Strain Relief | Add By Accessory |
|---------------|------------------|

|                       |       |
|-----------------------|-------|
| Mating Alignment Type | Keyed |
|-----------------------|-------|

|                  |      |
|------------------|------|
| Mating Alignment | With |
|------------------|------|

|                         |               |
|-------------------------|---------------|
| Connector Mounting Type | Bus Bar Mount |
|-------------------------|---------------|

### Housing Features

|                  |       |
|------------------|-------|
| Housing Material | PA GF |
|------------------|-------|

|                    |                  |
|--------------------|------------------|
| Centerline (Pitch) | 9.12 mm[.359 in] |
|--------------------|------------------|

### Dimensions

|                  |                   |
|------------------|-------------------|
| Connector Height | 22.25 mm[.876 in] |
|------------------|-------------------|

|               |                    |
|---------------|--------------------|
| Product Width | 40.56 mm[1.597 in] |
|---------------|--------------------|

|                |                    |
|----------------|--------------------|
| Product Length | 51.89 mm[2.043 in] |
|----------------|--------------------|

|                    |                  |
|--------------------|------------------|
| Row-to-Row Spacing | 4.45 mm[.175 in] |
|--------------------|------------------|

### Usage Conditions

|                             |                |
|-----------------------------|----------------|
| Operating Temperature (Max) | 125 °C[257 °F] |
|-----------------------------|----------------|

|                             |                            |
|-----------------------------|----------------------------|
| Operating Temperature Range | -55 – 125 °C[-67 – 257 °F] |
|-----------------------------|----------------------------|

### Operation/Application

|                     |                |
|---------------------|----------------|
| Circuit Application | Power & Signal |
|---------------------|----------------|

### Industry Standards

|                      |              |
|----------------------|--------------|
| Degree of Protection | IP68, IP6K9K |
|----------------------|--------------|

|                 |           |
|-----------------|-----------|
| Agency/Standard | SAE J2030 |
|-----------------|-----------|

|                        |            |
|------------------------|------------|
| UL Flammability Rating | Not tested |
|------------------------|------------|

### Packaging Features

|                    |     |
|--------------------|-----|
| Packaging Quantity | 250 |
|--------------------|-----|



Packaging Method Box

**Other**

Serviceable Yes

Connector Position Assurance Capable No

**Product Compliance**

[For compliance documentation, visit the product page on TE.com>](#)

EU RoHS Directive 2011/65/EU Compliant

EU ELV Directive 2000/53/EC Compliant

China RoHS 2 Directive MIIT Order No 32, 2016 No Restricted Materials Above Threshold

EU REACH Regulation (EC) No. 1907/2006 Current ECHA Candidate List: JAN 2023 (233)  
Candidate List Declared Against: JAN 2023 (233)  
Does not contain REACH SVHC

Halogen Content Not Low Halogen - contains Br or Cl > 900 ppm.

Solder Process Capability Not reviewed for solder process capability

**Product Compliance Disclaimer**

This information is provided based on reasonable inquiry of our suppliers and represents our current actual knowledge based on the information they provided. This information is subject to change. The part numbers that TE has identified as EU RoHS compliant have a maximum concentration of 0.1% by weight in homogenous materials for lead, hexavalent chromium, mercury, PBB, PBDE, DBP, BBP, DEHP, DIBP, and 0.01% for cadmium, or qualify for an exemption to these limits as defined in the Annexes of Directive 2011/65/EU (RoHS2). Finished electrical and electronic equipment products will be CE marked as required by Directive 2011/65/EU. Components may not be CE marked. Additionally, the part numbers that TE has identified as EU ELV compliant have a maximum concentration of 0.1% by weight in homogenous materials for lead, hexavalent chromium, and mercury, and 0.01% for cadmium, or qualify for an exemption to these limits as defined in the Annexes of Directive 2000/53/EC (ELV). Regarding the REACH Regulation, the information TE provides on SVHC in articles for this part number is based on the latest European Chemicals Agency (ECHA) 'Guidance on requirements for substances in articles' posted at this URL: <https://echa.europa.eu/guidance-documents/guidance-on-reach>

**Compatible Parts**



TE Part # CAT-D487-P729  
Dust Caps — DEUTSCH DT



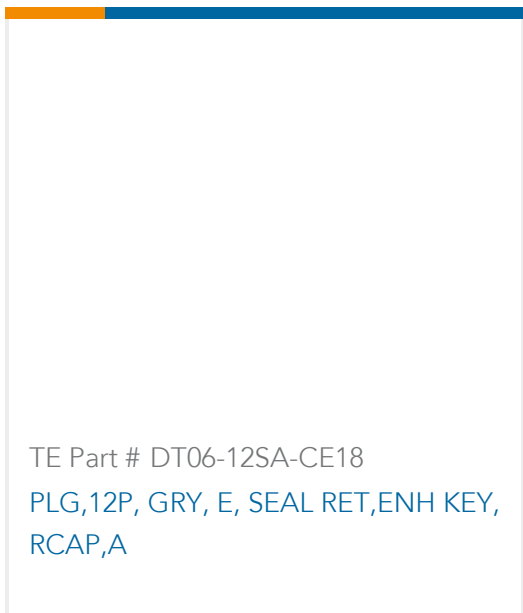
TE Part # CAT-J41-DDPC  
DEUTSCH DT Plug Connectors



TE Part # CAT-D487-M8649  
DEUTSCH DT Mounting Clips



TE Part # 1924487-2  
MOUNTING CLIP, AMPSEAL 16

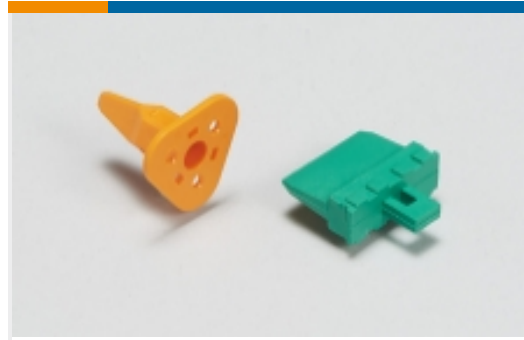


TE Part # DT06-12SA-CE18  
PLG, 12P, GRY, E, SEAL RET, ENH KEY,  
RCAP, A

## Also in the Series | DEUTSCH DT



Automotive Connector Caps & Covers  
(107)



Automotive Connector Locks &  
Position Assurance (74)



Automotive Housings (618)



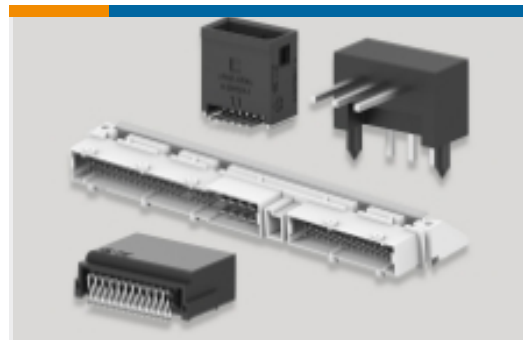
Automotive Seals & Cavity Plugs (5)



Insertion & Extraction Tools (3)

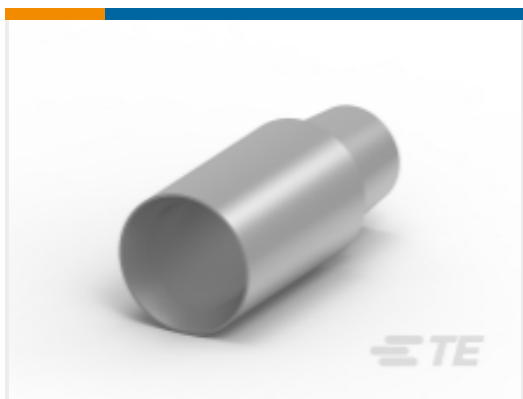


Other Automotive Connector  
Accessories (16)



PCB Headers & Receptacles (102)

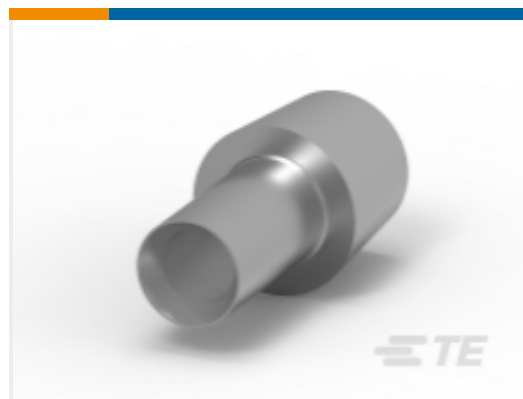
## Customers Also Bought



TE Part #HC5936  
BATTERY LEAD CONN. 70mm +VE



TE Part #DT04-12PA-P021  
DEUTSCH DT Receptacle Connectors



TE Part #HC5728  
LEAD CONNECTOR 16MM



TE Part #HC5840D  
INTEGRAL BATT. POST. DOUBLE  
TAPER.



TE Part #HC5841  
70MM2 BATTERY CLMP ASSMB  
NEGATIVE



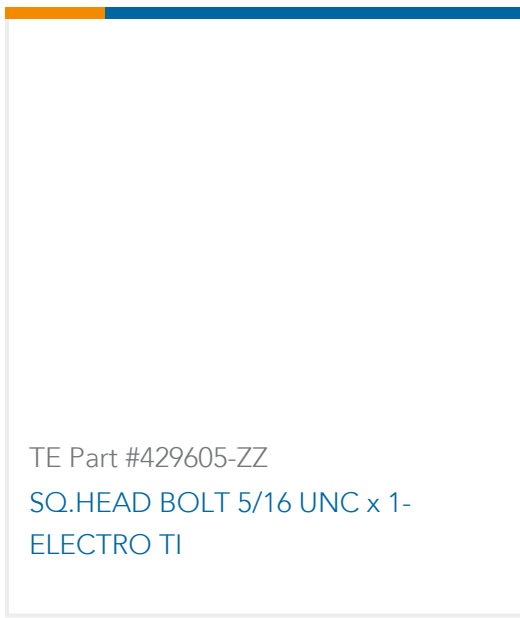
TE Part #DT04-12PA-930C  
REC, 12P, BLK, N, SEALED FLANGE, A



TE Part #5-1393304-5  
V23134M0000M000



TE Part #429604-ZZ  
5/16 UNC HEXAGON NUT ELECTRO  
TIN P



## Documents

### Product Drawings

[REC, 12P, GRY, BUSBAR 2X6, NICKEL, A](#)

English

### CAD Files

[3D PDF](#)

3D

Customer View Model

[ENG\\_CVM\\_CVM\\_DT04-12PA-P026\\_A.2d\\_dxf.zip](#)

English

Customer View Model

[ENG\\_CVM\\_CVM\\_DT04-12PA-P026\\_A.3d\\_igs.zip](#)

English

Customer View Model

[ENG\\_CVM\\_CVM\\_DT04-12PA-P026\\_A.3d\\_stp.zip](#)

English

By downloading the CAD file I accept and agree to the [Terms and Conditions](#) of use.

### Datasheets & Catalog Pages

[ICT Terminals and Connectors Catalogue](#)

English

[CONNECTOR SELECTOR](#)

English

### Product Specifications

[Application Specification](#)

English