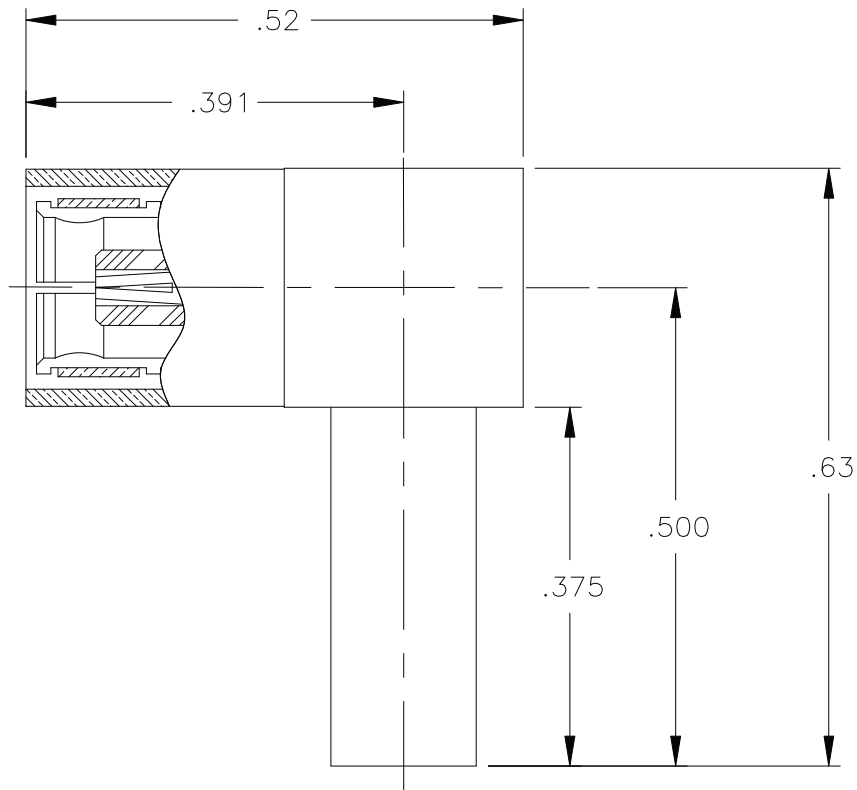


2105-7521-002

| REVISIONS |                 |          |          |
|-----------|-----------------|----------|----------|
| REV       | DESCRIPTION     | DATE     | APPROVED |
| -         | INITIAL RELEASE | 01/16/98 | D.N.     |




NOTES: CONFORMS TO MIL-PRF-39012 SMB SERIES

MATERIAL:

- INSULATORS = TEFLON, VIRGIN WHITE PER ASTM D1710, GRADE 1, TYPE I, CLASS A.
- CONTACT & SPRING = BERYLLIUM COPPER PER ASTM B196, ALLOY C17300, TEMPER TD04.
- CRIMP SLEEVE = SEAMLESS COPPER TUBE PER ASTM B75, TYPE C12000, TEMPER: LIGHT ANNEAL O50.
- ALL OTHER METAL PARTS = BRASS PER ASTM B16, ALLOY C36000, TEMPER H02.

FINISHES:

- CONTACT = GOLD PLATE PER MIL-G-45204, TYPE II, CLASS 1, GRADE C, OVER .00010 TO .00020 STRESS FREE SULFAMATE NICKEL PER QQ-N-290.
- ALL OTHER METAL PARTS = NICKEL PLATE PER QQ-N-290, CLASS 1, GRADE G, EXCEPT .0001 - .0002 THK. OVER .00005 - .0001 THK. COPPER PER MIL-C-14550.

|   |      |                       |                             |              |  |
|---|------|-----------------------|-----------------------------|--------------|--|
| UNLESS OTHERWISE SPECIFIED DIMENSIONS ARE IN INCHES TOLERANCES ON |      |                       | DWN: DATE<br>D.N. 01/15/98  |              |  <b>APPLIED ENGINEERING PRODUCTS</b><br>104 John W. Murphy Dr.<br>New Haven, CT 06513 |
| DECIMAL   | FRAC | ANGLE                 | CHKD: DATE<br>C.T. 01/16/98 |              |  |
|   | 1/64 | ±2°                   | APVD: DATE<br>M.S. 01/16/98 |              |  |
| MATERIAL:<br>SEE NOTES  |      |                       | FINISH:<br>SEE NOTES        |              | SMB FEMALE RIGHT ANGLE<br>CABLE PLUG, FOR USE<br>WITH RG-178 & 196 CABLE   |
| SIZE<br>A   |      | FSCM NO.<br>19505     | DWG NO.<br>2105-7521-002    |              | REV<br>-   |
| SCALE 5:1   |      | CADFILE 2105-7521-002 |                             | SHEET 1 OF 1 |  |

2105-7521-002