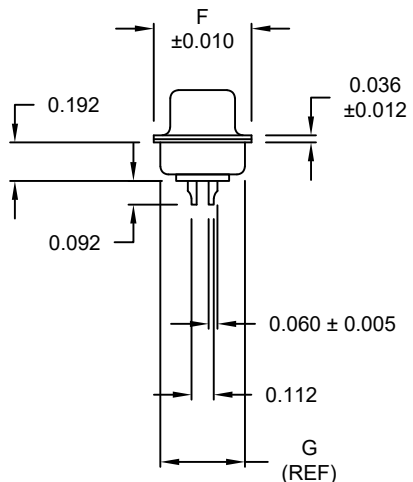
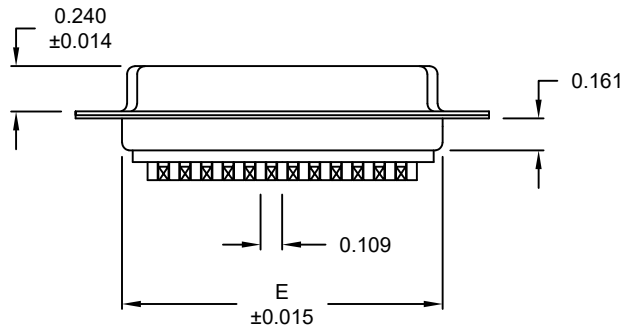
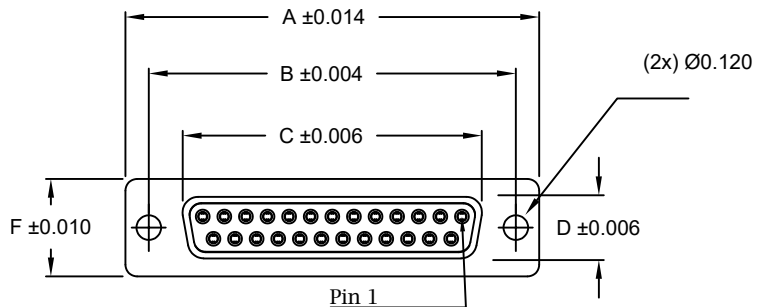


WILL ACCEPT 26-20 AWG WIRE



**MATERIAL:**

SHELL: STEEL, NICKEL PLATED  
 INSULATOR: PA6T, UL94 V-0  
 PROCESS TEMP.: 260°C  
 CONTACT: BRASS

**ELECTRICAL:**

CURRENT RATING: 5 AMPS  
 CONTACT RESISTANCE: 15 mOhms Max.  
 INSULATION RESISTANCE: 1,000 MOhms Min.  
 VOLTAGE: 500VAC FOR 1 MINUTE  
 TEMPERATURE: -50° C TO 100° C

| No. OF PINS | UNITS | DIMENSIONS |       |       |       |       |       |       |
|-------------|-------|------------|-------|-------|-------|-------|-------|-------|
|             |       | A          | B     | C     | D     | E     | F     | G     |
| 9           | inch  | 1.213      | 0.984 | 0.642 | 0.315 | 0.760 | 0.496 | 0.423 |
|             | mm    | 30.80      | 24.99 | 16.30 | 8.00  | 19.30 | 12.60 | 10.75 |
| 15          | inch  | 1.541      | 1.312 | 0.969 | 0.315 | 1.083 | 0.496 | 0.423 |
|             | mm    | 39.15      | 33.32 | 24.60 | 8.00  | 27.51 | 12.60 | 10.75 |
| 25          | inch  | 2.088      | 1.852 | 1.512 | 0.315 | 1.630 | 0.496 | 0.423 |
|             | mm    | 53.04      | 47.04 | 38.40 | 8.00  | 41.40 | 12.60 | 10.75 |
| 37          | inch  | 2.729      | 2.500 | 2.157 | 0.315 | 2.276 | 0.496 | 0.423 |
|             | mm    | 69.32      | 63.50 | 54.80 | 8.00  | 57.81 | 12.60 | 10.75 |
| 50          | inch  | 2.635      | 2.406 | 2.059 | 0.425 | 2.182 | 0.598 | 0.524 |
|             | mm    | 66.93      | 61.11 | 52.30 | 10.80 | 55.42 | 15.20 | 13.30 |

172-YYY-203RYY1

SERIES \_\_\_\_\_  
 POSITIONS \_\_\_\_\_  
 009 \_\_\_\_\_  
 015 \_\_\_\_\_  
 025 \_\_\_\_\_  
 037 \_\_\_\_\_  
 050 \_\_\_\_\_  
 GENDER \_\_\_\_\_  
 2 = FEMALE  
 TERMINATION \_\_\_\_\_  
 0 = SOLDER CUP  
 SHELL PLATING \_\_\_\_\_  
 3 = NICKEL  
 HARDWARE OPTIONS \_\_\_\_\_  
 00 = NO HARDWARE  
 01 = .098" CLINCH NUT (SOLDER SIDE)  
 02 = .236" CLINCH NUT (SOLDER SIDE)  
 03 = .236" CLINCH NUT (MATING SIDE)  
 05 = .237" 4-40 BOARD LOCK  
 91 = .237" 4-40 SPACER/ BOARD LOCK  
 PLATING OPTIONS \_\_\_\_\_  
 1 = GOLD FLASH  
 2 = 30MICRO-INCH GOLD

RoHS COMPLIANT

UNITS = inch

DO NOT SCALE FROM DRAWING



THESE DRAWINGS AND SPECIFICATIONS ARE THE PROPERTY OF NorComp AND SHALL NOT BE REPRODUCED, COPIED OR USED AS THE BASIS FOR THE MANUFACTURE OR SALE OF APPARATUS WITHOUT WRITTEN PERMISSION.

DRAWN: P. JENKINS  
 DATE: 08/24/1998

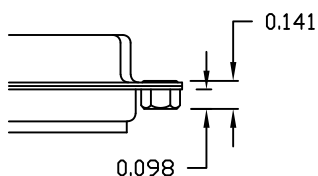
NorComp

SCALE: NTS SHEET 1 OF 2 REV 17  
 DWG NO. 172-YYY-203RYY1

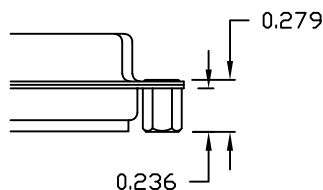
**TOLERANCE:**  
 ALL DIMENSIONS ARE  $\pm 0.010$   
 UNLESS OTHERWISE  
 SPECIFIED

ALL CLINCH-NUTS ARE 4-40 INTERNAL THREADS

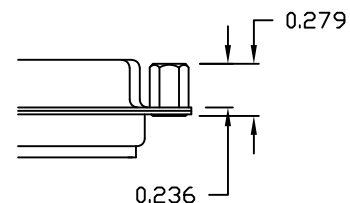
"01" // SOLDER SIDE



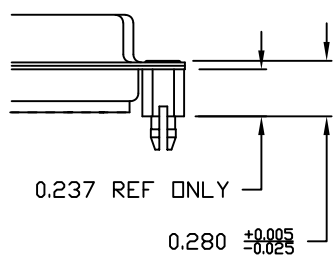
"02" // SOLDER SIDE



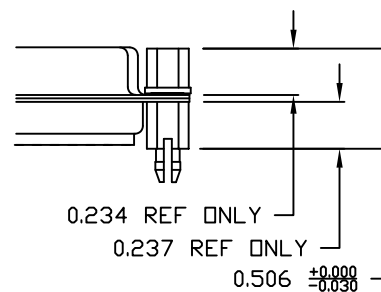
"03" // MATING SIDE



"05" // PCB SIDE



"91" // PCB SIDE



NOTE: 4-40 FEMALE SCREW LOCK IS REMOVABLE

RoHS COMPLIANT

UNITS = inch

DO NOT SCALE FROM DRAWING



THESE DRAWINGS AND SPECIFICATIONS ARE THE PROPERTY OF NorComp AND SHALL NOT BE REPRODUCED, COPIED OR USED AS THE BASIS FOR THE MANUFACTURE OR SALE OF APPARATUS WITHOUT WRITTEN PERMISSION.

DRAWN:  
 P. JENKINS

DATE:  
 08/24/1998

**NorComp**

SCALE:  
 NTS

SHEET OF  
 2 2

REV  
 17

DWG NO.

172-YYY-203RYY1