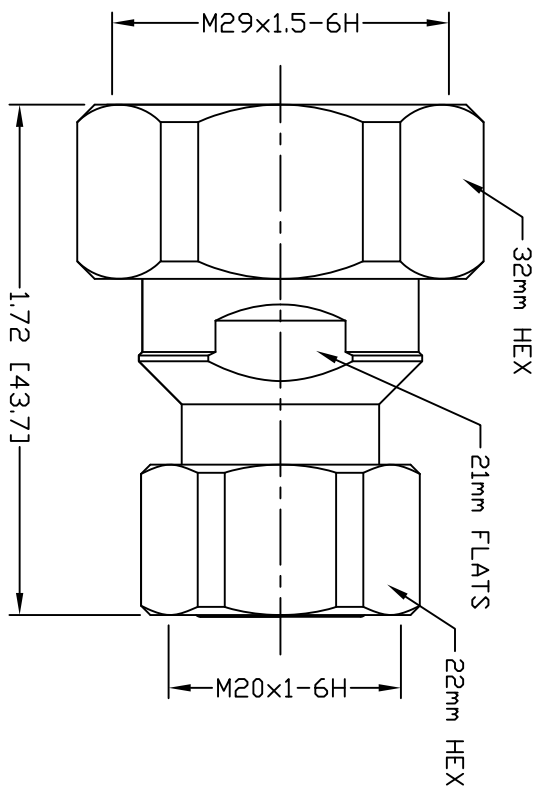


PART NO.		<b>RFD-1686-4</b>		
REV	DESCRIPTION	DWN	DATE	APPROVED
A	UPDATED ELECTRICAL SPECS	CZS	06/16/20	JDMc



**SPECIFICATIONS:**

IMPEDANCE: 50 Ohms  
 FREQUENCY RANGE: 0-6 GHz  
 3rd ORDER IM:  $\leq -160\text{dBc}$  (RELATIVE TO CARRIER)  
 3rd ORDER IM TEST METHOD: 2x43dBm CARRIERS  
 VSWR:  $\leq 1.15:1$   
 DIELECTRIC WITHSTANDING VOLTAGE: 2000V/AC  
 INSULATION RESISTANCE: 1000M $\Omega$   
 DC TEST VOLTAGE: 2500V  
 INNER CONTACT RESISTANCE: 1m $\Omega$  MAX  
 OUTER CONTACT RESISTANCE: 1m $\Omega$  MAX  
 COUPLING NUT PROOF TORQUE (7/16 DIN): 35N-m / 25 ft lbs  
 COUPLING NUT PROOF TORQUE 4.3/10: 7N-m / 5 ft lbs  
 AVERAGE POWER, INNER CONDUCTOR TEMPERATURE: 100°C / 212°F  
 OPERATING TEMPERATURE: -40° to +155°  
 INTERFACE DURABILITY: 100 CYCLES  
 REGULATORY COMPLIANCE/CERTIFICATIONS: ROHS/IP68

NOTE: BOTH CONNECTORS WILL HAVE PROTECTIVE CAPS ON

#	DESCRIPTION	QTY	MATERIAL	FINISH
6	RETAINING RING	1	BRASS	WHITE BRONZE
5	COUPLING NUT	1	BRASS	WHITE BRONZE
4	O-RING	1	S.I. RUBBER	RED
3	INSULATOR	1	PTFE	WHITE
2	CONTACT	1	BeCu	SILVER
1	BODY	1	BRASS	WHITE BRONZE

CUSTOMER OUTLINE DRAWING	
ALL DIMENSIONS ARE REFERENCE ONLY	
UNLESS OTHERWISE SPECIFIED: DIMENSIONS ARE IN INCHES AND [MILLIMETERS]	
DRAWN	06/16/20
C. ZUNIGA	
CHECKED	
C. ZUNIGA	
ORD DRAWN	06/22/15
C. ZUNIGA	

**ROHS COMPLIANT**

PROPRIETARY AND CONFIDENTIAL

THIS DRAWING CONTAINS INFORMATION PROPRIETARY TO RF INDUSTRIES. ANY UNAUTHORIZED USE OF THIS DRAWING IS EXPRESSLY PROHIBITED WITHOUT WRITTEN PERMISSION FROM RF INDUSTRIES. ANY VIOLATION IS PUNISHABLE UNDER U.S. COPYRIGHT LAWS.

**RF Connectors**  
 DIVISION OF RF INDUSTRIES, LTD.  
 7610 MIRAMAR RD.  
 SAN DIEGO, CA 92126  
 (858) 549-6340  
 (858) 549-6345 FAX

**7/16 DIN MALE TO 4.3/10 MALE ADAPTER**

DWG NO. **RFD-1686-4**

SCALE: NTS ENGINEERING ID: 000000 SHEET 1 OF 1