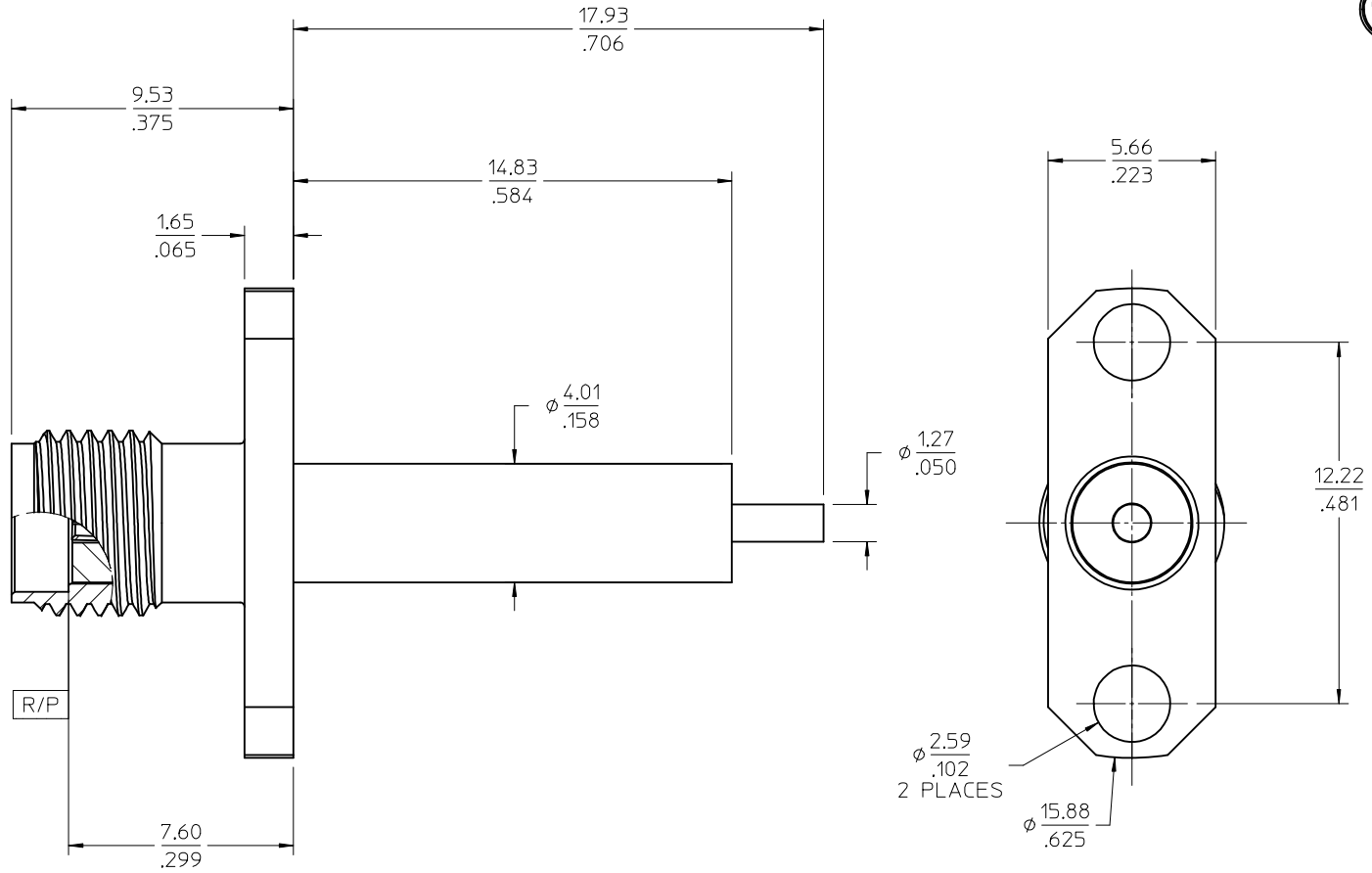
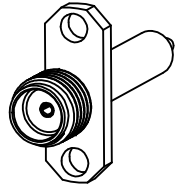


MATERIALS AND FINISHES

BODY: STAINLESS STEEL
PLATED SEE TABLE

CONTACT: BERYLLIUM COPPER
PLATED GOLD 30 MICRINCHES

INSULATOR: TEFLON



73251-0422	10 u-IN GOLD	73251-0422 BY TRAY (40 CAV.)
73251-0421	PASSVATED	73251-0420 BY TRAY (20 CAV.)
73251-0420	PASSVATED	73251-0420 BY TRAY (40 CAV.)
PART NO.	FINISH	PACKAGING

PS-89675-2820	ELEC/MECH PERFORMANCE
MIL-STD-348A, FIG. 310.2	INTERFACE
SPECIFICATION	DESCRIPTION

CHG: UPDATED PACKAGING OF -0420 & -0422 PER RF16-E077	EC NO: URF2016-0743	DRWNR:YEH	CHKD:	APPR:YCHENG	DESCRIPTION
	2016/05/02				2016/05/05
					A4

QUALITY SYMBOLS	GENERAL TOLERANCES (UNLESS SPECIFIED)
▽=0	mm INCH
▽=0	4 PLACES ± --- ± ---
▽=0	3 PLACES ± --- ± ---
	2 PLACES ± --- ± ---
	1 PLACE ± --- ± ---
	0 PLACE ± ±
	ANGULAR ± 2 °
	DRAFT WHERE APPLICABLE MUST REMAIN WITHIN DIMENSIONS

DIMENSION STYLE	SCALE	DESIGN UNITS	THIRD ANGLE PROJECTION
MM/IN	8:1	METRIC	
DRAWN BY	DATE	TITLE	
TEF	2001/06/22	SMA JACK CANDLESTICK RECEPTACLE 2 HOLE FLANGE SMA-JR	
CHECKED BY	DATE	molex	
SSS	2001/06/22	SD-73251-042	
APPROVED BY	DATE	SHEET NO.	
GMH	2001/06/22	1 OF 1	
MATERIAL NO.	DOCUMENT NO.	THIS DRAWING CONTAINS INFORMATION THAT IS PROPRIETARY TO MOLEX INCORPORATED AND SHOULD NOT BE USED WITHOUT WRITTEN PERMISSION	
SEE TABLE			