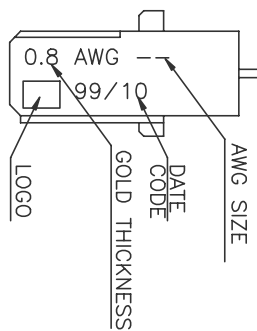
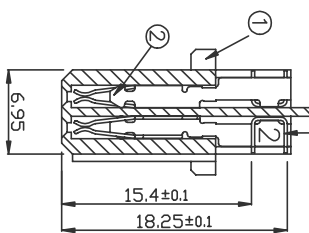
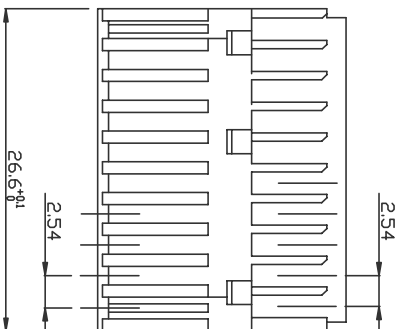


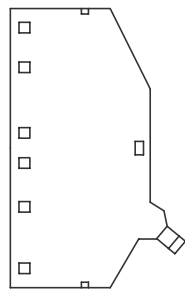


CONNECTOR

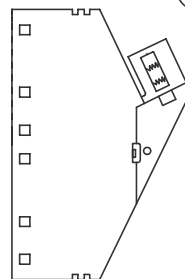


CONTACT ITEM 2 IDENTIFICATION SEE DESCRIPTION

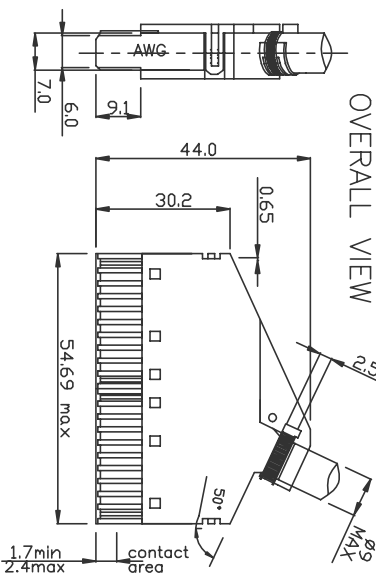
HOOD P4\_P6



P5\_P7



OVERALL VIEW



NOTES:  
1.MATERIAL:  
HOOD:THERMALPLASTIC UL94V0;  
BODY:GLASSFIBER REINFORCED THERMALPLASTIC UL94V0;  
CONTACTS:PHOSPHOR BRONZE;  
PLATING:GOLD OVER 2um NICKEL ON WORKING AREA.

2.MECHANICAL REQUIREMENT:  
INSERTION FORCE(EACH CONTACT):<=1N;  
WITHDRAWAL FORCE (EACH CONTACT):>=0.19N;  
DURABILITY:>=100CYCLES.  
3.ELECTRICAL REQUIREMENT:  
INITIAL CONTACT RESISTANCE:<=20MILLIOHM;  
INSULATION RESISTANCE AFTER TEST:>=10000MEGAOHM;  
WITHSTANDING VOLTAGE:>1000Vrms;  
OPERATING VOLTAGE:250VAC;  
OPERATING CURRENT:1.3A AT 70 DEGREE.  
4.IF LEAD FREE P/N, GS-14-920 SHOULD BE APPLIED.  
5.THIS PRODUCT MEETS EUROPEAN UNION DIRECTIVES AND OTHER COUNTRY REGULATIONS AS DESCRIBED IN GS-22-008.

| PLATING CODE&GOLD THICKNESS | E9 Au:1u | Z4 or Z6 Au:0.8u | PART NUMBER      |
|-----------------------------|----------|------------------|------------------|
|                             |          |                  | BPS1B40D0CE9     |
|                             |          |                  | BPS1B40D3CZ6     |
|                             |          |                  | 1AB000490027(LF) |
|                             |          |                  | BPS1B40D3CZ6     |

| ITEM | QTY. | FOR COMPLETE ASSY | DESCRIPTION                         | DRAWING  |
|------|------|-------------------|-------------------------------------|----------|
| 1    | 2    | 2                 | PLASTIC CABLE CLAMP                 | YAW19067 |
| 2    | 40   | 40                | CABLE CLAMP Ø12.5                   | YAW19066 |
| 3    | 1    | 1                 | CROSSHEADED SCREW                   | YAW21289 |
| 4    | 1    | 1                 | OR SLOTTED SCREW                    | YAW19065 |
| 5    | 1    | 1                 | 1/2 CABLE HOOD FOR AWG30            | VRW13126 |
| 6    | 1    | 1                 | 1/2 CABLE HOOD FOR AWG24 AWG26      | VRW13127 |
| 7    | 1    | 1                 | 1/2 CABLE HOOD FOR AWG30            | VRW11172 |
| 8    | 40   | 40                | CONTACT FOR AWG24(IDENTIFICATION-3) | YAW10916 |
| 9    | 40   | 40                | CONTACT FOR AWG26(IDENTIFICATION-2) | YAW10916 |
| 10   | 2    | 2                 | CONTACT FOR AWG30(IDENTIFICATION-0) | YAW10916 |
| 11   | 2    | 2                 | BODY FOR AWG24(COLOR=BLACK)         | VRW11172 |
| 12   | 2    | 2                 | BODY FOR AWG24(COLOR=GREY)          | VRW11172 |

|             |          |            |          |                                       |            |                |                |          |        |                    |        |
|-------------|----------|------------|----------|---------------------------------------|------------|----------------|----------------|----------|--------|--------------------|--------|
| mat'l. code |          | 14         |          | tolerances unless otherwise specified |            | CUSTOMER COPY  |                | FCI      |        | www.fciconnect.com |        |
| ltr         | ecn no   | dr         | date     | linear                                | projection | title          | product family | size     | sheet  | code               | sheet  |
| A           | F03021   | DLE        | 01/29/03 | .XX ± 0.5                             | MM         | ASSY 2X(2X10)  | DIN            | VJWS4644 | 1 of 1 | VXX27633           | 1 of 1 |
| B           | F04-0107 | DLE        | 01/21/04 | .XX ± 0.30                            | MM         | CAPOT & CON.   | DIN            | VJWS4644 | 1 of 1 | VXX27633           | 1 of 1 |
| C           | N05-0223 | ALLEI      | 09/05/05 | ±2°                                   | MM         |                | DIN            | VJWS4644 | 1 of 1 | VXX27633           | 1 of 1 |
| D           | N07-0078 | HB         | 03/20/07 | ±2°                                   | MM         |                | DIN            | VJWS4644 | 1 of 1 | VXX27633           | 1 of 1 |
| eng'g       |          | D LEGRAND  |          | 01/29/03                              |            | product family |                | size     |        | sheet              |        |
| chr         |          | JF NOTTEAU |          | 01/29/03                              |            | DIN            |                | VJWS4644 |        | 1 of 1             |        |
| pppd        |          | F.TI       |          | 01/29/03                              |            | DIN            |                | VJWS4644 |        | 1 of 1             |        |
| sheet       |          | revision   |          | scale                                 |            | product family |                | size     |        | sheet              |        |
| index       |          | sheet      |          | 1:1                                   |            | DIN            |                | VJWS4644 |        | 1 of 1             |        |

B

A

1 | 2

3

4

1 | 2

3

4