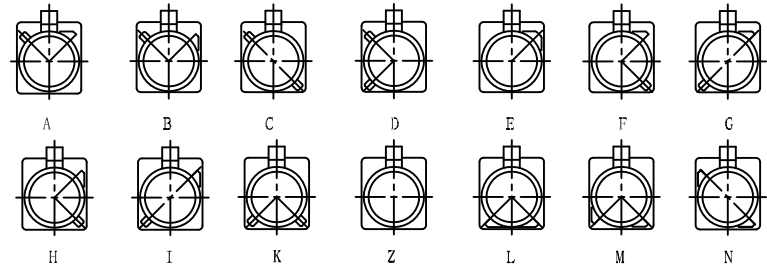
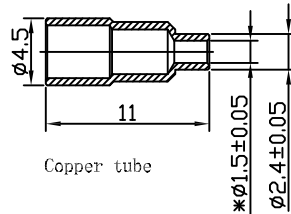
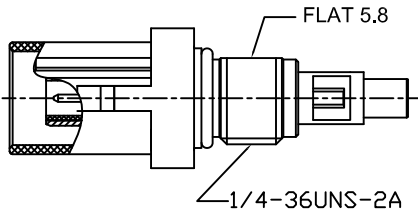
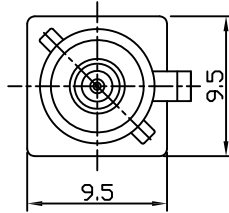
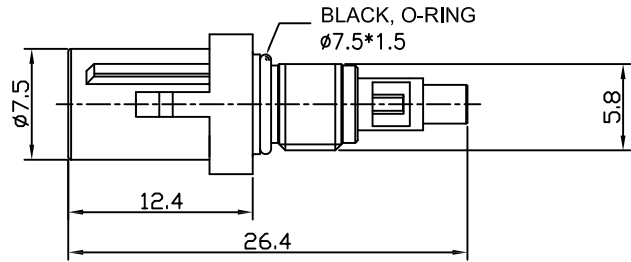
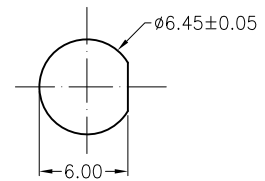
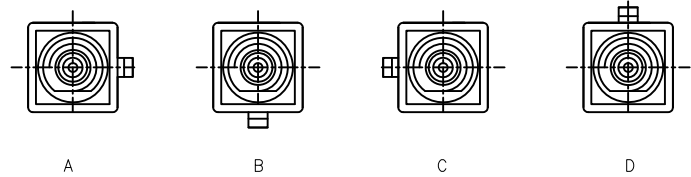
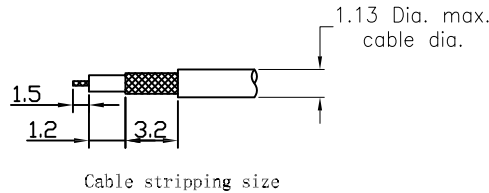
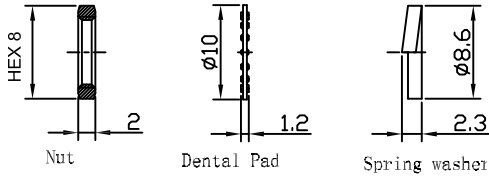


APPROVED: _____
 DATE: _____ TITLE: _____

Rev	AWO #	Description	Date	Appr
-		RELEASED	6/6/18	
A		ADD RECOMMEND PANEL CUT	04/27/20	TW
B		ADD SHT 3, ASSY INSTRUCTIONS	5/14/20	SS
C		UPDATE TITLE SPEC.	8/7/20	AY/RC
D		UPDATE RECOMMENDED CABLE SIZE	3/9/22	SLS



Port Type



RECOMMENDED PANEL CUT

DESCRIPTION	MATERIAL	FINISH
O-RING	BLACK SILICA GEL	
PLASTIC SHELL	PA66+30%GF	
COPPER TUBE	BRASS	NICKEL
INSULATOR	PTFE	
PIN CONTACT	BRASS	GOLD
BODY	BRASS	TRREE ELEMENT ALLOY

SPECIFICATIONS:
 Electrical:
 Frequency range: DC~4 GHz
 Nominal Impedance: 50 ohms
 VSWR: <1.3
 Withstanding voltage: 335 V
 Insulator Resistance: 1000 MΩ
 Contact Resistance: 6 Milliohms max. (Center Contact)
 1 Milliohms max. (Outer Contact)

Temperature Rating:
 Operating temperature: -40°C to +85°C
 Environmental:
 Lead free, RoHS compliant.



UNLESS OTHERWISE SPECIFIED ALL DIMENSIONS ARE MILLIMETERS TOLERANCES: EXCEPT AS NOTED			
INCHES		HOLES	
.X	± 0.25	Ø.XX	± 0.13
.XX	± 0.15		
.XXX	+ 0.05		
APPROVALS		DATE	
DRAWN	AY	6/6/18	
CHECKED	MY	6/6/18	
APPROVED			

ADAM TECH INTERCONNECTS
 909 Rahway Avenue,
 Union, NJ 07083
 Phone: 908-687-5000
 Fax: 908-687-5710

TITLE FAKRA PLUG SMB TYPE STRAIGHT, BULKHEAD (IP54), SOLDER / CRIMP, FOR 1.13, 1.32 & 1.37 DIA. CABLE		
SIZE	PART NO.	REV.
X	RF55-24X-T-09-50-X-SH	D
REF: S00134C	SCALE: NTS	SHEET 1 OF 3

6

5

4

3

2

1

APPROVED: _____

DATE: _____ TITLE: _____

Rev	AWO #	Description	Date	Appr
-----	-------	-------------	------	------

SEE SHT 1 OF 2 FOR REVISION

Type	Color	For Cable	Direction	Item No	Type	Color	For Cable	Direction	Item No	Type	Color	For Cable	Direction	Item No		
A	BLACK	1.13, 1.32, 1.37	A	RF55-24A-T-09-50-A-SH	F	BROWN	1.13, 1.32, 1.37	A	RF55-24F-T-09-50-A-SH	Z	WATER BLUE	1.13, 1.32, 1.37	A	RF55-24Z-T-09-50-A-SH		
			B	RF55-24A-T-09-50-B-SH				B	RF55-24F-T-09-50-B-SH				B	RF55-24Z-T-09-50-B-SH		
			C	RF55-24A-T-09-50-C-SH				C	RF55-24F-T-09-50-C-SH				C	RF55-24Z-T-09-50-C-SH		
			D	RF55-24A-T-09-50-D-SH				D	RF55-24F-T-09-50-D-SH				D	RF55-24Z-T-09-50-D-SH		
B	WHITE		A	RF55-24B-T-09-50-A-SH	G	GREY		A	RF55-24G-T-09-50-A-SH	L	CARMINE RED		A	RF55-24L-T-09-50-A-SH	A	RF55-24M-T-09-50-A-SH
			B	RF55-24B-T-09-50-B-SH				B	RF55-24G-T-09-50-B-SH				B	RF55-24L-T-09-50-B-SH	B	RF55-24M-T-09-50-B-SH
			C	RF55-24B-T-09-50-C-SH				C	RF55-24G-T-09-50-C-SH				C	RF55-24L-T-09-50-C-SH	C	RF55-24M-T-09-50-C-SH
			D	RF55-24B-T-09-50-D-SH				D	RF55-24G-T-09-50-D-SH				D	RF55-24L-T-09-50-D-SH	D	RF55-24M-T-09-50-D-SH
C	BLUE		A	RF55-24C-T-09-50-A-SH	H	VIOLET		A	RF55-24H-T-09-50-A-SH	M	PASTEL ORANGE		A	RF55-24N-T-09-50-A-SH	A	RF55-24O-T-09-50-A-SH
			B	RF55-24C-T-09-50-B-SH				B	RF55-24H-T-09-50-B-SH				B	RF55-24N-T-09-50-B-SH	B	RF55-24O-T-09-50-B-SH
			C	RF55-24C-T-09-50-C-SH				C	RF55-24H-T-09-50-C-SH				C	RF55-24N-T-09-50-C-SH	C	RF55-24O-T-09-50-C-SH
			D	RF55-24C-T-09-50-D-SH				D	RF55-24H-T-09-50-D-SH				D	RF55-24N-T-09-50-D-SH	D	RF55-24O-T-09-50-D-SH
D	BORDEAUX VIOLET		A	RF55-24D-T-09-50-A-SH	I	BEIGE		A	RF55-24I-T-09-50-A-SH	N	PASTEL GREEN		A	RF55-24P-T-09-50-A-SH	A	RF55-24Q-T-09-50-A-SH
			B	RF55-24D-T-09-50-B-SH				B	RF55-24I-T-09-50-B-SH				B	RF55-24P-T-09-50-B-SH	B	RF55-24Q-T-09-50-B-SH
			C	RF55-24D-T-09-50-C-SH				C	RF55-24I-T-09-50-C-SH				C	RF55-24P-T-09-50-C-SH	C	RF55-24Q-T-09-50-C-SH
			D	RF55-24D-T-09-50-D-SH				D	RF55-24I-T-09-50-D-SH				D	RF55-24P-T-09-50-D-SH	D	RF55-24Q-T-09-50-D-SH
E	GREEN	A	RF55-24E-T-09-50-A-SH	K	CURRY	A	RF55-24K-T-09-50-A-SH			A	RF55-24R-T-09-50-A-SH	A	RF55-24S-T-09-50-A-SH			
		B	RF55-24E-T-09-50-B-SH			B	RF55-24K-T-09-50-B-SH	B	RF55-24R-T-09-50-B-SH	B	RF55-24S-T-09-50-B-SH					
		C	RF55-24E-T-09-50-C-SH			C	RF55-24K-T-09-50-C-SH	C	RF55-24R-T-09-50-C-SH	C	RF55-24S-T-09-50-C-SH					
		D	RF55-24E-T-09-50-D-SH			D	RF55-24K-T-09-50-D-SH	D	RF55-24R-T-09-50-D-SH	D	RF55-24S-T-09-50-D-SH					

UNLESS OTHERWISE SPECIFIED
ALL DIMENSIONS ARE MILLIMETERS
TOLERANCES: EXCEPT AS NOTED
INCHES HOLES

.X ± 0.25
.XX ± 0.15 Ø.XX ± 0.13
.XXX + 0.05

ADAM 909 Rahway Avenue,
TECH Union, NJ 07083
INTERCONNECTS Phone: 908-687-5000
Fax: 908-687-5710

TITLE
FAKRA PLUG SMB TYPE STRAIGHT, BULKHEAD (IP54),
SOLDER / CRIMP, FOR 1.13, 1.32 & 1.37 DIA. CABLE

APPROVALS		DATE
DRAWN	AY	6/6/18
CHECKED	MY	6/6/18
APPROVED		

SIZE	PART NO.	REV.
X	RF55-24X-T-09-50-X-SH	D
REF: S00134C	SCALE: NTS	SHEET 2 OF 3

6

5

4

3

2

1

4

3

2

1

Rev

AWO #

Description

Date

Appr

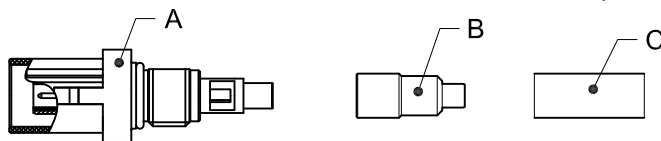
SEE SHT 1 OF 3 FOR REVISION

FAKRA connector cable assembly instructions
(Suitable for 1.13, 1.32 and 1.37 Dia. cable)

STEP 1

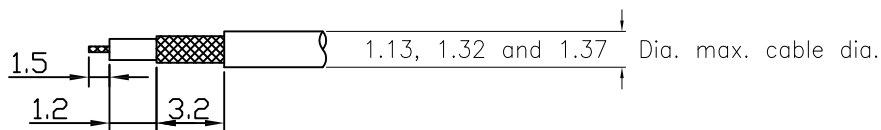
PARTS NEEDED

A = Fakra Connector B = Metal Sleeve C = Heat Shrink Tubing
(customer supplied)



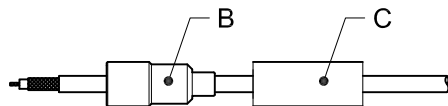
STEP 2

Strip Cable per below stripping lengths
Conductor 1.5mm / Dielectric 1.2mm / Braid 3.2mm



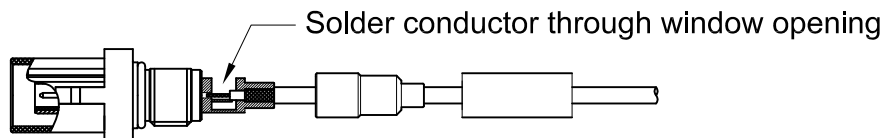
STEP 3

Slide cable through metal sleeve "B" and heat shrink "C"



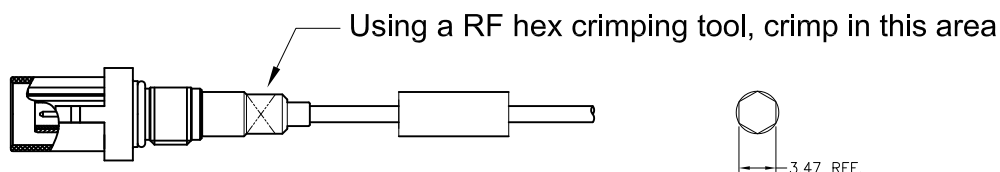
STEP 4

Insert cable into back of connector and solder conductor



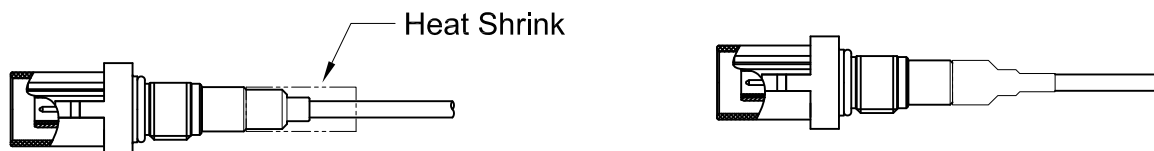
STEP 5

Slide metal sleeve "B" over back of connector.



STEP 6

Slide heat Shrink over back of connector and heat with heat gun



UNLESS OTHERWISE SPECIFIED
ALL DIMENSIONS ARE MILLIMETERS
TOLERANCES: EXCEPT AS NOTED
INCHES HOLES
.X ± 0.25
.XX ± 0.15 ∅XX ± 0.13
.XXX + 0.05

APPROVALS		DATE
DRAWN	AY	6/6/18
CHECKED	MY	6/6/18
APPROVED		

ADAM
TECH
INTERCONNECTS

909 Rahway Avenue,
Union, NJ 07083
Phone: 908-687-5000
Fax: 908-687-5710

TITLE
FAKRA PLUG SMB TYPE STRAIGHT, BULKHEAD (IP54),
SOLDER / CRIMP, FOR 1.13, 1.32 & 1.37 DIA. CABLE

SIZE X	PART NO. RF55-24X-T-09-50-X-SH	REV. C
-----------	-----------------------------------	-----------

REF: SCALE: NTS SHEET 3 OF 3

4

3

2

1

F

F

E

E

D

D

C

C

B

B

A

A