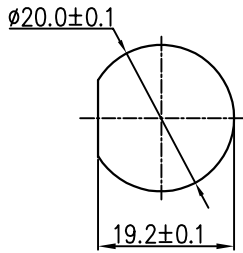
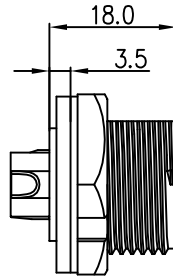


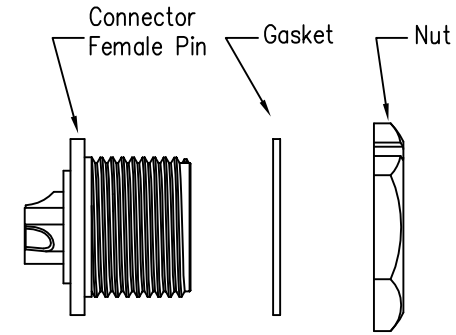
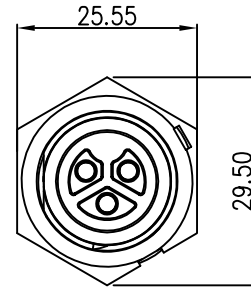
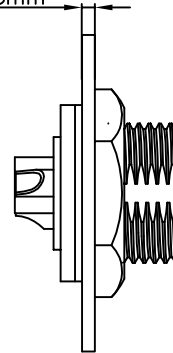
REV.	ECN NO.	DESCRIPTION	SIGN	DATE
C1	N/A	INITIAL DRAWING	Liu	2019/08/13



Recommended Panel Cut-Out



Panel T: Max 3.5mm

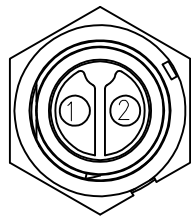


23XXX615-01

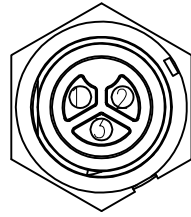
Pin Number

Specification:

- 1.Operation Temperature: $-45^{\circ}\text{C} \sim 105^{\circ}\text{C}$.
- 2.Insulation Resistance: $100\text{M}\Omega$ at DC500V.
- 3.Contact Resistance: $<10\text{m}\Omega$.
- 4.Withstand Voltage: 2000V AC
- 5.Operating Current: 20A
- 6.Operating Voltage: AC 300V
- 7.Waterproof Rate: IP67 (Mated)
- 8.Housing: Nylon, Black
- 9.Female Pin: Copper Alloy, Gold Plated
- 10.Gasket: Silicon Gray
- 11.Panel Nut: Nylon, Black
- 12.Torque Rate: $0.8 \sim 1.0\text{N} \cdot \text{m}$
- 13.RoHS Compliant.
- 14.UL Compliant.
- 15.Mating Cap P/N: 806-00021-00



2 Pin

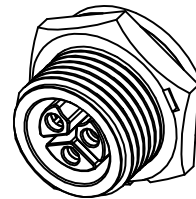


3 Pin

P/N: 23002615-01

P/N: 23003615-01

Pin Assignments Front View



CHOGORI

UNIT:mm		DESCRIPTION	Middle Series Screw Type Front Mount With Female Pin	PART NO	23XXX615-01	DRAWN BY	Liu	DATE	2019/08/13
TOLERANCE	.X ±0.25 .XX ±0.15 .XXX ±0.05 ANGLES ±1°	SCALE	1:1	SHEET	1 OF 1	CHECKED BY	Mo	DATE	2019/08/13
REV.	C1	SIZE	A4	* : Inspection Item	CUSTOMER	APPROVED BY	Panson	DATE	2019/08/13

THIS INFORMATION IS CONFIDENTIAL AND IS DISCLOSED TO YOU ON CONDITION THAT NO FURTHER DISCLOSURE IS MADE BY YOU TO OTHER THAN CHOGORI PERSONNEL WITHOUT AUTHORIZATION FROM CHOGORI CORP.