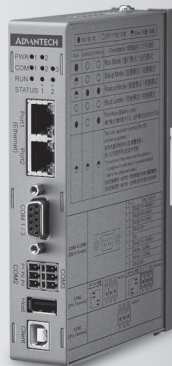


WebOP-2000G

Industrial Data Gateway with WebAccess/HMI

NEW



WebAccess/HMI



Features

- Supports over 450 PLC communication protocols
- Dual power inputs with backup to shorten down time for power fail
- Backup Memory SRAM in 128KB for retaining critical data
- Remote monitoring function through VNC viewer on iOS, Android, Windows, Mac OS devices
- Supports watchdog function setting from WebAccess/HMI Designer to reboot periodically and prevent from shutdown
- Supports WebAccess/HMI Designer development tool on Windows XP/ Vista/7/10
- Easily accessible SD slot with 1GB industrial grade SD card included
- RISC 32 bit ARM9 processor up to 200MHz with 64MB memory
- 1 x LAN, 1 x RS-232, 1 x RS-232/485, 1 x RS-232/422/485, 1 x USB 1.1 (host), 1 x USB 2.0 (client)

Introduction

WebOP-2000G is an industrial data gateway, including WebAccess/HMI Runtime and 1GB industrial grade SD card for data storage. This gateway features dual power inputs to shorten the downtime to enhance operation stability. WebOP-2000G equipped with versatile I/O interfaces that can easily connect PLCs, controllers, I/O devices and PC/Server for data transmission. User can edit programs on PC/laptop through WebAccess/HMI Designer and execute on built-in WebAccess/HMI Runtime for data acquisition, exchange and uploading. This user-friendly, reliable solution is able to collect production data completely for analysis to increase efficiency significantly and optimize the manufacturing.

Specifications

General

- **Certifications** CE, CCC, UL, FCC Class A
- **Dimensions (W x H x D)** 29 x 98.6 x 150.3mm (1.14" x 3.88" x 5.92")
- **Operating System** RTOS
- **Power Input Voltage** 12-30V_{DC}
- **Power Consumption** 5W
- **Enclosure Housing** Aluminum
- **Mounting** DIN-rail, Wall-Mount
- **Weight (Net)** 0.4 kg (0.88 lbs)

System Hardware

- **CPU** RISC ARM9 32Bit, 200MHz
- **Battery Backup Memory** 128KB
- **Flash Memory** 8MB
- **RTC Battery** Yes
- **LED Indicators** PWR1/ PWR2
COM1/ COM2/ COM3
RUN/ STATUS1/ STATUS2

Communication Interface

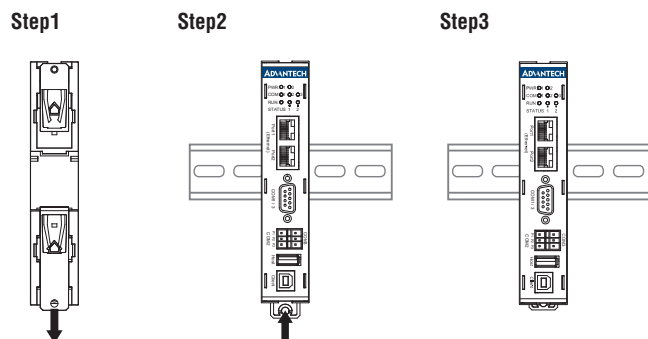
- **COM1** RS-232/422/485 (DB9 Female)
- **COM2** RS-232/485 (3-Pin Terminal, by DIP switch)
- **COM3** RS-232 (3-Pin Terminal)
- **Ethernet** 10/100Mbps (2 x RJ45 with daisy chain technology)
- **I/Os** USB Client Yes
USB Host Yes
SD Slot Yes (with 1GB industrial grade SD card included)

Environment

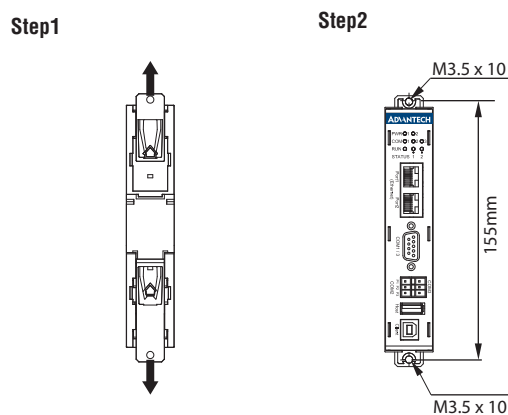
- **Operating Temperature** -20 ~ 60°C (-4 ~ 140°F)
- **Storage Temperature** -25 ~ 75°C (-13 ~ 166°F)
- **Humidity** 10 ~ 90% RH @ 40°C, non-condensing
- **Shock Protection** Operating, IEC 60068-2-27, 10G, half sine, 11 ms
- **Vibration Protection** Operating, IEC 60068-2-64, 1Grms, random, 5 ~ 500 Hz, 1hr/axis

Installation Scenario

DIN-Rail Mounting

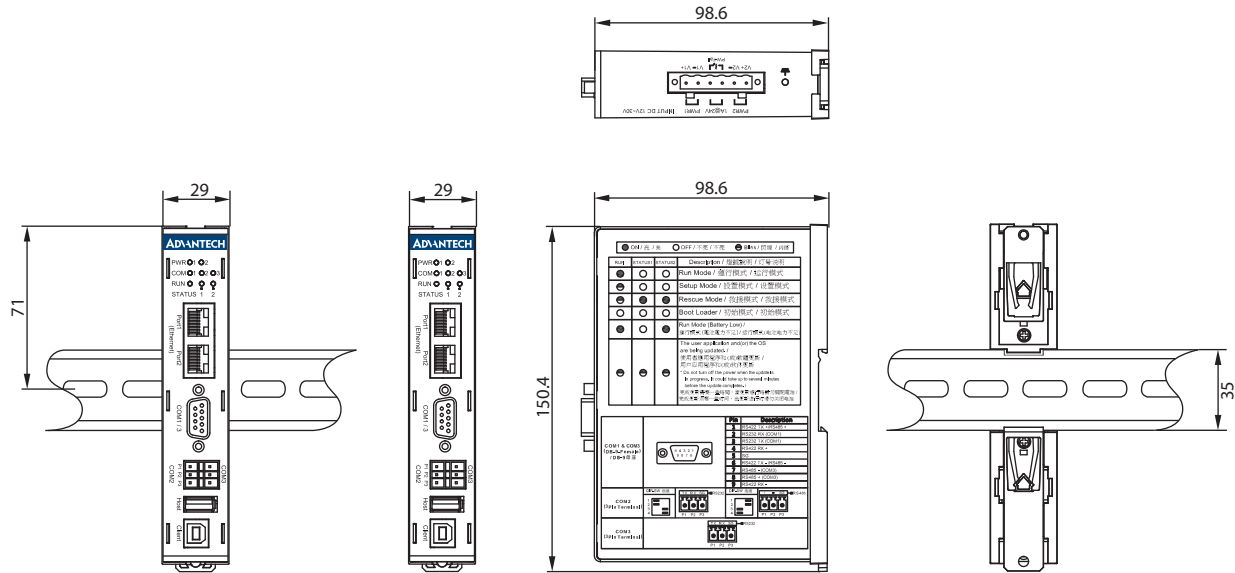


Wall Mount



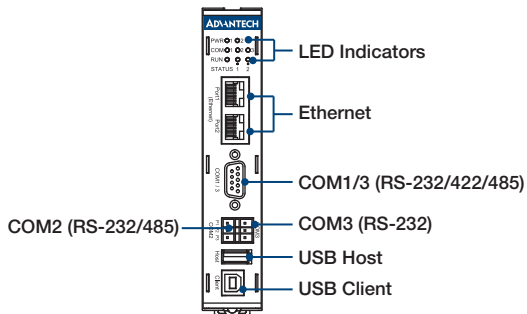
Dimensions

Unit: mm

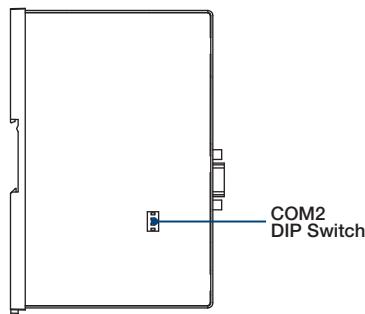


I/O Views

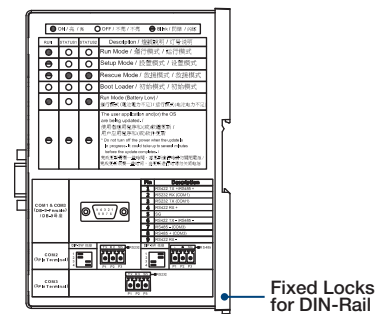
Front



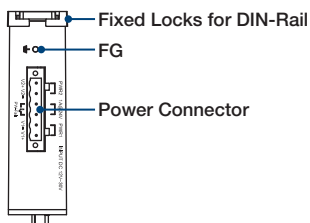
Left



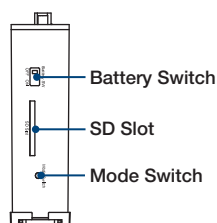
Right



Top



Bottom



Ordering Information

- WOP-2000G-N2AE ARM A9, 64MB (SDRAM), 8MB (NOR), Ethernet, 1GB SD card, WebAccess/HMI Runtime

Optional Accessories

Adapters & Power cords:

- PWR-247-CE ADP A/D 100-240V 60W
- 1702002600 Power Cable US Plug 1.8 M
- 1702002605 Power Cable EU Plug 1.8 M
- 1702031801 Power Cable UK Plug 1.8 M
- 1700000596 Power Cable China/Australia Plug 1.8 M

Development Tool

WebAccess/HMI Designer V2.1

<http://www.advantech.com/industrial-automation/webaccess/download>