

INOSP-152-RE / INOSP-192-RE

Stainless Steel Panel PC
Fanless Stainless Steel Panel PC
with Intel® Atom® Processor E3845

INOSP Series 15" 19"



I/O View



INOSP-152-RE-F/INOSP-192-RE-F
(Full Function)

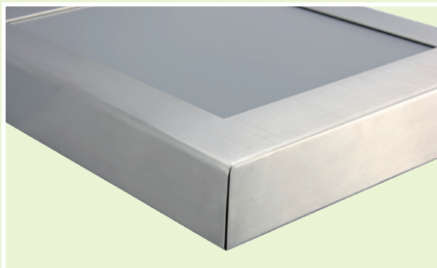


INOSP-152-RE/ INOSP-192-RE (Standard)

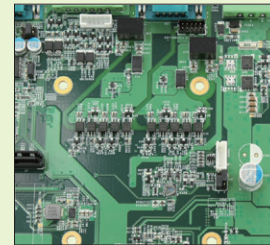
Features

Special model-By require, MOQ 20pcs

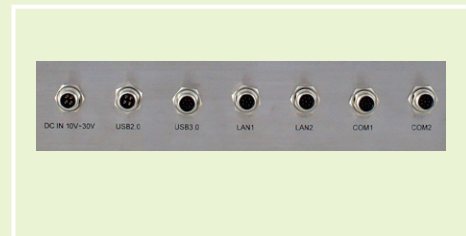
- Fanless design
- Resistive/ Projected capacitive (19" model) touch
- Durable stainless steel housing
- Low power consumption processor



- Wide-range 10V~30V DC power input
- USB 3.0 (optional)



- M12 I/O port



INOSP-152-RE / INOSP-192-RE

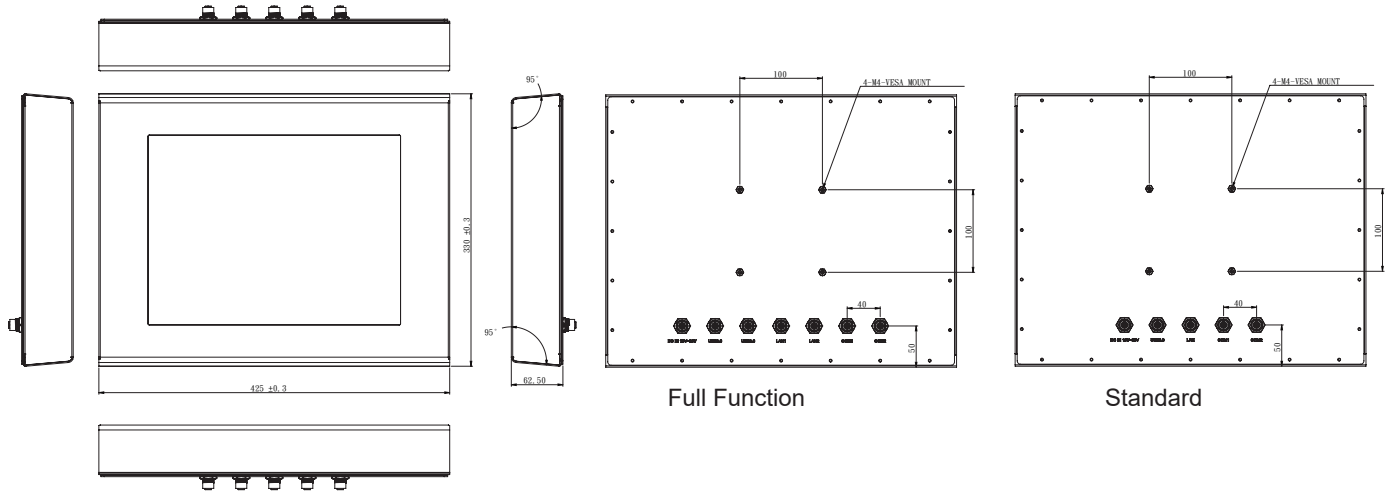
Specifications

Model No.		INOSP-152-RE(-F)	INOSP-192-RE(-F)
Display & Touch Screen	Display Size	15" TFT-LCD	19" TFT-LCD
	Max. Resolution	1024 x 768	1280 x 1024
	Luminance (cd/m ²)	500	350
	Contrast	800 : 1	1000 : 1
	Max. Color	16.2M	16.7M
	View Angle (H°/V°)	160/160	170/160
	Backlight Lifetime(hrs)	50,000	50,000
	Touch Type	Resistive	Resistive
	Touch Interface	USB	USB
	Light Transmission (%)	80	80
	Point of touch	1	1
System	Processor	Intel® Atom® Processor E3845 1.91GHz	Intel® Atom® Processor E3845 1.91GHz
	Memory	2x DDR3L SO-DIMM, up to 8GB, default 4GB	2x DDR3L SO-DIMM, up to 8GB, default 4GB
	Thermal Design	Fanless	Fanless
	Membrane Control	None	None
	Built-in Speaker/MIC	None	None
I/O Interface	USB 3.0	optional (M12)	optional (M12)
	USB 2.0	1 (M12)	1 (M12)
	RS-232/422/485 Selectable in BIOS	1 (M12)	1 (M12)
	RS-232	1 (M12)	1 (M12)
	LAN	1x GbE (M12) Second LAN (option)	1x GbE (M12) Second LAN (option)
	Additional Graphics	None	None
	Audio	None	None
	Digital I/O	None	None
	Power Connector	M12 connector	M12 connector
	Power Button	None	None
Mechanical	Dimensions (mm)	425 x 330 x 62.5	470 x 390 x 62.5
	Net Weight (kgs)	13.5	17
Expansion	Internal Expansion Bus	1x Mini PCI-E(x1) [full/half-size] 1x Mini PCI-E(x1) [half-size]	1x Mini PCI-E(x1) [full/half-size] 1x Mini PCI-E(x1) [half-size]
	Expansion Slot	None	None
	Wireless	None	None
Storage Space	HDD	1x 2.5" SATA	1x 2.5" SATA
	Removable	None	None
Power	Power Input Range	10V~30V DC	10V~30V DC
Construction	Chassis Material	304 stainless steel / 316 stainless steel (option)	
	Color (Front/Back)	Silver / Silver	
	IP Rating	IP65 / IP69K	
	Mounting	VESA 75x75mm and 100x100mm	
Environmental	Operating Temperature	0°C ~ 50°C	
	Storage Temperature	-20°C ~ 60°C	
	Storage Humidity	10%~90% (non-condensing)	
	Certification	CE/FCC Class-B and LVD	
	Supported Operating Systems	Windows 10/ Windows 8 32-bit/64-bit, Windows 7 Pro for Embedded 64-bit, WES7 64-bit	

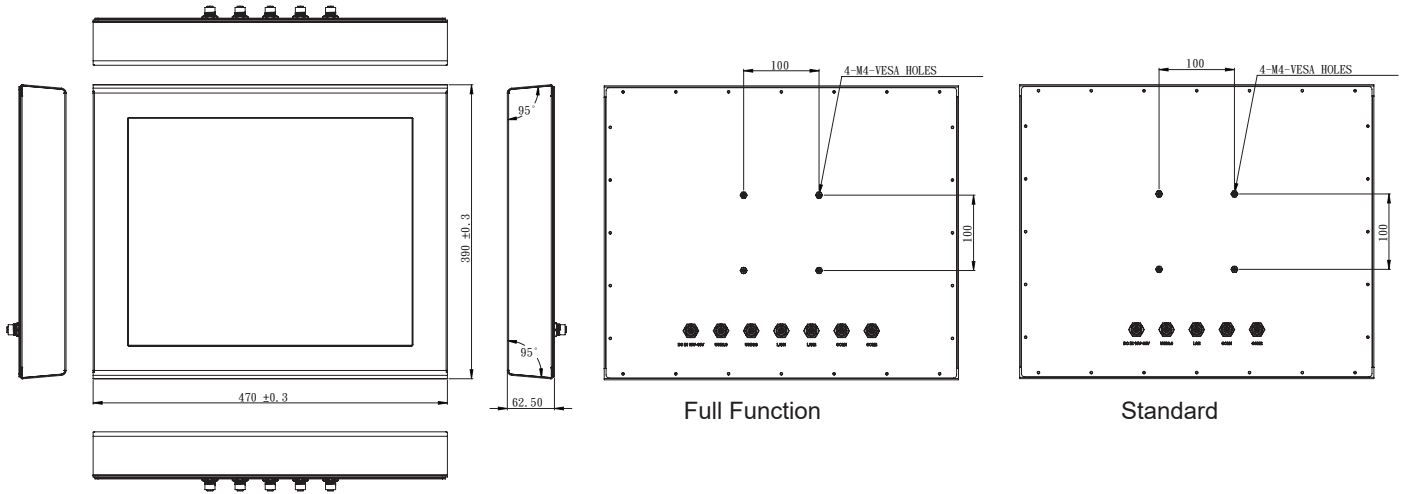
INOSP-152-RE / INOSP-192-RE

Dimensions

INOSP-152-RE



INOSP-192-RE



Ordering Information

INOSP-152-RE	15" Stainless Steel Panel PC with IB897-I45P, Intel® Atom® Processor E3845 1.91GHz, 4GB DDR3L SO-DIMM, 64G SSD, resistive touch
INOSP-192-RE	19" Stainless Steel Panel PC with IB897-I45P, Intel® Atom® Processor E3845 1.91GHz, 4GB DDR3L SO-DIMM, 64G SSD, resistive touch