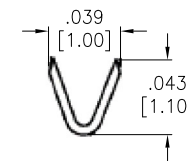
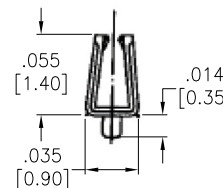
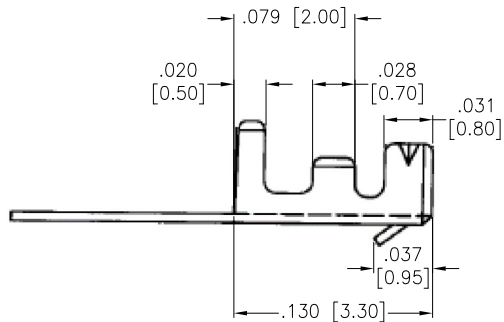
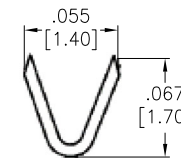
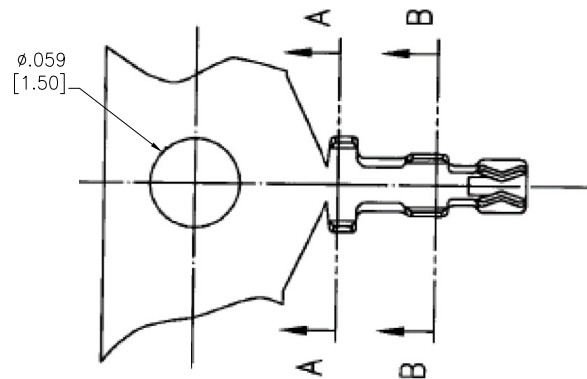


APPROVED: _____
 DATE: _____ TITLE: _____

Rev	AWO #	Description	Date	Appr
-		RELEASED	03/24/05	
A		REDRAWN	9/16/21	LH/RC



SPECIFICATIONS:

Material: Phospher Bronze 0.15mm thick

Plating: Tin Plated 60u"

Mechanical:

Wire Range: 28-32 AWG.

Insulation Range: 1.00mm Max.

Packaging: Chain Reel, 10K pcs / reel

Environmental:

Lead free, RoHS Compliant



UNLESS OTHERWISE SPECIFIED ALL DIMENSIONS ARE INCHES [MM]. TOLERANCES: EXCEPT AS NOTED				909 Rahway Avenue, Union, NJ 07083							
<table border="0"> <tr> <td>INCHES</td> <td>HOLES</td> </tr> <tr> <td>.X ± .10</td> <td>Ø.X ± .10</td> </tr> <tr> <td>.XX ± .020</td> <td>Ø.XX ± .015</td> </tr> <tr> <td>.XXX ± .015</td> <td>Ø.XXX ± .010</td> </tr> </table>				INCHES	HOLES	.X ± .10	Ø.X ± .10	.XX ± .020	Ø.XX ± .015	.XXX ± .015	Ø.XXX ± .010
INCHES	HOLES										
.X ± .10	Ø.X ± .10										
.XX ± .020	Ø.XX ± .015										
.XXX ± .015	Ø.XXX ± .010										
DRAWN		SS	03/24/05	TITLE							
CHECKED				CRIMP TERMINAL 1.25mm FOR							
APPROVED				125CH-A-XX HOUSING							
THIS DRAWING CONTAINS INFORMATION THAT IS PROPRIETARY AND SHOULD NOT BE USED WITHOUT PRIOR WRITTEN PERMISSION FROM ADAM TECH		SIZE	PART NO.	REV.							
		X	125CTA-R	-							
REF: S00016T		SCALE: NTS	SHEET 1 OF 1								