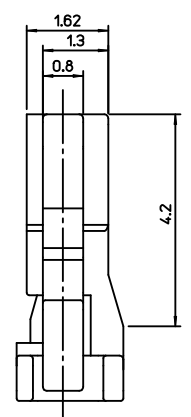
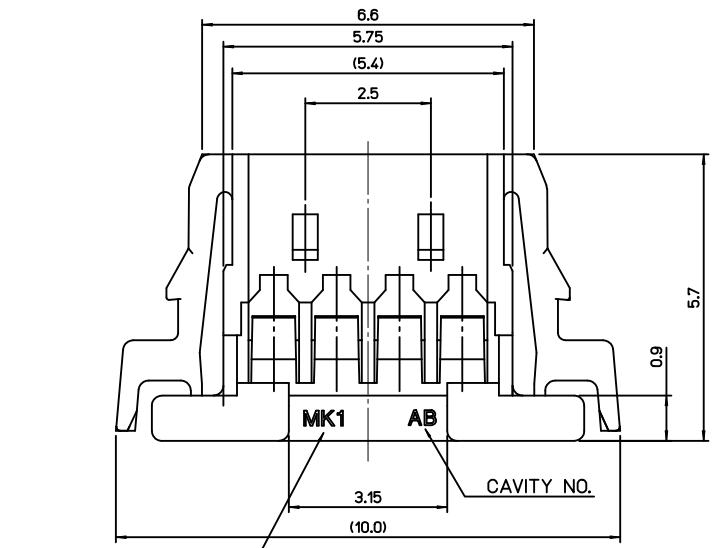
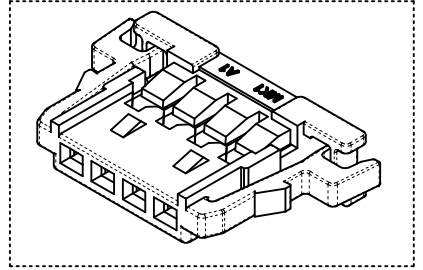


TERMINAL ASSEMBLY DRAWING  
[REFERANCE]

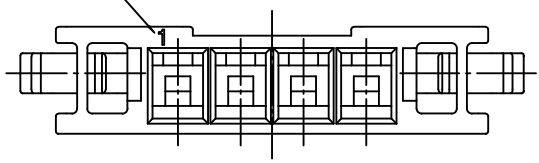


NOTES

1. MATED WITH : 104086-0410
2. MATERIALS  
LIQUID CRYSTALPOLYMER (LCP,E130I)  
GLASS FILLED,UL94V-0, NATURAL COLOR
3. APPLICABLE TERMINAL : 104505-8103

TRADE MARK

CKT. NO.1



**ORDER NUMBER** 104085-0420

NEW RELEASED  
EC NO: 2011/01/28  
DRW:CBCHIN  
CHKD:SH. CHU  
APPR:  
A

QUALITY SYMBOLS  
▽=0  
∇=0  
DESCRIPTION  
REV

GENERAL TOLERANCES (UNLESS SPECIFIED)	
	mm INCH
4 PLACES	± 0.15 ± 0.004
3 PLACES	± 0.20 ± 0.005
2 PLACES	± 0.25 ± 0.006
1 PLACE	± 0.30 ± 0.008
ANGULAR ± 1°	

DRAFT WHERE APPLICABLE  
MUST REMAIN  
WITHIN DIMENSIONS

DIMENSION STYLE	
MM ONLY	
DRAWN BY	DATE
JB. JIN	2010/11/13
CHECKED BY	DATE
SH. CHU	2010/11/13
APPROVED BY	DATE
YSOO.KIM	2010/11/13
MATERIAL NO.	
1040850420	

SCALE	DESIGN UNITS	THIRD ANGLE PROJECTION	TITLE
	METRIC	THIRD ANGLE PROJECTION	1.25 W-T-B CONN HOUSING-4P (L=5.7MM)
MOLEX INCORPORATED		DOCUMENT NO.	SHEET NO.
SD-104085-003			1 OF 01
THIS DRAWING CONTAINS INFORMATION THAT IS PROPRIETARY TO MOLEX INCORPORATED AND SHOULD NOT BE USED WITHOUT WRITTEN PERMISSION			