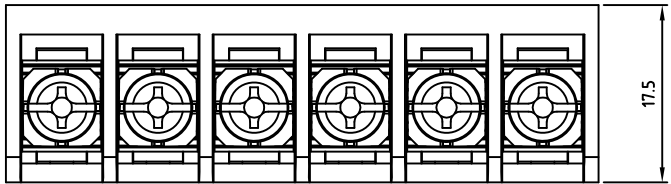
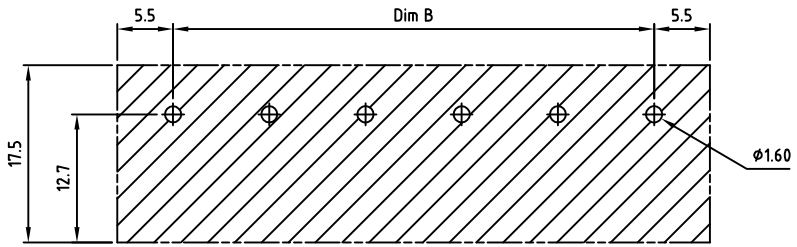
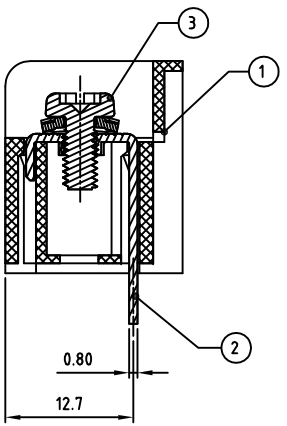
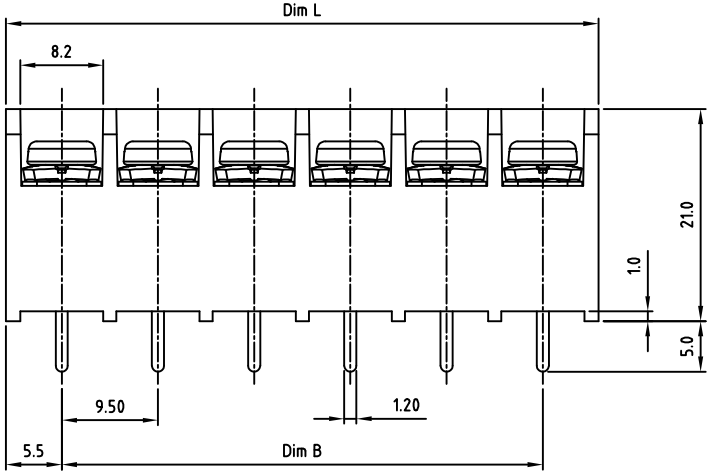
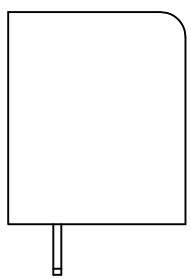


Transfer or duplication of this document as well as the utilisation or communication of its content are not permitted unless express consent is granted. Violations give rise to claims for damages. All rights reserved in case of patent, utility model or design patent registrations.



- Technical data**
- Nominal voltage: 300V/25A
PITCH: 9.5mm
 - Connection capacity:
AWG 22-12
 - Insulation Withstanding Voltage:
AC 2500V/MIN
 - Insulation Resistance:
1000MΩ or more at DC500V
 - Tightening torque:
12.2kgf.cm (1.2N.m)
 - Screw thread: M3.5
 - Operating temperature range: -40°C ~ 115°C
Soldering temperature: 250°C ± 10°C / 5s
 - Undimensioned Tolerances:

Dim.L=P×9.5+1.5 Dim.B=(P-1)×9.5 P= number of poles		
0-30mm	Dim B	Dim L
over 30mm-60mm	±0.15	±0.20
over 60mm-90mm	±0.20	±0.30
over 90mm	±0.25	±0.40
	±0.30	±0.50
 - Safety approval:
 - RoHS Compliance



PCB LAYOUT

Part No.: **OSTYK44AXX030**

No. of Poles
 02 2 Poles
 03 3 Poles

 24 24 Poles

3	SCREW+WASHER	STEEL	M3.5×0.6, Ni Plated	P	
2	CONTACT	BRASS	M3.5×0.6, Tin PLATED	P	
1	BODY	PA66 UL94V-0	Black	1	
ITEM	NAME OF PART	MATERIAL	NOTES	Q'TY	
DWG.	WF. Zhang	DATE 2016.04.04	UNITS: MM	SHEET: 1 OF 1	Tolerance
CHK.	WF. Zhang	DATE 2016.08.03	SCALE: NONE 2:1 (:)	REV.: A	X. ±0.50
APP.		DATE	TITLE: OSTYK44A 9.50 Series		X.X ±0.30
			PART NO. OSTYK44AXX030		X.XX ±0.10
			DWG NO. OSTYK44AXX030.dwg		X* ±1°

	SIGN	DESCRIPTION	CHK.	DATE
--	------	-------------	------	------

OST
ON-SHORE TECHNOLOGY, INC.