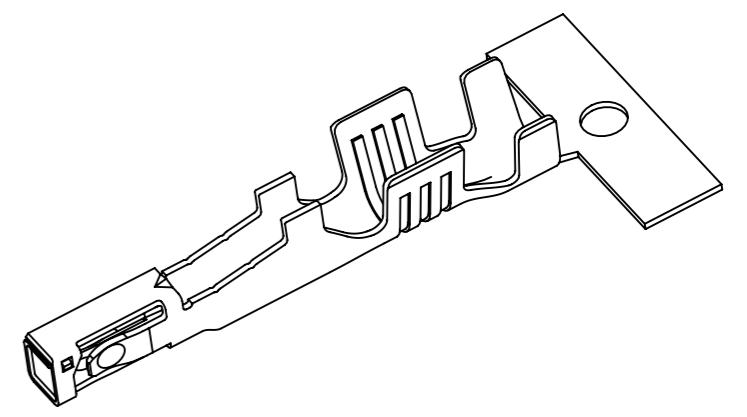
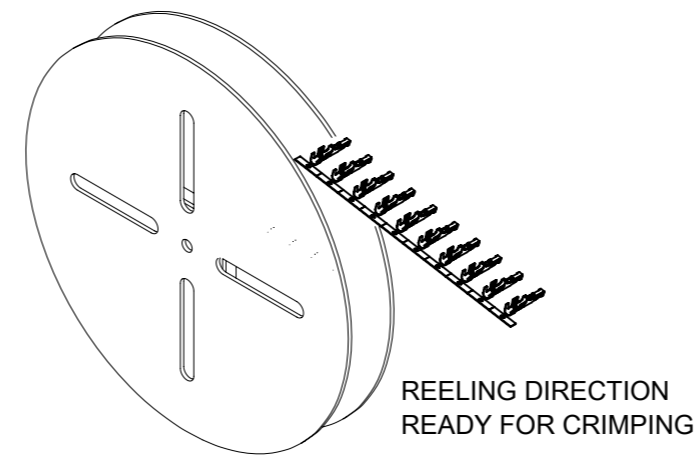
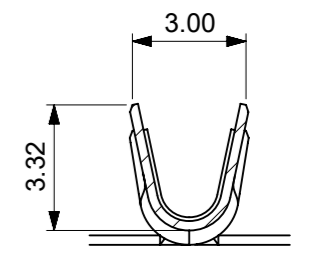
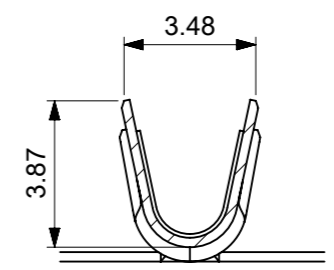
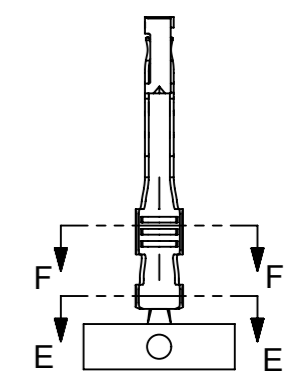
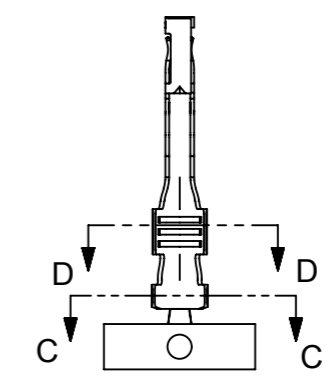
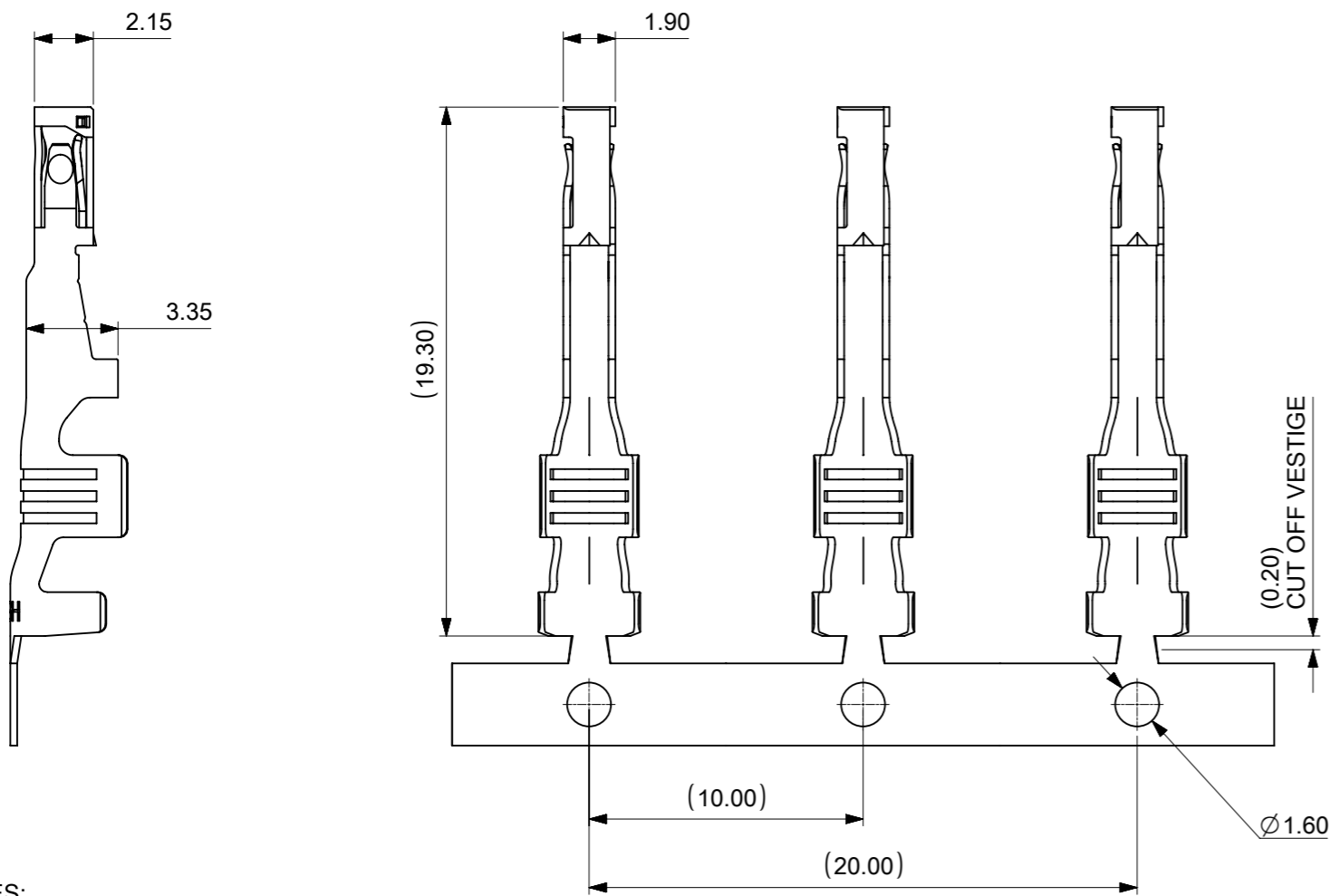


FINISHED RECEPTACLE TERMINALS		
PART NUMBER	CONTACT PLATING OPTION	CRIMP SIZE
212515-3101	REFLOW MATTE TIN	14AWG
212515-3102	REFLOW MATTE TIN	16AWG



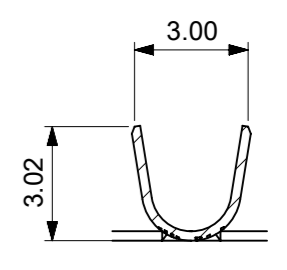
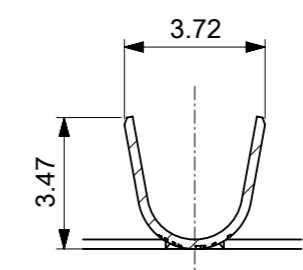
14 AWG CRIMP SIZE

16 AWG CRIMP SIZE



SECTION D-D SCALE 8:1

SECTION F-F SCALE 8:1



SECTION C-C SCALE 8:1

SECTION E-E SCALE 8:1

- NOTES:
1. MATERIAL: HIGH CONDUCTIVITY COPPER ALLOY
  2. PLATING FINISH:  
1.02µm(40µin)-2.54µm(100µin) REFLOW MATTE TIN OVER  
1.27µm(50µin) MINIMUM NICKEL.
  3. PRODUCT SPECIFICATION 2125150001-PS.
  4. PACKAGING SPECIFICATION 2125150001-PK.
  5. TERMINAL FOR USE WITH RECEPTACLE HOUSING SERIES 212514.
  6. MATES WITH: HEADER SERIES 212520.
  7. PART CONFORMS TO CLASS "B" REQUIREMENTS OF COSMETIC SPECIFICATION PS-45499-002.
  8. APPLICATION SPECIFICATION 2125150001-AS.
  9. RECOMMENDED INSULATOR  
14AWG WIRE - OD 2.78MM MAX.  
16AWG WIRE - OD 2.42MM MAX.

FUNCTIONAL SYMBOLS	THIS DRAWING CONTAINS INFORMATION THAT IS PROPRIETARY TO MOLEX ELECTRONIC TECHNOLOGIES, LLC AND SHOULD NOT BE USED WITHOUT WRITTEN PERMISSION		CURRENT REV DESC:		<b>molex</b>
	△/A = 0	mm	SCALE	4:1	
DIVISIONAL SYMBOLS	GENERAL TOLERANCES (UNLESS SPECIFIED)		EC NO: 637452		MINI-FIT MAX RECEPT CRIMP TML
	△/E = 0	ANGULAR TOL ± °		DRWN: SCHEN76 2020/04/24	
	△/F = 0	4 PLACES ±	2020/05/13		
	△/G = 0	3 PLACES ±	CHK'D: YXZHENG 2020/05/13		
	△/H = 0	2 PLACES ± 0.25	APPR: YXZHENG 2020/05/13		
DRAFT WHERE APPLICABLE MUST REMAIN WITHIN DIMENSIONS		THIRD ANGLE PROJECTION	DRAWING	SERIES	DOCUMENT NUMBER
			A3-SIZE	212515	2125150001-SD
					DOC TYPE
					PSD
					DOC PART
					000
					REVISION
					A
					SHEET NUMBER
					1 OF 1