

3.40MM COEUR SENTRALITY HIGH CURRENT CONNECTOR SYSTEM

SOCKETS	
Press-Fit – Standard Option	SMT – Standard Option
Series: 204316	Series: 204318 ; 212194
	
Press-Fit – With 1.00mm Float	SMT – With 1.00mm Float
Series: 204313	Series: 204365 ; 212195
	

[COEUR HIGH – CURRENT INTERCONNECT SYSTEM](#)

[TABLE OF CONTENTS](#)



REVISION:	ECM INFORMATION:	TITLE:				SHEET No.
D	EC No: 739458 DATE: 2023/03/27	PRODUCT SPECIFICATION 3.40MM COEUR SENTRALITY				1 of 18
DOCUMENT NUMBER:	DOC TYPE:	DOC PART:	CREATED / REVISED BY:	CHECKED BY:	APPROVED BY:	
2043130018-PS	PS	000	JAYK1	BPISZCZOR	BPISZCZOR	
<small>TEMPLATE FILENAME: 1703070003 REV A</small>						

PINS

Press-Fit

Series: [203263](#)



Standard SMT

Series: [203263](#)



Screw Mount

Series: [203263](#)



214336 – Custom Male Pins

[COEUR HIGH – CURRENT INTERCONNECT SYSTEM](#)

[TABLE OF CONTENTS](#)



REVISION: D	ECM INFORMATION: EC No: 739458 DATE: 2023/03/27	TITLE: PRODUCT SPECIFICATION 3.40MM COEUR SENTRALITY	SHEET No. 2 of 18		
DOCUMENT NUMBER: 2043130018-PS	DOC TYPE: PS	DOC PART: 000	CREATED / REVISED BY: JAYK1	CHECKED BY: BPISZCZOR	APPROVED BY: BPISZCZOR
TEMPLATE FILENAME: 1703070003 REV A					

Table of Contents

<u>ITEMS</u>	<u>PAGE</u>
1.0 SCOPE	4
2.0 PRODUCT DESCRIPTION	4
2.1 DESCRIPTION, SERIES NUMBER, AND LINKS	4
2.2 DIMENSIONS, MATERIALS, PLATINGS	5
2.3 ENVIRONMENTAL CONFORMANCE	5
2.4 SAFETY AGENCY APPROVALS	5
3.0 APPLICABLE DOCUMENTS AND SPECIFICATION	6
3.1 MOLEX DOCUMENTS	6
3.2 INDUSTRY DOCUMENTS	7
4.0 ELECTRICAL PERFORMANCE RATINGS	7
4.1 VOLTAGE	7
4.2 CURRENT CAPABILITY **	7
4.3 RESISTANCE	12
4.4 TEMPERATURE	12
4.5 DURABILITY	13
5.0 QUALIFICATION	13
6.0 PERFORMANCE	13
6.1 ELECTRICAL PERFORMANCE	13
6.2 MECHANICAL PERFORMANCE	14
6.3 ENVIRONMENTAL PERFORMANCE	15
7.0 TEST SEQUENCE	16
7.1 RELIABILITY TEST SEQUENCES PER EIA-364-1000	16
7.2 MECHANICAL TEST SEQUENCES	17
7.3 TEMPERATURE RISE TEST SEQUENCES	17
8.0 PACKAGING	18

COEUR HIGH – CURRENT INTERCONNECT SYSTEM

TABLE OF CONTENTS



REVISION: D	ECM INFORMATION: EC No: 739458 DATE: 2023/03/27	TITLE: PRODUCT SPECIFICATION 3.40MM COEUR SENTRALITY	SHEET No. 3 of 18
DOCUMENT NUMBER: 2043130018-PS	DOC TYPE: PS	DOC PART: 000	CREATED / REVISED BY: JAYK1
	CHECKED BY: BPISZCZOR	APPROVED BY: BPISZCZOR	
TEMPLATE FILENAME: 1703070003 REV A			

1.0 SCOPE

The Product Specification covers the reliability test data of family 3.40mm COEUR SENTRALITY High Power interconnect systems which consists of various mounting options.

2.0 PRODUCT DESCRIPTION

The 3.40mm COEUR SENTRALITY High Power Interconnect System Connector is a single circuit connector system with available 1.00mm of actual float for high power busbar and PCB applications. The power circuit terminals are terminated to a busbar and / or PCB and uses a gold mating to silver interface with a terminal tarnish protection lubricant.

2.1 DESCRIPTION, SERIES NUMBER, AND LINKS

This specification covers the performance requirements and test methods for the following products listed by series:

SOCKETS		
Termination Style	Series Number	Packaging Type
Press-Fit Standard	204316	Tray
SMT Standard	204318	Tray
	212194	Tape & Reel
Press-Fit with Float	204313	Tray
SMT with Float	204365	Tray
	212195	Tape & Reel
		Tape & Reel

Pin	
Series	Termination Style
203263	Press-Fit
	Surface Mount
	Screw Mount

COEUR HIGH – CURRENT INTERCONNECT SYSTEM

[TABLE OF CONTENTS](#)



REVISION: D	ECM INFORMATION: EC No: 739458 DATE: 2023/03/27	TITLE: PRODUCT SPECIFICATION 3.40MM COEUR SENTRALITY	SHEET No. 4 of 18
DOCUMENT NUMBER: 2043130018-PS	DOC TYPE: PS	DOC PART: 000	CREATED / REVISED BY: JAYK1
		CHECKED BY: BPISZCZOR	APPROVED BY: BPISZCZOR
TEMPLATE FILENAME: 1703070003 REV A			

2.2 DIMENSIONS, MATERIALS, PLATINGS

1. Dimensions: Refer to sales drawing.
2. Material: RoHS compliant materials:
 - a. Power Male Pins: Copper Alloy.
 - b. Power Female Sockets:
 - i. Terminal Contacts: Copper Alloy.
 - ii. Components: Copper Alloy and Stainless Steel.
3. Plating:
 - a. Power Male Pins: Silver Plating with a Tarnish Inhibitor.
 - b. Power Female Sockets: Gold Plating for Terminal Contact (Mating Interference), Remaining Components are Silver Plated with Tarnish Inhibitor.
4. Refer to [2043131234-TS](#) for effects of tarnish on connector.

2.3 ENVIRONMENTAL CONFORMANCE

To find product compliance information:

- a. [Go to molex.com](#)
- b. Enter the part number in the search field.
- c. At the bottom of the page go to “Environmental” to see compliance status.

2.4 SAFETY AGENCY APPROVALS



2.4.1 ^C ^{US} File Number*: 70184994

CSA approval meets following standards/test procedures:

- a) CSA STD. C22.2 No. 182.3-M1987
- b) UL-1977

* - “C” and “US” mark adjacent to CSA signifies that the product has been evaluated to the applicable CSA and ANSI/UL standards, for use in Canada and US respectively.

CSA
NON-current interruption
75 Amps @ 600V for standard interface 75 Amps @ 600V for floating interface

2.4.2 UL File Number: E29179

UL
NON-current interruption
75 Amps @ 600V for standard interface 75 Amps @ 600V for floating interface

COEUR HIGH – CURRENT INTERCONNECT SYSTEM

TABLE OF CONTENTS



REVISION: D	ECM INFORMATION: EC No: 739458 DATE: 2023/03/27	TITLE: PRODUCT SPECIFICATION 3.40MM COEUR SENTRALITY	SHEET No. 5 of 18
DOCUMENT NUMBER: 2043130018-PS	DOC TYPE: PS	DOC PART: 000	CREATED / REVISED BY: JAYK1
		CHECKED BY: BPISZCZOR	APPROVED BY: BPISZCZOR
TEMPLATE FILENAME: 1703070003 REV A			

3.0 APPLICABLE DOCUMENTS AND SPECIFICATION

3.1 MOLEX DOCUMENTS

3.40mm COEUR SENTRALITY High Power interconnect System Documents

Type	Termination Style	Sales Drawing	Packaging Drawing	Test Summary	Application Specification	
Socket	Press-Fit Standard	2043160018-SD	2043180018-PK	2043130018-TS	2043130018-AS	
	SMT Standard	2043180018-SD				
		2043185018-SD				
		2043180118-SD				
		2121940018-SD				2121940018-PK
		2121945018-SD				
		2121940118-SD	2121940118-PK			
	Press-Fit with Float	2043130018-SD	2043130018-PK			
	SMT with Float	2043650018-SD				
		2043655018-SD				
		2121950018-SD	2121950018-PK			
		2121950018-SD				
2121950020-SD		2121955118-PK				
Pin	Press-Fit	2032630034-SD	2032630006-PK			
	Surface Mount	2032631134-SD	2032630006-PK			
	Screw Mount	2032638034-SD	2032630006-PK			

Additional Reference Documents

- Product Specification of 6.00mm COEUR Sentrality (Pin and Socket) – [2043130006-PS](#)
- Product Specification of 6.00mm PowerWize W-t-B Connector System – [2119410000-PS](#)
- Product Specification of 8.00mm COEUR Sentrality (Pin and Socket) – [2043130001-PS](#)
- Product Specification of 8.00mm PowerWize W-t-B Connector System – [2046000001-PS](#)
- Product Specification of 11.00mm COEUR Sentrality (Pin and Socket) – [2138800001-PS](#)

Other General Molex Documents

- [Molex Solderability Specification SMES-152](#)
- [Molex Heat Resistance Specification AS-40000-5013](#)
- [Molex Moisture Technical Advisory AS-45499-001](#)
- [Molex Package Handling Specification 454990100-PK](#)

COEUR HIGH – CURRENT INTERCONNECT SYSTEM

TABLE OF CONTENTS



REVISION: D	ECM INFORMATION: EC No: 739458 DATE: 2023/03/27	TITLE: PRODUCT SPECIFICATION 3.40MM COEUR SENTRALITY	SHEET No. 6 of 18		
DOCUMENT NUMBER: 2043130018-PS	DOC TYPE: PS	DOC PART: 000	CREATED / REVISED BY: JAYK1	CHECKED BY: BPISZCZOR	APPROVED BY: BPISZCZOR
TEMPLATE FILENAME: 1703070003 REV A					

3.2 INDUSTRY DOCUMENTS

EIA-364-1000
 UL-60950-1
 CSA STD. C22.2 NO. 182.3-M1987

4.0 ELECTRICAL PERFORMANCE RATINGS

4.1 VOLTAGE

600 Volts

Connector Rating per UL-1977

Connector voltage rating meets the connector approval level defined by UL 1977, Sect. 11 for spacing per table 11.1. Example: 1.2 mm for ≤ 250 volt; 3.2 mm for ≥ 250 volt.

Exception taken for spacing less than those specified are permitted, if the device complies with the requirements in the dielectric voltage withstanding test per Sect. 17.

Application Voltage Guideline

For application voltage requirements per UL-60950 or other standards, the creepage & clearance also needs to be determined based upon pads/traces on the PCB.

4.2 CURRENT CAPABILITY **

See Temperature vs. Current and Voltage Drop vs. Current charts below for applicable current rating per application.

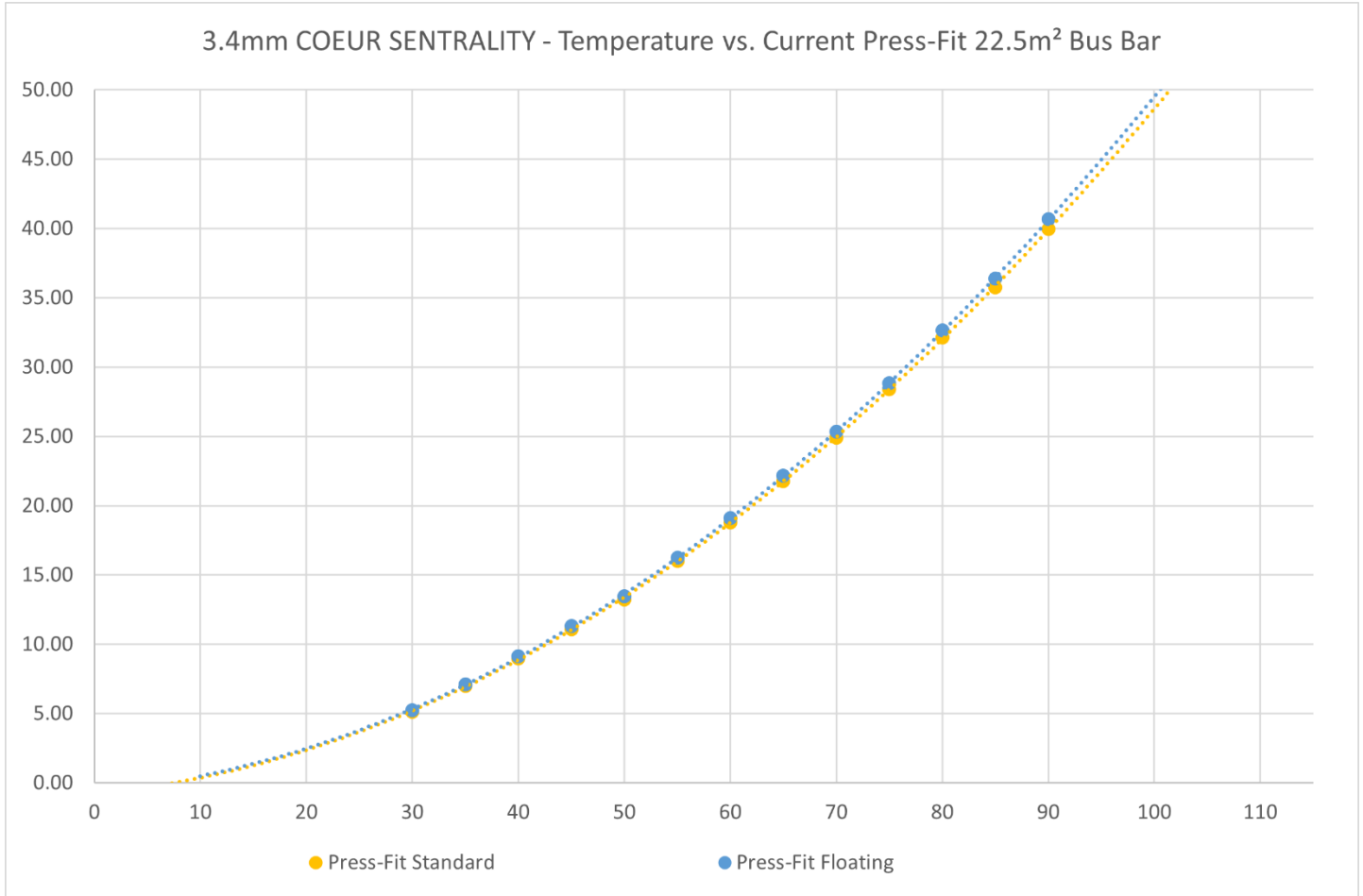
** Current rating is application dependent. Above rating is only a guideline. Appropriate de-rating is required per ambient conditions, copper weight of PCB, gross heating from adjacent modules/components, and other factors that influence connector performance.

COEUR HIGH – CURRENT INTERCONNECT SYSTEM

TABLE OF CONTENTS



REVISION: D	ECM INFORMATION: EC No: 739458 DATE: 2023/03/27	TITLE: PRODUCT SPECIFICATION 3.40MM COEUR SENTRALITY	SHEET No. 7 of 18		
DOCUMENT NUMBER: 2043130018-PS	DOC TYPE: PS	DOC PART: 000	CREATED / REVISED BY: JAYK1	CHECKED BY: BPISZCZOR	APPROVED BY: BPISZCZOR
TEMPLATE FILENAME: 1703070003 REV A					



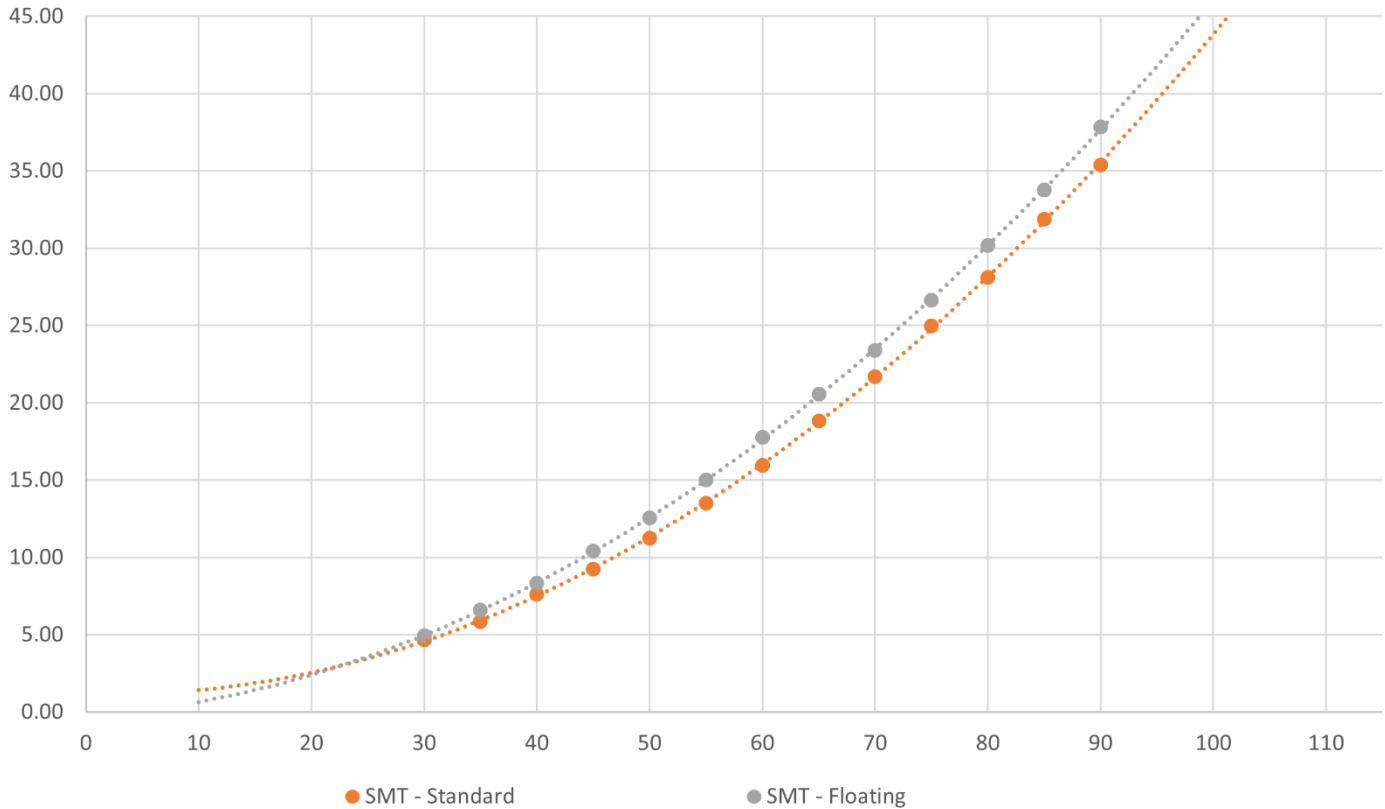
COEUR HIGH – CURRENT INTERCONNECT SYSTEM

[TABLE OF CONTENTS](#)



REVISION: D	ECM INFORMATION: EC No: 739458 DATE: 2023/03/27	TITLE: PRODUCT SPECIFICATION 3.40MM COEUR SENTRALITY	SHEET No. 8 of 18		
DOCUMENT NUMBER: 2043130018-PS	DOC TYPE: PS	DOC PART: 000	CREATED / REVISED BY: JAYK1	CHECKED BY: BPISZCZOR	APPROVED BY: BPISZCZOR
TEMPLATE FILENAME: 1703070003 REV A					

3.4mm COEUR SENTRALITY - Temperature vs. Current SMT 22.5mm² Bus Bar



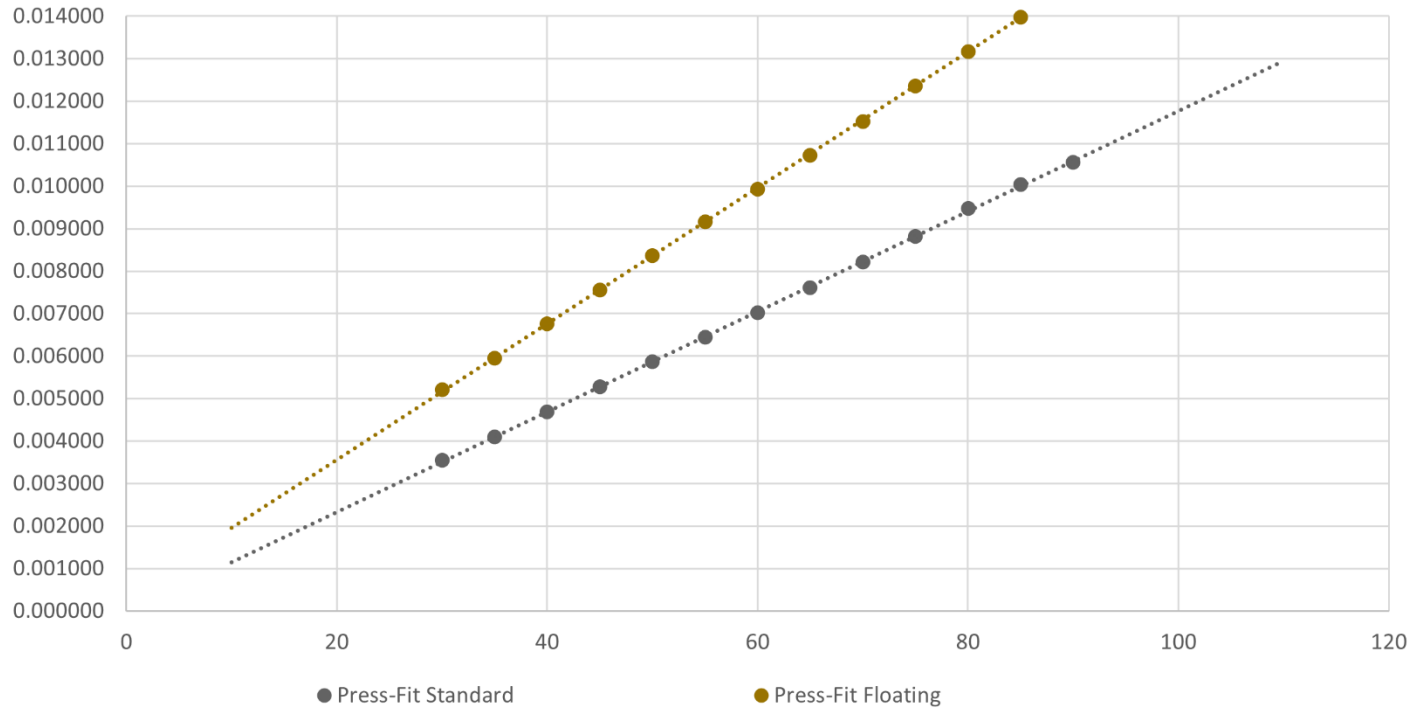
COEUR HIGH – CURRENT INTERCONNECT SYSTEM

[TABLE OF CONTENTS](#)



REVISION: D	ECM INFORMATION: EC No: 739458 DATE: 2023/03/27	TITLE: PRODUCT SPECIFICATION 3.40MM COEUR SENTRALITY	SHEET No. 9 of 18
DOCUMENT NUMBER: 2043130018-PS	DOC TYPE: PS	DOC PART: 000	CREATED / REVISED BY: JAYK1
		CHECKED BY: BPISZCZOR	APPROVED BY: BPISZCZOR
TEMPLATE FILENAME: 1703070003 REV A			

3.4mm COEUR SENTRALITY - Voltage Drop Profile 22.5mm² Press-Fit



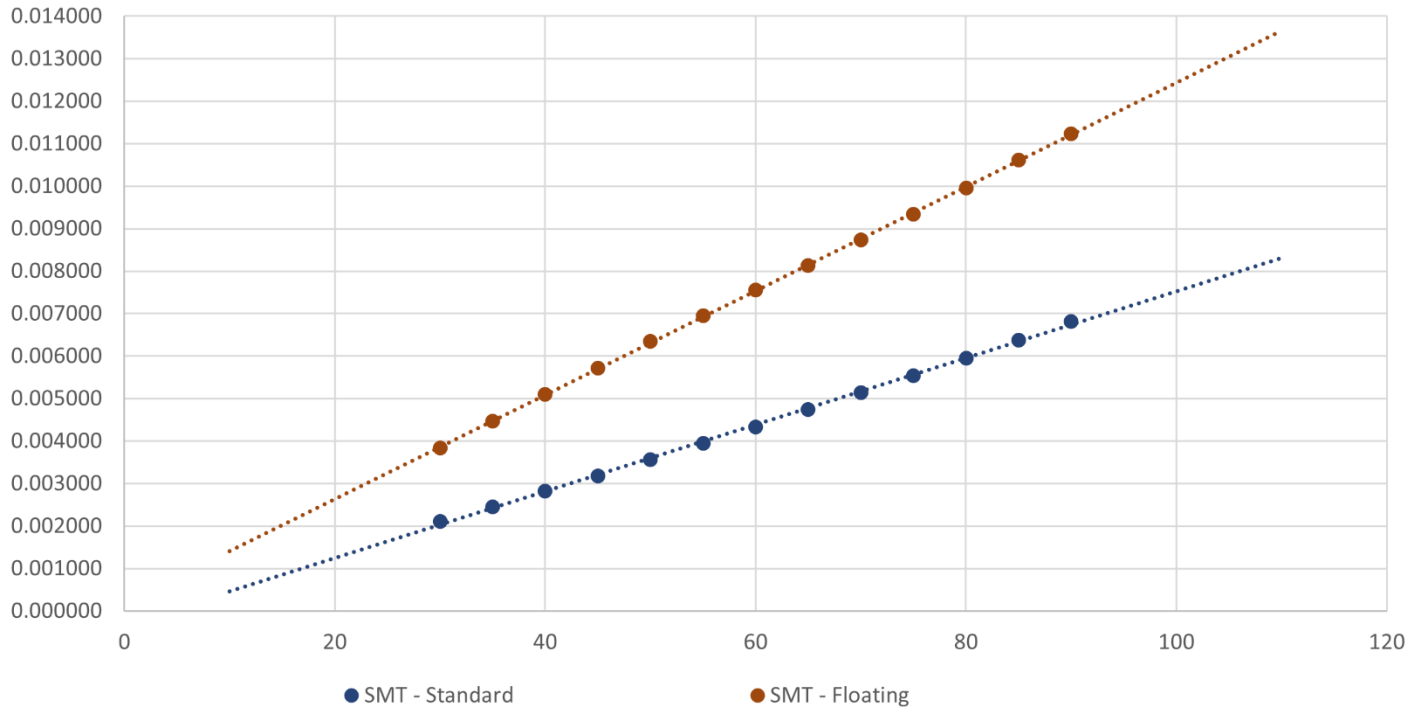
COEUR HIGH – CURRENT INTERCONNECT SYSTEM

[TABLE OF CONTENTS](#)



REVISION: D	ECM INFORMATION: EC No: 739458 DATE: 2023/03/27	TITLE: PRODUCT SPECIFICATION 3.40MM COEUR SENTRALITY	SHEET No. 10 of 18
DOCUMENT NUMBER: 2043130018-PS	DOC TYPE: PS	DOC PART: 000	CREATED / REVISED BY: JAYK1
		CHECKED BY: BPISZCZOR	APPROVED BY: BPISZCZOR
TEMPLATE FILENAME: 1703070003 REV A			

3.4mm COEUR SENTRALITY - Voltage Drop Profile 22.5mm² SMT



COEUR HIGH – CURRENT INTERCONNECT SYSTEM

[TABLE OF CONTENTS](#)

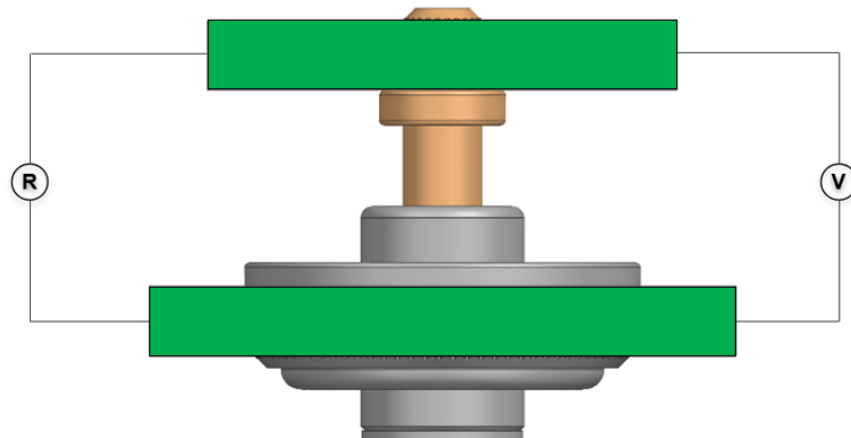


REVISION: D	ECM INFORMATION: EC No: 739458 DATE: 2023/03/27	TITLE: PRODUCT SPECIFICATION 3.40MM COEUR SENTRALITY	SHEET No. 11 of 18
DOCUMENT NUMBER: 2043130018-PS	DOC TYPE: PS	DOC PART: 000	CREATED / REVISED BY: JAYK1
		CHECKED BY: BPISZCZOR	APPROVED BY: BPISZCZOR
TEMPLATE FILENAME: 1703070003 REV A			

4.3 RESISTANCE

0.25 milliohm (Nominal).

All resistance values are nominal, From Male Pin Board – to – Socket Board, values including connector bulk resistance and contact resistance.



4.4 TEMPERATURE

Operating Temperature Range (includes T-Rise from applied current) : - 40 °C to + 125 °C
 Storage / Non-Operating Temperature Range : - 40 °C to + 85 °C

Field Temperature and Field Life: Temperature life tested per **EIA 364-17** Method A for **114 hrs@125° C** per table 8 to meet field temperature of **85° C for 10 years life***.

Further testing completed per USCAR-2 Rev6 for 1008 hrs@150°C. See [2043131000-TS](#).

***Note:**

Temperature life tested per EIA 364-17 Method A for 114 hrs. @ 125 °C per table – 8.
 Temperature life test duration ([section 6.3 item 1](#)) is based on the assumption that the contact spends **1/3** of its field life at that temperature which is **85° C** and its remaining life at **40 °C** or less.
 (Based on EIA-364-1000, table 8)

COEUR HIGH – CURRENT INTERCONNECT SYSTEM

TABLE OF CONTENTS



REVISION: D	ECM INFORMATION: EC No: 739458 DATE: 2023/03/27	TITLE: PRODUCT SPECIFICATION 3.40MM COEUR SENTRALITY	SHEET No. 12 of 18		
DOCUMENT NUMBER: 2043130018-PS	DOC TYPE: PS	DOC PART: 000	CREATED / REVISED BY: JAYK1	CHECKED BY: BPISZCZOR	APPROVED BY: BPISZCZOR
TEMPLATE FILENAME: 1703070003 REV A					

4.5 DURABILITY

Plating Type	Number of Cycles
Gold Plated – Socket Contact Silver Plated – Pin Surface	200*

**Mechanical / Non – Environmental Durability.*

**Based on EIA-364-1000.01 test method C section 7.*

As tested in accordance with EIA-364-1000 test method ([see section 6.2 item 5 of this specification](#)).

Durability per EIA-364-09

5.0 QUALIFICATION

Laboratory condition, sample selection and test sequences are in accordance with EIA-364-1000.

[See page 16](#) for detail test sequence of EIA-364-1000.01

6.0 PERFORMANCE

6.1 ELECTRICAL PERFORMANCE

ITEM	DESCRIPTION	TEST CONDITION	REQUIREMENT
6.1.1	Contact Resistance (Low Level) (EIA-364-23)	Mate connectors, apply maximum voltage of 20 mV and current of 100 mA	Maximum 0.25 mΩ
6.1.2	Voltage Drop @ RATED CURRENT	Mate connectors, apply maximum current of 75 amps.	See Charts; Section 4.0
6.1.3	Temperature Rise	Mate connectors & Measure T-Rise @ Rated Current after 96 Hours per EIA-364-70	30 °C T-Rise
6.1.4	Temperature Rise (Via Current Cycling)	Mate connectors: measure the temperature rise at the rated current after 96 hours (steady state) 240 hours (60 minutes ON and 30 minutes OFF per hour) 96 hours (steady state) Steady state per EIA-364-70, Method 2. Current cycling per EIA-364-55, Test Condition A, Test Method 4	30 °C T-Rise

COEUR HIGH – CURRENT INTERCONNECT SYSTEM

[TABLE OF CONTENTS](#)



REVISION: D	ECM INFORMATION: EC No: 739458 DATE: 2023/03/27	TITLE: PRODUCT SPECIFICATION 3.40MM COEUR SENTRALITY	SHEET No. 13 of 18
DOCUMENT NUMBER: 2043130018-PS	DOC TYPE: PS	DOC PART: 000	CREATED / REVISED BY: JAYK1
		CHECKED BY: BPISZCZOR	APPROVED BY: BPISZCZOR

6.2 MECHANICAL PERFORMANCE

ITEM	DESCRIPTION	TEST CONDITION	REQUIREMENT
6.2.1	Mating Force (EIA-364-37)	Mate connectors at a rate of 25.4 +/- 6 mm per minute.	20N Maximum
6.2.2	Unmating Force (EIA-364-37)	Unmate connectors at a rate of 25.4 +/- 6 mm per minute.	6N Minimum
6.2.3	Floater Displacement Force (Side Force)	Displacement Float Feature 1.50mm (0.75mm both directions off center)	10N Minimum 40N Maximum
6.2.4	Offset Mating Insertion Force into Floater	Mate and Unmate receptacle male power pin 10 times in the offset position	60N Maximum
6.2.5	Durability w/o Environment (EIA-364-09)	Mate connectors 200 cycles at a maximum rate of 10 cycles per minute.	No damage which would impair operation Maximum Change: 0.17 mΩ
6.2.6	Vibration (EIA-364-28)	Mate connectors and vibrate per EIA-364-28, test condition D 15 minutes each axis	Maximum Change: 0.17 mΩ No discontinuities greater than 1 μs
6.2.7	Mechanical Shock (EIA-364-27)	Mate connectors and shock at 50 g with ½ sine wave pulse (11 milliseconds) shocks in the X, Y, Z axis (18 shocks total)	Maximum Change: 0.17 mΩ No discontinuities greater than 1 μs

**COEUR HIGH – CURRENT INTERCONNECT
SYSTEM**

TABLE OF CONTENTS



REVISION: D	ECM INFORMATION: EC No: 739458 DATE: 2023/03/27	TITLE: PRODUCT SPECIFICATION 3.40MM COEUR SENTRALITY	SHEET No. 14 of 18
DOCUMENT NUMBER: 2043130018-PS	DOC TYPE: PS	DOC PART: 000	CREATED / REVISED BY: JAYK1
		CHECKED BY: BPISZCZOR	APPROVED BY: BPISZCZOR
TEMPLATE FILENAME: 1703070003 REV A			

6.3 ENVIRONMENTAL PERFORMANCE

ITEM	DESCRIPTION	TEST CONDITION	REQUIREMENT
6.3.1	Temperature Life (EIA-364-1000)	Mate Connectors, expose to 114 hours at 125 °C Per EIA-364-17 and EIA-364 TS-1000	Maximum Change: 0.17 mΩ
6.3.2	Thermal Shock (EIA-364-1000)	Mate connectors, expose to 10 cycles from -55 °C to 85 °C, dwell time for each extreme temperature is 30 minutes. Per EIA-364-32 Test Condition 1, Test Duration A-4	Maximum Change: 0.17 mΩ
6.3.3	Cyclic Temperature & Humidity (EIA-364-1000)	Mate connectors: 24 cycles at temperature 25 ± 3 °C at 80 ± 5% relative humidity and 65 ± 3 °C at 50 ± 5% relative humidity; dwell time of 1.0 hour; ramp time of 30 minutes. Per EIA-364-31	Maximum Change: 0.17 mΩ
6.3.4	Thermal Disturbance (EIA-364-1000)	Mate Connectors, cycle the connectors between 15 ± 3 °C and 85 ± 3 °C. Ramps should be a minimum of 2 °C per minute, and dwell times should ensure contacts reach the temperature extremes. Humidity is not controlled. 10 cycles Per EIA-364-110	Maximum Change: 0.17 mΩ
6.3.5	Mixed flowing Gas (EIA-364-1000)	Expose to MFG 224 hours unmated, 112 hours mated, Per EIA-364-65 Class IIA	Maximum Change: 0.17 mΩ
6.3.6	Dust Exposure (EIA-364-1000)	Unmate the connectors, expose the connector to Dust. Per EIA-364-91, Benign Dust Composition.	Maximum Change: 0.17 mΩ

COEUR HIGH – CURRENT INTERCONNECT SYSTEM

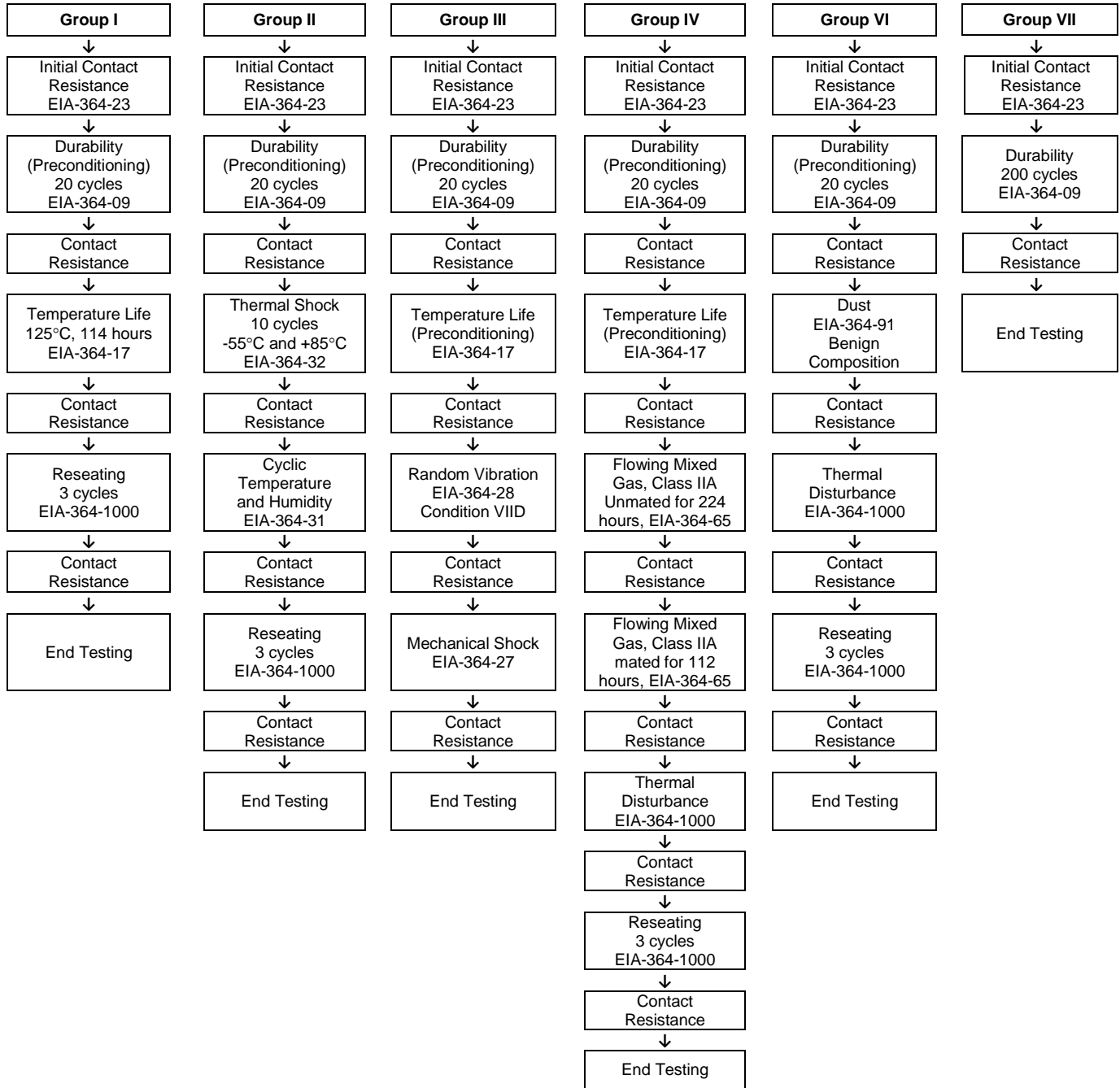
TABLE OF CONTENTS



REVISION: D	ECM INFORMATION: EC No: 739458 DATE: 2023/03/27	TITLE: PRODUCT SPECIFICATION 3.40MM COEUR SENTRALITY	SHEET No. 15 of 18
DOCUMENT NUMBER: 2043130018-PS	DOC TYPE: PS	DOC PART: 000	CREATED / REVISED BY: JAYK1
		CHECKED BY: BPISZCZOR	APPROVED BY: BPISZCZOR
TEMPLATE FILENAME: 1703070003 REV A			

7.0 TEST SEQUENCE

7.1 RELIABILITY TEST SEQUENCES PER EIA-364-1000



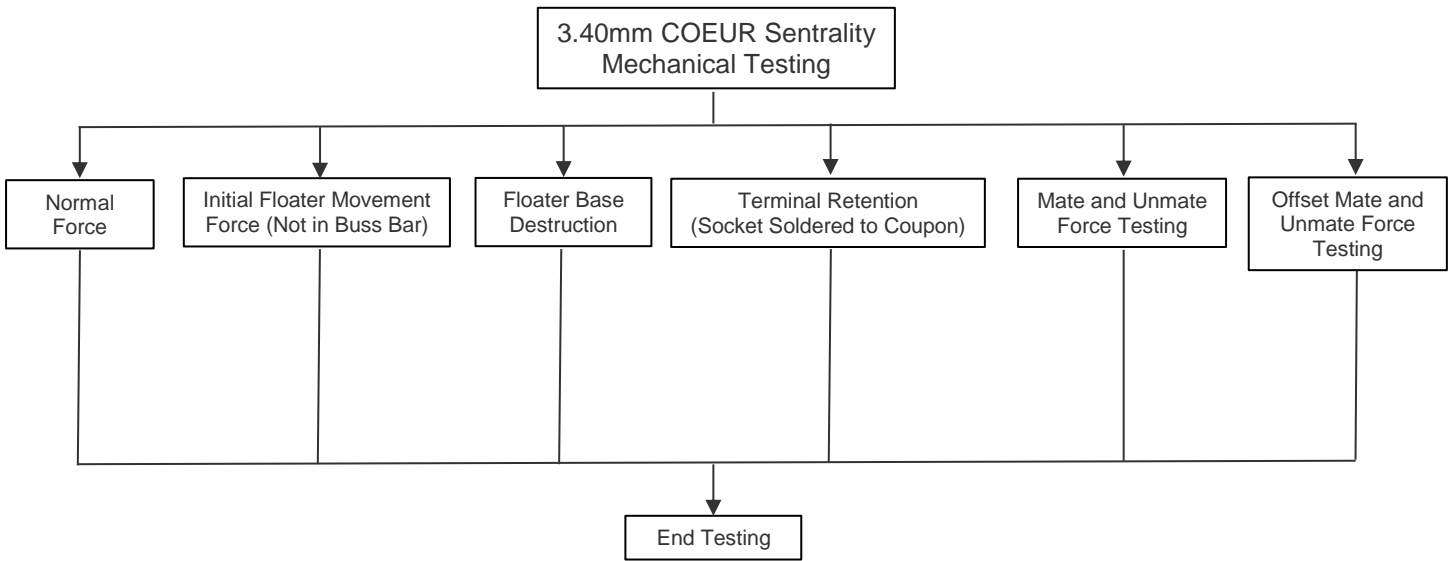
COEUR HIGH – CURRENT INTERCONNECT SYSTEM

TABLE OF CONTENTS

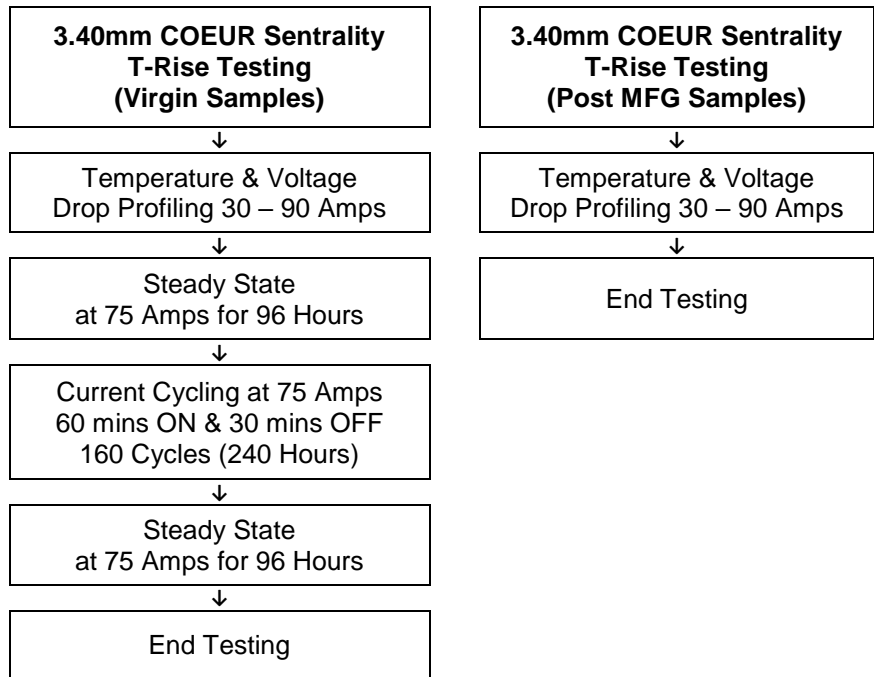


REVISION: D	ECM INFORMATION: EC No: 739458 DATE: 2023/03/27	TITLE: PRODUCT SPECIFICATION 3.40MM COEUR SENTRALITY	SHEET No. 16 of 18
DOCUMENT NUMBER: 2043130018-PS	DOC TYPE: PS	DOC PART: 000	CREATED / REVISED BY: JAYK1
		CHECKED BY: BPISZCZOR	APPROVED BY: BPISZCZOR
TEMPLATE FILENAME: 1703070003 REV A			

7.2 MECHANICAL TEST SEQUENCES



7.3 TEMPERATURE RISE TEST SEQUENCES



COEUR HIGH – CURRENT INTERCONNECT SYSTEM

TABLE OF CONTENTS



REVISION: D	ECM INFORMATION: EC No: 739458 DATE: 2023/03/27	TITLE: PRODUCT SPECIFICATION 3.40MM COEUR SENTRALITY	SHEET No. 17 of 18		
DOCUMENT NUMBER: 2043130018-PS	DOC TYPE: PS	DOC PART: 000	CREATED / REVISED BY: JAYK1	CHECKED BY: BPISZCZOR	APPROVED BY: BPISZCZOR
TEMPLATE FILENAME: 1703070003 REV A					

8.0 PACKAGING

Parts shall be packaging to protect the parts from damage during standard shipping, storage, and handling. Refer Molex.com specific part number webpage / Refer to table in the [section 3.1](#) to get the exact packaging document for that item.

COEUR HIGH – CURRENT INTERCONNECT SYSTEM

TABLE OF CONTENTS



REVISION: D	ECM INFORMATION: EC No: 739458 DATE: 2023/03/27	TITLE: PRODUCT SPECIFICATION 3.40MM COEUR SENTRALITY	SHEET No. 18 of 18		
DOCUMENT NUMBER: 2043130018-PS	DOC TYPE: PS	DOC PART: 000	CREATED / REVISED BY: JAYK1	CHECKED BY: BPISZCZOR	APPROVED BY: BPISZCZOR
TEMPLATE FILENAME: 1703070003 REV A					