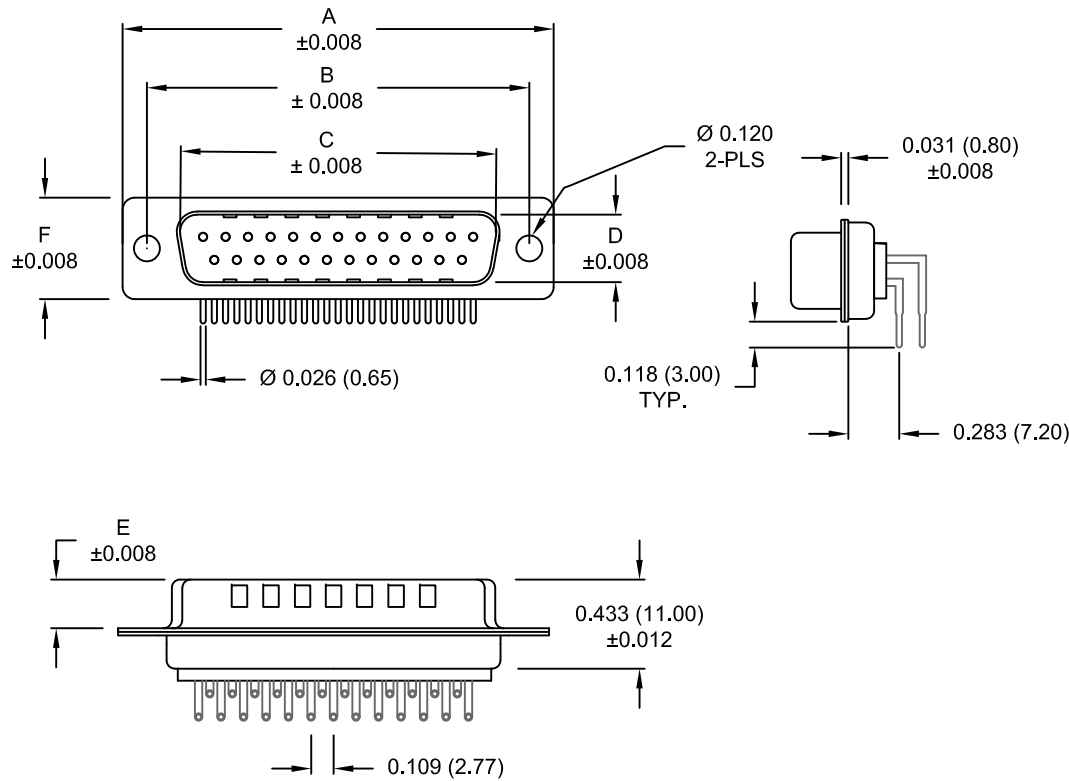


DESCRIPTION: MALE - 0.283 RIGHT ANGLE / MACHINED - ECONOMY



DIMENSIONS						
No. OF PINS	A	B	C	D	E	F
9	1.213	0.984	0.665	0.327	0.240	0.492
	30.80	25.00	16.90	8.30	6.10	12.50
15	1.543	1.311	0.994	0.327	0.240	0.492
	39.20	33.30	25.25	8.30	6.10	12.50
25	2.089	1.852	1.533	0.327	0.240	0.492
	53.05	47.05	38.95	8.30	6.10	12.50
37	2.732	2.500	2.181	0.327	0.240	0.492
	69.40	63.50	55.40	8.30	6.10	12.50
50	2.638	2.402	2.079	0.429	0.236	0.602
	67.00	61.00	52.80	10.90	6.00	15.30

**173-EYY-11YRY1**

SERIES \_\_\_\_\_  
 POSITIONS \_\_\_\_\_  
 E09  
 E15  
 E25  
 E37  
 E50  
 GENDER \_\_\_\_\_  
 1 = MALE  
 TERMINATION \_\_\_\_\_  
 1 = PC MOUNTING  
 SHELL PLATING \_\_\_\_\_  
 3 = NICKEL (GROUND INDENTS)  
 RoHS COMPLIANT \_\_\_\_\_  
 HARDWARE OPTIONS \_\_\_\_\_  
 00 = NO HARDWARE  
 0A = 0.098" CLINCH NUT (BOARD SIDE)  
 14 = SHORT BRACKET WITH 4-40 SCREW LOCK  
 24 = SHORT BRACKET WITH 4-40 SCREW  
 46 = BRACKET WITH 4-40 INSERT & BOARDLOCK  
 PLATING OPTIONS \_\_\_\_\_  
 1 = GOLD FLASH  
 2 = 30MICRO-INCH GOLD  
 3 = 50MICRO-INCH GOLD

**MATERIAL:**

SHELL: STEEL, NICKEL PLATED  
 INSULATOR: UL 94V-O RATED, WHITE PA6T  
 PROCESS TEMP.: 260° PROCESS TEMPERATURE  
 CONTACT: PRECISION MACHINED COPPER ALLOY

**ELECTRICAL:**

CURRENT RATING: 5 AMPS  
 CONTACT RESISTANCE: 10 mOhms Max.  
 INSULATION RESISTANCE: 5 G Ohms min.  
 VOLTAGE: 1000 V AC FOR 1 MINUTE  
 TEMPERATURE: -55° C TO +125° C

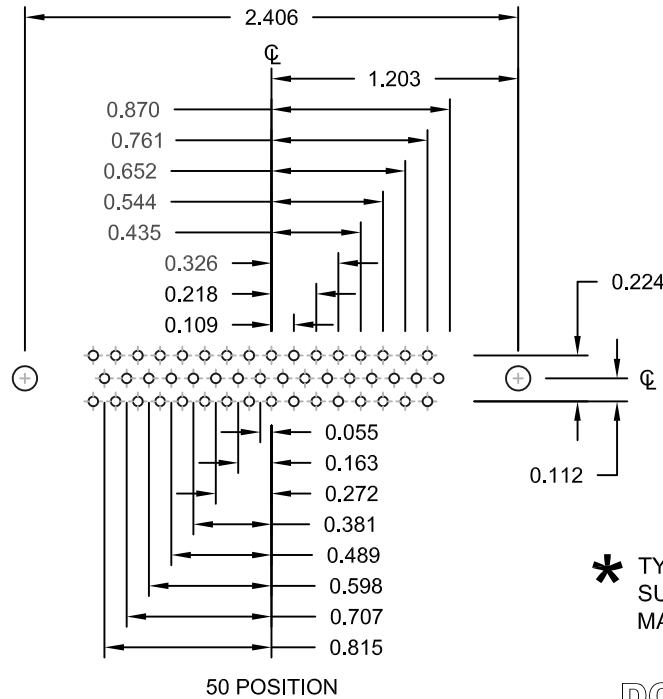
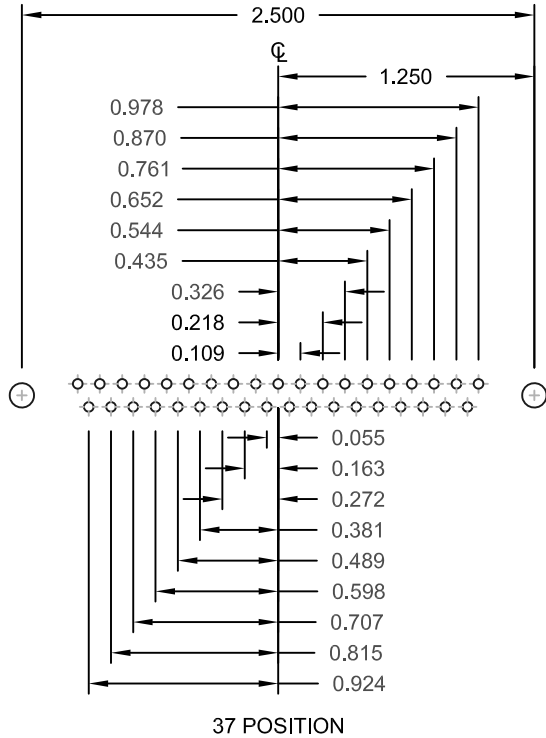
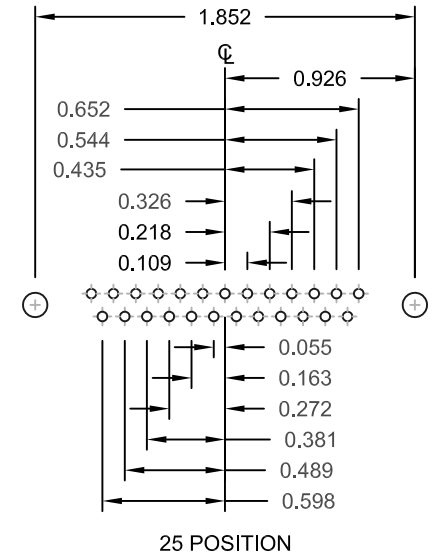
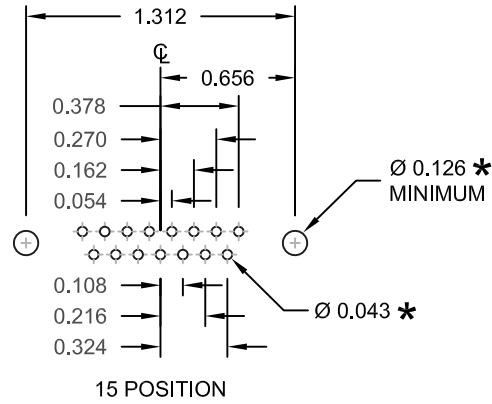
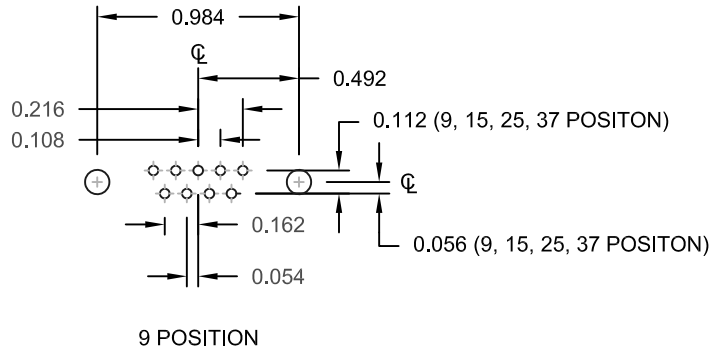
UNITS = inch [mm]

**DO NOT SCALE FROM DRAWING**

	THESE DRAWINGS AND SPECIFICATIONS ARE THE PROPERTY OF NorComp AND SHALL NOT BE REPRODUCED, COPIED OR USED AS THE BASIS FOR THE MANUFACTURE OF SALE OF APPARATUS WITHOUT WRITTEN PERMISSION.		DRAWN: <b>PAM JENKINS</b>	DATE: <b>11-28-05</b>
	NorComp		SCALE: NTS	SHEET 1 OF 3
DWG NO. <b>173-EYY-11YRY1</b>				

**RoHS COMPLIANT**

DESCRIPTION: PCB LAYOUT - STANDARD "D" - MALE & FEMALE



UNITS = inch

\* TYP. SUGGESTED SIZE MAY NOT BE SUITABLE FOR ALL APPLICATIONS

DO NOT SCALE FROM DRAWING



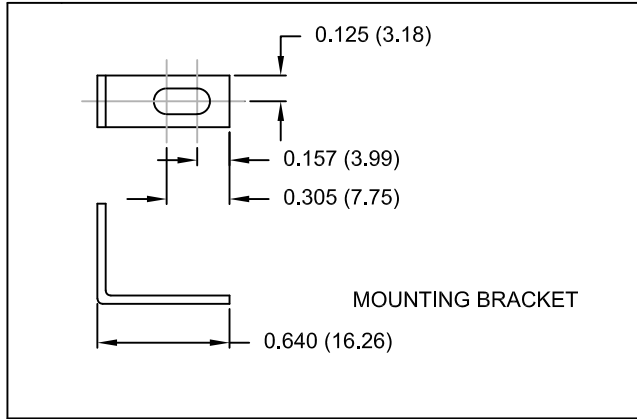
THESE DRAWINGS AND SPECIFICATIONS ARE THE PROPERTY OF NorComp AND SHALL NOT BE REPRODUCED, COPIED OR USED AS THE BASIS FOR THE MANUFACTURE OF SALE OF APPARATUS WITHOUT WRITTEN PERMISSION.

DRAWN: PAM JENKINS		DATE: 11-28-05	
SCALE: NTS	SHEET 2	OF 3	REV 18
DWG NO. 173-EYY-11YRY1			

NorComp

DESCRIPTION: CLINCH NUT HARDWARE

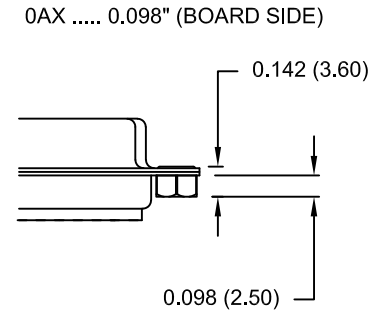
REPLACE -YY IN LAST 3 DIGITS WITH OPTION CHOSEN



MOUNTING BRACKET

14Y = SHORT BRACKET & 4-40 FEMALE HEX SOCKET  
24Y = SHORT BRACKET & 4-40 SCREW

CLINCH-NUT HAS 4-40 INTERNAL THREADS

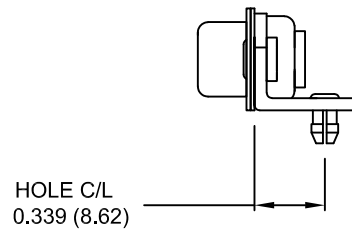


MATERIAL: COLD ROLLED STEEL

PLATING: CLEAR ZINC

46Y = BRACKET WITH 4-40 INSERT AND BOARDLOCK

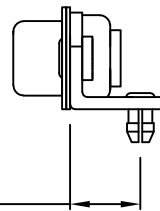
9-37 POSITION CONNECTOR BRACKET



HOLE C/L

50 POSITION CONNECTOR BRACKET

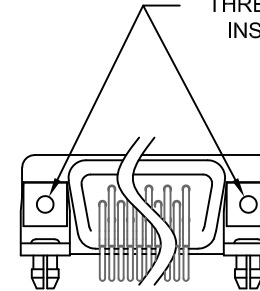
NOTE: LOCATOR PLATE PRESENT ON 50 PIN ONLY



HOLE C/L

BRACKETS MOUNTED ON CONNECTOR

#4-40 THREADED INSERT



UNITS = inch [mm]

DO NOT SCALE FROM DRAWING



THESE DRAWINGS AND SPECIFICATIONS ARE THE PROPERTY OF NorComp AND SHALL NOT BE REPRODUCED, COPIED OR USED AS THE BASIS FOR THE MANUFACTURE OF SALE OF APPARATUS WITHOUT WRITTEN PERMISSION.

DRAWN: PAM JENKINS

DATE: 11-28-05

NorComp

SCALE: NTS SHEET 3 OF 3 REV 18

DWG NO. 173-EYY-11YRY1

RoHS COMPLIANT