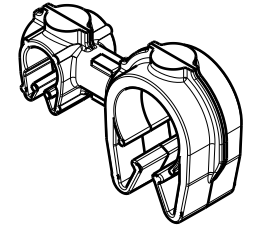
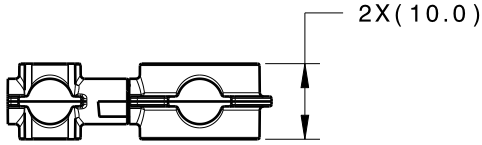
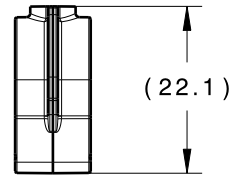
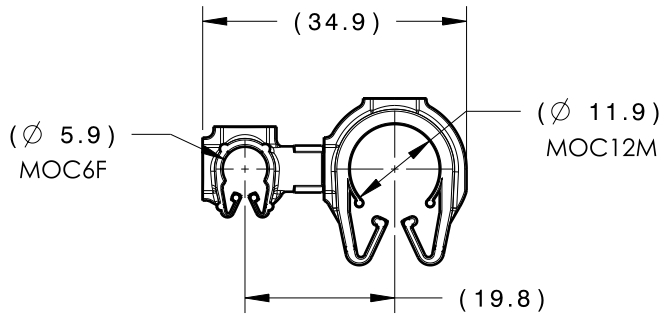


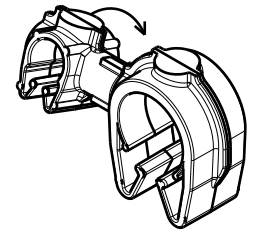
Revision Level			Revision Record	Changed	Date	Approved	Date
Drawing	State	Part					
01.2	DESIGN RELEASE		SEE ECN# 014407	FDS	4/20/18	EJH	4/20/18



ISOMETRIC VIEW



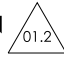
CLIPS ROTATE 360 DEGREES



ISOMETRIC VIEW ROTATED

TYPE	MOC6F	MOC12M
HARNESS	5.5MM-6.5MM	11.5MM-13.0MM
HOSE	5.5MM-6.5MM	10.5MM-13.0MM
HARD PIPE/TUBE	6.0MM-6.8MM	12.0MM-13.8MM

*RECOMMENDED SIZES MAY DIFFER DEPENDING ON THE APPLICATION, PRODUCT REQUIREMENTS AND MATERIALS USED

GLOBAL PART DESCRIPTION 	MOC6F			MOC12M		
	DRAWING	MATERIAL	COLOR	DRAWING	MATERIAL	COLOR
MOC6FMOC12M-PA66HIRHS-BK	16-0314-000-CSU	PA66HIRHS	BLACK	16-0319-000-CSU	PA66HIRHS	BLACK

Material SEE CHART COLOR: SEE CHART	Units	millimeters	The copyright of this drawing is reserved by HellermannTyton. It is issued on condition that it is not reproduced, copied or disclosed to a third party, either wholly or in part, without the consent of HellermannTyton.	Drawn	TAT	2/21/17	Article/Type-No MOC6FMOC12M	Scale	1:1	
	Tolerance defined on each dimension	Approved		EJH	2/28/17	Title  6MM MOC COUPLED TO A 12MM MOC		Project Number	16-0326	
		HellermannTyton North America Email: corp@htamericas.com Web: www.hellermann.tyton.com			Drawing-No		PRODUCTION : Phase	Format	AH	
								16-0326-139-CSU 	Sheet	1/1