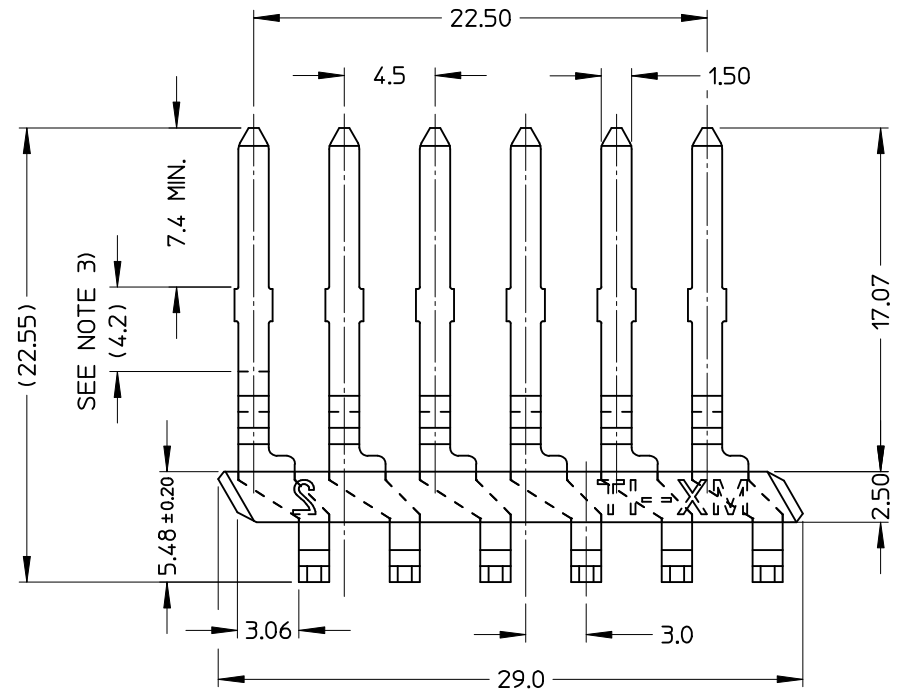
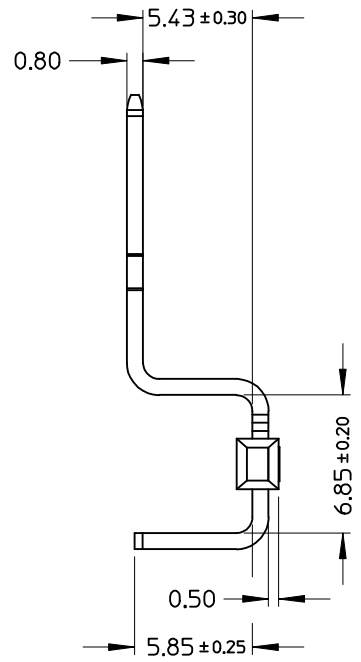
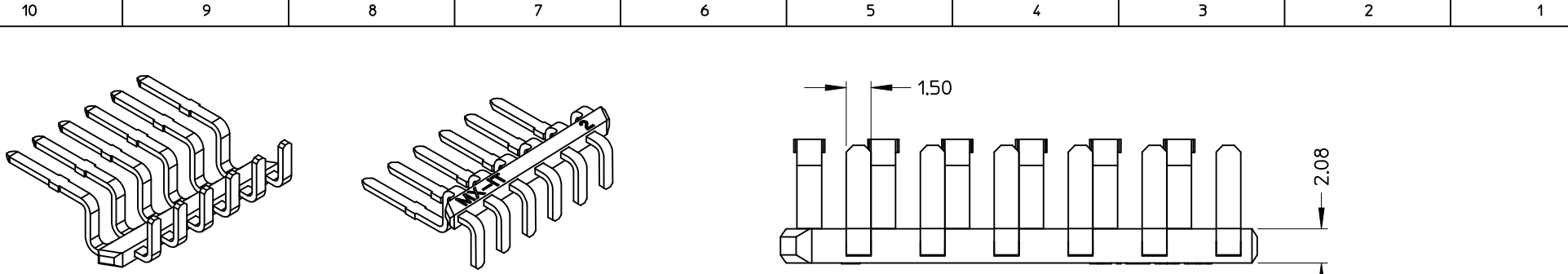


- NOTES:
- CONTACT MATERIAL: COPPER ALLOY UNS C21000  
TIN POST PLATED 5-8um
  - HOUSING MATERIAL: BLACK LCP G.F.
  - BARE EDGE AND 0.30 MAX CUTOFF BURR OR UNDERCUT ALLOWABLE IN THIS LOCATION
  - PACKAGING: IN CARTON BOXES (400 CONNECTORS/BOX).  
8 BOXES INTO A SHIPPING CARTON FOR TOTAL 3200 CONNECTORS (STD. PACKING QUANTITY)

STD. DESCR.: 6 CKT CONNECTOR

EC NO: Z2008-0142 DRWN: SBARBIER 2008/03/18 CHKD: LSANTOSSO 2008/03/18 APPR: FBISELLO 2008/03/27	QUALITY SYMBOLS ▽=0 ◻=0	GENERAL TOLERANCES (UNLESS SPECIFIED)		DIMENSION STYLE <b>MM ONLY</b>	SCALE <b>4:1</b>	DESIGN UNITS <b>METRIC</b>	FIRST ANGLE PROJECTION	
		4 PLACES ± --- ± ---	DRAWN BY SBARBIER	DATE 2008/03/13	TITLE <b>6 CKT HEADER</b>			
		3 PLACES ± --- ± ---	CHECKED BY LSANTOSSO	DATE 2008/03/13	MATERIAL NO. <b>94241-1006</b>			
		2 PLACES ± 0.15 ± --- 1 PLACE ± 0.2 ± ---	APPROVED BY FBISELLO	DATE 2008/03/13	DOCUMENT NO. <b>SD-94241-001</b>			
A	DESCRIPTION DRAFT WHERE APPLICABLE MUST REMAIN WITHIN DIMENSIONS	SIZE <b>A3</b>	THIS DRAWING CONTAINS INFORMATION THAT IS PROPRIETARY TO MOLEX INCORPORATED AND SHOULD NOT BE USED WITHOUT WRITTEN PERMISSION					



- NOTES:
- CONTACT MATERIAL: COPPER ALLOY UNS C21000  
TIN POST PLATED 5-8um
  - HOUSING MATERIAL: BLACK LCP G.F.
  - BARE EDGE AND 0.30 MAX CUTOFF BURR OR UNDERCUT ALLOWABLE IN THIS LOCATION
  - PACKAGING: IN CARTON BOXES (400 CONNECTORS/BOX).  
8 BOXES INTO A SHIPPING CARTON FOR TOTAL 3200 CONNECTORS (STD. PACKING QUANTITY)

STD. DESCR.: 6 CKT CONNECTOR

EC NO: Z2008-0142 DRWN: SBARBIER 2008/03/18 CHKD: LSANTOSSO 2008/03/18 APPR: FBISELLO 2008/03/27	QUALITY SYMBOLS	GENERAL TOLERANCES (UNLESS SPECIFIED)		DIMENSION STYLE	SCALE	DESIGN UNITS	FIRST ANGLE PROJECTION	
	$\nabla=0$ $\sphericalangle=0$	mm	INCH	MM ONLY	4:1	METRIC		
		4 PLACES ± ---	± ---	DRAWN BY	DATE	TITLE		6 CKT HEADER
		3 PLACES ± ---	± ---	SBARBIER	2008/03/13			
	2 PLACES ± 0.15	± ---	CHECKED BY	DATE				
	1 PLACE ± 0.2	± ---	LSANTOSSO	2008/03/13				
		ANGULAR ± 3 °	APPROVED BY	DATE				
			FBISELLO	2008/03/13				
			MATERIAL NO.		DOCUMENT NO.			
			94241-1006		SD-94241-001			
			SIZE A3		THIS DRAWING CONTAINS INFORMATION THAT IS PROPRIETARY TO MOLEX INCORPORATED AND SHOULD NOT BE USED WITHOUT WRITTEN PERMISSION			
			DRAFT WHERE APPLICABLE MUST REMAIN WITHIN DIMENSIONS					