

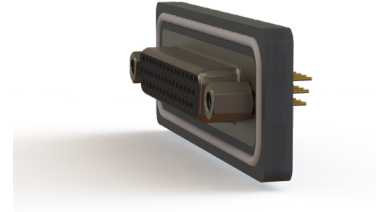
# 637W/638W SERIES



## Waterproof HD D-Sub Connectors: Straight

### Features:

- High density waterproof D-Sub
- 0.090"(2.29mm) contact spacing x 0.078"(1.98mm) row spacing
- Plug and receptacle in 15, 26 or 44 contact sizes
- Pin and socket contact mating design with straight P.C. tail or solder cup termination
- Plug shell indents provide grounding and additional mating retention
- Mounting options for panel mount or connector mating include threaded inserts or threaded standoffs
- D-shaped connector mating outline provides polarization
- Degree of protection: IP67 as per IEC60529



### Specifications:

Insulator Material	PBT Thermoplastic with 30% Glass Filled, UL 94V-0 Rated, Black color
Contact Material	Pins and Sockets: Copper Alloy
Contact Plating	Gold Plating over Nickel underplating
Shell Material	Nickel Plated Steel
Epoxy Sealant	Epoxy
O-Ring	Silicone
Current Rating	3 amps Per Contact
Contact Resistance	10 Milliohms maximum
Dielectric Withstanding Voltage	5000 megaohms minimum
Insulation Resistance	1000 V AC rms at Sea Level
Operating Temperature	-25°C To +85°C

### Ordering Code:

