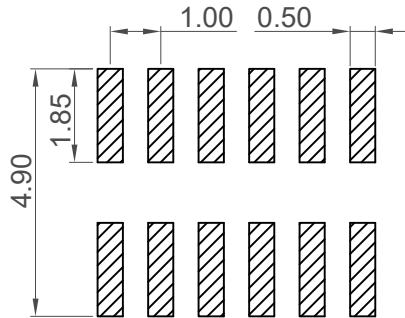
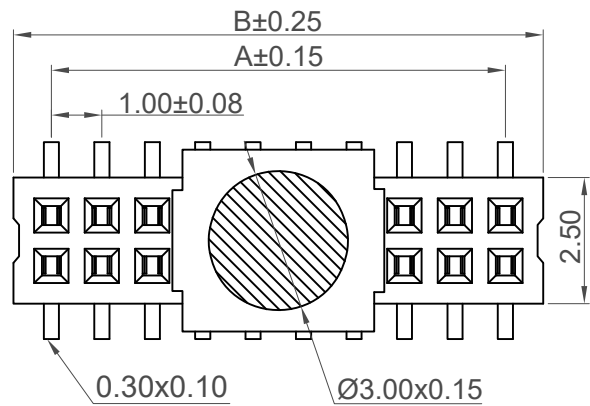
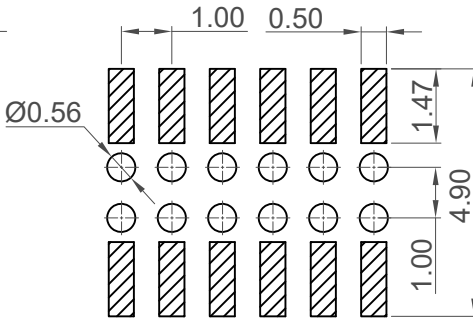


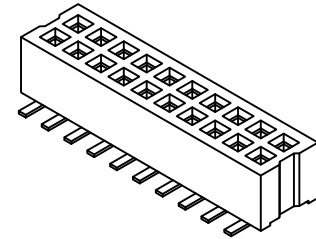
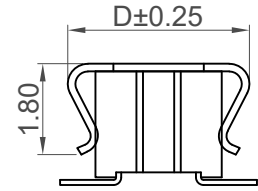
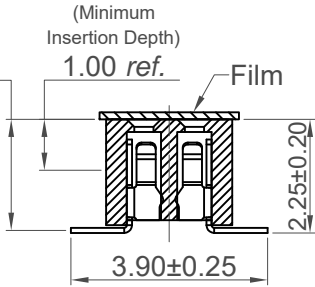
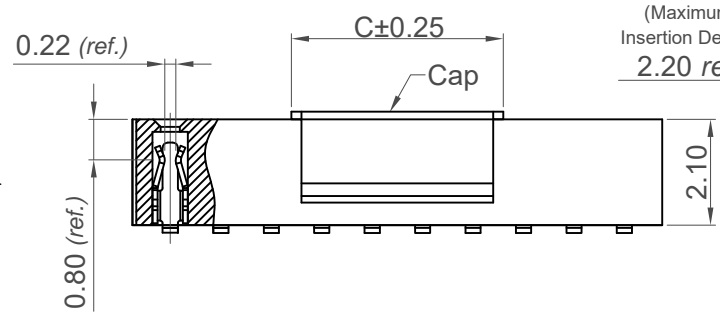
H  
G  
F  
E  
D  
C  
B  
A



**Recommended PCB Layout**  
For Top Entry  
General Tolerance: ±0.05  
Solder Area



**Recommended PCB Layout**  
For Bottom Entry  
General Tolerance: ±0.05  
Solder Area



No. of Contacts	Dimensions			
	A	B	C	D
4	1.00	2.50	3.00	3.85
6	2.00	3.50		
8	3.00	4.50	4.20	3.40
10	4.00	5.50		
12	5.00	6.50		
14	6.00	7.50		
16	7.00	8.50		
18	8.00	9.50		
20	9.00	10.50		
22	10.00	11.50		
24	11.00	12.50		
26	12.00	13.50		
28	13.00	14.50		
30	14.00	15.50		
32	15.00	16.50		
34	16.00	17.50		
36	17.00	18.50		
38	18.00	19.50		
40	19.00	20.50		
42	20.00	21.50		
44	21.00	22.50		
46	22.00	23.50		
48	23.00	24.50		
50	24.00	25.50		
52	25.00	26.50		
54	26.00	27.50		
56	27.00	28.50		
58	28.00	29.50		
60	29.00	30.50		
62	30.00	31.50		
64	31.00	32.50		
66	32.00	33.50		
68	33.00	34.50		
70	34.00	35.50		
72	35.00	36.50		
74	36.00	37.50		
76	37.00	38.50		
78	38.00	39.50		
80	39.00	40.50		

**Specifications**

**Material**  
Insulator: LCP, UL94V-0, Black  
Contact: Phosphor Bronze

**Plating**  
See ordering grid

**Electrical**  
Current Rating: 1A per contact  
Contact Resistance: 40 mΩ max.  
Insulating Resistance: 500 MΩ min.  
Dielectric Withstand Voltage: 200V AC

**Mechanical & Environmental**  
Operating Temperature: -40°C to +105°C  
Soldering Process:  
IR Reflow: 260°C for 10 sec.  
Manual Solder: 350°C for 3-5 sec

Mates with (subject to pin length):  
BC035 BC036 BC040 BC045  
BC050 BC055 BC057

**Ordering Grid**  
BC085-XX-X-0390-L-X

No. of Contacts: 04 to 80  
Contact Plating: A = Gold Flash All Over (Standard), C = Tin All Over  
Footprint Width (1/100mm): 0390 = 3.90mm

**Packing Options**  
C = Tape and Reel with Film (Standard)  
B = Tape and Reel with Cap  
D = Tube  
E = Tube with Cap  
F = Tube with Film (Unavailable for 4 contacts)

**Insulator Material**  
L = LCP (Standard)

Request Samples and Quotation

Part Number BC085		Product Description 1.00mm Pitch Socket, Dual Entry Dual Row, Surface Mount, Vertical	
Drawing Date 20th May 2008			
By	CC	Tolerances (Except as Noted)	Units: Metric (mm)
Detail	BC085 F PCN	Length: X. ± 0.30 Angle: XX ± 0.25	Angle: X° ± 5° X.X° ± 2°
Revision	F4	XXX ± 0.15	XXX° ± 1°
Date	06/09/21	X.XXX ± 0.10	X.XXX° ± 0.5°



This drawing is confidential and copyright of Global Connector Technology, Ltd (GCT). This drawing must not be copied or disclosed without written consent. E & OE



Not to Scale	Drawn By AJO	Sheet No. 1/1
--------------	-----------------	------------------