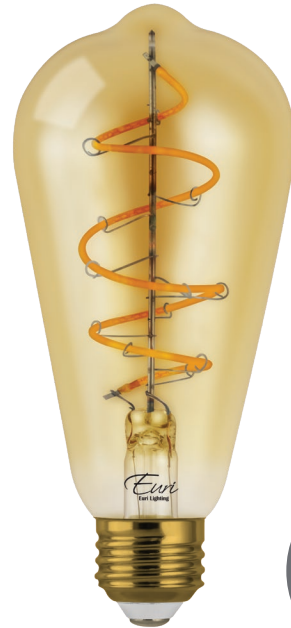
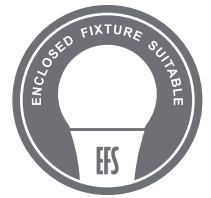


# LED VST19-3020ad

Lamp Class: ST19 Amber Glass



Amber Glass



## Product Description

**LED VST19-3020ad** delivers superior brightness, valuable energy savings and long lasting performance. LED Filaments along with heat-sink absence unmistakably mimic traditional bulb styles while providing greater light distribution. This ST19 Class LED bulb comes in 2200K CCT (*Warm White*) for charming and hospitable environments.



**Estimated Energy Cost: \$0.54 per year**

\*Note: Design, features and specifications subject to change without notice. Some features may not be available on all models. Please visit [www.eurilighting.com](http://www.eurilighting.com) or call 1-888-743-5766 for more information.

## Specifications

Input Power	Input Voltage	Lumen Output	Beam Angle	Center Beam	CCT
4.5 W	120 V	250 lm	320°	N/A	2200 K

CRI	Luminous Efficacy	Power Factor	Input Current	Base/Cap	Lamp Lifespan
80	55 lm/W	0.7	0.05 A	E26	15,000 Hrs.

## Product Features & Benefits



Dimmable



Energy Efficient

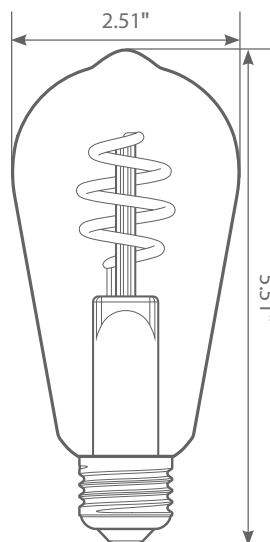


Enclosed Fixture Suitable

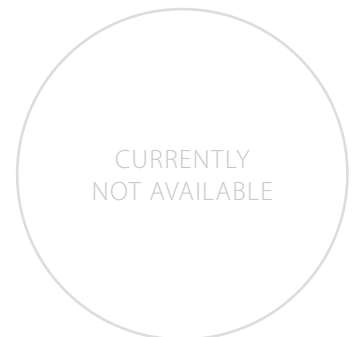


Wet Rated

## Product Dimensions



## Product Photometric Data



**Euri Lighting | A Division of IRTRONIX Inc.**