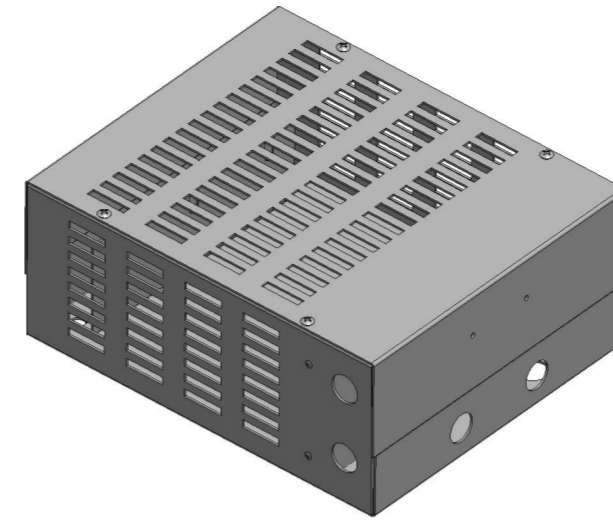
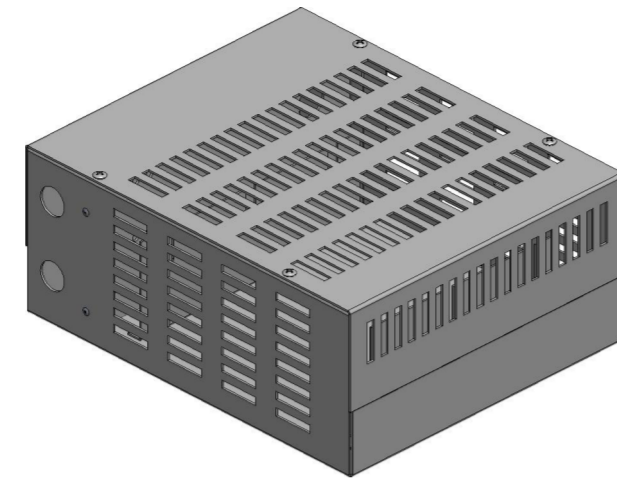
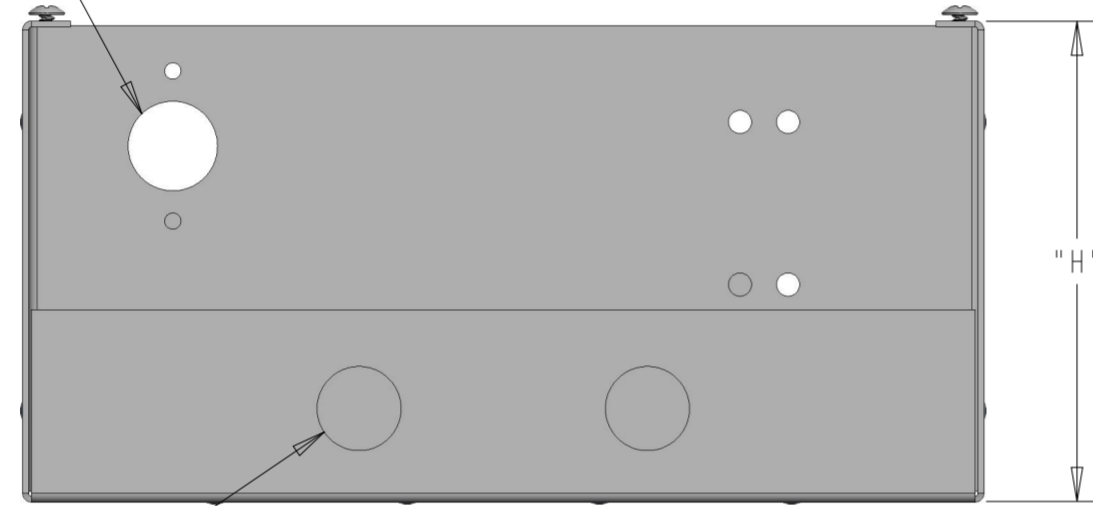


P	LTR	DESCRIPTION	DATE	DWN	APVD
	A	INITIAL RELEASE	07OCT2021	KS	AP



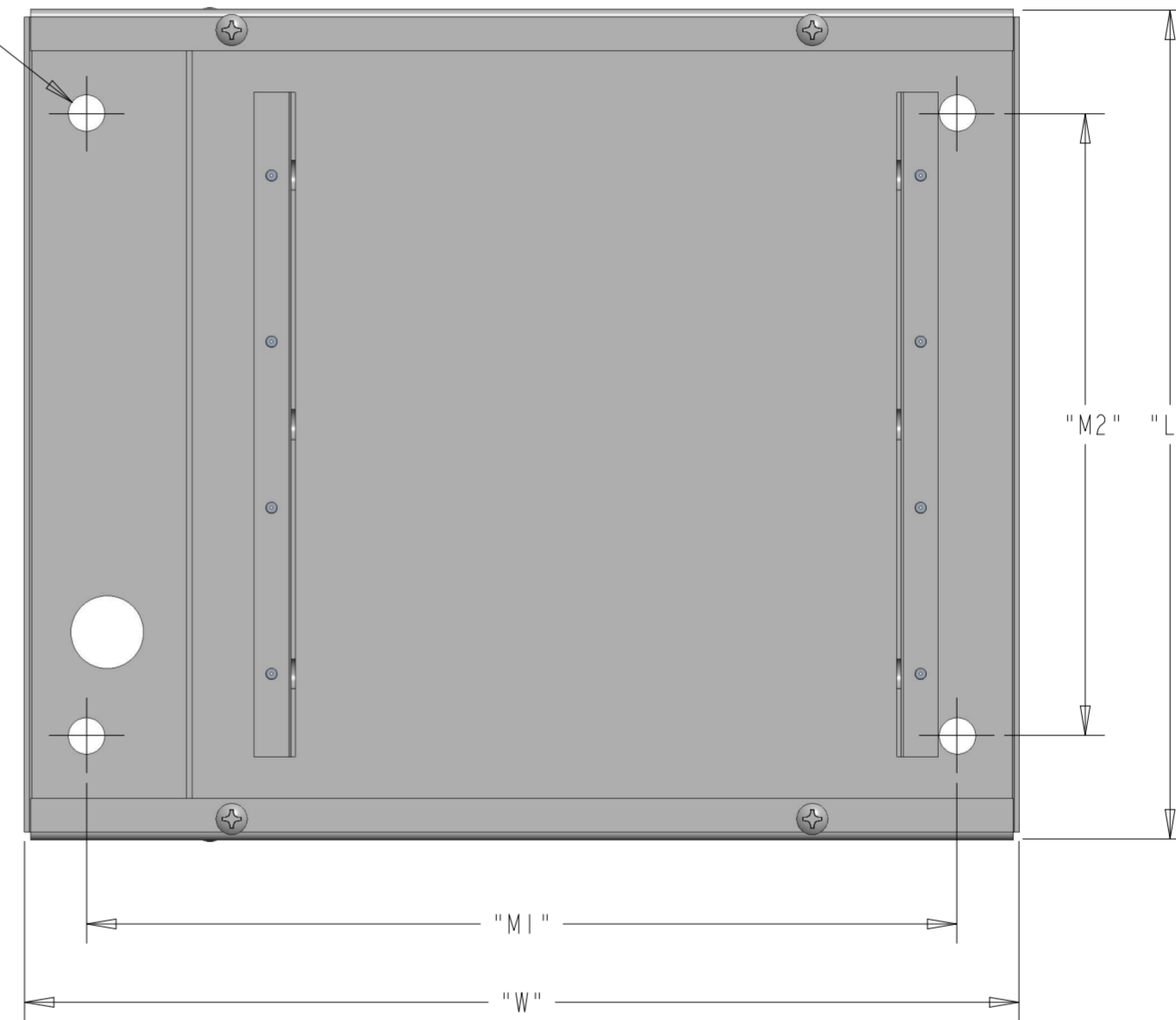
SCALE 1:5

TEMPERATURE SENSOR (OPTIONAL)



(x7) Ø22.225 (KNOCKOUTS)
[ONE LOCATED ON BOTTOM
2 ON LEFT AND RIGHT SIDE]

(x4) Ø11.125
(MOUNTING HOLES)



PART NUMBER	W (mm)	L (mm)	H (mm)	M1 (mm)	M2 (mm)	TOTAL RESISTANCE	H.P.	DUTY CYCLE	DRIVE VOLTAGE	BRAKING TORQUE
HPBA010E1K2100E	305	254	127	267	191	1200 Ohms ± 10%	1.00	100%	575 V	100%

NOTE:
1. FOR FURTHER TECHNICAL INFORMATION PLEASE SEE THE DATASHEET FOR THE HPBA SERIES

THIS DRAWING IS A CONTROLLED DOCUMENT.		DWN S. KARTHIK 24-09-2021	TE Connectivity	
DIMENSIONS: mm		CHK ALLAN PILE 24-09-2021		
TOLERANCES UNLESS OTHERWISE SPECIFIED:		APVD ALLAN PILE 24-09-2021	NAME BRAKING RESISTOR ASSEMBLY TYPE HPBA SERIES HPBA010E1K2100E	
0 PLC ± 1 PLC ± 2 PLC ±0.50 3 PLC ±0.500 4 PLC ± ANGLES ± FINISH -		PRODUCT SPEC -	SIZE A2	
MATERIAL -		APPLICATION SPEC -	CAGE CODE 00779	DRAWING NO 4-2176470-8
		WEIGHT -	RESTRICTED TO -	
		CUSTOMER DRAWING	SCALE 1:2	SHEET 1 OF 2
			REV A	

4

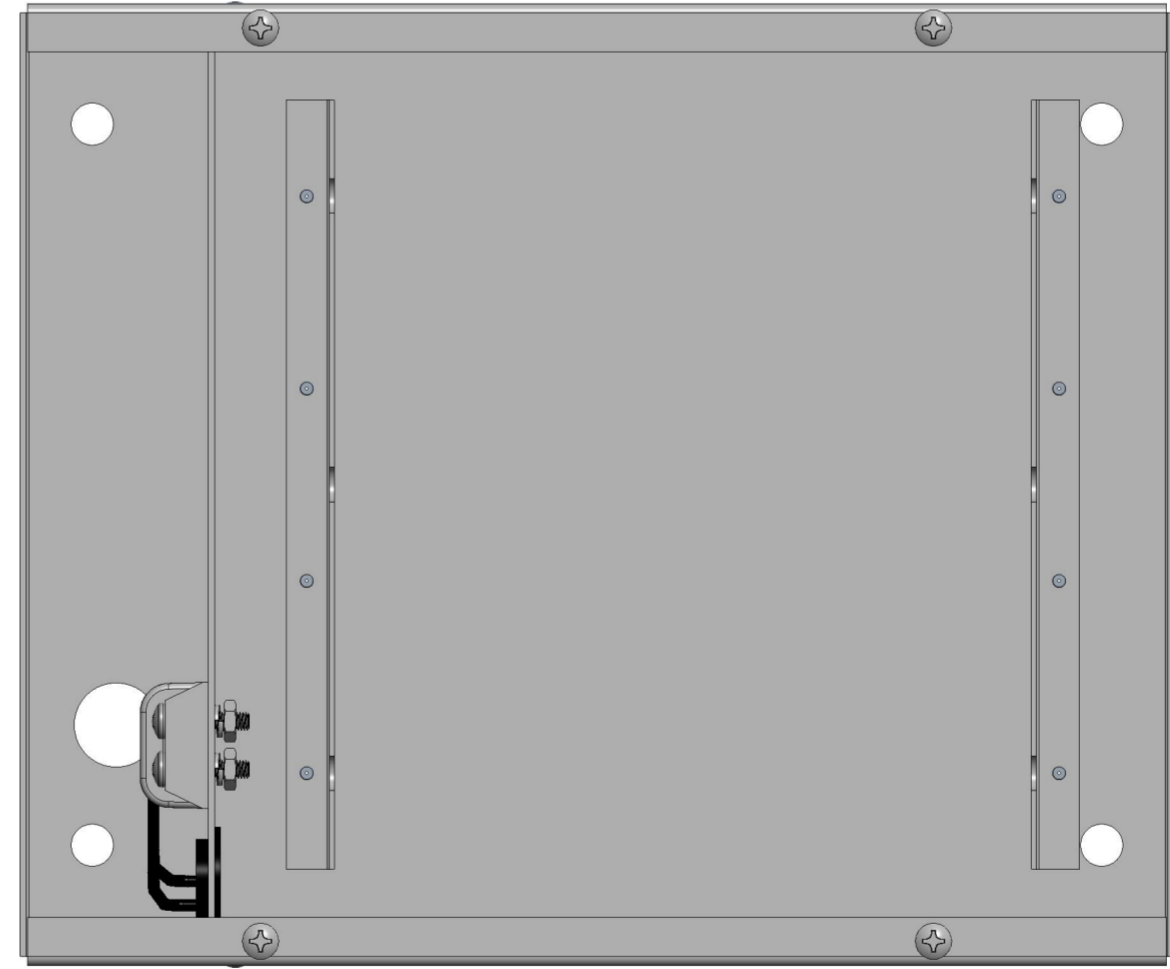
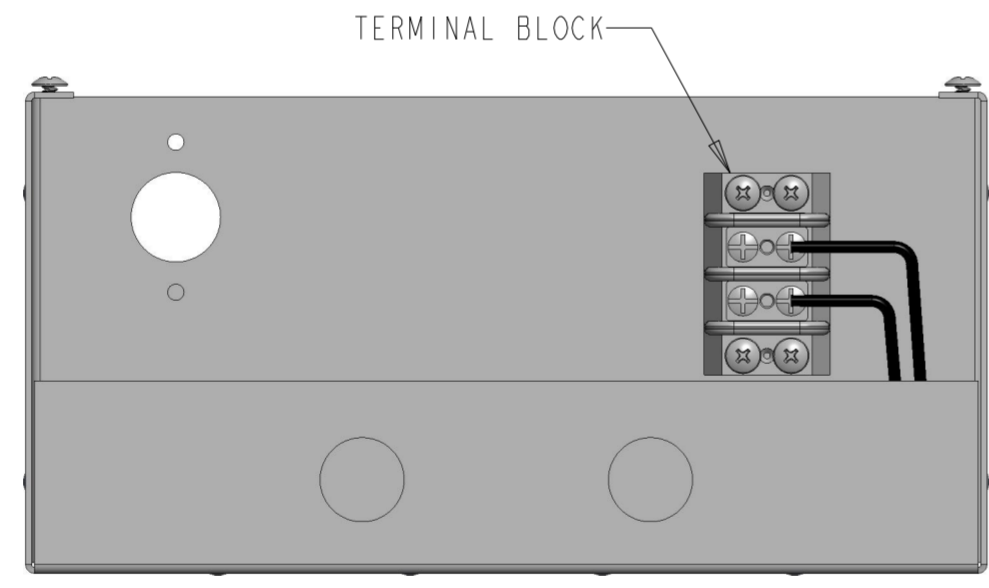
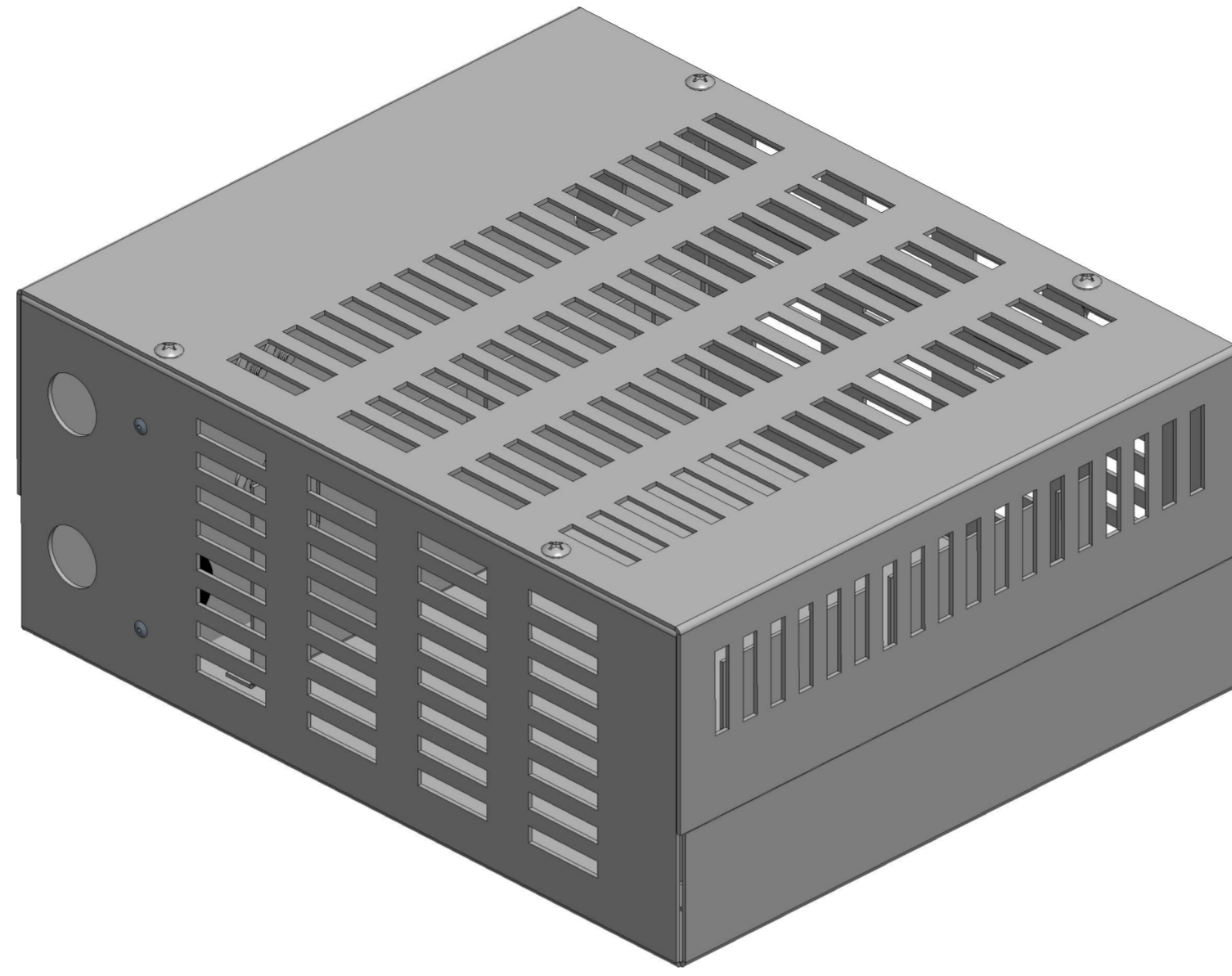
3

2

1

© 2021 TE Connectivity. All Rights Reserved.

REVISIONS				
P	LTR	DESCRIPTION	DATE	APVD
		SEE SHEET 1		



THIS DRAWING IS A CONTROLLED DOCUMENT.		DWN S. KARTHIK 24-09-2021	TE Connectivity																						
DIMENSIONS: mm		CHK ALLAN PILE 24-09-2021																							
TOLERANCES UNLESS OTHERWISE SPECIFIED:		APVD ALLAN PILE 24-09-2021	NAME BRAKING RESISTOR ASSEMBLY TYPE HPBA SERIES HPBA010E1K2100E																						
<table border="0"> <tr> <td>0 PLC</td> <td>±</td> <td></td> </tr> <tr> <td>1 PLC</td> <td>±</td> <td></td> </tr> <tr> <td>2 PLC</td> <td>±0.50</td> <td></td> </tr> <tr> <td>3 PLC</td> <td>±0.500</td> <td></td> </tr> <tr> <td>4 PLC</td> <td>±</td> <td></td> </tr> <tr> <td>ANGLES</td> <td>±</td> <td></td> </tr> <tr> <td>FINISH</td> <td></td> <td></td> </tr> </table>		0 PLC	±		1 PLC	±		2 PLC	±0.50		3 PLC	±0.500		4 PLC	±		ANGLES	±		FINISH			PRODUCT SPEC -	SIZE A2	
0 PLC	±																								
1 PLC	±																								
2 PLC	±0.50																								
3 PLC	±0.500																								
4 PLC	±																								
ANGLES	±																								
FINISH																									
MATERIAL -		APPLICATION SPEC -	CAGE CODE 00779	DRAWING NO C-4-2176470-8	RESTRICTED TO -																				
		WEIGHT -	SCALE 1:2		SHEET 2 OF 2																				
		CUSTOMER DRAWING	REV A																						