

6

5

4

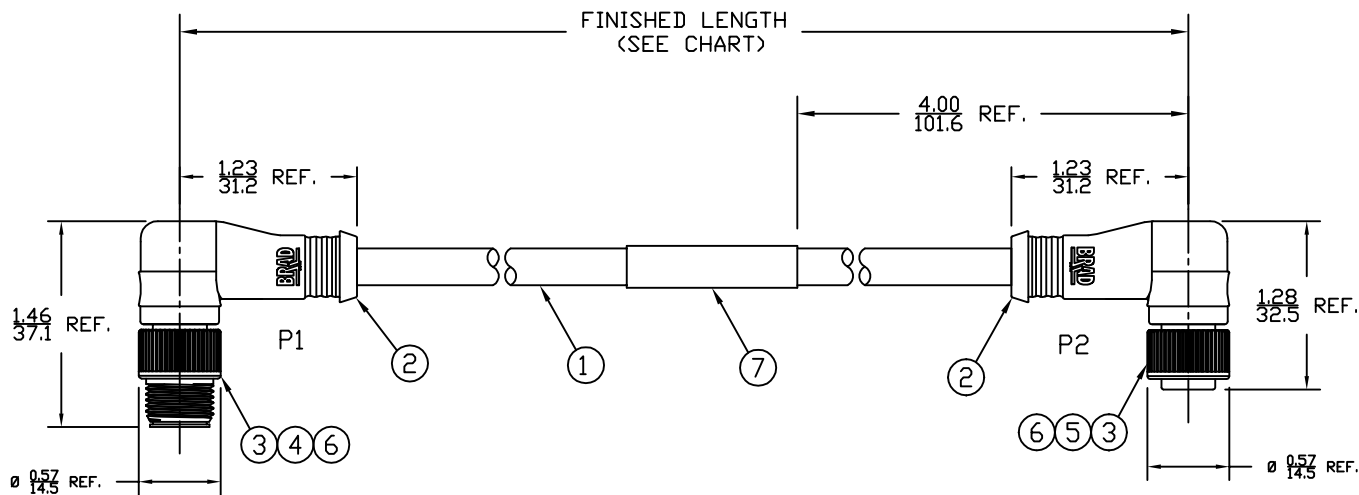
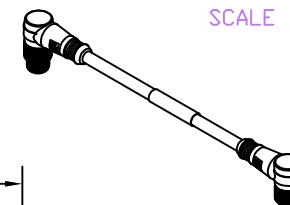
3

2

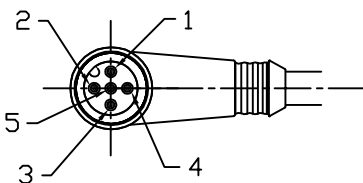
1

PART NUMBER	ENGINEERING NO.	LENGTH ± TOLERANCE
1300280104	DND33A-M010	3' 3" +2.19"/-0" [1M +55.6/-0 mm]
1300280110	DND33A-M030	9' 10" +3.50"/-0" [3M +88.9/-0 mm]
1300280113	DND33A-M050	16' 5" +6.50"/-0" [5M +165.1/-0 mm]

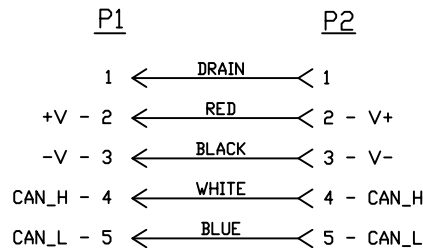
AUX VIEW
SCALE 1:4



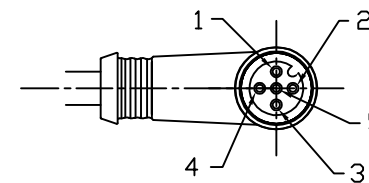
- NOTES:
- 1) MATERIAL: SEE TABLE
 - 2) FINISHES: SEE TABLE
 - 3) CABLE: #22/4 + DRAIN, DEVICENET THIN EACH PAIR: SHIELDED, TWISTED OVERALL: SHIELDED, PVC
 - 4) ELECTRICAL DATA:
MAX. VOLTAGE: 250V AC/DC
MAX. CURRENT 4A
 - 5) ENVIRONMENTAL:
PROTECTION IP67
TEMPERATURE RANGE: -20°C TO 80°C
 - 6) WRAP LABEL IS MARKED WITH P/N, DATE CODE, VOLTAGE & AMPERAGE.
 - 7) ASSEMBLY IS RoHS COMPLIANT.



MALE- FACE VIEW



SCHEMATIC



FEMALE- FACE VIEW

ITEM	QTY.	DESCRIPTION	MATERIAL	FINISH
7	1	LABEL	PLASTIC FILM	BLACK/YELLOW
6	2	INSERT	NYLON	BLACK
5	5	SOCKET CONTACT	COPPER ALLOY	GOLD PLATED
4	5	PIN CONTACT	COPPER ALLOY	GOLD PLATED
3	2	M12 COUPLING NUT	ZINC DIE-CAST	BLACK
2	2	OVERMOLD	PVC	GRAY
1	1	DEVICENET CABLE	PVC JACKET	GRAY

SD RELEASE EC NO.: WEL2010-0054 8/14/09 DRWN: BWOODMAN CHKD: --- APPR: JFMURPHY 2009/08/21	QUALITY SYMBOLS	GENERAL TOLERANCES (UNLESS SPECIFIED)	DIMENSION STYLE	SCALE	DESIGN UNITS	THIRD ANGLE PROJECTION
	▽=0 ∇=0	mm INCH	IN/MM	3:4	INCH	

4 PLACES	±----	±----
3 PLACES	±----	±.005
2 PLACES	±----	±.010
1 PLACE	±----	±.020
ANGULAR ±1/2°		
DRAFT WHERE APPLICABLE MUST REMAIN WITHIN DIMENSIONS		

DRAWN BY	DATE
VOU	2009/07/30
CHECKED BY	DATE
BWOODMAN	2009/07/31
APPROVED BY	DATE
---	---
MATERIAL NO.	SEE CHART
SIZE	A

TITLE		M12 DEVICENET CABLE ASSY 5P MALE/FEM 90/90 #22/4 SHLD PVC -THIN STD	
MATERIAL NO.		MOLEX INCORPORATED	
DOCUMENT NO.		SD-130028-003	
SHEET NO.		1 OF 1	
THIS DRAWING CONTAINS INFORMATION THAT IS PROPRIETARY TO MOLEX INCORPORATED AND SHOULD NOT BE USED WITHOUT WRITTEN PERMISSION			

6

5

4

3

2

1

E

E

D

D

C

C

B

B

A

A